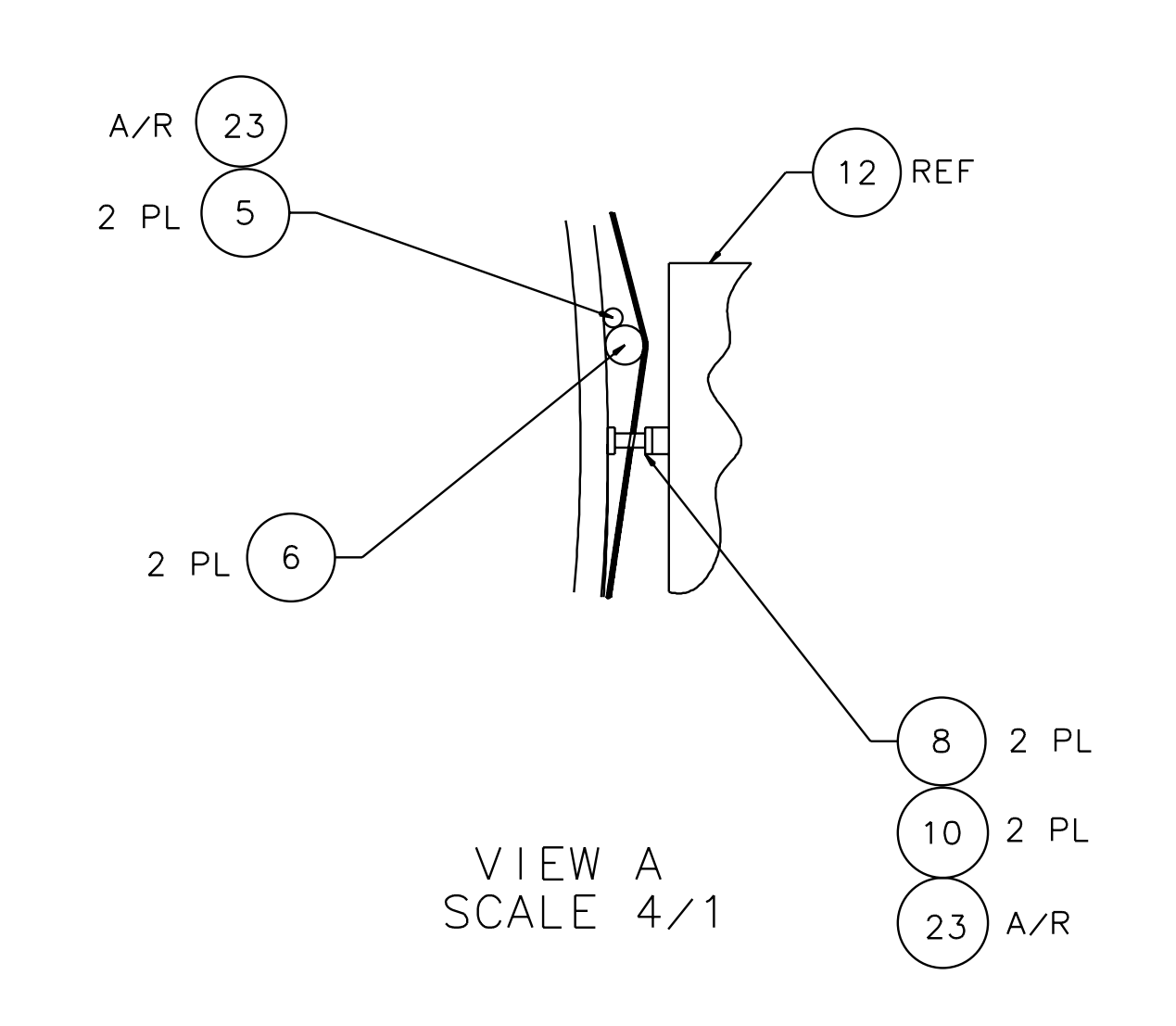
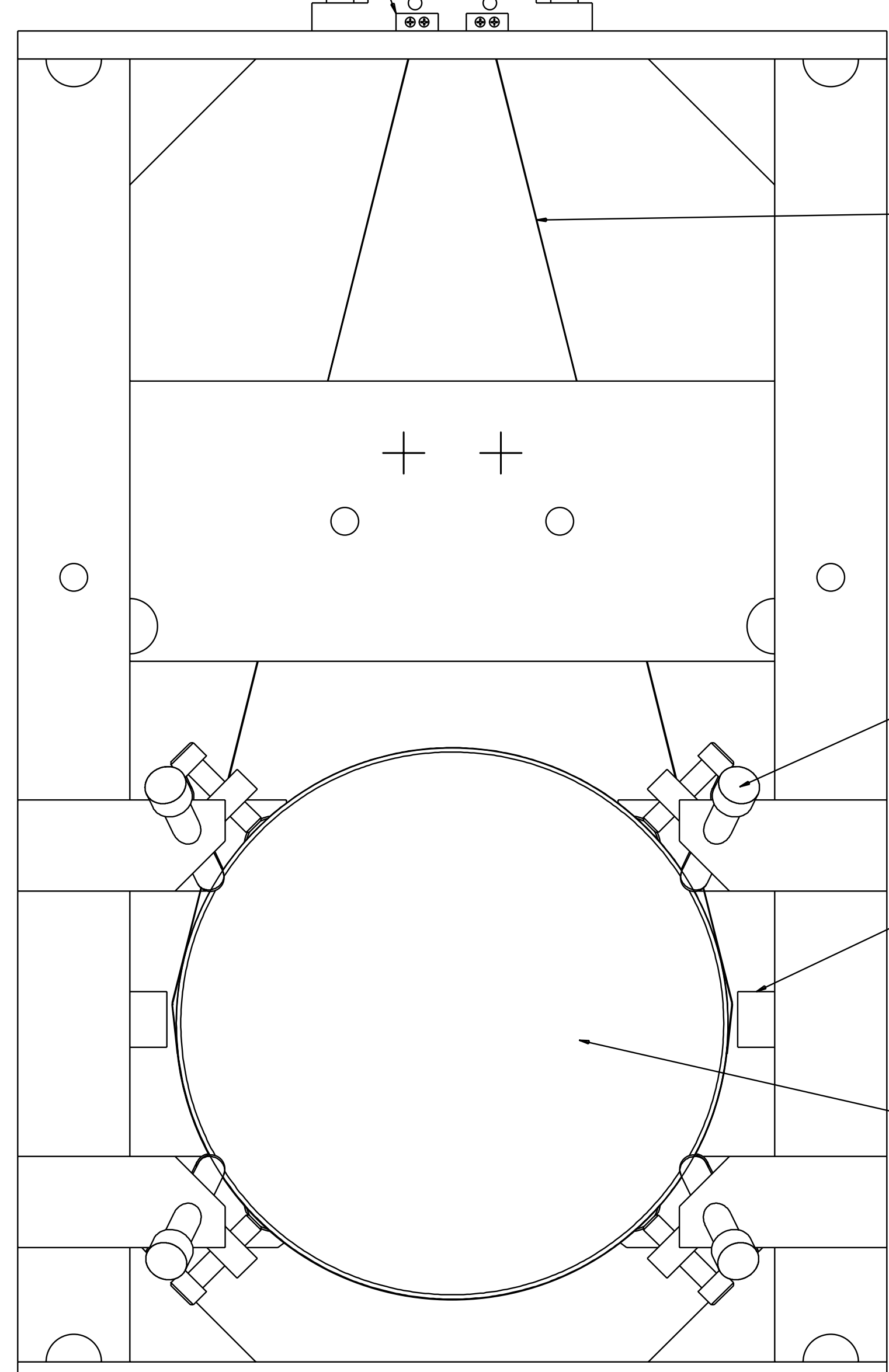
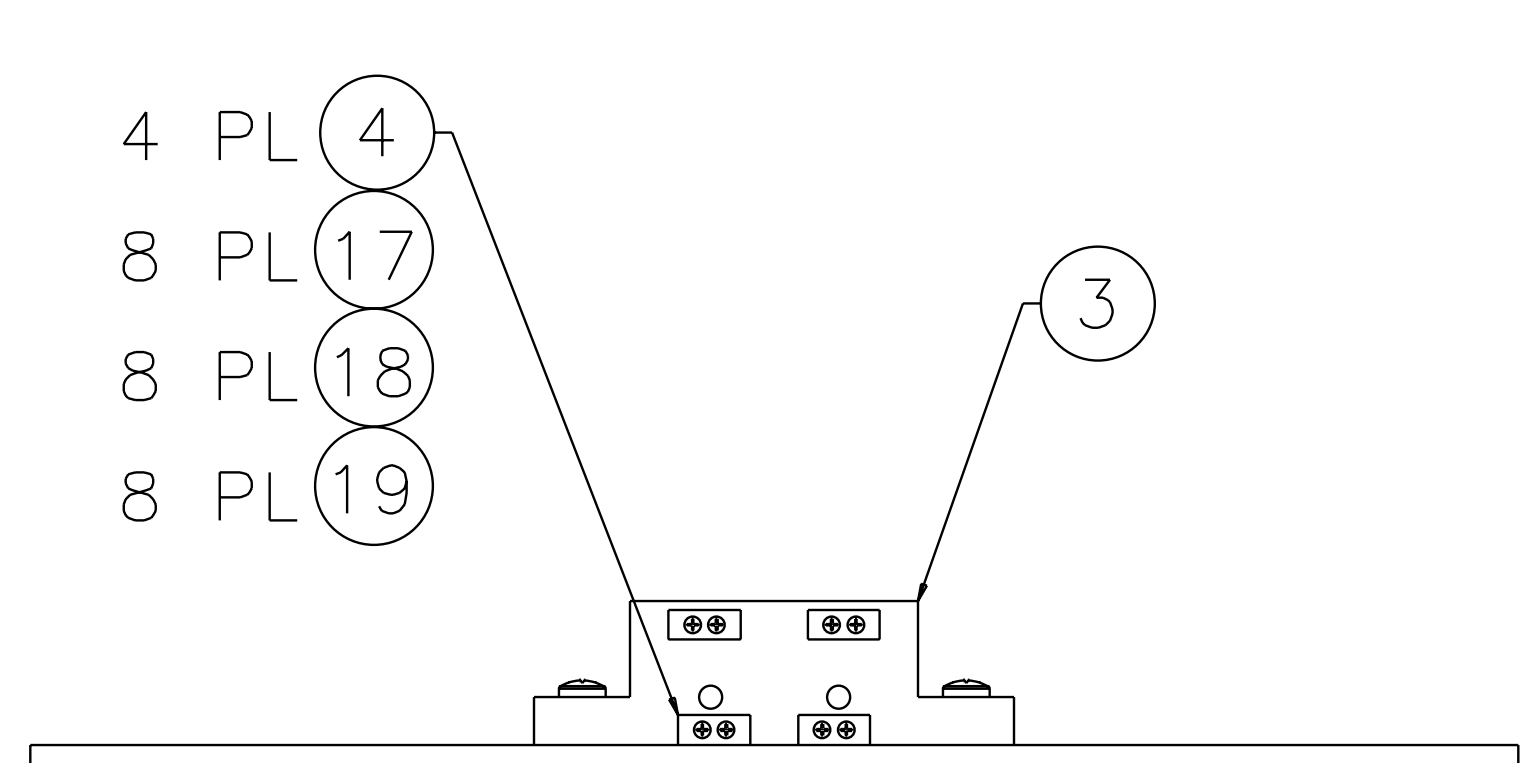
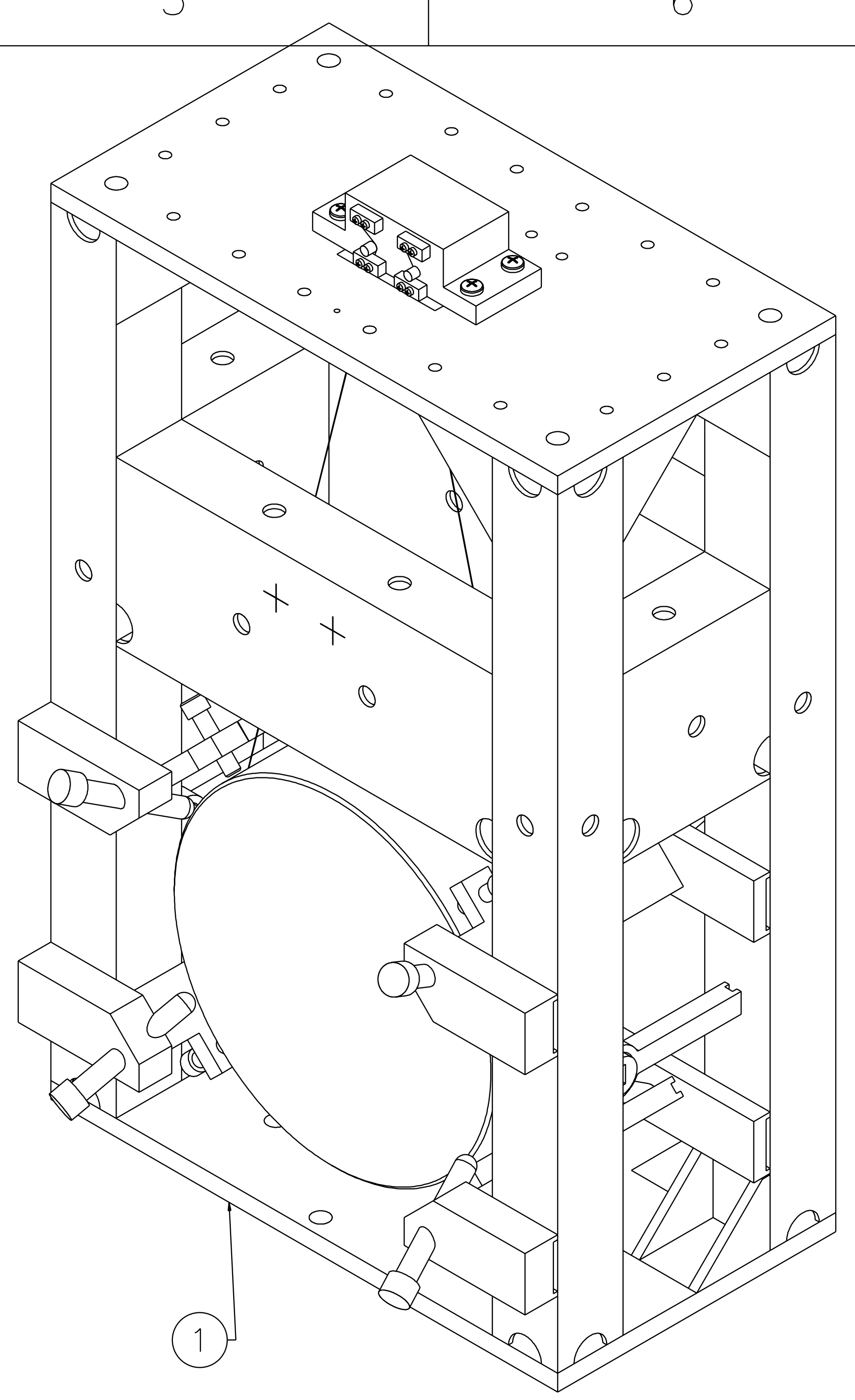
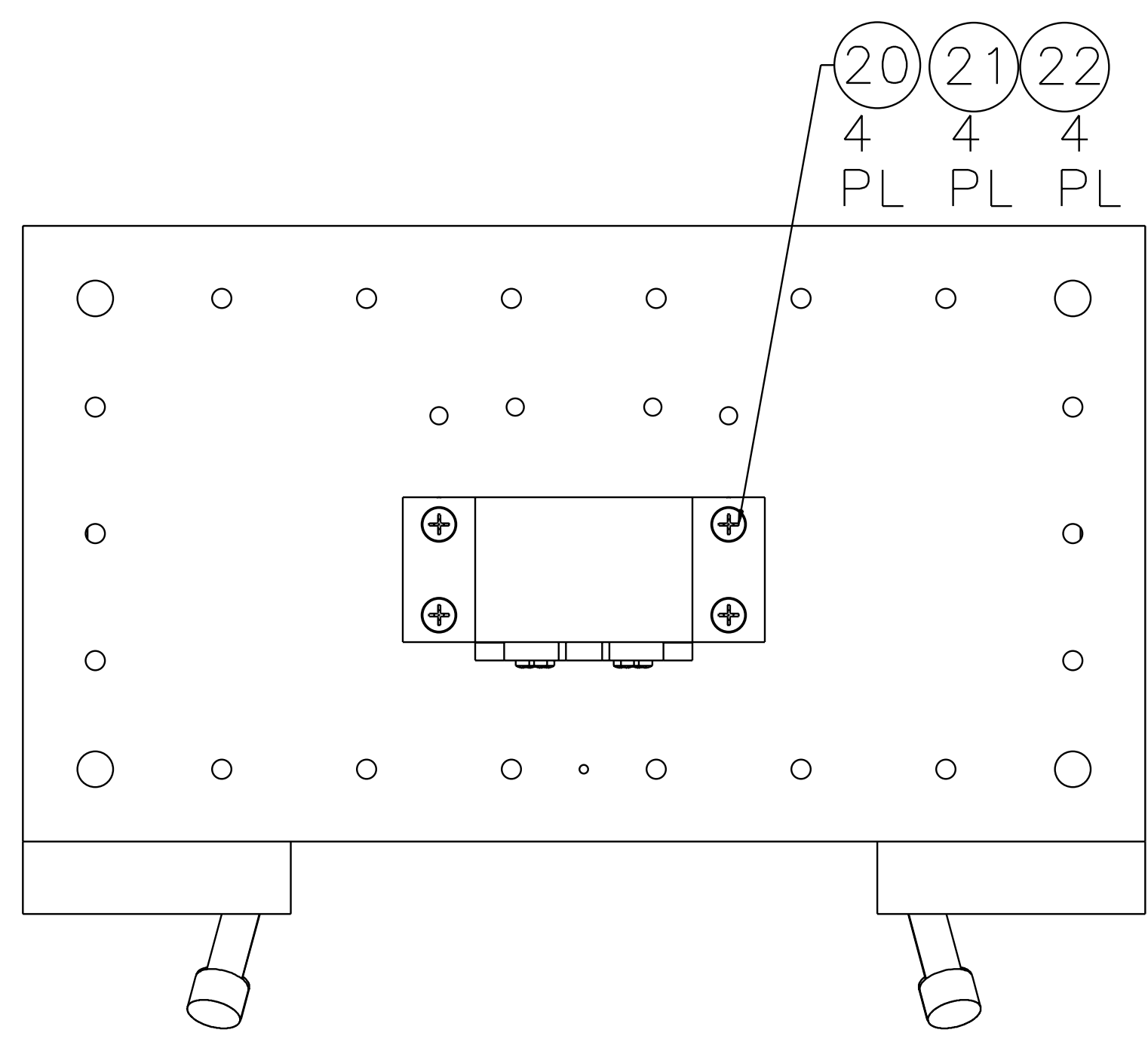


NOTES: (UNLESS OTHERWISE SPECIFIED)
 1. SPECIFICATIONS FOR THE CONSTRUCTION OF THIS ASSEMBLY ARE COVERED IN THE LARGE OPTIC SUSPENSION BALANCING SPECIFICATION, LIGO E970154.
 HEIGHT ADAPTER IS NOT SHOWN FOR CLARITY. IT IS BOLTED TO THE TOP OF THE LOS STRUCTURE ASSEMBLY USING THE HARDWARE ITEM NOS. 25-28. INSTRUCTIONS INCLUDED IN LIGO E970154.

REV	DATE	DRAWN BY	CHECKED	DCC	DCN/DESCRIPTION
A	4/27/01	J. Romie			E010077/INITIAL RELEASE



QTY	RECD	PART OR IDENTIFYING NO.	NOMENCLATURE OR DESCRIPTION	MATERIAL SPECIFICATION	ITEM NO.	
					41	
					40	
					39	
					38	
		D990186	SIDE BLOCKS, ETM,MMT3,FM		37	
		D960753	FIXTURE, WIRE AND OPTICS		36	
		D970180	WINCH FIXTURE		35	
		D960147	FIXTURE, GUIDE ROD		34	
		D990159	FIXTURE, MAG./STAND.GLUING,BS		33	
		D970169	MAGNET STRENGTH FIXTURE		32	
		D970616	COIL STRENGTH FIXTURE		31	
		D970615	PAM SCREW		30	
ALT		D990691	LOS3 CHAMFER STOP	ALT TO 9	29	
		18	1/4-20 x 1.5 LG SHCS	STAINLESS	28	
		18	1/4-20 LOCK WASHER	STAINLESS	27	
		18	1/4-20 FLAT WASHER	STAINLESS	26	
		18	U-C COMPONENTS P/N N-2520-A	1/4-20 HEX NUT	STAINLESS,Ag PLTD	25
		1	D970569	HEIGHT ADAPTER, FM	(2)	24
A/R			EPOXY, VAC-SEAL		23	
		4	COMMERCIAL EQUIV NAS620416L	WASHER, FLAT, #1/4	STAINLESS	22
		4	COMMERCIAL EQUIV MS35338-139	WASHER, SPLIT LOCK, #1/4	STAINLESS	21
		4	U-C COMPONENTS P/N C-2016-NA	SCREW, SHCS, 1/4-20 x 1.00	STAINLESS,Ag PLTD	20
		8	COMMERCIAL EQUIV NAS620C4L	WASHER, FLAT, #4	STAINLESS	19
		8	COMMERCIAL EQUIV MS35338-135	WASHER, SPLIT LOCK, #4	STAINLESS	18
		8	U-C COMPONENTS P/N C-408-NA	SCREW, SHCS, 4-40 x .50	STAINLESS,Ag PLTD	17
					16	
		8	D990690	LOS SAFETY STOP		15
		6	U-C COMPONENTS P/N T-1003-NA	SET SCREW, SOCKET,10-32 x .188	STAINLESS,Ag PLTD	14
A/R			WIRE, ϕ .0120*+/--.0003*	MUSIC WIRE		13
		5	D960138	SENSOR/ACTUATOR HEAD ASSEMBLY		12
		4	D970075	DUMBELL STANDOFF		11
		10	D960501	MAGNET		10
		8	D960499	LOS CHAMFER STOP		9
		2	D960149	LOS SIDE STANDOFF		8
					7	
		2	D960755	LOS LARGE WIRE STANDOFF		6
		1	D960146	LOS GUIDE ROD		5
		4	D960134	LOS CLAMP, SUSPENSION BLOCK		4
		1	D960144	LOS SUSPENSION BLOCK		3
		1	COATING SPEC E980065	OPTIC, ϕ 25cm x 10cm THICK	[FOLDING MIRROR]	2
		1	D970508	LOS3 STRUCTURE ASSEMBLY		1

APPROVALS	DATE	TITLE
J. Hozei	5/96	LIGO CALIFORNIA INSTITUTE OF TECHNOLOGY MASSACHUSETTS INSTITUTE OF TECHNOLOGY
DO NOT SCALE DRAWING		LARGE OPTIC SUSPENSION ASSEMBLY (LOS3) FOR FOLDING MIRROR (FM)
NEXT ASSEMBLY	MATERIAL	SIZE
FINAL	N/A	E
FILE LOCATION	FINISH	SCALE
home/dcc/docs/0970507.pdf	N/A	1/2