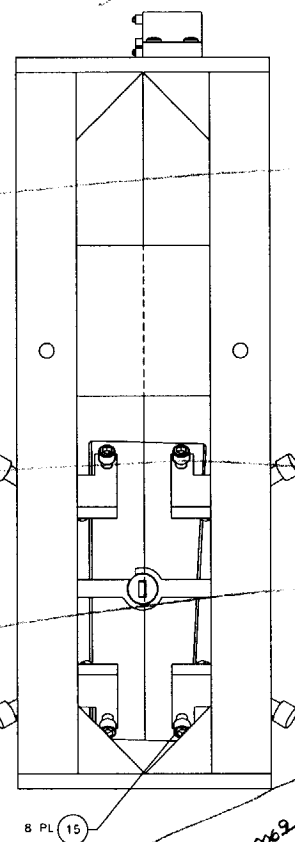
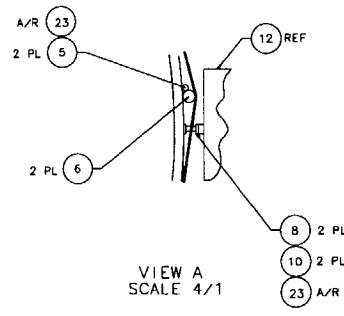
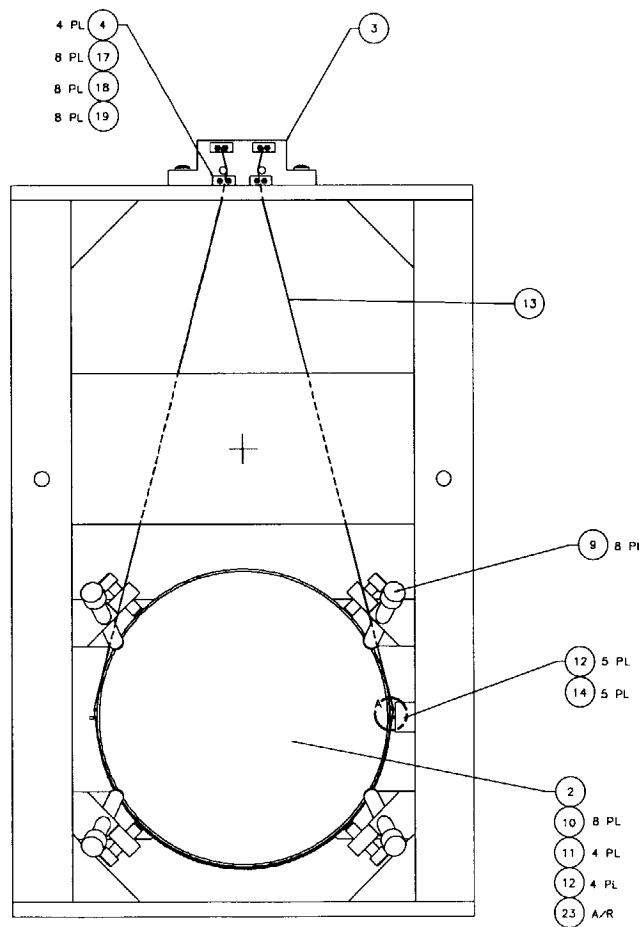
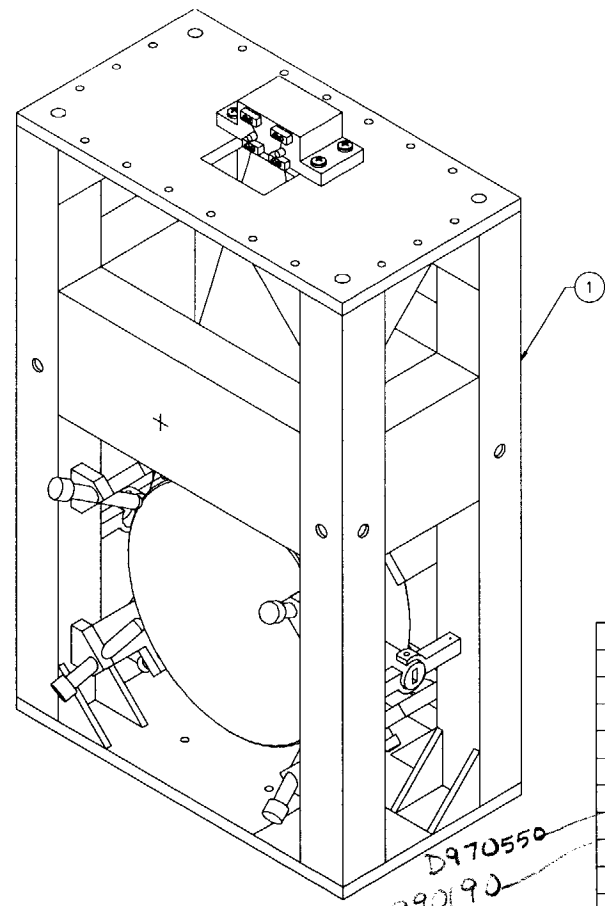
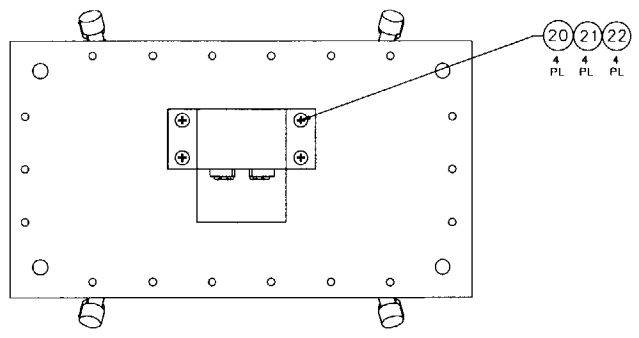


NOTES: (UNLESS OTHERWISE SPECIFIED)  
 1. SPECIFICATIONS FOR THE CONSTRUCTION OF THIS ASSEMBLY ARE COVERED IN THE LARGE OPTIC SUSPENSION BALANCING SPECIFICATION, LIGO E970154.  
 2. MATERIAL: CONDUCTIVE TEFLON, MANUF. BY PURON DIXON, 386 METACOM AVE., BRISTOL, RI, 02809, (401) 253-2000, AND DESIGNATED BY THE NAME PURON DIXON COMPOUND 1042.  
 3. HEIGHT ADAPTER IS NOT SHOWN FOR CLARITY. IT IS BOLTED TO THE TOP OF THE LOS STRUCTURE ASSEMBLY USING THE HARDWARE ITEM NOS. 25-28. INSTRUCTIONS INCLUDED IN LIGO E970154.

REV	DATE	DRWN BY	CHECKED	DCC	DESCRIPTION
A	1/19/98	Hozel	L. Turner		E98004/INITIAL RELEASE
B	1/28/98	CC1103			E98007/UPDATE PARTS LIST



ITEM	DESCRIPTION	QTY	UNIT	REMARKS
D970180	WINCH FIXTURE			41
D960761	FIXTURE, LIFTING			40
D970074	FIXTURE, MAGNET TO DUMPELL STANDOFF			39
D960763	FIXTURE, TEST MASS			38
D960752	FIXTURE, OPTICAL LEVELER			37
D960753	FIXTURE, WIRE AND OPTICS			36
D960147	FIXTURE, GUIDE ROD			35
D960050	FIXTURE, MAGNET/STANDOFF			34
D970169	MAGNET STRENGTH FIXTURE			33
D970616	COIL STRENGTH FIXTURE			32
				31
D970615	PAM SCREW			30
				29
24 28	1/4-20 x 1.5 LG SHCS		STAINLESS, Ag PLTD	28
24 18	1/4-20 LOCK WASHER		STAINLESS, Ag PLTD	27
24 18	1/4-20 FLAT WASHER		STAINLESS, Ag PLTD	26
24 12	1/4-20 HEX NUT		STAINLESS, Ag PLTD	25
1	HEIGHT ADAPTER, BS 4K	2		24
A/R	EPOXY, VAC-SEAL			23
4	COMMERCIAL EQUIV NAS620-18L WASHER, FLAT, #1/4		STAINLESS	22
4	COMMERCIAL EQUIV MS35338-139 WASHER, SPLIT LOCK, #1/4		STAINLESS	21
4	U-C COMPONENTS P/N C-2016-NA SCREW, SHCS, 1/4-20 x 1.00		STAINLESS, Ag PLTD	20
8	COMMERCIAL EQUIV NAS620-4L WASHER, FLAT, #1/4		STAINLESS	19
8	COMMERCIAL EQUIV MS35338-139 WASHER, SPLIT LOCK, #1/4		STAINLESS	18
8	U-C COMPONENTS P/N C-442-NA SCREW, SHCS, 4-40 x .50		STAINLESS, Ag PLTD	17
3	D970563 BEAMSPLITTER SAFETY STOP			16
8	SCREW, HEX HEAD, 3/8-16 x 1.50			15
6	U-C COMPONENTS P/N T-1003-NA SET SCREW, SOCKET, 10-32 x .188		STAINLESS, Ag PLTD	14
A/R	WIRE, #012077-0003			13
5	D960138 SENSOR/ACTUATOR HEAD ASSEMBLY			12
4	D970075 DUMPELL STANDOFF			11
10	D960501 MAGNET BEAMSPLITTER			10
8	D960499 LOS CHAMFER STOP			9
2	D960149 LOS SIDE STANDOFF			8
				7
2	D960755 LOS LARGE WIRE STANDOFF			6
1	D960146 LOS GUIDE ROD			5
4	D960134 LOS CLAMP, SUSPENSION BLOCK			4
1	D960144 LOS SUSPENSION BLOCK			3
1	COATING SPEC E980068 OPTIC, Ø25cm x 1cm THICK		(END TEST MASS)	2
1	D960133 LOS STRUCTURE ASSEMBLY			1

APPROVALS DATE LIGO CALIFORNIA INSTITUTE OF TECHNOLOGY MASSACHUSETTS INSTITUTE OF TECHNOLOGY

DO NOT SCALE DRAWING

FILE LOCATION FINAL N/A

FINISH N/A

SCALE 1/2

SHEET 1 OF 1

REDLINE 7

D970505 BEAMSPLITTER, 4K (BS, 4K)