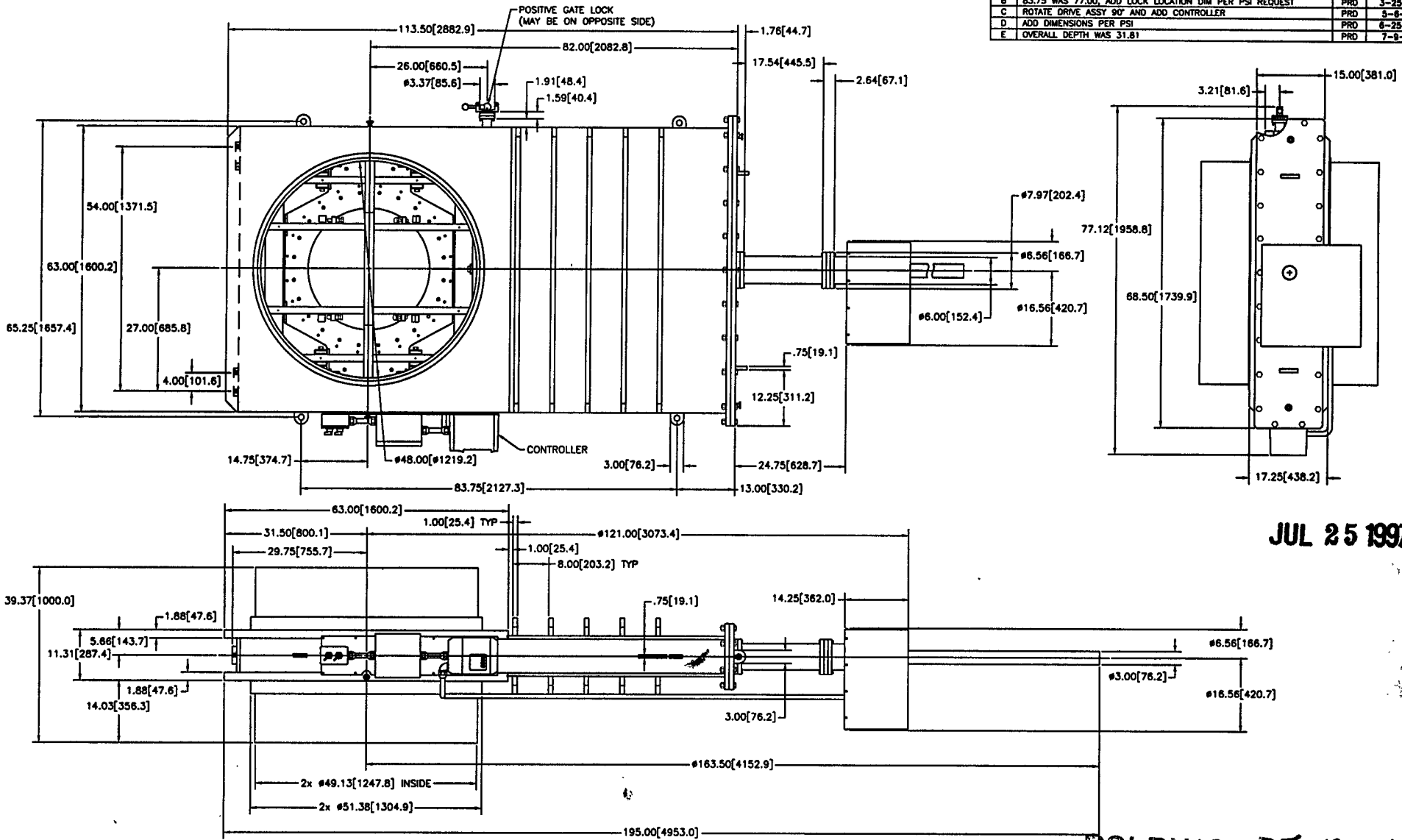


| REVISIONS |  |          |         |
|-----------|--|----------|---------|
| REV.      | DESCRIPTION  | APPROVED | DATE    |
| A         | RELEASED   | PRD      | 11-7-96 |
| B         | 83.75 WAS 77.00, ADD LOCK LOCATION DIM PER PSI REQUEST | PRD      | 3-25-97 |
| C         | ROTATE DRIVE ASSY 90° AND ADD CONTROLLER               | PRD      | 5-6-97  |
| D         | ADD DIMENSIONS PER PSI                                 | PRD      | 6-25-97 |
| E         | OVERALL DEPTH WAS 31.81                                | PRD      | 7-8-97  |



JUL 25 1997

PSI DWG # V049-8-69

NOTES:

- 1 SPECIFICATIONS IN ACCORDANCE WITH PSI SPEC. #V049-2-005 REV 3.
- 2 DIMENSIONS ARE IN INCHES[MILLIMETERS].

| ITEM  | QTY. | PART NO. | DESCRIPTION   |
|---|------|----------|---|
| PART LIST   |      |          | MATERIAL SPECIFICATION: 304 SST   |
| <small>                     GNB CORPORATION<br/>                     SCIENTIFIC AND INDUSTRIAL EQUIPMENT<br/>                     20271 San Joaquin St.<br/>                     HAYWARD, CALIFORNIA 94544<br/>                     (510) 441-1200 FAX: (510) 441-0828                 </small>   |      |          | TITLE<br><b>OUTLINE, GATE VALVE<br/>                     G48ESB - WELD/WELD</b> |
| <small>                     CONTRACT OR SALES ORDER NO.<br/>                     DATE<br/>                     APPROVALS<br/>                     DATE<br/>                     PART NO.<br/>                     DATE<br/>                     CHECKED<br/>                     DATE<br/>                     DESIGNED<br/>                     DATE<br/>                     DRAWN<br/>                     DATE<br/>                     MATERIAL SPECIFICATION<br/>                     DATE                 </small> |      |          |   |
| USED ON<br>N/A  |      |          | PART NO.<br>103849-01   |
| OVERALL DEPTH WAS 31.81   |      |          | SHEET 1 OF 1  |