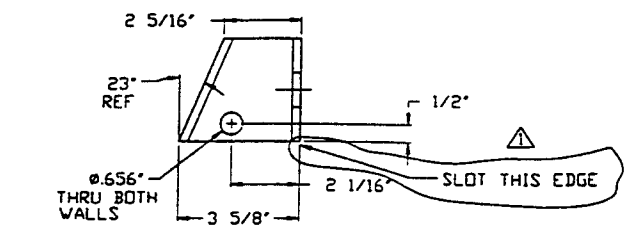
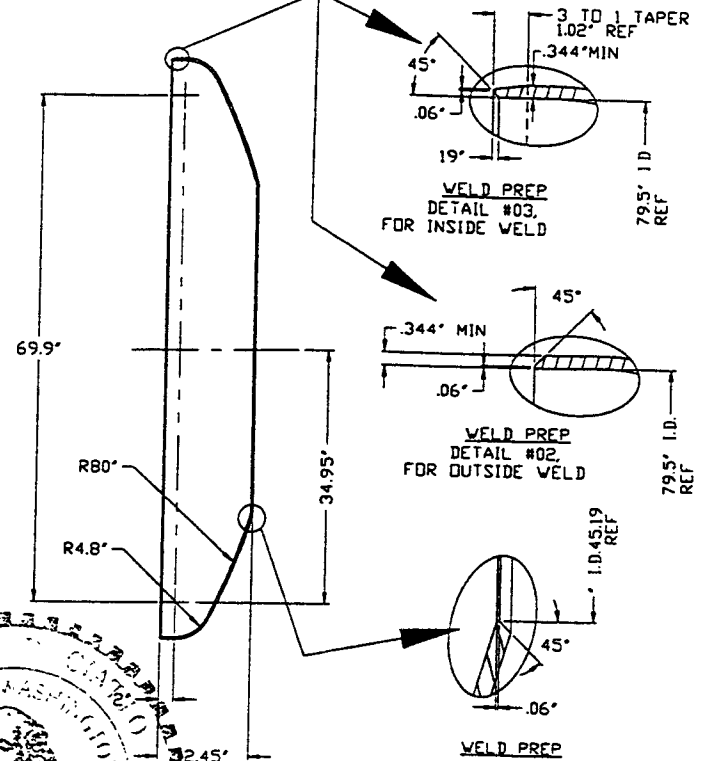
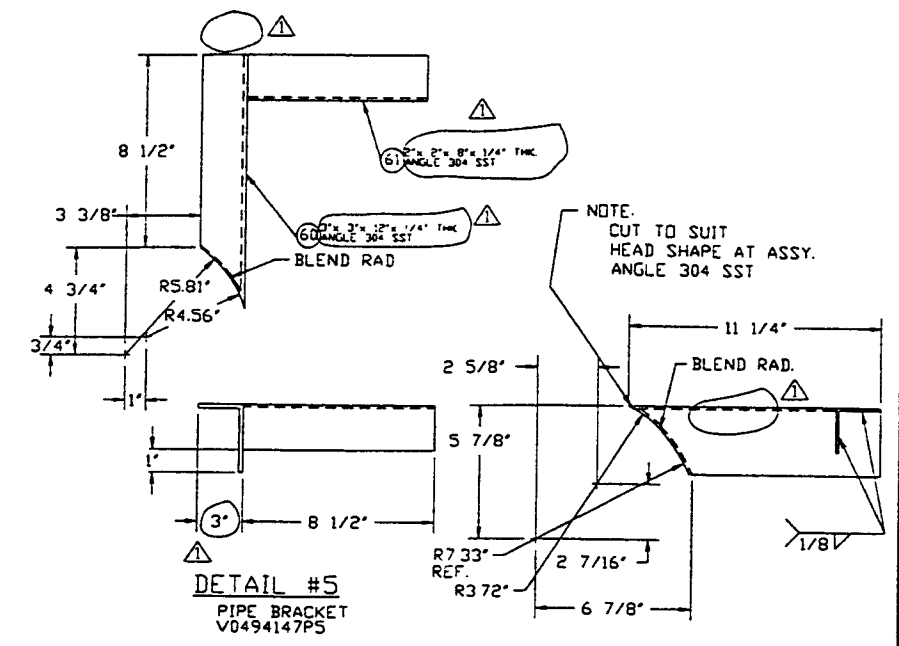


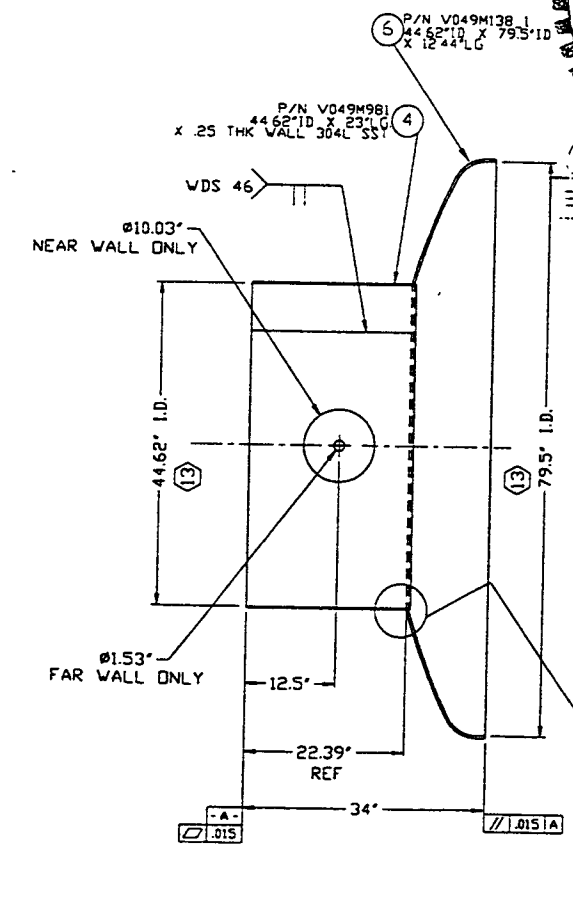
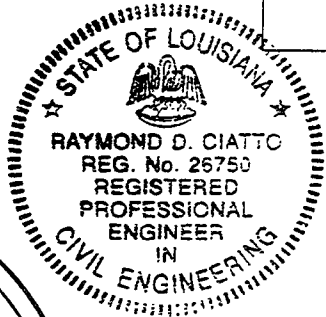
DETAIL #1
 P/N V049M260.1 (13) 44.62" I.D. X 79.5" I.D.
 X 12.44" LG. HEAD
 .375 THK 304 SSS



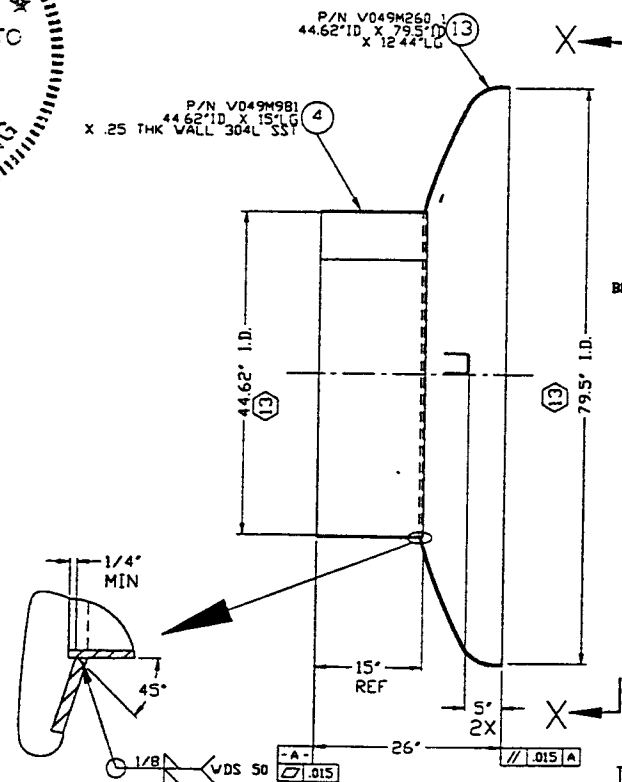
DETAIL #4
 V0494147P4 1 (8) HANGER TOE MOUNT
 2 REQUIRED (8) 3" X 10.5" X .25 THK
 304L SSS CMTRS REQUIRED



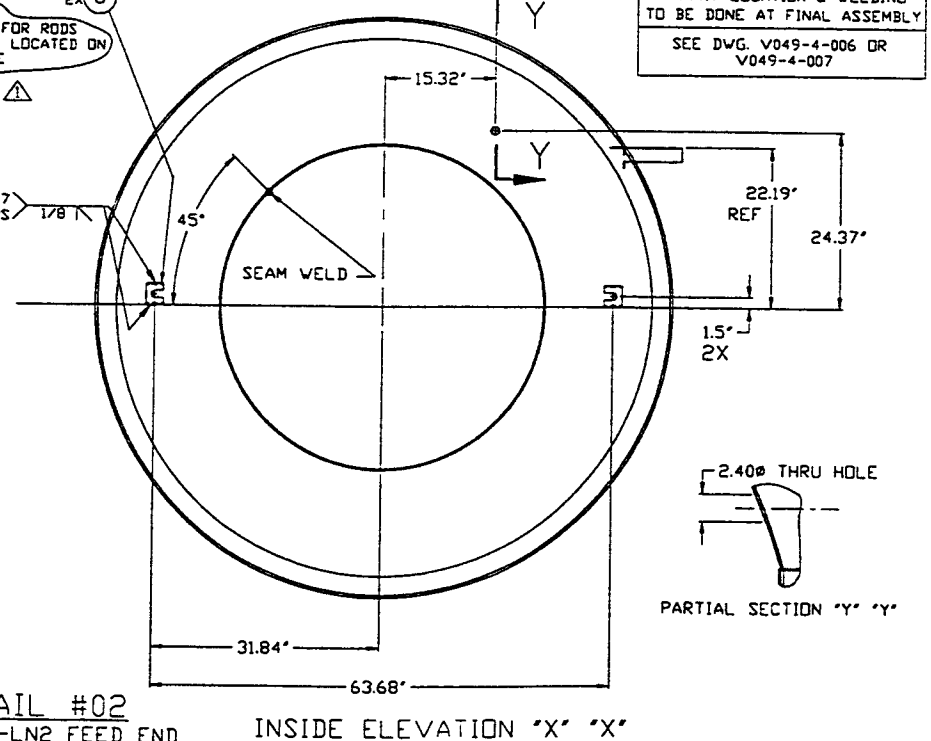
DETAIL #5
 PIPE BRACKET
 V0494147PS



DETAIL #03
 HEAD - PUMPOUT END
 V0494147P3



DETAIL #02
 HEAD-LN2 FEED END
 V0494147P2



PARTIAL SECTION 'Y' 'Y'

<p>PROPRIETARY AND CONFIDENTIAL</p> <p>THIS DOCUMENT CONTAINS PROPRIETARY INFORMATION BELONGING TO PROCESS SYSTEMS INTERNATIONAL, INC. OR ITS AFFILIATED COMPANIES AND SHALL BE USED ONLY FOR THE PURPOSES FOR WHICH IT WAS SUPPLIED. IT SHALL NOT BE COPIED, REPRODUCED OR OTHERWISE USED, NOR SHALL SUCH INFORMATION BE FURNISHED IN WHOLE OR IN PART TO OTHERS EXCEPT IN ACCORDANCE WITH THE TERMS OF ANY AGREEMENT UNDER WHICH IT WAS SUPPLIED OR WITH THE WRITTEN CONSENT OF PROCESS SYSTEMS INTERNATIONAL, INC. AND SHALL BE RETURNED UPON REQUEST.</p>				<p>UNLESS OTHERWISE SPECIFIED DIMENSIONS ARE IN INCHES</p> <p>TO DECIMALS: FRACTIONAL: 1/16 ANGULAR: 10°-30° BEND 1/2" TWO PLACE DECIMAL: 1/32 THREE PLACE DECIMAL: 1/64 FINISHED SURFACE: RIG BREAK CORNERS: 1/8" OUT REMOVE ALL BURRS</p>				<p>PROCESS SYSTEMS INTERNATIONAL, INC. 20 WALKUP DR. WESTBOROUGH, MASSACHUSETTS 01581 USA</p>			
<p>DO NOT SCALE THIS DRAWING</p>				<p>1 REISSUED FOR FABRICATION</p>				<p>REV GS RDC DWV REC TDV 1/31/96 0324</p>			
<p>USED ON: NEXT ASS'Y: V049-4-119/120</p>				<p>ISSUE DESCRIPTION</p>				<p>HEAD / NOZZLE DETAILS LONG - RIGHT - / SHORT - LEFT - LIGO VACUUM EQUIPMENT</p>			
<p>DWG. NO. DESCRIPTION REFERENCE DRAWINGS</p>				<p>SCALE: NONE SHEET: 1 OF 1</p>				<p>DATE: 1/14/97</p>			