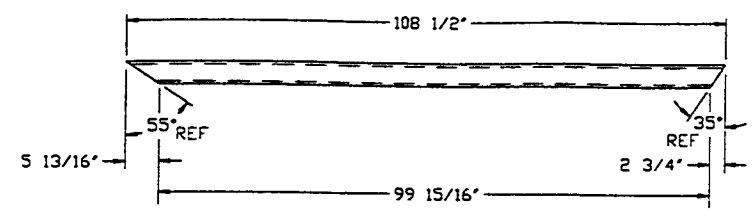
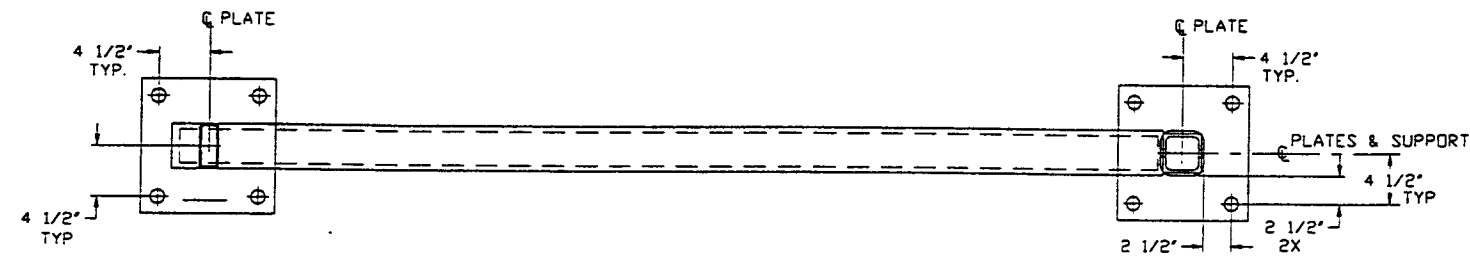
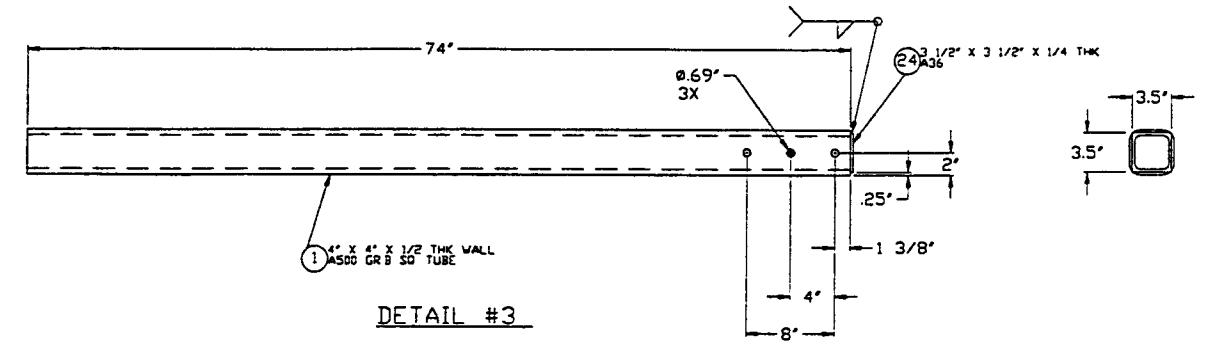


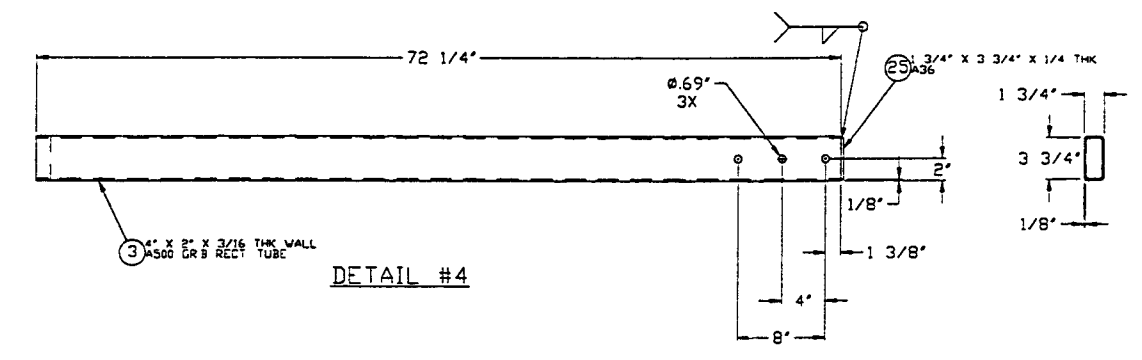
DETAIL #2
 ② 12" X 12" X 1 3/8" THK
 2X



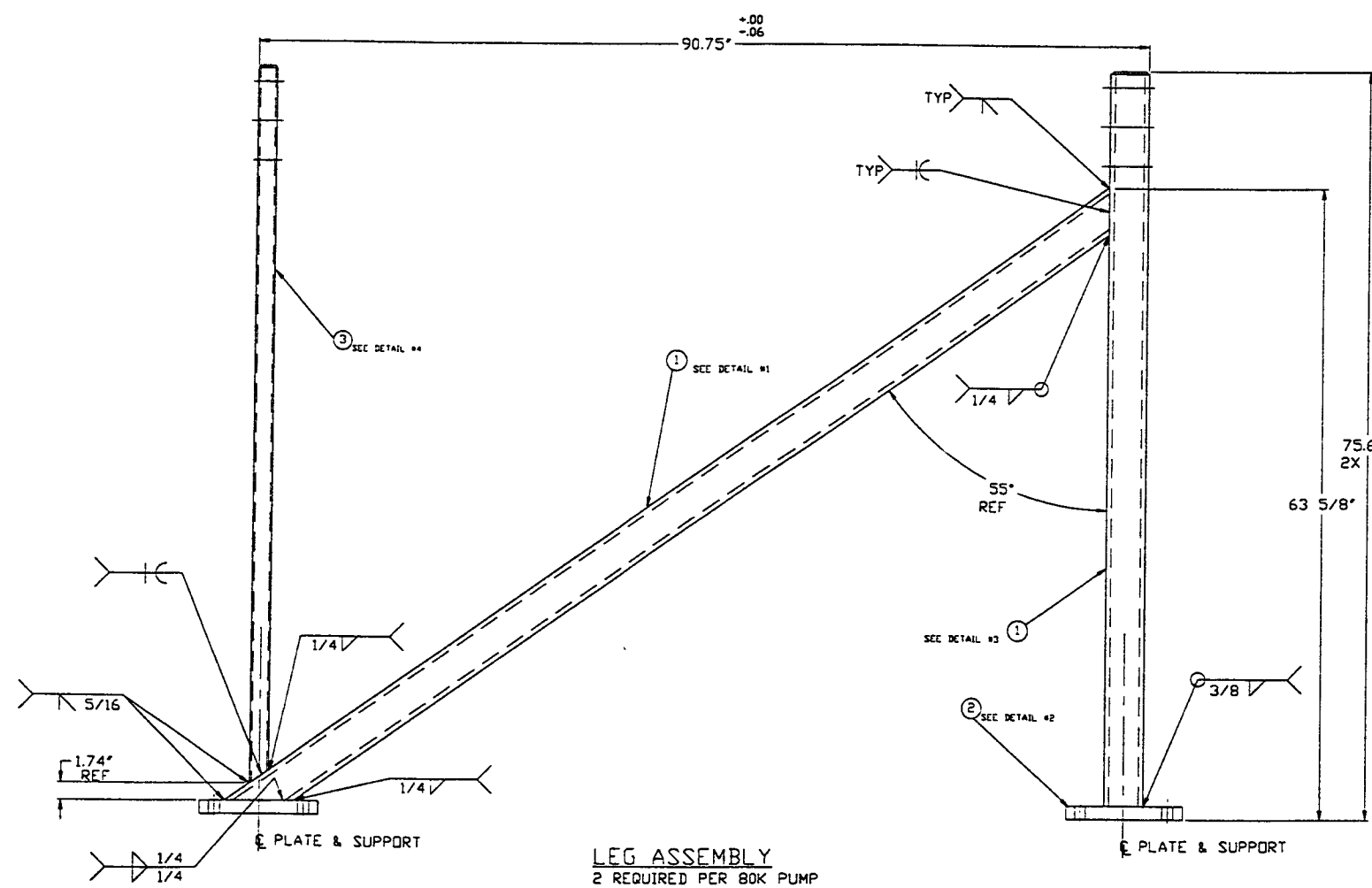
DETAIL #1
 ① 4" X 4" X 1/2" THK WALL
 AS500 GR B SQ TUBE 7 2X



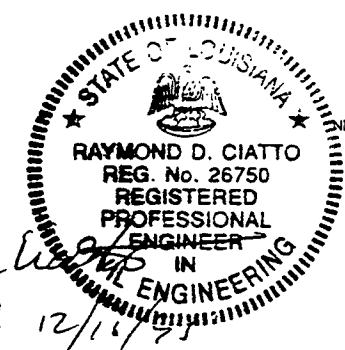
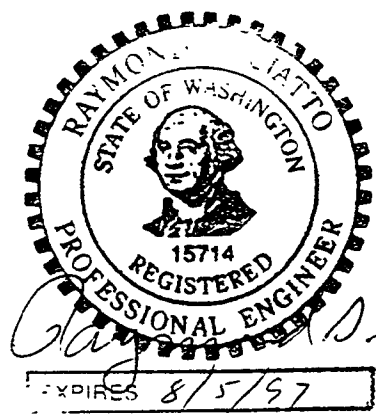
DETAIL #3
 ① 4" X 4" X 1/2" THK WALL
 AS500 GR B SQ TUBE



DETAIL #4
 ③ 4" X 2" X 3/16" THK WALL
 AS500 GR B RECT TUBE



LEG ASSEMBLY
 2 REQUIRED PER 80K PUMP



- NOTES:
 1) FABRICATION TO BE IN ACCORDANCE WITH SPEC. V049-2-139
 2) PIECE MARK EACH FINISHED LEG ASSEMBLY WITH "V0494140"

APPROX. ASSEMBLY WEIGHT = 485#

PROPRIETARY AND CONFIDENTIAL
 THIS DOCUMENT CONTAINS PROPRIETARY INFORMATION BELONGING TO PROCESS SYSTEMS INTERNATIONAL, INC. OR ITS AFFILIATED COMPANIES AND SHALL BE USED ONLY FOR THE PURPOSE FOR WHICH IT WAS SUPPLIED. IT SHALL NOT BE COPIED, REPRODUCED OR OTHERWISE USED, NOR SHALL SUCH INFORMATION BE FURNISHED IN WHOLE OR IN PART TO OTHERS EXCEPT IN ACCORDANCE WITH THE TERMS OF ANY AGREEMENT UNDER WHICH IT WAS SUPPLIED OR WITH THE PRIOR WRITTEN CONSENT OF PROCESS SYSTEMS INTERNATIONAL, INC. AND SHALL BE RETURNED UPON REQUEST.

DWG NO.	DESCRIPTION	DWG NO.	DESCRIPTION
	REFERENCE DRAWINGS		

UNLESS OTHERWISE SPECIFIED DIMENSIONS ARE IN INCHES
 TOLERANCES:
 FRACTIONAL ± .03
 ANGULAR ± .01
 TWO PLACE DECIMAL ± .01
 THREE PLACE DECIMAL ± .005
 FINISHED SURFACE RYS
 BREAK CORNERS IN
 REMOVE ALL BURRS

REV	DESCRIPTION	CHKD	DRWN	DATE	DEC
0	ISSUED FOR FABRICATION			11/14/96	0325

PROCESS SYSTEMS INTERNATIONAL, INC. 20 WALKUP DR WESTBOROUGH, MASSACHUSETTS 01581 USA			
80K PUMP LEG ASS'Y - LONG- LIGO VACUUM EQUIPMENT			
CAD FILE V0494140	SIZE D	DWG NO V049-4-140	REV 0
SCALE NONE	SHEET 1 OF 1		

LIGO-D970437-00-V