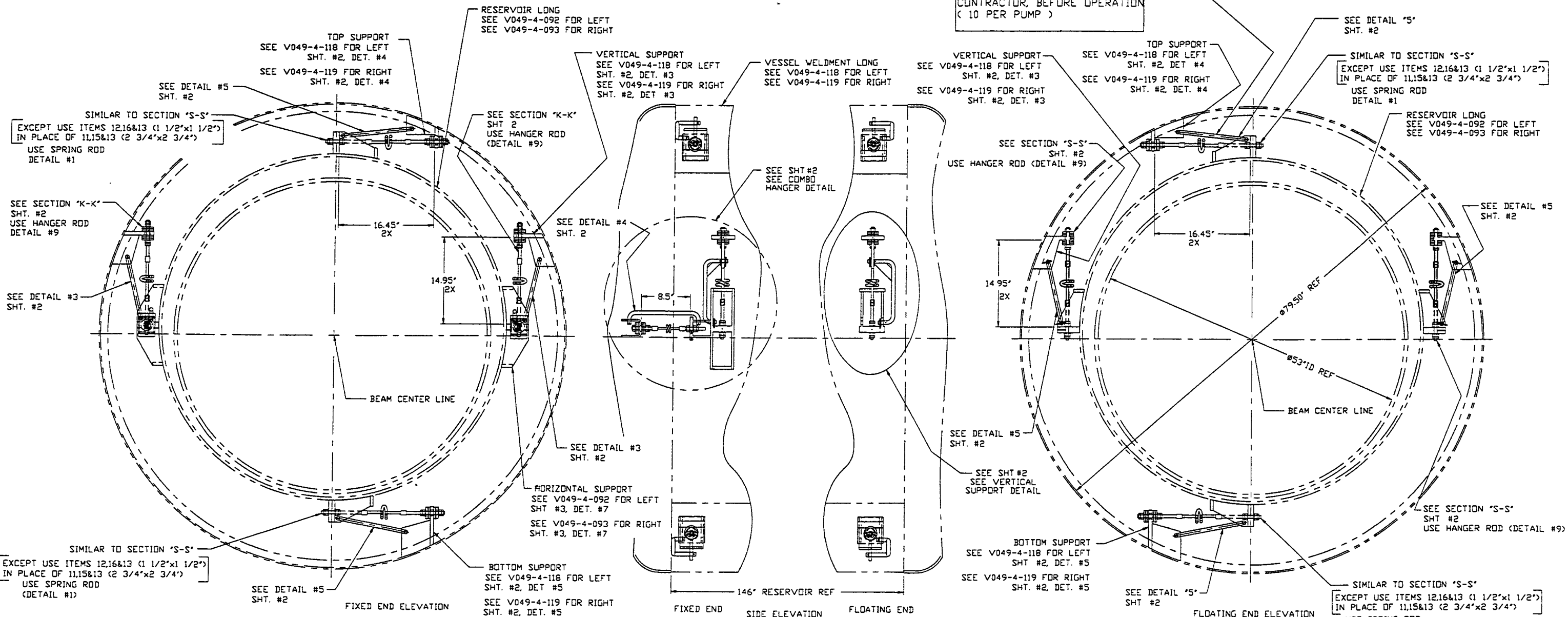
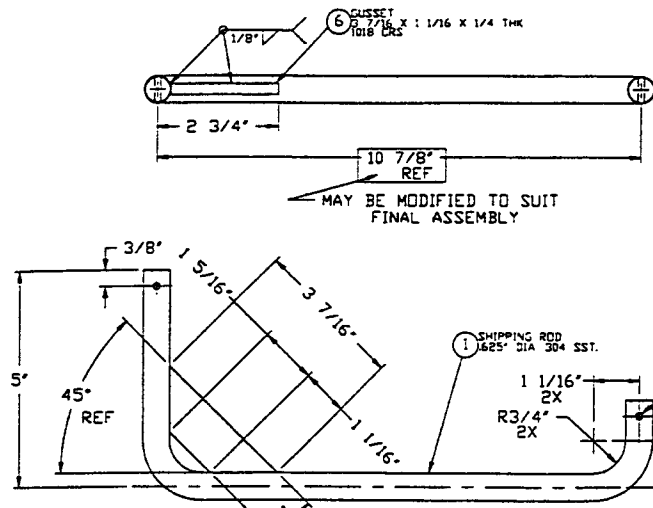


NOTE:
SHIPPING RODS MUST BE
REMOVED AT THE SITE BY THE
CONTRACTOR, BEFORE OPERATION
(10 PER PUMP)

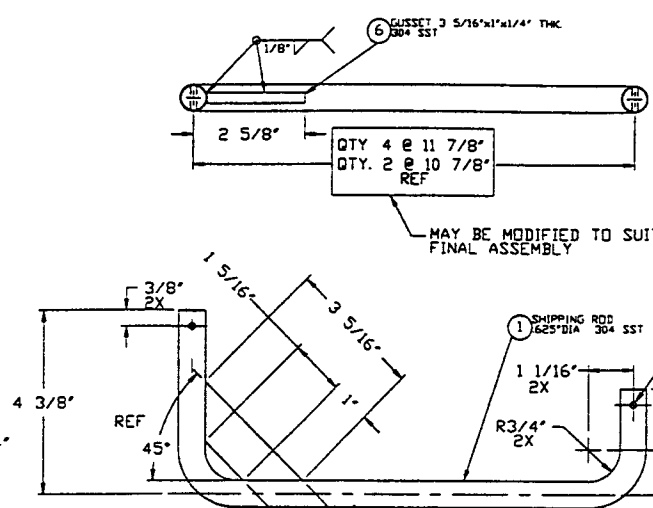


LIGO-D970407-02 V

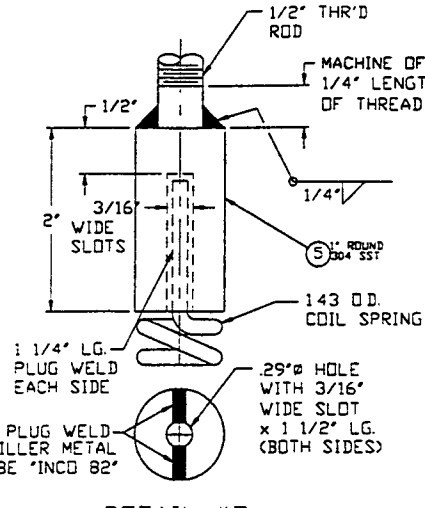
PROPRIETARY AND CONFIDENTIAL THIS DOCUMENT CONTAINS PROPRIETARY INFORMATION BELONGING TO PROCESS SYSTEMS INTERNATIONAL, INC. OR ITS AFFILIATED COMPANIES AND SHALL BE USED ONLY FOR THE PURPOSE FOR WHICH IT WAS SUPPLIED. IT SHALL NOT BE COPIED, REPRODUCED OR OTHERWISE USED, NOR SHALL SUCH INFORMATION BE FURNISHED IN WHOLE OR IN PART TO OTHERS EXCEPT IN ACCORDANCE WITH THE TERMS OF ANY AGREEMENT UNDER WHICH IT WAS SUPPLIED OR WITH THE PRIOR WRITTEN CONSENT OF PROCESS SYSTEMS INTERNATIONAL, INC. AND SHALL BE RETURNED UPON REQUEST.				UNLESS OTHERWISE SPECIFIED DIMENSIONS ARE IN INCHES TOLERANCES: FRACTIONAL ± .01 ANGULAR APPROX ± 30'± 30" BEND ± 2' TWO PLACE DECIMAL ± .03 THREE PLACE DECIMAL ± .015 FINISHED SURFACE RMS BREAK CORNERS IN REMOVE ALL BURRS				2 REISSUED FOR FABRICATION AS NOTED 1 REISSUED FOR FABRICATION 0 ISSUED FOR FOR UPDATE & FAB				20 WALKUP DR. WESTBOROUGH, MASSACHUSETTS 01581 USA BOK PUMP RESERVOIR SUPPORT ASSY LONG -LEFT & RIGHT- LIGO VACUUM EQUIPMENT			
DWG NO. DESCRIPTION DWG NO. DESCRIPTION				USED ON: REV DESCRIPTION				ISSUE DESCRIPTION				DATE DEC#			
REFERENCE DRAWINGS				NEXT ASSY: V049-4-004,006				DMV PEF GS RDC REC PV 1/22/97 0418				DMV PEF GS RDC REC TOV 12/23/96 0346			
8				7				6				5			
4				3				2				1			
SCALE NONE				SHEET 1 OF 2				13 53 51				02 1997			



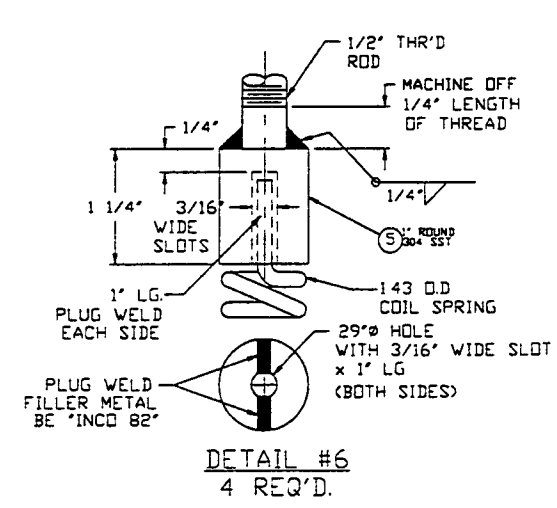
DETAIL #3
2 REQUIRED



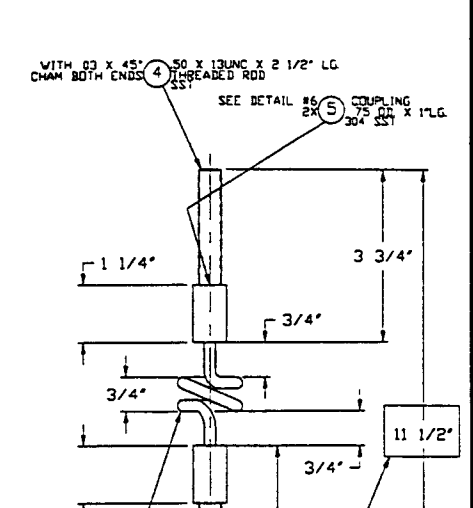
DETAIL #5
6 REQUIRED



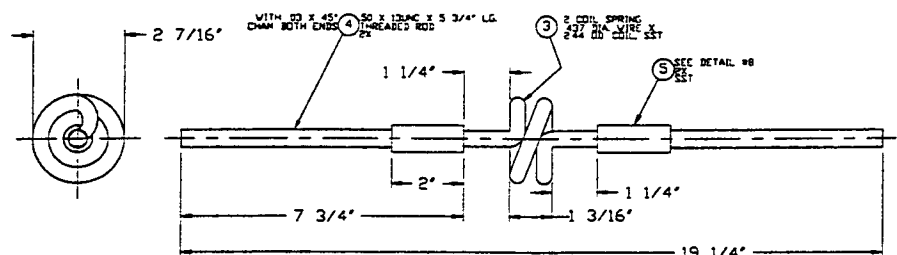
DETAIL #7
8 REQ'D.



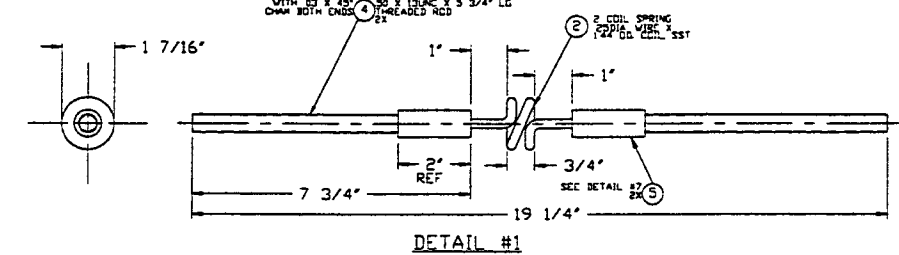
DETAIL #6
4 REQ'D.



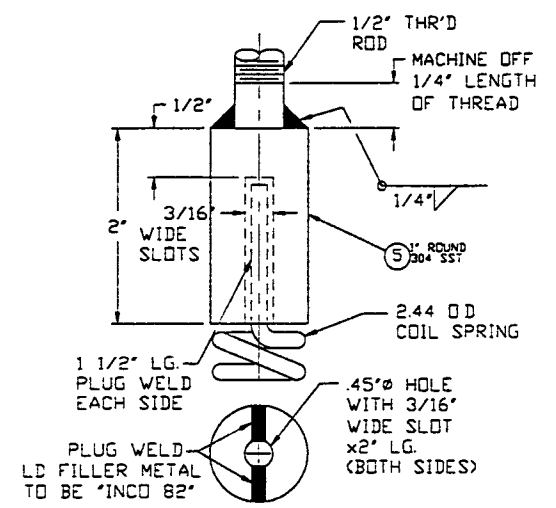
DETAIL #2
2 REQUIRED



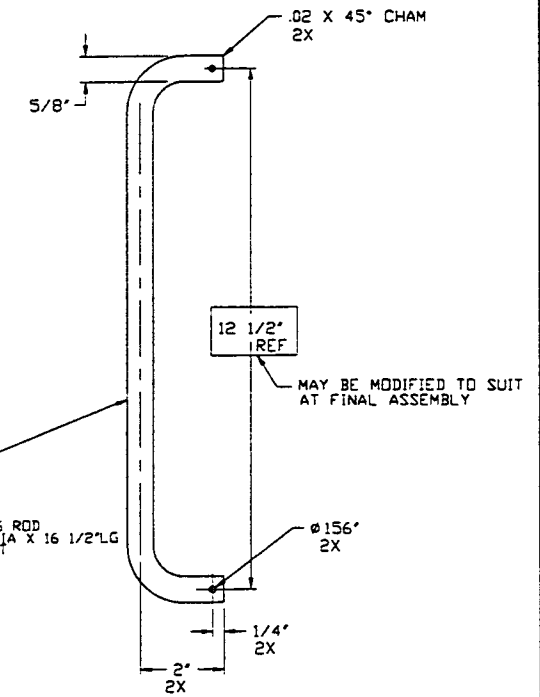
DETAIL #9
4 REQUIRED



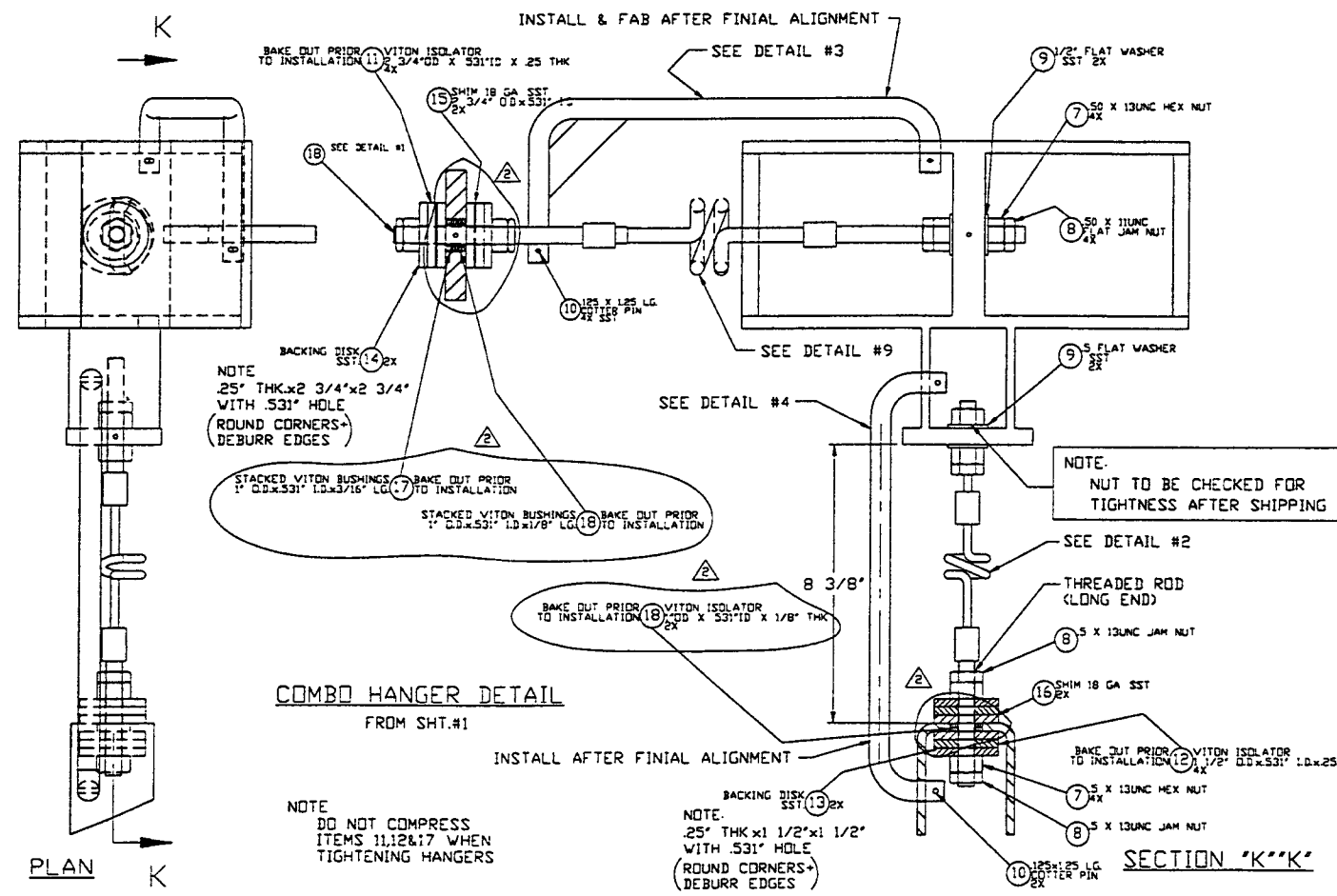
DETAIL #1
4 REQUIRED



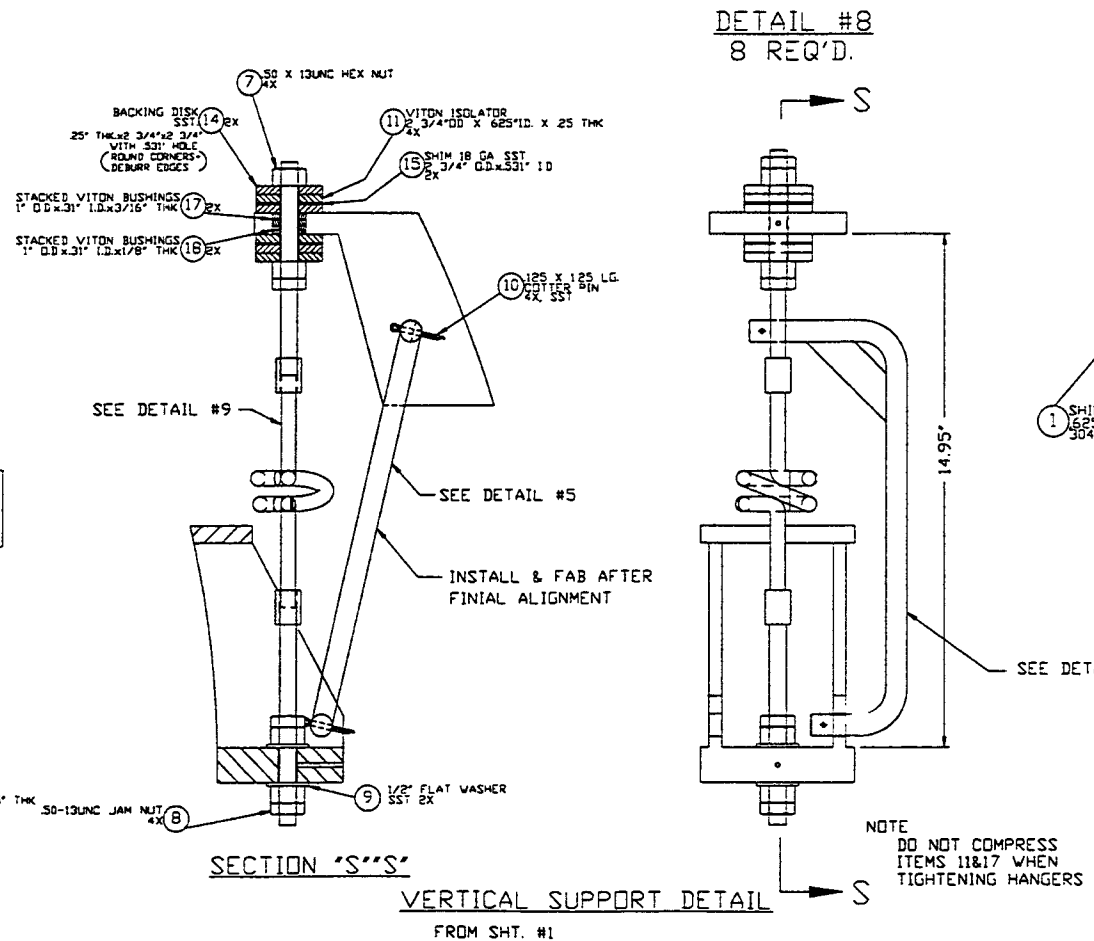
DETAIL #8
8 REQ'D.



DETAIL #4
2 REQUIRED



COMBO HANGER DETAIL
FROM SHT.#1



SECTION 'S'S'S'
VERTICAL SUPPORT DETAIL
FROM SHT. #1

PROCESS SYSTEMS INTERNATIONAL INC. 20 WALKUP DR WESTBOROUGH, MASSACHUSETTS 01581 USA			
80K PUMP RESERVOIR SUPPORT ASS'Y LONG -LEFT & RIGHT-			
LIGD VACUUM EQUIPMENT			
CAT FILE 49409552	SIZE D	DWG NO. V049-4-095	REV 2
SCALE	NONE	SHEET	2 OF 2

SEE SHEET FOR REVISIONS