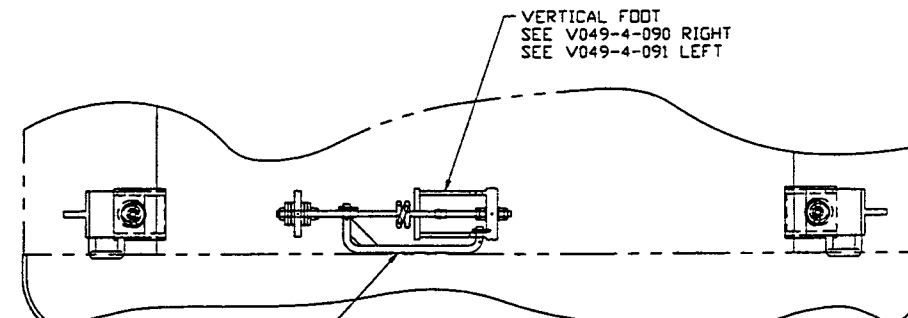
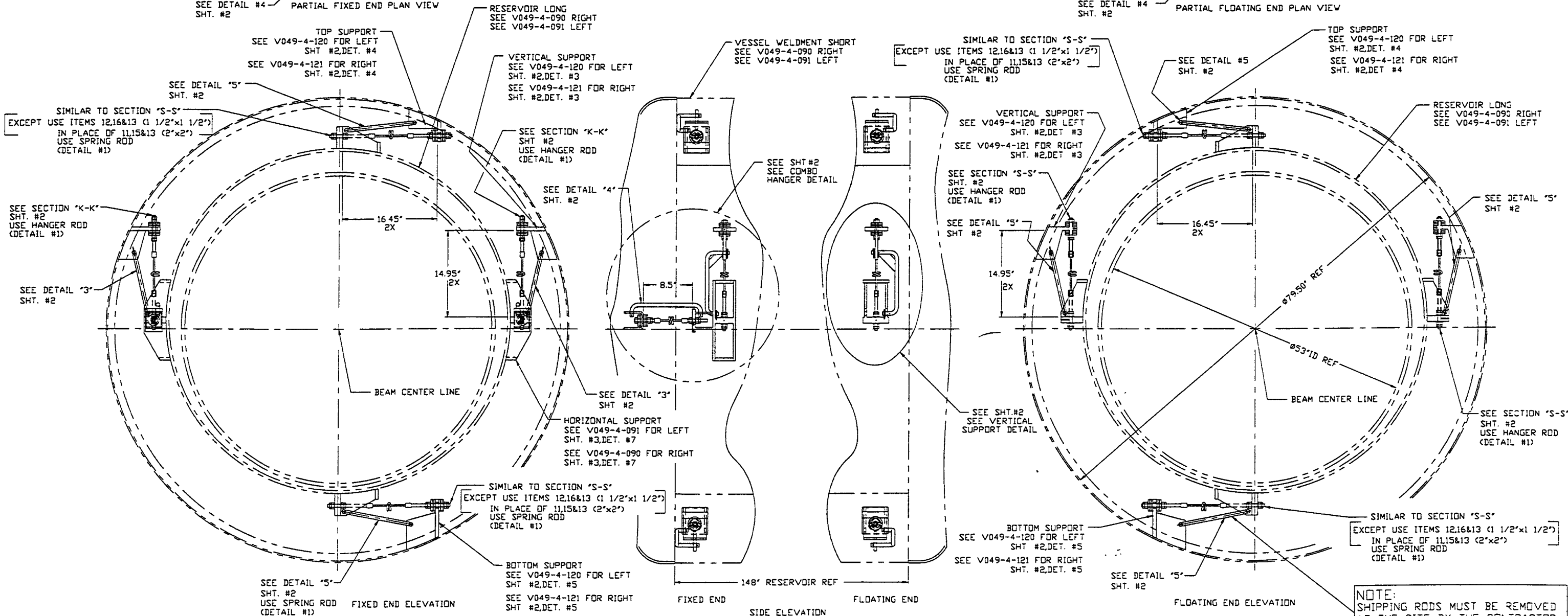


SEE DETAIL #4 PARTIAL FIXED END PLAN VIEW
SHT. #2



SEE DETAIL #4 PARTIAL FLOATING END PLAN VIEW
SHT. #2



NOTE:
SHIPPING RODS MUST BE REMOVED
AT THE SITE BY THE CONTRACTOR
BEFORE OPERATION (10 PER PUMP)

LIGO-D970406-02-V

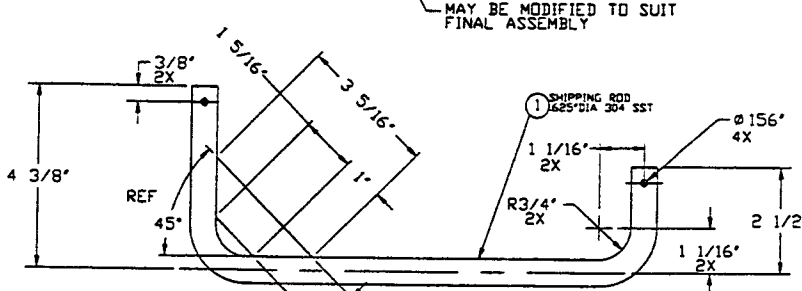
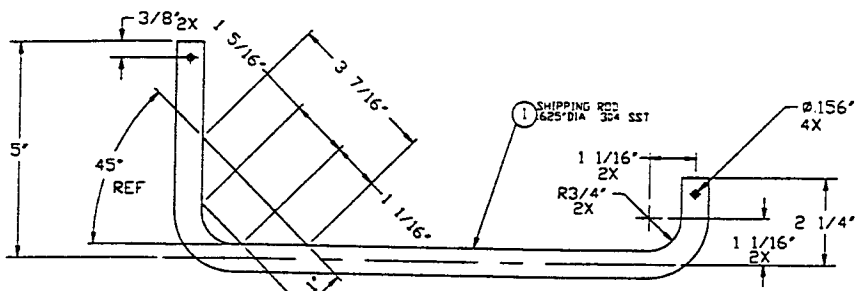
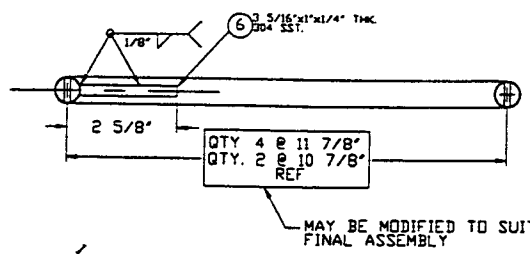
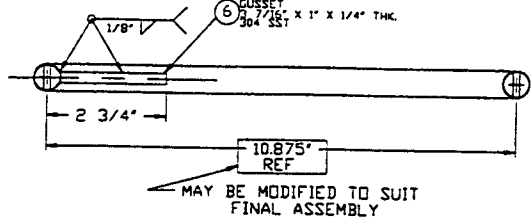
<p>PROPRIETARY AND CONFIDENTIAL</p> <p>THIS DOCUMENT CONTAINS PROPRIETARY INFORMATION BELONGING TO PROCESS SYSTEMS INTERNATIONAL, INC OR ITS AFFILIATED COMPANIES AND SHALL BE USED ONLY FOR THE PURPOSE FOR WHICH IT WAS SUPPLIED. IT SHALL NOT BE COPIED, REPRODUCED OR OTHERWISE USED, NOR SHALL SUCH INFORMATION BE FURNISHED IN WHOLE OR IN PART TO OTHERS EXCEPT IN ACCORDANCE WITH THE TERMS OF ANY AGREEMENT UNDER WHICH IT WAS SUPPLIED OR WITH THE WRITTEN CONSENT OF PROCESS SYSTEMS INTERNATIONAL, INC AND SHALL BE RETURNED UPON REQUEST.</p>		<p>UNLESS OTHERWISE SPECIFIED DIMENSIONS ARE IN INCHES</p> <p>TOLERANCES:</p> <p>FRACTIONAL ±1</p> <p>ANGULAR APPROX 30°-30' BEND ±2°</p> <p>FIN PLATE DECIMAL ±.03</p> <p>THREE PLACE DECIMAL ±.015</p> <p>FINISHED SURFACE RMS</p> <p>BREAK CORNERS TO OUTLINE REMOVE ALL BURRS</p>		<p>2 REISSUED FOR FABRICATION AS NOTED</p> <p>1 REISSUED FOR FABRICATION</p> <p>0 ISSUED FOR FRD UPDATE & FAB</p>		<p>REV DESCRIPTION</p>		<p>ISSUE DESCRIPTION</p>		<p>SCALE NONE SHEET 1 OF 2</p>			
DWG NO	DESCRIPTION	DWG NO	DESCRIPTION	REV	DESCRIPTION	CHKD	DRWN	DATE	DES	CAB FILE	SIZE	DWG NO	REV
										V0494094	D	V049-4-094	2
<p>REFERENCE DRAWINGS</p>				<p>USED ON: NEXT ASSY: D V049-4-005.007</p>				<p>ISSUE DESCRIPTION</p>				<p>SCALE NONE SHEET 1 OF 2</p>	

PROCESS SYSTEMS INTERNATIONAL, INC.
20 WALKUP DR. WESTBOROUGH, MASSACHUSETTS 01581 USA

BOK PUMP RESERVOIR SUPPORT ASS'Y
SHORT - LEFT & RIGHT -

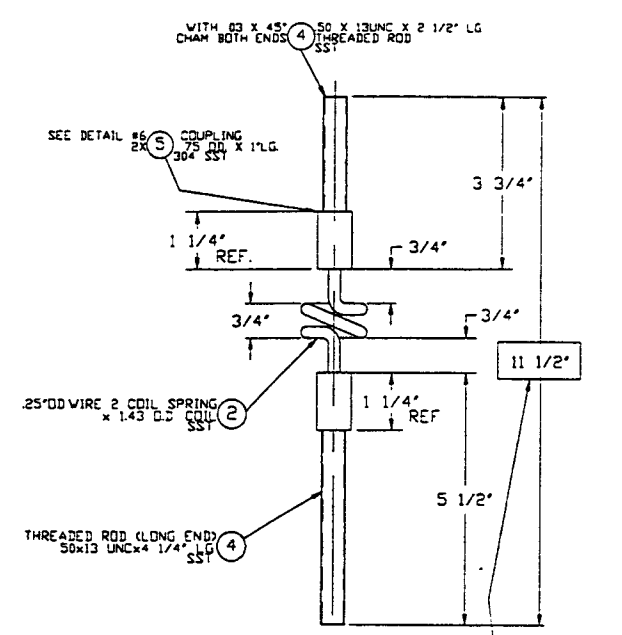
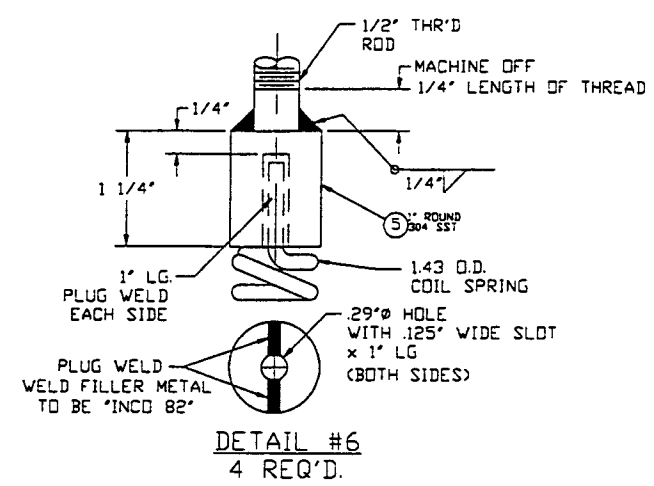
LIGO VACUUM EQUIPMENT

Feb 03, 1997 - 13:58:12



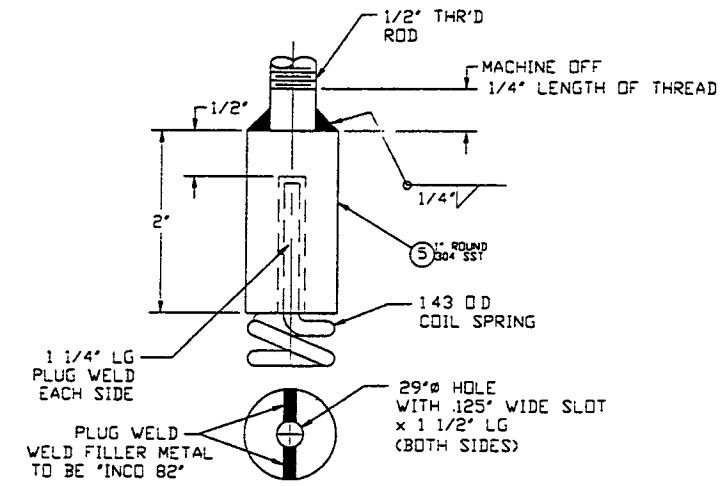
DETAIL #3
2 REQUIRED

DETAIL #5
6 REQUIRED

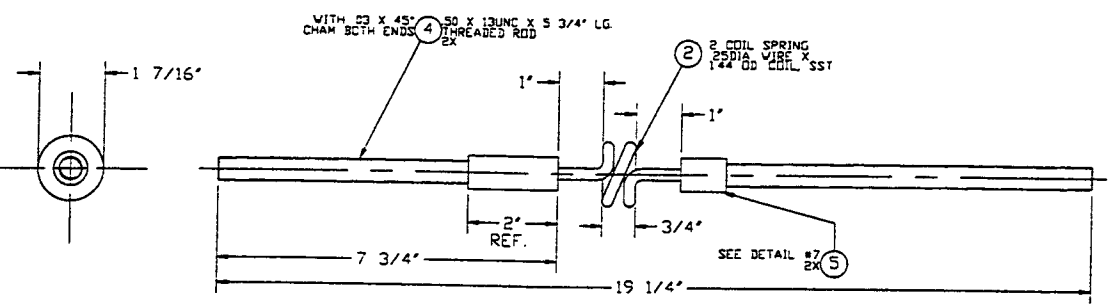


DETAIL #6
4 REQ'D.

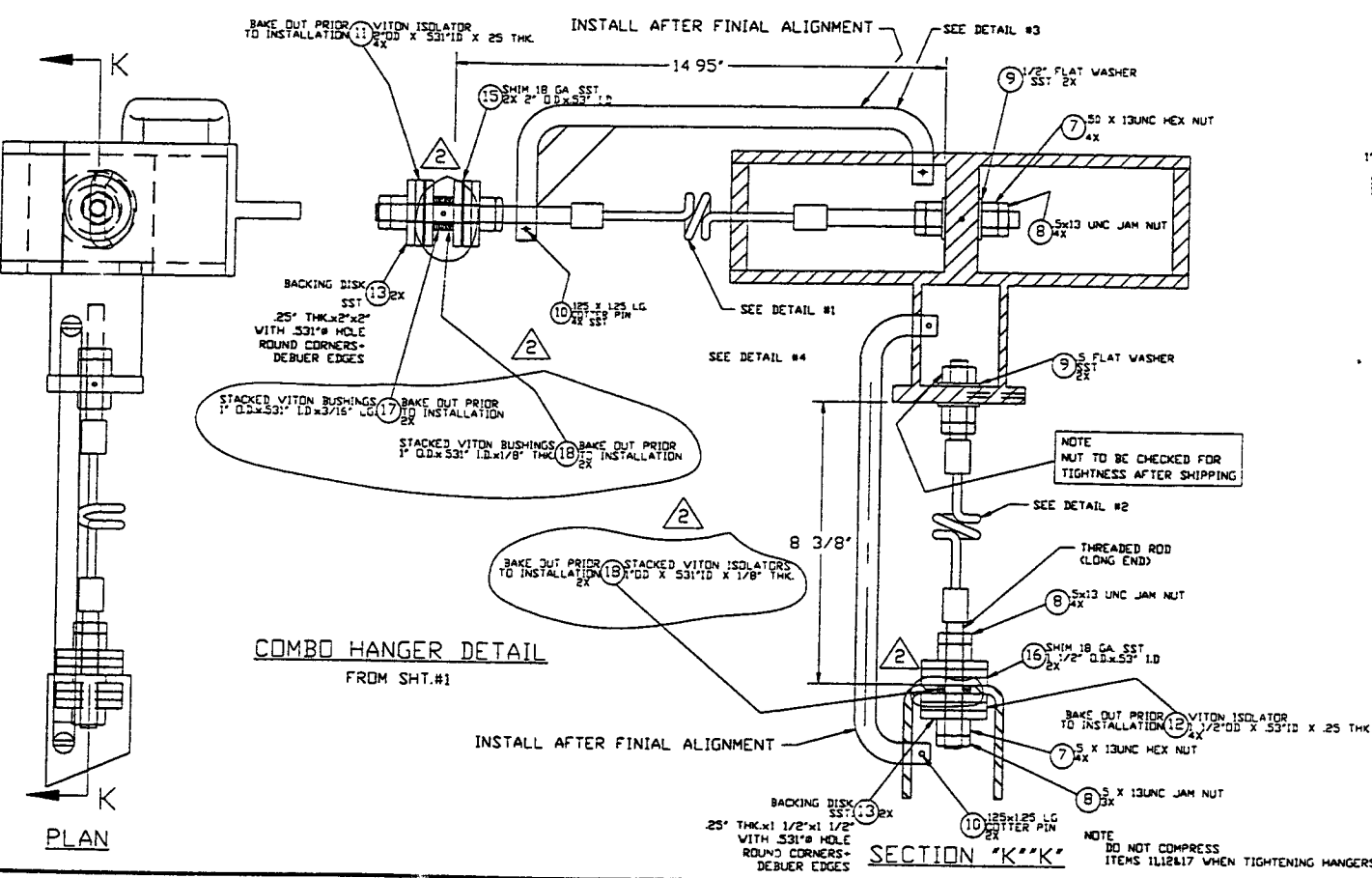
DETAIL #2
2 REQUIRED



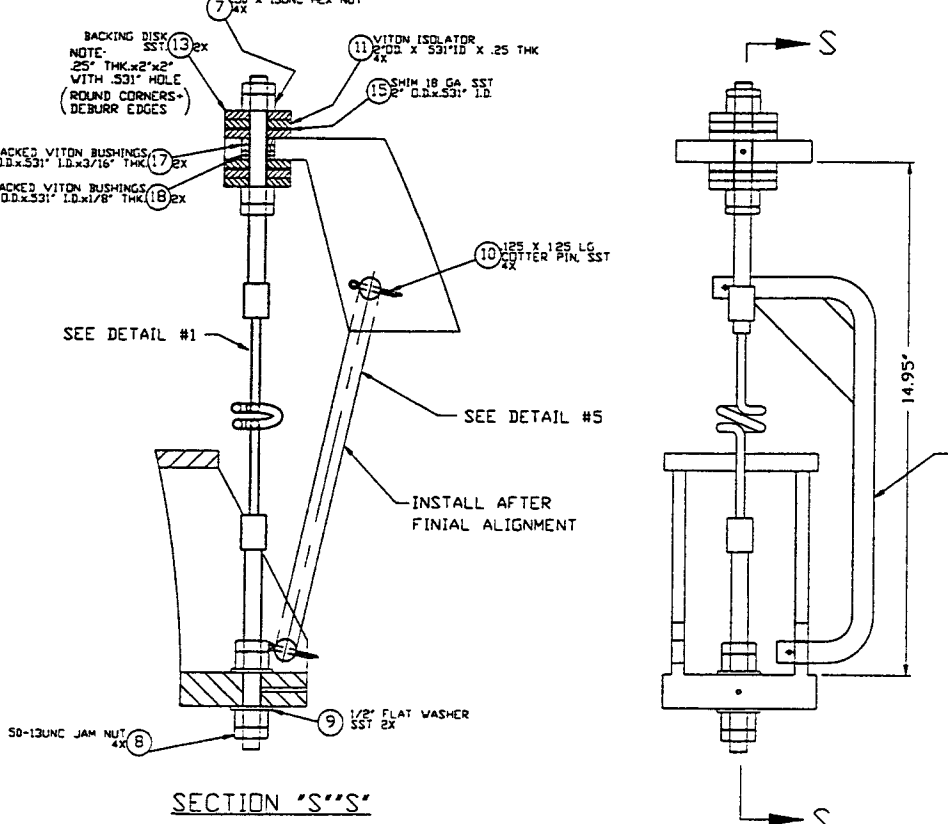
DETAIL #7
16 REQ'D.



DETAIL #1
8 REQUIRED

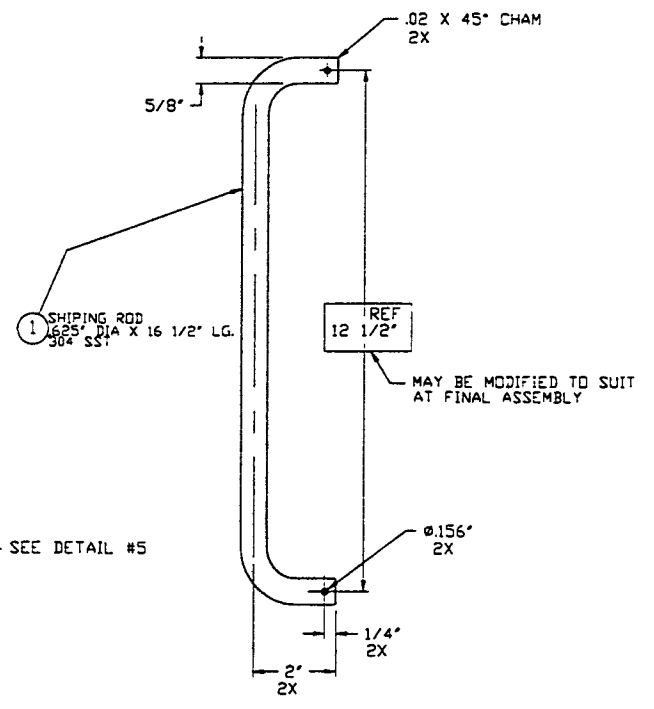


COMBO HANGER DETAIL
FROM SHT. #1



SECTION 'S'S'

VERTICAL SUPPORT DETAIL
FROM SHT. #1



DETAIL #4
2 REQUIRED

SEE SHEET 1 FOR REVISIONS

PROCESS SYSTEMS INTERNATIONAL INC. 20 WALKUP DR. WESTBOROUGH, MASSACHUSETTS 01581 USA			
80K PUMP RESERVOIR SUPPORT ASS'Y SHORT - LEFT & RIGHT - LIGO VACUUM EQUIPMENT			
CAD FILE	SIZE	DWG. NO.	REV.
49409452	D	V049-4-094	2
SCALE	NONE	SHEET	2 OF 2

FEB 03, 1997 - 140782