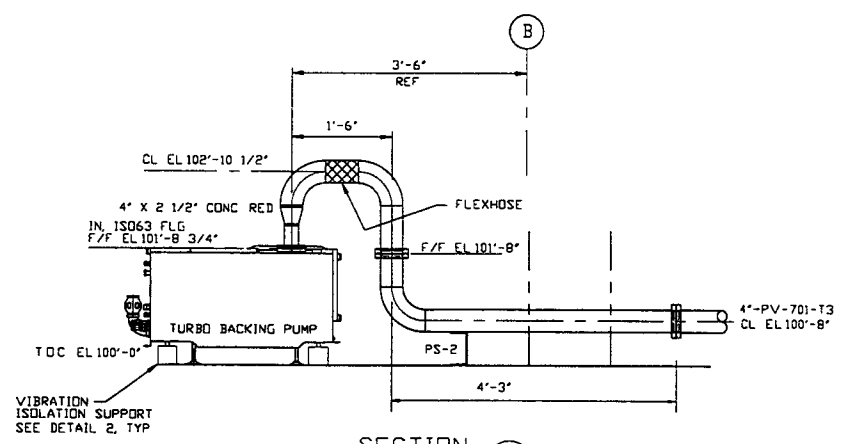
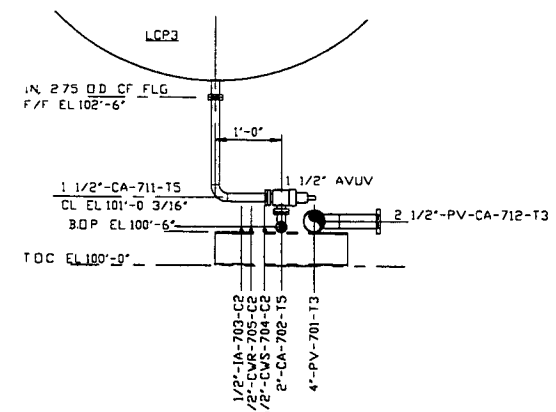


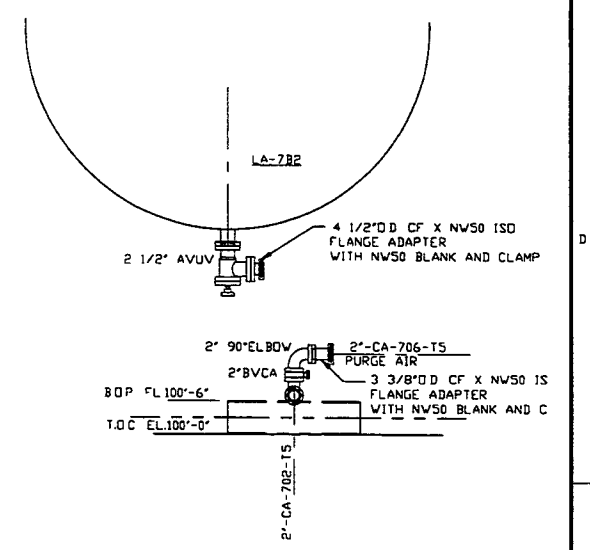
SECTION F
SCALE: 3/8"=1'-0" V049-5-046, SHT2



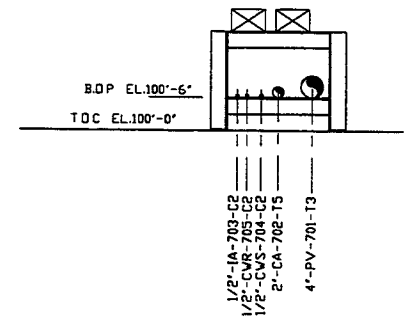
SECTION C
SCALE: 3/4"=1'-0" V049-5-046, SHT1



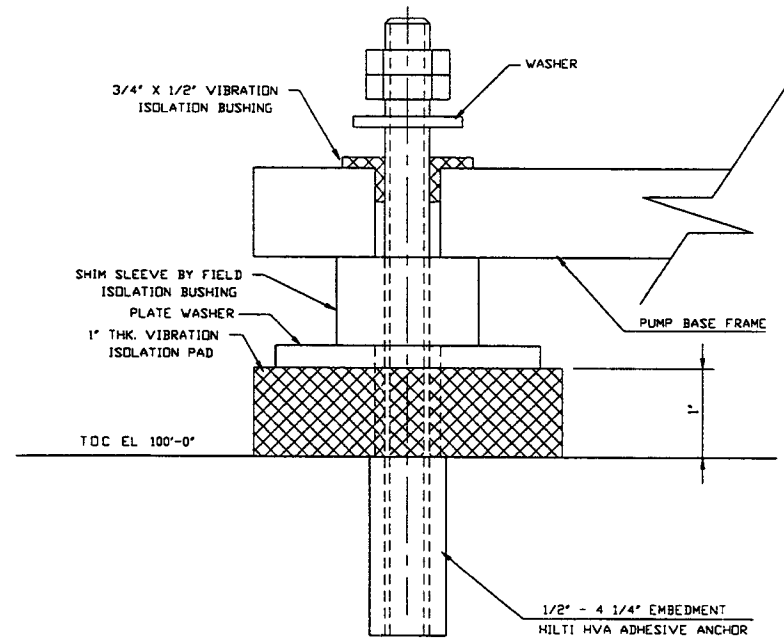
SECTION D
SCALE: 3/4"=1'-0" V049-5-046, SHT1



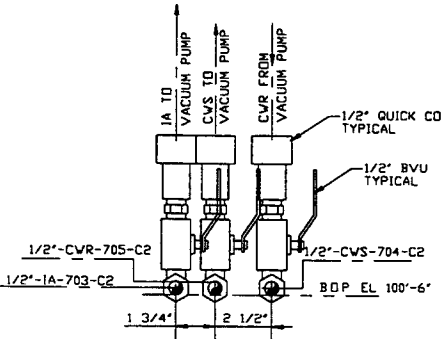
SECTION E
SCALE: 3/4"=1'-0" V049-5-046, SHT1



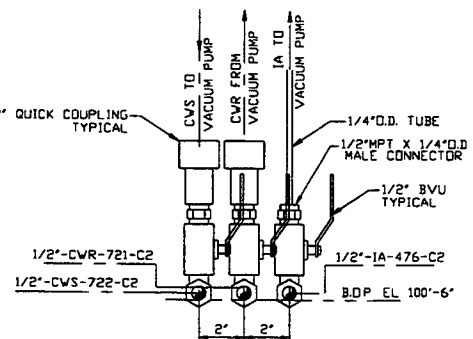
SECTION A
SCALE: 3/4"=1'-0" V049-5-046, SHT1



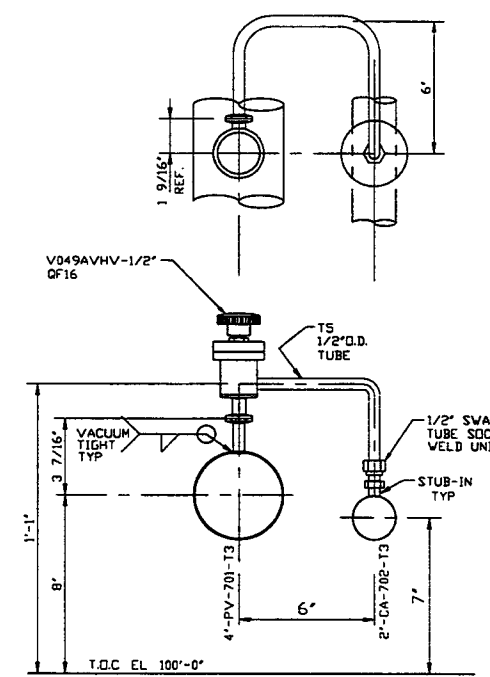
DETAIL 2
SCALE: FULL V049-5-046, SHT1



DETAIL 1
SCALE: 3"=1'-0" V049-5-046, SHT1



DETAIL 4
SCALE: 3"=1'-0" V049-5-046, SHT1



DETAIL 3
SCALE: 3"=1'-0" V049-5-046, SHT1

PROPRIETARY AND CONFIDENTIAL THIS DOCUMENT CONTAINS PROPRIETARY INFORMATION BELONGING TO PROCESS SYSTEMS INTERNATIONAL, INC. OR ITS AFFILIATED COMPANIES AND SHALL BE USED ONLY FOR THE PURPOSE FOR WHICH IT WAS SUPPLIED. IT SHALL NOT BE COPIED, REPRODUCED OR OTHERWISE USED, NOR SHALL SUCH INFORMATION BE FURNISHED IN WHOLE OR IN PART TO OTHERS EXCEPT IN ACCORDANCE WITH THE TERMS OF ANY AGREEMENT UNDER WHICH IT WAS SUPPLIED OR WITH THE PRIOR WRITTEN CONSENT OF PROCESS SYSTEMS INTERNATIONAL, INC. AND SHALL BE RETURNED UPON REQUEST.				UNLESS OTHERWISE SPECIFIED DIMENSIONS ARE IN INCHES TOLERANCES: FRACTIONAL: ± ANGULAR: ± TWO PLACE DECIMAL: ± THREE PLACE DECIMAL: ± FINISHED SURFACE RNS: ± BREAK CORNERS IN: ± REMOVE ALL BURS				PROCESS SYSTEMS INTERNATIONAL, INC. 20 WALKUP DR. WESTBOROUGH, MASSACHUSETTS 01581 USA PIPING ARRANGEMENT, SECTIONS LEFT END STATION LIGO LOUISIANA SITE LIGO VACUUM EQUIPMENT			
DWG NO: V049-5-046 DESCRIPTION: PIPING ARRANGEMENT PLAN LEFT END STATION		DWG NO: V049-5-009 DESCRIPTION: EQUIPMENT ARRANGEMENT LEFT END STATION		DWG NO: 1101102 DESCRIPTION: LIGO VACUUM EQUIPMENT END STATION		DO NOT SCALE THIS DRAWING: 0 USED ON: REV: 0 NEXT ASS'Y:		ISSUED FOR: FDR CHKD: RM DRWN: JIM DUNN DATE: 1.13.97 DECD: 0406		CAD FILE: V0495048 SIZE: D DWG NO: V049-5-048 REV: 0 SCALE: AS NOTED SHEET: 1 OF 1	