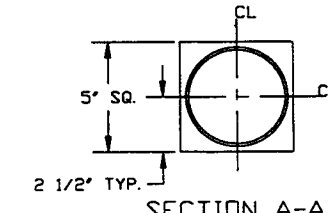
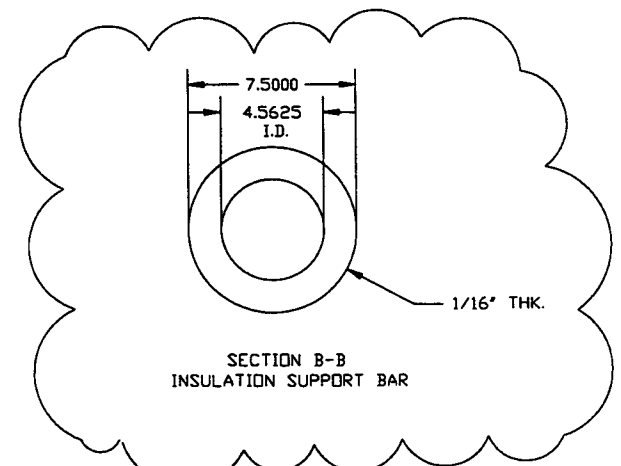


Raymond D. Ciatto 6/20/97
 EXPIRES 8/1/99



NOTE: PAINT CARBON STEEL PORTION WHITE PER PSI SPEC V049-2-139.

PROPRIETARY AND CONFIDENTIAL THIS DOCUMENT CONTAINS PROPRIETARY INFORMATION BELONGING TO PROCESS SYSTEMS INTERNATIONAL, INC. OR ITS AFFILIATED COMPANIES AND SHALL BE USED ONLY FOR THE PURPOSE FOR WHICH IT WAS SUPPLIED. IT SHALL NOT BE COPIED, REPRODUCED OR OTHERWISE USED, NOR SHALL SUCH INFORMATION BE FURNISHED IN WHOLE OR IN PART TO OTHERS EXCEPT IN ACCORDANCE WITH THE TERMS OF ANY AGREEMENT UNDER WHICH IT WAS SUPPLIED OR WITH THE PRIOR WRITTEN CONSENT OF PROCESS SYSTEMS INTERNATIONAL, INC. AND SHALL BE RETURNED UPON REQUEST.				UNLESS OTHERWISE SPECIFIED DIMENSIONS ARE IN INCHES TOLERANCES: FRACTIONAL ± ANGULAR ± 0°-30' BEND ± 2° TWO PLACE DECIMAL ± .01 THREE PLACE DECIMAL ± .005 FINISHED SURFACE ± .005 BREAK CORNERS BY CUT REMOVE ALL BURRS				1 ISSUED FOR FABRICATION/INSTALLATION 0 ISSUED FOR FABRICATION				PER GS [Signature] JR 06/13/97 0385 RM 12/3/96				PROCESS SYSTEMS INTERNATIONAL, INC. 20 WALKUP DR. WESTBOROUGH, MASSACHUSETTS 01581 USA REGEN HEATER SHELL 4" FLANGE LIGO VACUUM EQUIPMENT CAD FILE: V0494178 SIZE: D DWG. NO.: V049-4-178 REV. 1 SCALE: SHEET 1 OF 1			
DVG. NO. DESCRIPTION REFERENCE DRAWINGS				USED ON: V049-4-176				REV. DESCRIPTION				CHKD DRWN DATE DEC#							

LIGO-D970366-01-V