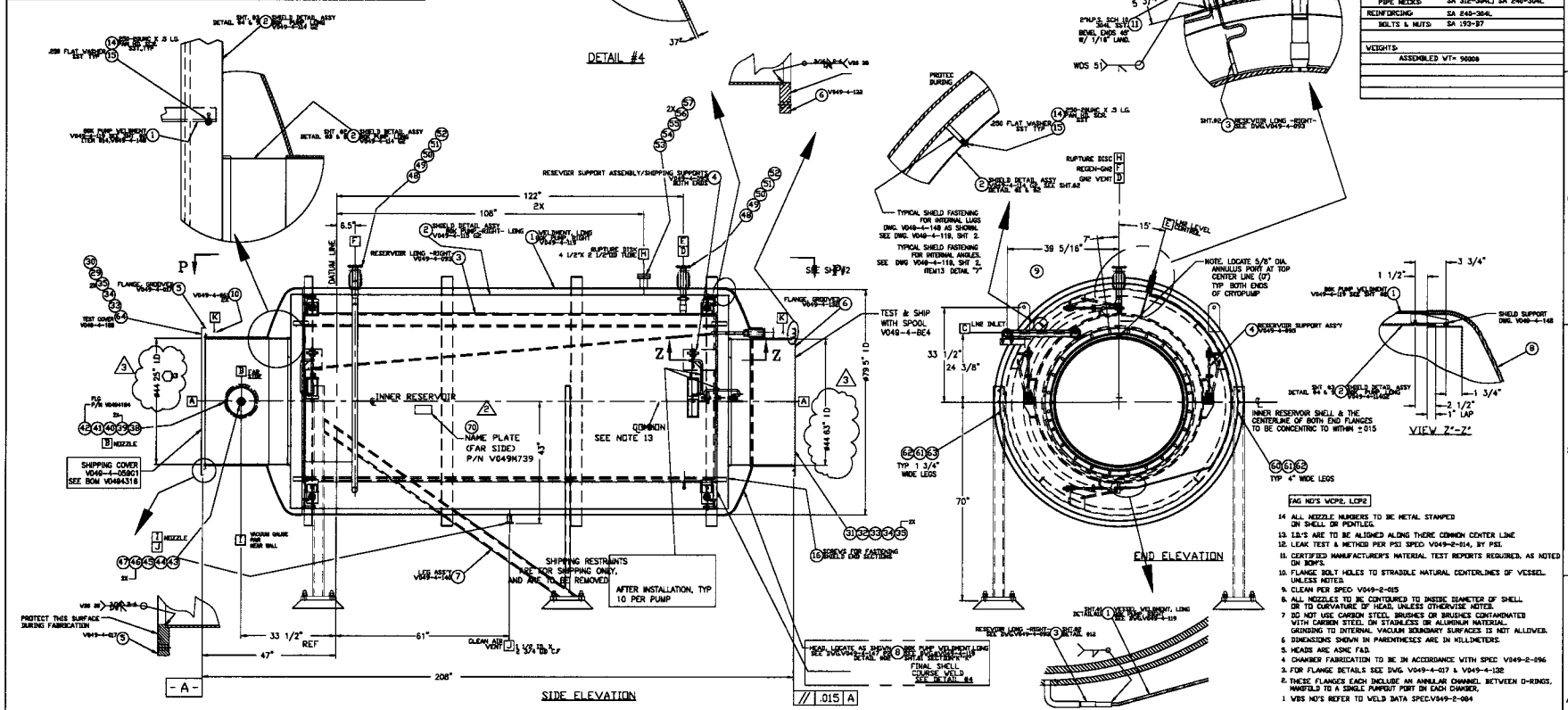


MARK	QTY	SIZE	RATING	NOZZLE SCHEDULE	DESCRIPTION	MARK	QTY	SIZE	TYPE	DESCRIPTION
A	2	44.83" ID		SEE NOTE 1	LASER BEAM / ACCESS	L1	1	1/4"	FPT	LN ₂ LEVEL CONTROL
B	1	10" OD TUBE		W/BLIND FLANGE	PUMPOUT PORT					
C	1	1/2" 1/2"		W/BLIND FLANGE	LN ₂ INLET	L2	1	1/4"	FPT	LN ₂ LEVEL CONTROL
D	1	1/2" PPE		W/BLIND FLANGE	GN ₂ VENT					
E	1	2" OD PPE		W/BLIND FLANGE	SEE L1 & L2					
F	1	1/2" PPE		W/BLIND FLANGE	REGEN-GN ₂					
I	1	1/2" OD TUBE		3/4" NO. CORNER W/BLIND FLANGE	VACUUM GAUGE PAIR					
J	1	1/2" OD TUBE		3/4" NO. CORNER W/BLIND FLANGE	PURGE AIR					
H	1	2 1/2" OD TUBE		3/4" NO. CORNER W/BLIND FLANGE	RUPTURE DISC					
K	2	3/4" OD TUBE		3/4" NO. CORNER W/BLIND FLANGE	FLANGE ANNULUS PUMPOUT PORT					



SYMBOL	CHARACTERISTIC	UNLESS OTHERWISE SPECIFIED DIMENSIONS ARE IN INCHES	REV	DESCRIPTION	DATE
2	REVISOR FOR FABRICATION AS NOTED		01/23/97	0546	
2	REVISOR FOR FABRICATION AS NOTED		5/26/97	0423	
1	ISSUED FOR FABRICATION		1/15/97	0400	
0	ISSUED FOR FABRICATION		12/31/96	0346	

REV	DESCRIPTION	DATE	BY	CHKD	DATE
1	ISSUED FOR FABRICATION	12/31/96	0346		

PROCESS SYSTEMS INTERNATIONAL INC.
30 WALNUT DR. WESTBOROUGH, MASSACHUSETTS 01581 USA

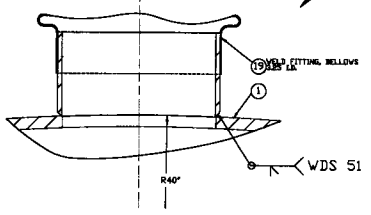
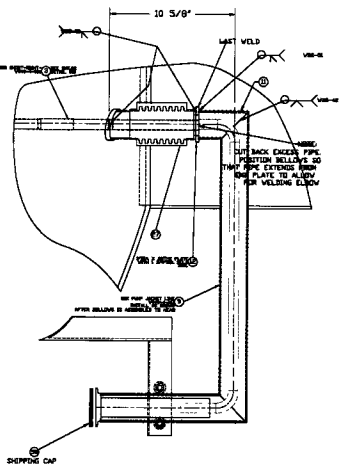
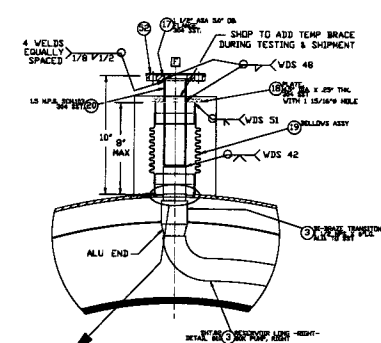
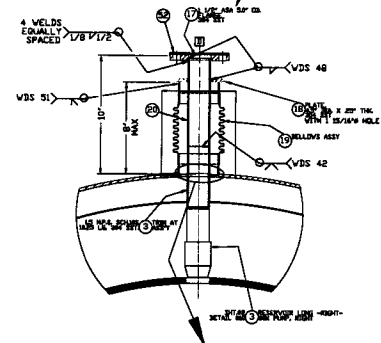
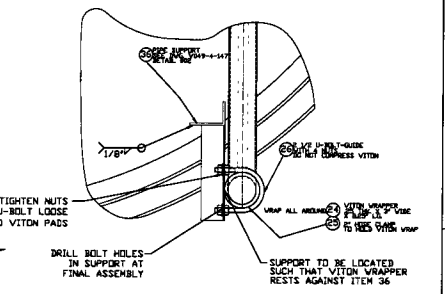
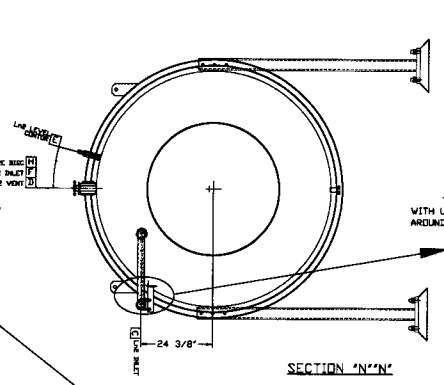
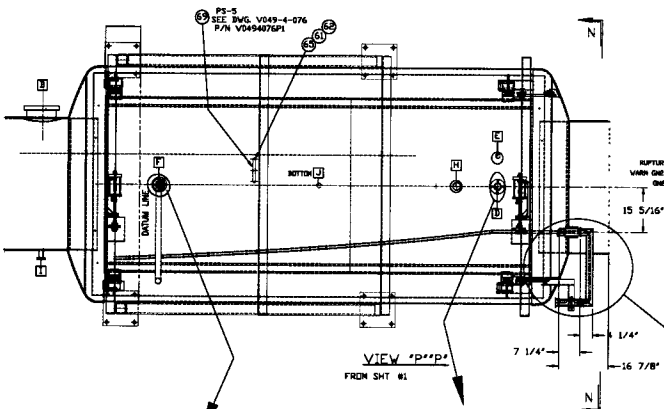
BCK PUMP GENERAL ARR-NG-LONG-RIGHT

LIGO VACUUM EQUIPMENT

DATE FILE: 4/9/96
SCALE: 1/2" = 1'-0"

REV: 3
SHEET: 1 OF 2

LIGO-D970349-03-V



SIX SHEET 1 FIVE REVISIONS

PROCESS SYSTEMS INTERNATIONAL, INC.
100 WOOD ST. WESTPORTER, MASSACHUSETTS 01981 USA

BOX PUMP GENERAL ARR'G-LONG-RIGHT

LIGO VACUUM EQUIPMENT

QTY FILE	REV	DWG NO	REV
1948826	1	VD49-4-006	3
SCALE	NONE	SHEET	2 OF 2