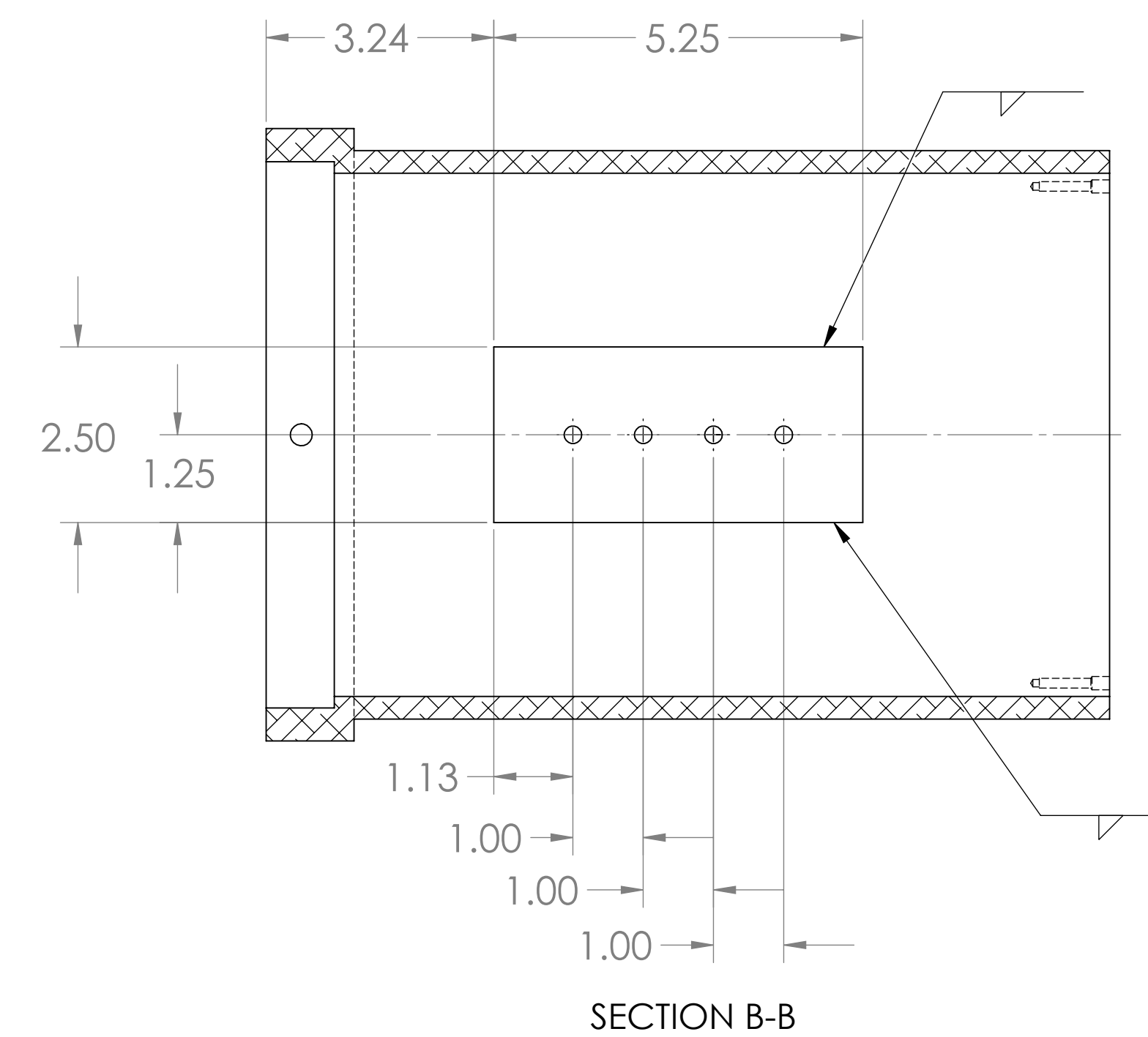
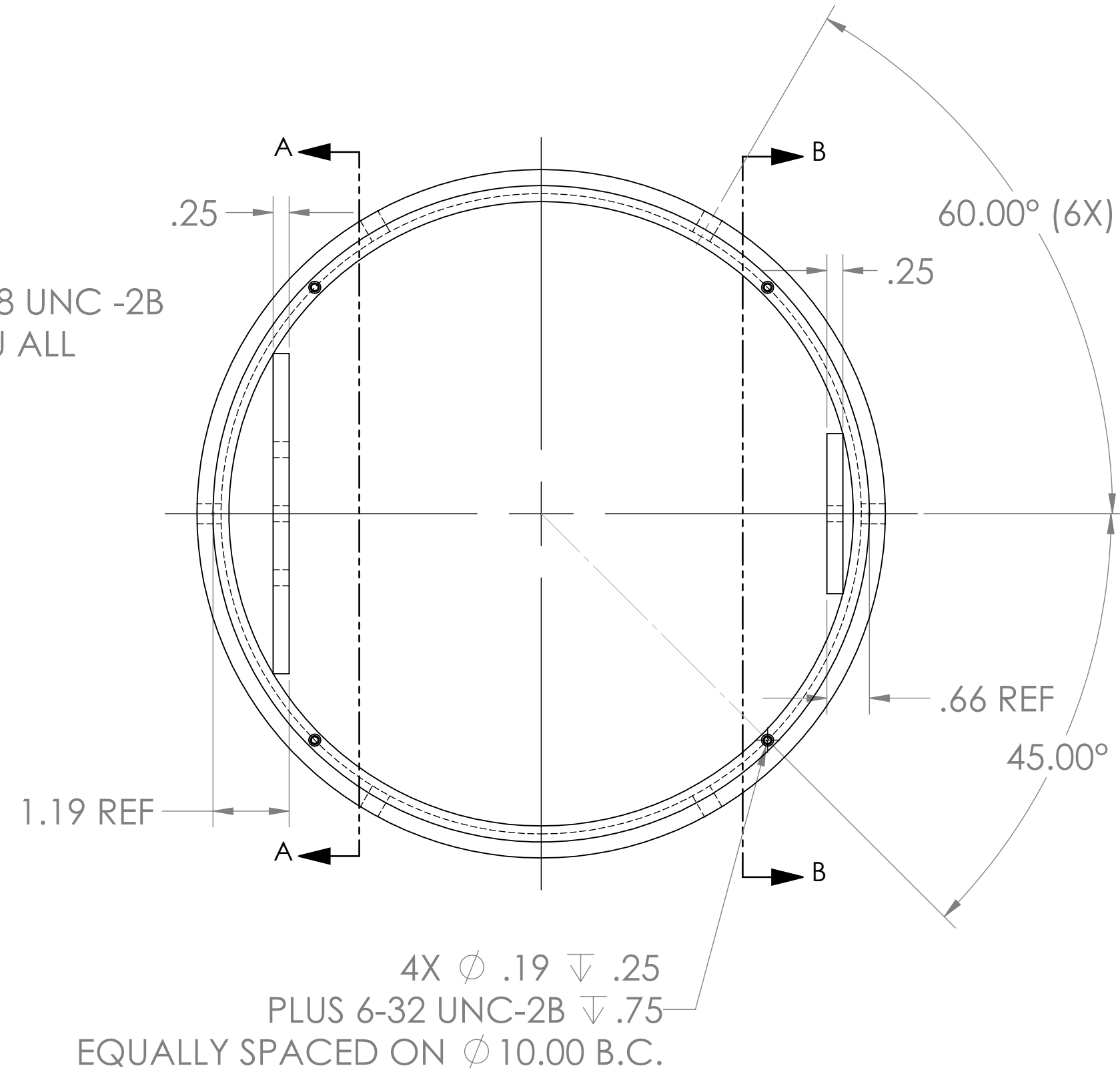
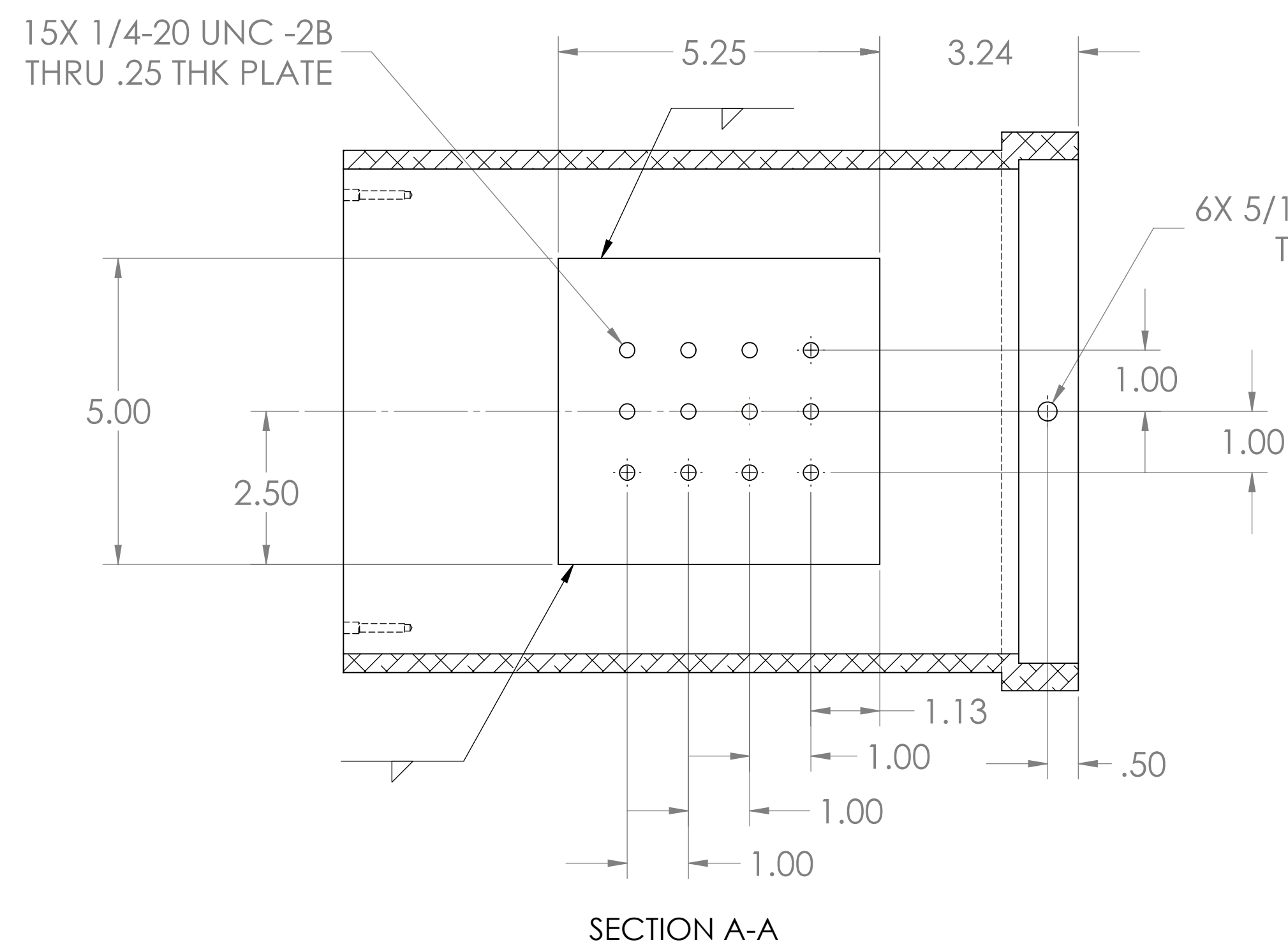
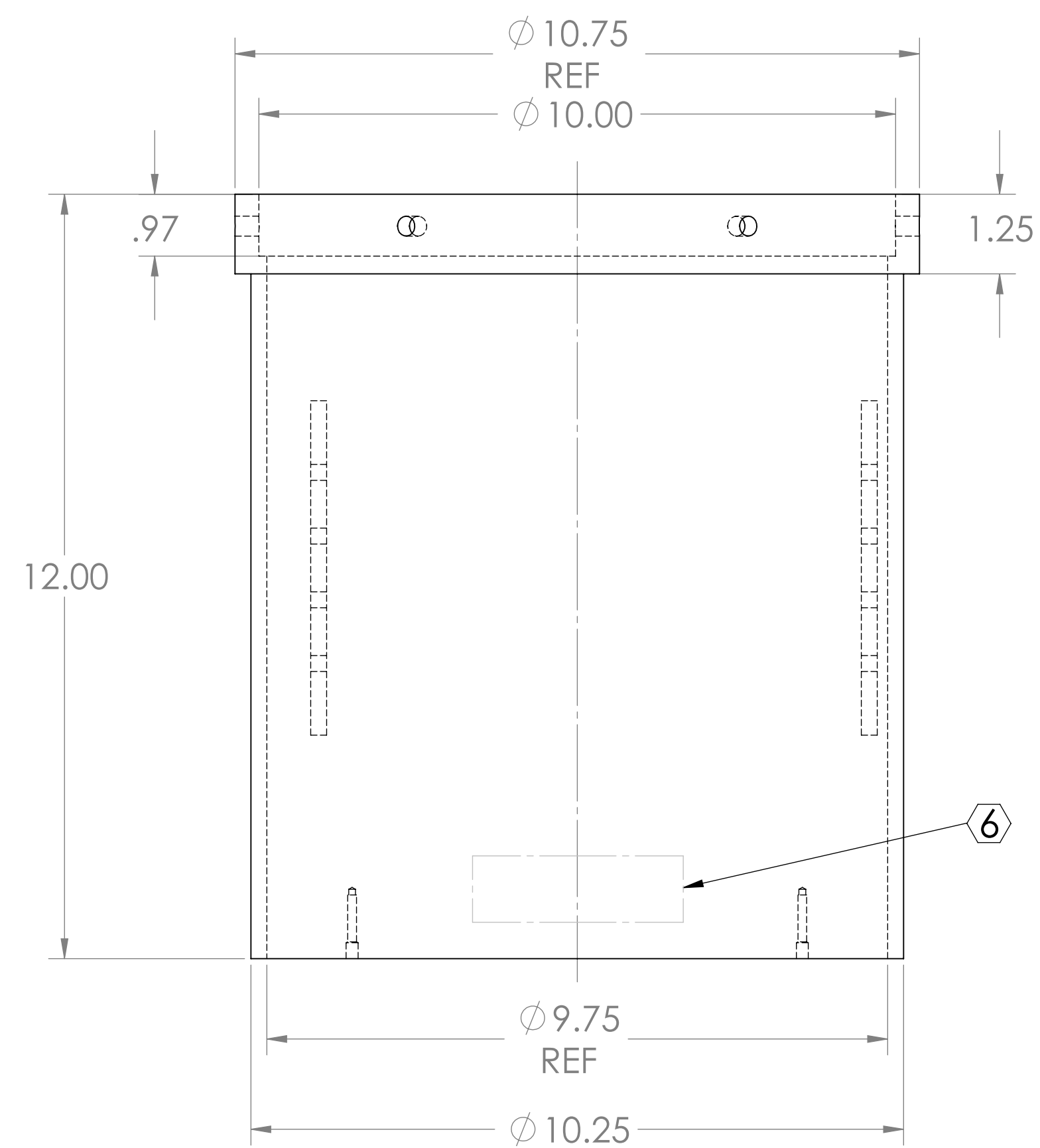


NOTES:

1. MAKE FROM ϕ 10.75 X .50 WALL ALUM TUBING
TYPE 6061-T6
2. ABRASIVE CLEAN INNER AND OUTER SURFACE
3. CLEAR ANODIZE PER MIL-A-8625
4. DO NOT SCALE FROM DRAWING.
5. REMOVE ALL SHARP EDGES, R.02 MIN.
6. SCRIBE, ENGRAVE OR MECHANICALLY STAMP
(NO INKS OR DYES) DRAWING PART NUMBER, REVISION
ON NOTED SURFACE OF PART FOLLOWED ON THE NEXT
LINE WITH A THREE DIGIT SERIAL NUMBER. SERIAL NUMBERS
START AT 001 FOR THE FIRST PART AND PROCEED
CONSECUTIVELY. USE .12" HIGH CHARACTERS. A VIBRATORY
TOOL MAY BE USED.
EXAMPLE: D970213-C
S/N 001

REV.	DATE	DCN #	DRAWING TREE #
A	5/98	INITIAL RELEASE	
B	9/98	ADDED NOTE 1	
C	13 MAR 08	E080100	



NOTES: (UNLESS OTHERWISE SPECIFIED)		PARTS LIST	
DIMENSIONS ARE IN INCHES		LIGO CALIFORNIA INSTITUTE OF TECHNOLOGY MASSACHUSETTS INSTITUTE OF TECHNOLOGY IGR, GLASGOW UNIVERSITY GEO 400 GROUP	
TOLERANCES: XXX ± 0.01 XXXX ± 0.005		SYSTEM LIGO	
ANGULAR ± 1°		SUB-SYSTEM AOS	
MATERIAL 6061-T6 ALUM		NEXT ASSY D970211	
FINISH 63		PART NAME Camera Mounting Tube	
DRAWN	NAME DATE	SIZE DWG. NO.	REV.
CHECKED	K. MOGON 9/98	D D970213	C
APPROVED		SCALE: 1:2	PROJECTION:
		SHEET 1 OF 1	