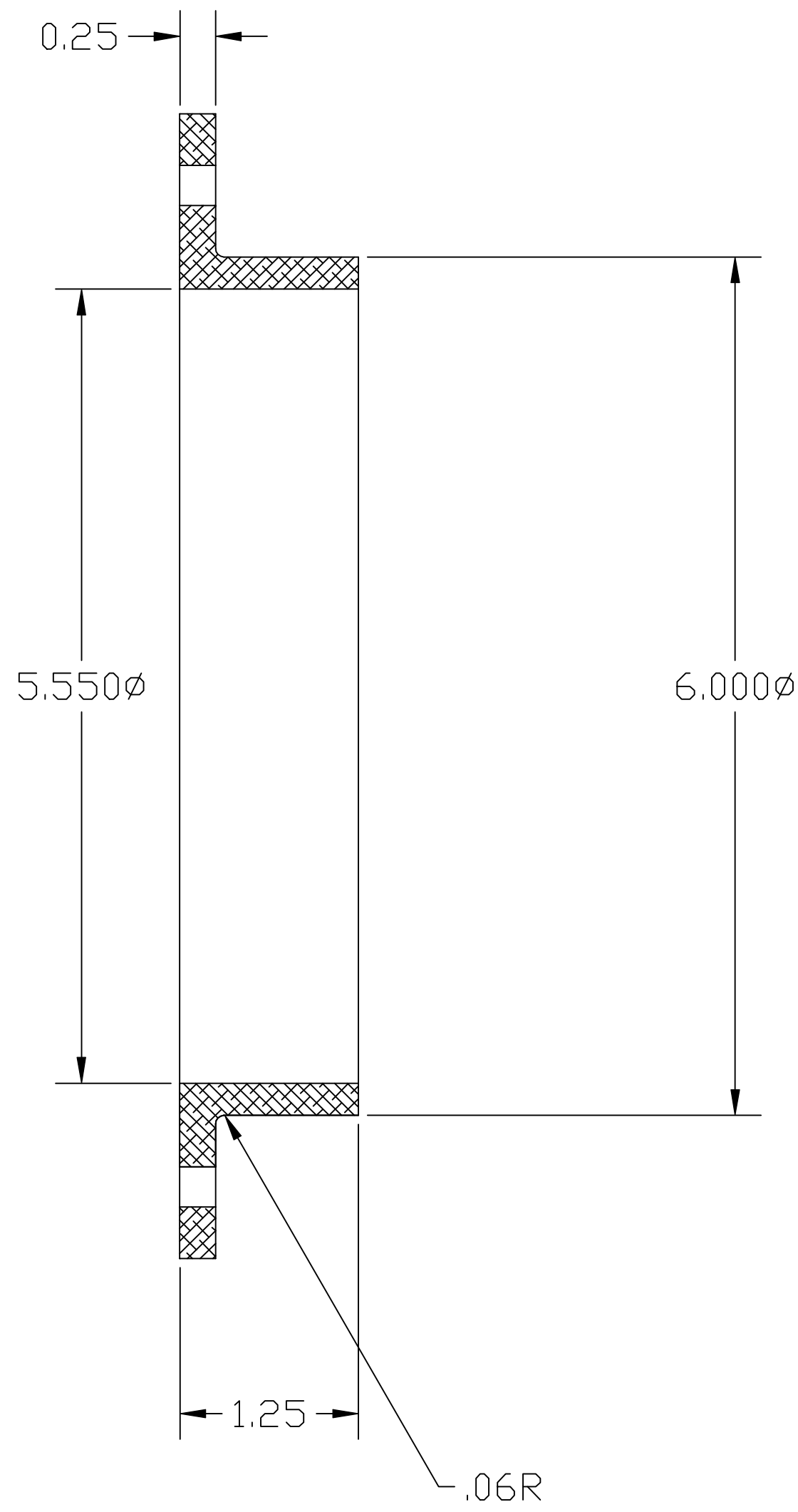
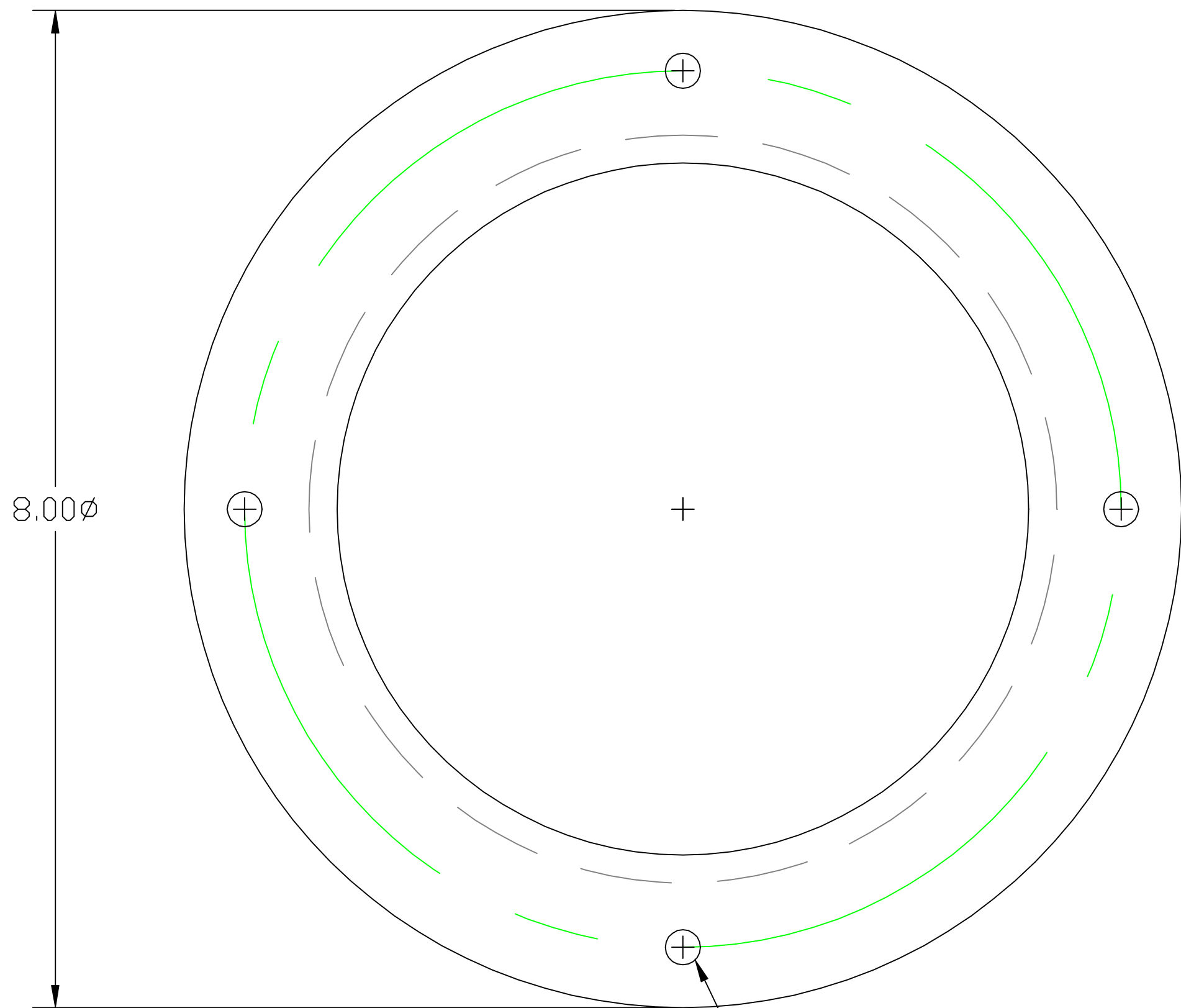


NOTES:
1. CLEAR ANODIZE PER MIL-A-8625

NOTES:



.281 ϕ THRU (4) HOLES EQ SP ON A
7.000 ϕ B.C.

REF	QTY	PART or DRWG No.	CDS										MATERIAL		
PARTS and MATERIAL LIST															
													MIT CALIFORNIA INSTITUTE OF TECHNOLOGY MASSACHUSETTS INSTITUTE OF TECHNOLOGY SEAL MOUNT- VIEWPORT OPTICAL LEVER ASSY SUPPORT STRUCTURE		
B		ADDED NOTE 1												MASON	9/98
A		INITIAL RELEASE												MASON	5/98
00		PRE-RELEASE												MASON	6/97
REV		DESCRIPTION	DCC	SYS	DET	CDS	VE	CC	BT	CHECK	DRWN	DATE	SCALE FULL		
ISSUE DESCRIPTION													SHEET 1 of 1		

DWG. NO.	DESCRIPTION	MATERIAL	HEAT TREAT	FINISH
	REFERENCE DRAWINGS	6061-T6 ALUM.	-	SEE NOTE 1
		USED DN: D970190-00-D		NEXT ASS'Y: -

UNLESS OTHERWISE SPECIFIED
DIMENSIONS ARE IN FEET [cm]
TOLERANCES:
FRACTIONAL $\pm 1/16(.16)$ FINISHED SURFACE RMS 63
ANGULAR $\pm 1^\circ$ BREAK CORNERS: .02
TWO PLACE DECIMAL $\pm .01(.025)$ REMOVE ALL BURRS
THREE PLACE DECIMAL $\pm .005(.013)$