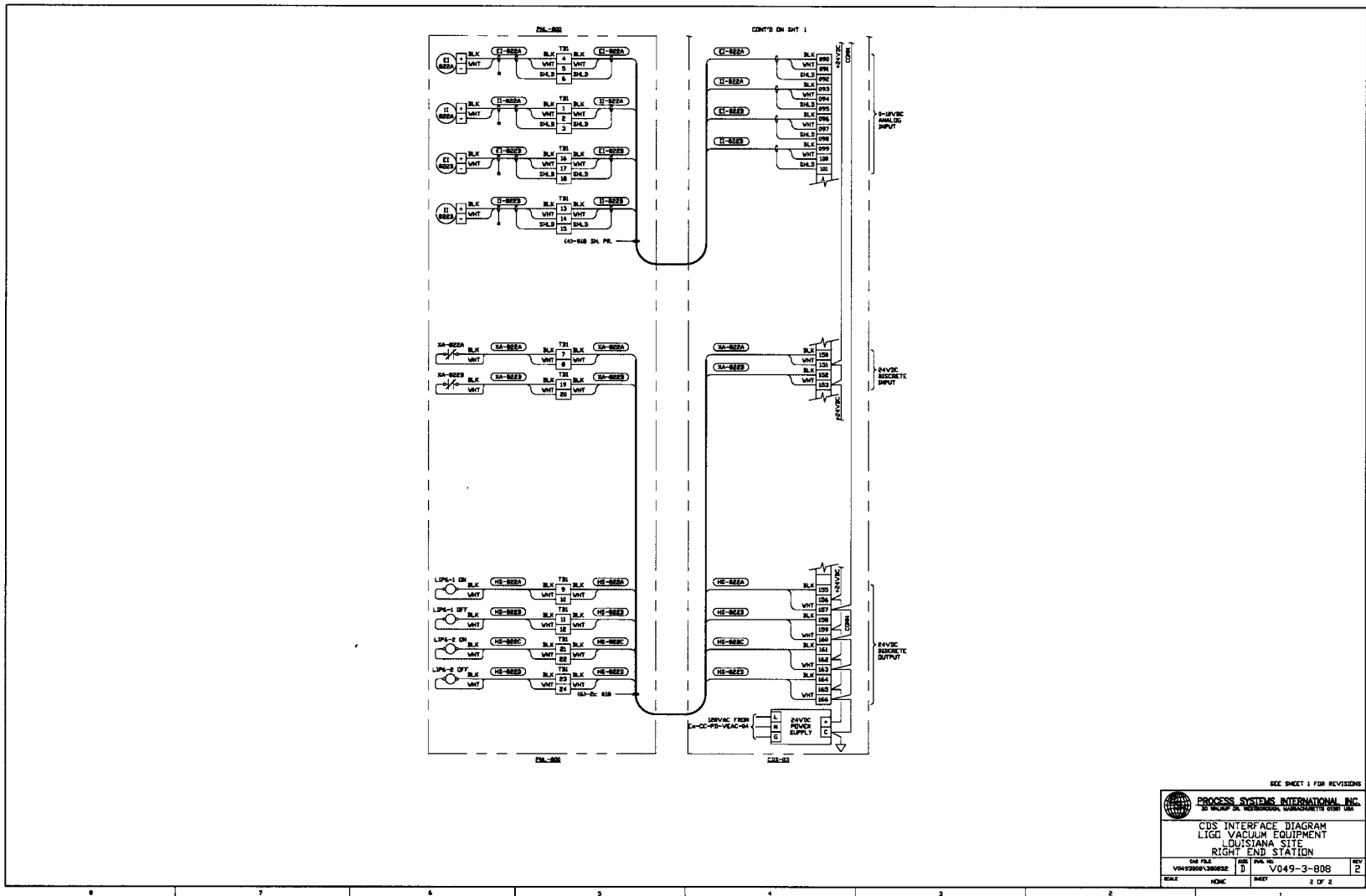


- NOTES:**
- 1) FOR P&ID, BNC LIST & LEGENDS SEE P&ID BNC 00000-3-000 SHIT 1
 - 2) FOR LIST OF CIVIL CONTRACTOR REFERENCE RANGE WITH CURRENT REVISIONS SEE P&ID BNC 00000-3-000 SHIT 2
 - 3) GOLF CATHODE POWER SWITCHING NOT BY P&ID
 - 4) LIMIT SWITCHES ON VALVES ARE SHOWN WHEN VALVE IS IN THE CLOSED POSITION

<p>PROBABLE AND CONFIRMED:</p> <p>THIS DOCUMENT CONTAINS PROPRIETARY INFORMATION BELONGING TO PROCESS SYSTEMS INTERNATIONAL, INC. OR ITS AFFILIATES. ANY DISCLOSURE OF THIS INFORMATION TO ANY OTHER PARTY WITHOUT THE WRITTEN PERMISSION OF PROCESS SYSTEMS INTERNATIONAL, INC. IS STRICTLY PROHIBITED. THIS DOCUMENT IS THE PROPERTY OF PROCESS SYSTEMS INTERNATIONAL, INC. AND IS TO BE KEPT IN CONFIDENTIALITY. IT IS TO BE DESTROYED OR RECYCLED UPON THE EXPIRATION OF THE CONFIDENTIALITY PERIOD. ANY REPRODUCTION OR TRANSMISSION OF THIS DOCUMENT WITHOUT THE WRITTEN PERMISSION OF PROCESS SYSTEMS INTERNATIONAL, INC. IS STRICTLY PROHIBITED.</p>		<p>ISSUES FOR CONSTRUCTION:</p> <p>ISSUES ARE IN BOLD</p> <p>1 ISSUE FOR CONSTRUCTION</p>		<p>ISSUES FOR LA DESIGN REVIEW:</p> <p>ISSUES ARE IN BOLD</p> <p>0 ISSUE FOR LA DESIGN REVIEW</p>		<p>ISSUES FOR AS-BUILT:</p> <p>ISSUES ARE IN BOLD</p> <p>2 ISSUE FOR AS-BUILT</p>		<p>PROCESS SYSTEMS INTERNATIONAL, INC.</p> <p>6000 W. BRIDGEWAY, SUITE 100 HOUSTON, TEXAS 77056-1300 TEL: 281-291-1000 FAX: 281-291-1001 WWW: WWW.PSI-CORP.COM</p>	
<p>DO NOT SCALE THIS DRAWING</p> <p>USED ON</p> <p>REV</p> <p>NEXT ASS'Y</p>	<p>DESCRIPTION</p> <p>REV</p>	<p>DESCRIPTION</p> <p>REV</p>	<p>DESCRIPTION</p> <p>REV</p>	<p>REV</p> <p>CHKD</p> <p>DRWN</p> <p>DATE</p> <p>DESN</p>	<p>REV</p> <p>CHKD</p> <p>DRWN</p> <p>DATE</p> <p>DESN</p>	<p>REV</p> <p>CHKD</p> <p>DRWN</p> <p>DATE</p> <p>DESN</p>	<p>REV</p> <p>CHKD</p> <p>DRWN</p> <p>DATE</p> <p>DESN</p>	<p>REV</p> <p>CHKD</p> <p>DRWN</p> <p>DATE</p> <p>DESN</p>	<p>REV</p> <p>CHKD</p> <p>DRWN</p> <p>DATE</p> <p>DESN</p>



SEE SHEET 1 FOR REVISIONS

PROCESS SYSTEMS INTERNATIONAL, INC. <small>9500 W. 13th Street, Houston, Texas 77033</small>			
CDS INTERFACE DIAGRAM LIGO VACUUM EQUIPMENT LOUISIANA SITE RIGHT END STATION			
<small>DATE FILED</small> VM72804L30002E	<small>REV.</small> D	<small>APP. NO.</small> V049-3-808	<small>REV.</small> Z
<small>SCALE</small> NONE	<small>SHEET</small> 2 OF 2		