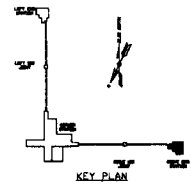
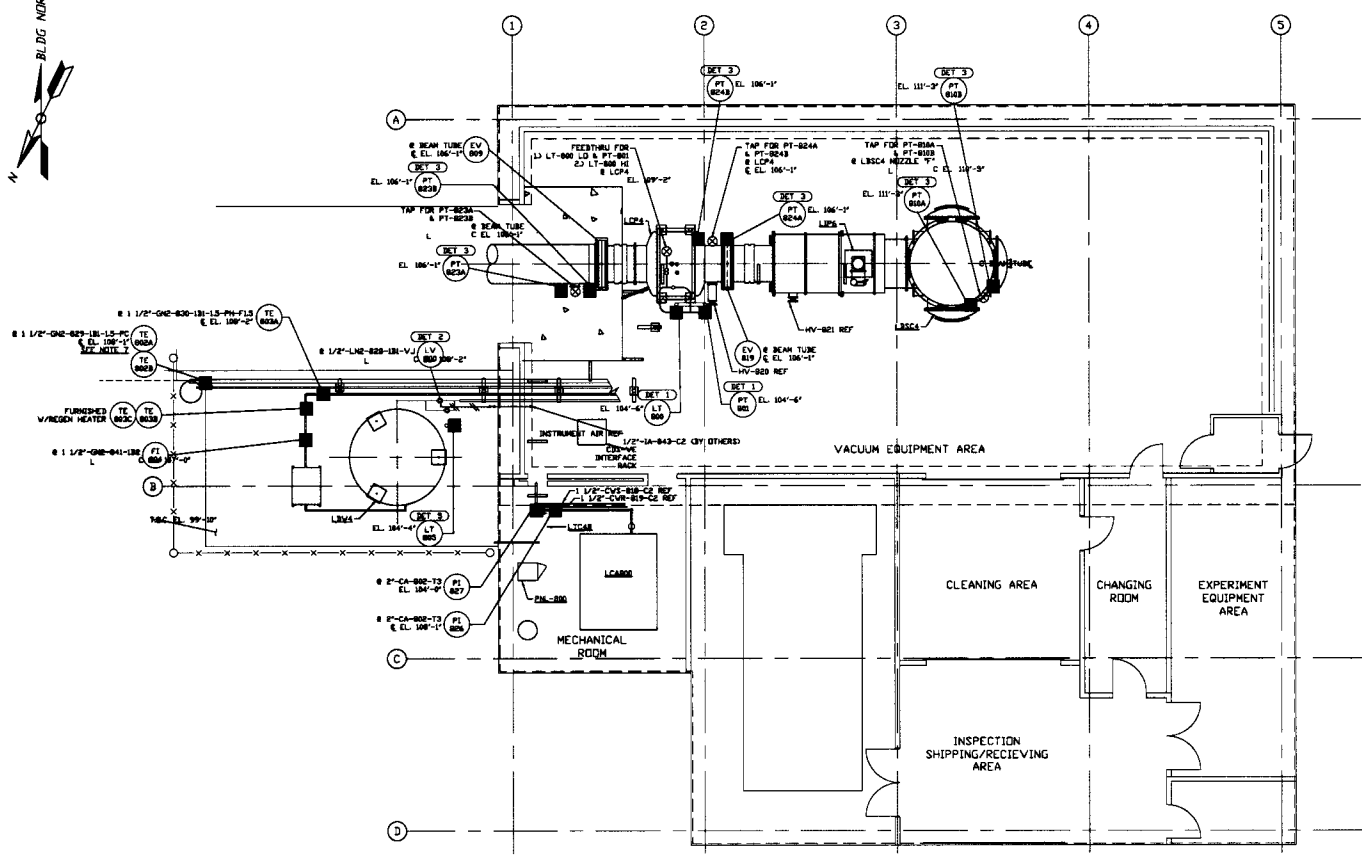




- NOTES:**
- 1) FOR GENERAL NOTES & LEGEND SEE P&ID DWG. P049-3-000 SHEET 1.
 - 2) FOR LIST OF CIVIL CONTRACTOR REFERENCE DWGS. WITH CURRENT REVISIONS SEE P&ID DWG. P049-3-005 SHEET 2.
 - 3) FOR INSTRUMENT INSTALLATION DETAILS SEE P&ID DWG. P049-3-006.
 - 4) ALL PROCESS TUBING SHALL BE 3/8" O.D. x .005 THK. SEAMLESS ST316L TYPE 304.
 - 5) TURNING POINTS SHOWN ON PLAN IS DIAGRAMMATIC AND SHALL BE FIELD VERIFIED SO AS TO OPTIMIZE SUPPORTING HEADS AND TO AVOID INTERFERENCE WITH CONDUIT & PIPING SYSTEMS.
 - 6) ALL INSTRUMENT AIR TUBING SHALL BE 1/4" TYPE L OR LARGER COPPER WITH BRASS COMPRESSION CONNECTORS.
 - 7) DUAL THERMOCOUPLE TC-000A/B SHALL BE LOCATED WITHIN 6 INCHES OF THE CHECK VALVE HEAT TAP.



RIGHT END STATION PLAN @ EL. 100'-0"

INSTRUMENT AND CONNECTIONS THIS DRAWING CONTAINS PROPRIETARY INFORMATION. IT IS TO BE USED ONLY FOR THE PURPOSES FOR WHICH IT WAS ISSUED. IT SHALL NOT BE REPRODUCED OR TRANSMITTED IN ANY FORM OR BY ANY MEANS, ELECTRONIC OR MECHANICAL, INCLUDING PHOTOCOPYING, RECORDING, OR BY ANY INFORMATION STORAGE AND RETRIEVAL SYSTEM, WITHOUT THE WRITTEN PERMISSION OF PROCESS SYSTEMS INTERNATIONAL, INC. THIS DRAWING IS THE PROPERTY OF PROCESS SYSTEMS INTERNATIONAL, INC. AND WILL BE RETURNED UPON REQUEST.		V049-3-043 PIPING PLAN LOUISIANA RIGHT END STATION V049-3-048 EQUIP. ARRANGEMENT LOUISIANA RIGHT END STATION V049-3-049 INSTRUMENT INSTALLATION DETAILS V049-3-050 GENERAL NOTES & LEGEND V049-3-053 LOUISIANA OVERALL SITE PLAN V049-3-055 P & I D LOUISIANA RIGHT END STATION DWG. NO. DESCRIPTION DWG. NO. DESCRIPTION		UNLESS OTHERWISE SPECIFIED DIMENSIONS ARE IN INCHES TOLERANCES FRACTIONS DECIMALS FINISHES 1/8" THICK PLATE SECTION, F AND FENDING SURFACE ARE SHOWN UNLESS OTHERWISE SPECIFIED DO NOT SCALE THIS DRAWING USED DIM. NEXT ASS'Y.		<table border="1"> <tr> <th>REV</th> <th>DESCRIPTION</th> <th>ISSUE DESCRIPTION</th> </tr> <tr> <td>2</td> <td>ISSUE FOR AS-BUILT</td> <td>LD 02.08.99 0644</td> </tr> <tr> <td>1</td> <td>ISSUE FOR CONSTRUCTION</td> <td>FAB R/JV 04.06.98 0604</td> </tr> <tr> <td>0</td> <td>ISSUE FOR LA DESIGN REVIEW</td> <td>REB DRVH 02.24.97 0430</td> </tr> </table>		REV	DESCRIPTION	ISSUE DESCRIPTION	2	ISSUE FOR AS-BUILT	LD 02.08.99 0644	1	ISSUE FOR CONSTRUCTION	FAB R/JV 04.06.98 0604	0	ISSUE FOR LA DESIGN REVIEW	REB DRVH 02.24.97 0430	<table border="1"> <tr> <th>REV</th> <th>DESCRIPTION</th> <th>ISSUE DESCRIPTION</th> </tr> <tr> <td>2</td> <td></td> <td></td> </tr> </table>		REV	DESCRIPTION	ISSUE DESCRIPTION	2			<table border="1"> <tr> <th>REV</th> <th>DESCRIPTION</th> <th>ISSUE DESCRIPTION</th> </tr> <tr> <td>2</td> <td></td> <td></td> </tr> </table>		REV	DESCRIPTION	ISSUE DESCRIPTION	2			<table border="1"> <tr> <th>REV</th> <th>DESCRIPTION</th> <th>ISSUE DESCRIPTION</th> </tr> <tr> <td>2</td> <td></td> <td></td> </tr> </table>		REV	DESCRIPTION	ISSUE DESCRIPTION	2			<table border="1"> <tr> <th>REV</th> <th>DESCRIPTION</th> <th>ISSUE DESCRIPTION</th> </tr> <tr> <td>2</td> <td></td> <td></td> </tr> </table>		REV	DESCRIPTION	ISSUE DESCRIPTION	2		
REV	DESCRIPTION	ISSUE DESCRIPTION																																																	
2	ISSUE FOR AS-BUILT	LD 02.08.99 0644																																																	
1	ISSUE FOR CONSTRUCTION	FAB R/JV 04.06.98 0604																																																	
0	ISSUE FOR LA DESIGN REVIEW	REB DRVH 02.24.97 0430																																																	
REV	DESCRIPTION	ISSUE DESCRIPTION																																																	
2																																																			
REV	DESCRIPTION	ISSUE DESCRIPTION																																																	
2																																																			
REV	DESCRIPTION	ISSUE DESCRIPTION																																																	
2																																																			
REV	DESCRIPTION	ISSUE DESCRIPTION																																																	
2																																																			
INSTRUMENT PLAN LOUISIANA SITE RIGHT END STATION DWG. NO. V049-3-801 SHEET 1 OF 1		PROCESS SYSTEMS INTERNATIONAL, INC. 20 WILSON DR. WESTBOROUGH, MASSACHUSETTS 01581 USA		SCALE: 3/16" = 1' - 0" DATE: 02/24/97		SHEET 1 OF 1																																													

LIGO-D970145-02-V

EDUCATION VERSION - NOT FOR COMMERCIAL USE