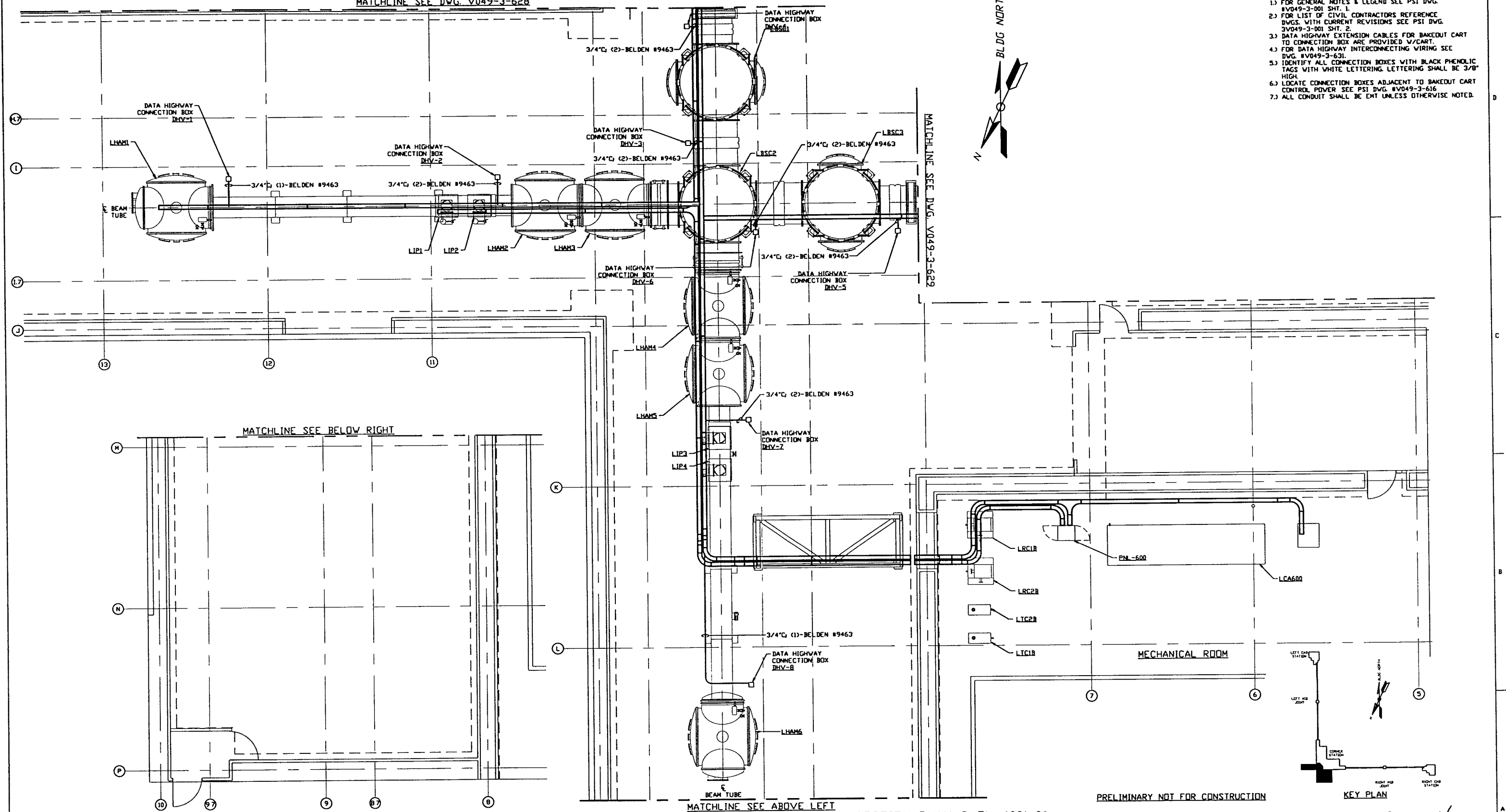


MATCHLINE SEE DWG. V049-3-628



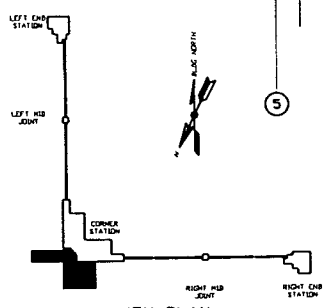
NOTES:

- 1.) FOR GENERAL NOTES & LEGEND SEE PSI DWG. #V049-3-001 SHT. 1.
- 2.) FOR LIST OF CIVIL CONTRACTORS REFERENCE DWGS. WITH CURRENT REVISIONS SEE PSI DWG. #V049-3-001 SHT. 2.
- 3.) DATA HIGHWAY EXTENSION CABLES FOR BAKEDUT CART TO CONNECTION BOX ARE PROVIDED V/CART.
- 4.) FOR DATA HIGHWAY INTERCONNECTING WIRING SEE DWG. #V049-3-631.
- 5.) IDENTIFY ALL CONNECTION BOXES WITH BLACK PHENOLIC TAGS WITH WHITE LETTERING. LETTERING SHALL BE 3/8" HIGH.
- 6.) LOCATE CONNECTION BOXES ADJACENT TO BAKEDUT CART CONTROL POWER SEE PSI DWG. #V049-3-616.
- 7.) ALL CONDUIT SHALL BE EMT UNLESS OTHERWISE NOTED.



VERTEX SECTION PLAN @ EL. 100'-0"

PRELIMINARY NOT FOR CONSTRUCTION



KEY PLAN

LIGO-D970130-00-V

PROPRIETARY AND CONFIDENTIAL																						
THIS DOCUMENT CONTAINS PROPRIETARY INFORMATION BELONGING TO PROCESS SYSTEMS INTERNATIONAL, INC. OR ITS SUBSIDIARIES AND SHALL BE KEPT CONFIDENTIAL FOR THE PURPOSE FOR WHICH IT WAS SUPPLIED. IT SHALL NOT BE COPIED, REPRODUCED OR OTHERWISE USED, NOR SHALL SUCH INFORMATION BE FURNISHED IN WHOLE OR IN PART TO OTHERS EXCEPT IN ACCORDANCE WITH THE TERMS OF ANY AGREEMENT UNDER WHICH IT WAS SUPPLIED OR WITH THE PRIOR WRITTEN CONSENT OF PROCESS SYSTEMS INTERNATIONAL, INC. AND SHALL BE RETURNED UPON REQUEST.		V049-3-631	DATA HIGHWAY INTERCONNECTION DIAGRAM LOUISIANA																			
	V049-3-616	POWER PLAN LOUISIANA VERTEX SECTION																				
	V049-3-606	CABLE TRAY PLAN LOUISIANA VERTEX SECTION																				
	V049-3-003	LOUISIANA OVERALL SITE PLAN																				
	V049-3-001	GENERAL NOTES & LEGEND																				
DWG. NO.	DESCRIPTION	DWG. NO.	DESCRIPTION	UNLESS OTHERWISE SPECIFIED DIMENSIONS ARE IN INCHES		TOLERANCES:		FRACTIONAL		ANGULAR		HOLE		HOLE		HOLE		HOLE		HOLE		
				DO NOT SCALE THIS DRAWING		0		ISSUE FOR LA DESIGN REVIEW		RES/DW		AJM		02.24.97		0430		CAB FILE		D		
				USED ON:		REV		DESCRIPTION		CHKD		BRWN		DATE		DCDR		SCALE		D		
				NEXT ASSY:				ISSUE DESCRIPTION										3/16" = 1' - 0"		1 OF 1		

PROCESS SYSTEMS INTERNATIONAL, INC.
20 WALKUP DR. WESTBOROUGH, MASSACHUSETTS 01581 USA

DATA HIGHWAY PLAN
LIGO VACUUM EQUIPMENT
LOUISIANA SITE
VERTEX SECTION

CAB FILE: V0493627
DWG. NO.: V049-3-627
SCALE: 3/16" = 1' - 0"
SHEET: 1 OF 1