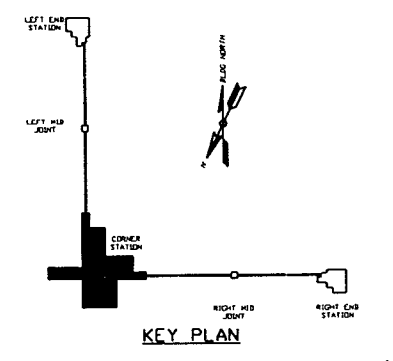
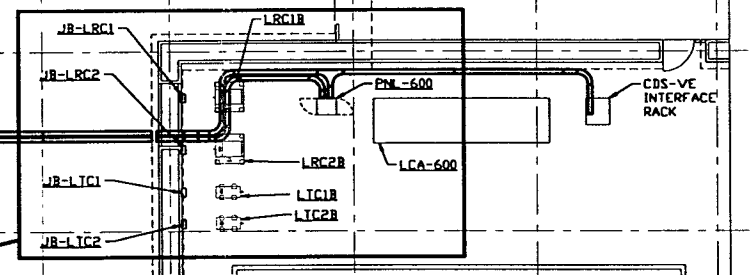
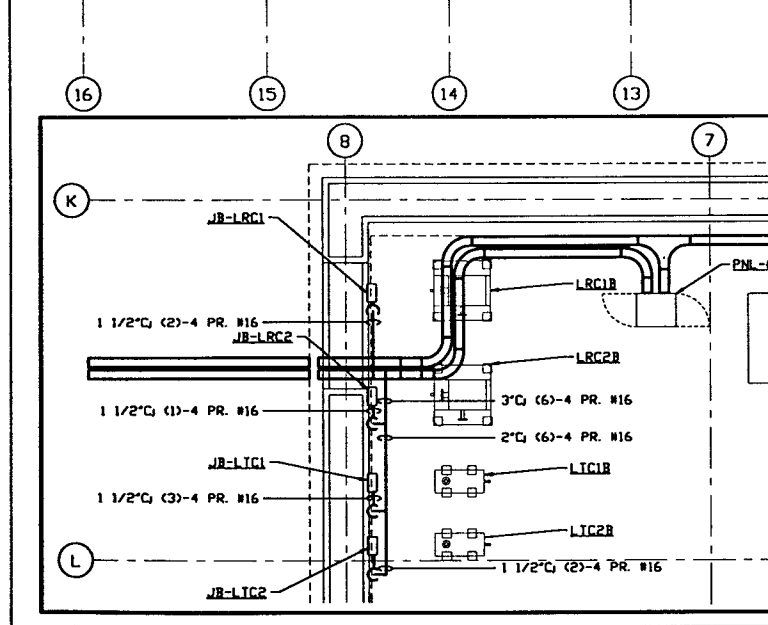
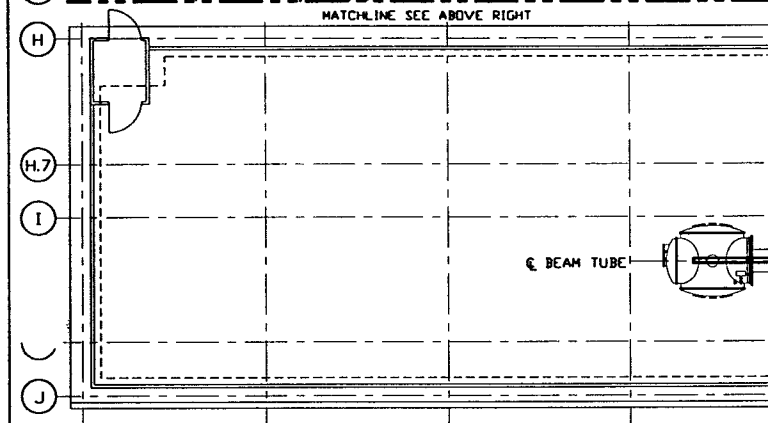
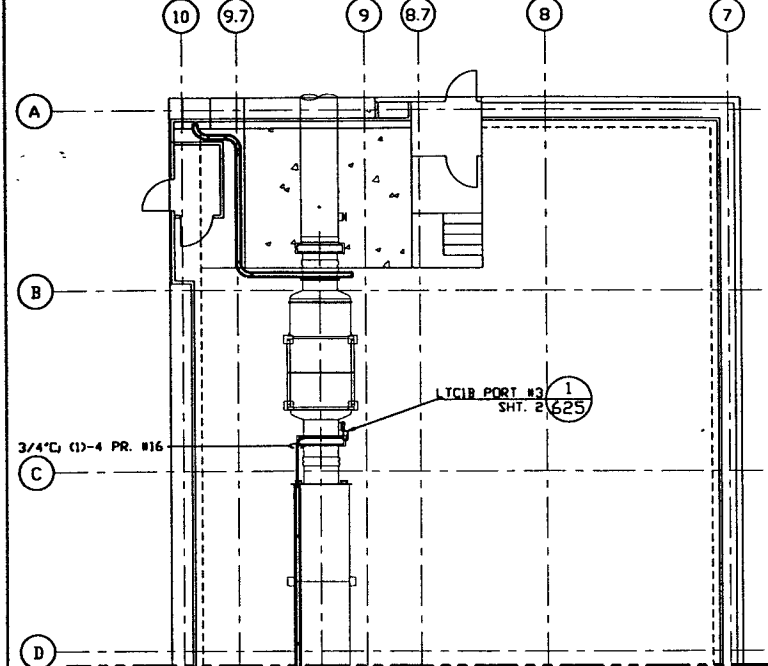
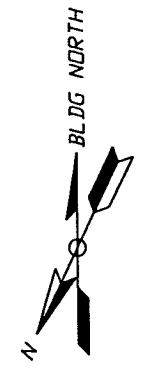


- NOTES:**
- 1.) FOR GENERAL NOTES & LEGEND SEE PSI DWG. #V049-3-001 SHT. 1.
 - 2.) FOR LIST OF CIVIL CONTRACTOR REFERENCE DWGS. WITH CURRENT REVISIONS SEE PSI DWG. #V049-3-001 SHT. 2.
 - 3.) CONDUIT IS SHOWN DIAGRAMMATICALLY AND SHALL BE FIELD VERIFIED SO AS TO OPTIMIZE SUPPORTING MEANS AND TO AVOID INTERFERENCES WITH PIPING SYSTEMS.
 - 4.) IDENTIFY ALL CONNECTION BOXES WITH BLACK PHENOLIC TAGS WITH WHITE LETTERING. LETTERING SHALL BE 3/8" HIGH.
 - 5.) ALL CONDUIT SHALL BE ENT UNLESS OTHERWISE NOTED.



PRELIMINARY NOT FOR CONSTRUCTION

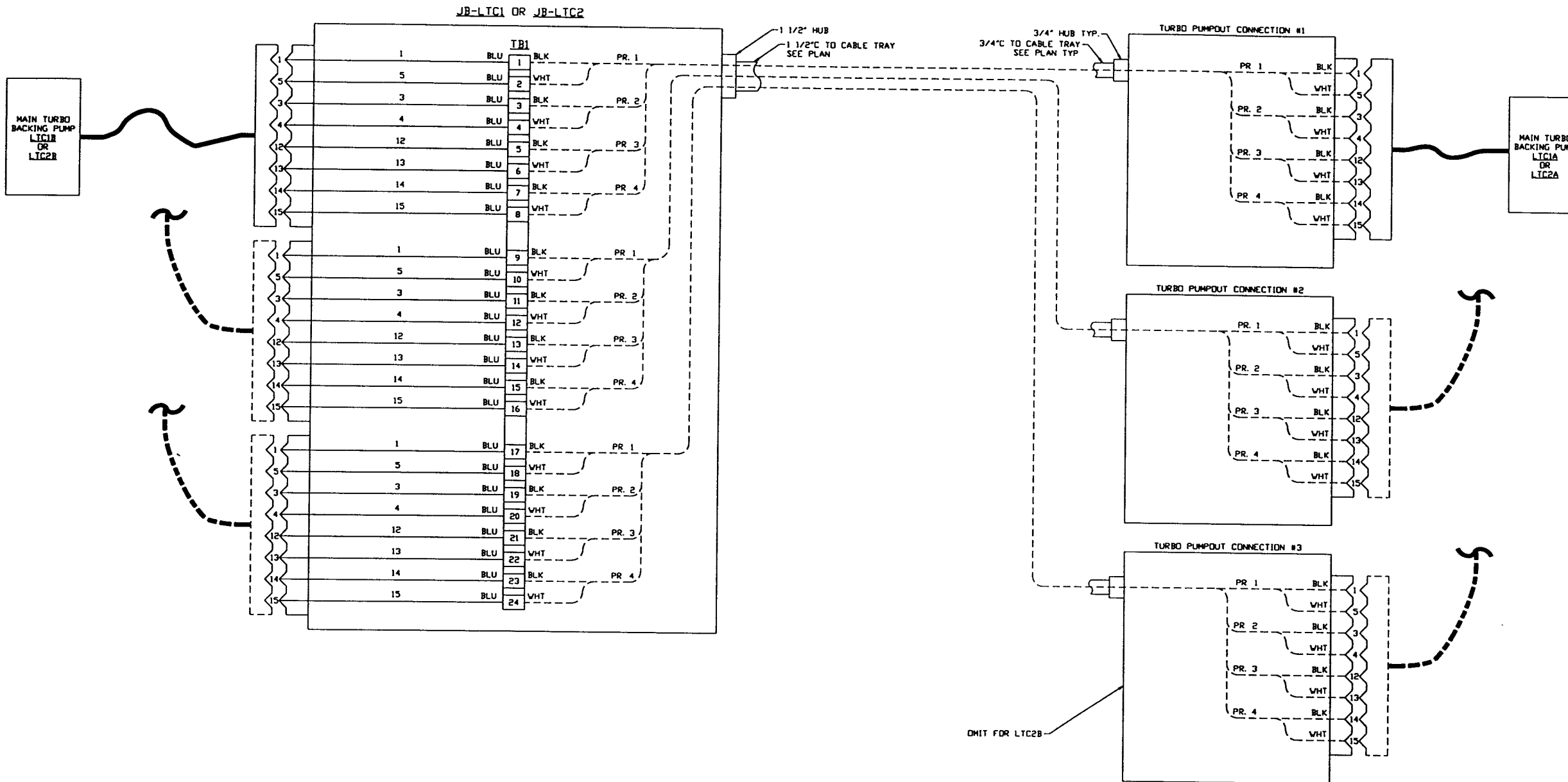
LIGO-D970129-00-V

<p>PROPRIETARY AND CONFIDENTIAL</p> <p>THIS DOCUMENT CONTAINS PROPRIETARY INFORMATION BELONGING TO PROCESS SYSTEMS INTERNATIONAL, INC. OR ITS SUBSIDIARIES AND SHALL BE KEPT CONFIDENTIAL FOR THE PURPOSES FOR WHICH IT WAS SUPPLIED. IT SHALL NOT BE REPRODUCED OR OTHERWISE DISCLOSED IN ANY MANNER WITHOUT THE WRITTEN CONSENT OF PROCESS SYSTEMS INTERNATIONAL, INC. AND SHALL BE RETURNED UPON REQUEST.</p>			<p>UNLESS OTHERWISE SPECIFIED DIMENSIONS ARE IN INCHES</p> <p>TOLERANCES: FRACTIONAL & DECIMAL: ± 0.031" ANGULAR: ± 0.5° HOLE: ± 0.005" SURFACE: ± 0.005" FINISHED SURFACE: ± 0.005" BREAK CORNERS: IN ACCORDANCE WITH ASME Y14.5</p>			<p>DO NOT SCALE THIS DRAWING</p>			<p>0 ISSUE FOR LA DESIGN REVIEW</p>			<p>02.24.97 04.30</p>			<p>SCALE 1" = 10'-0"</p>		
<p>USED ON</p>			<p>REV</p>			<p>DESCRIPTION</p>			<p>DATE</p>			<p>DECIB</p>					
<p>NEXT ASS'Y.</p>			<p>ISSUE DESCRIPTION</p>			<p>DATE</p>			<p>DECIB</p>			<p>SHEET 1 OF 3</p>					
<p>REFERENCE DRAWINGS</p>			<p>DESCRIPTION</p>			<p>DATE</p>			<p>DECIB</p>			<p>SHEET 1 OF 3</p>					

PROCESS SYSTEMS INTERNATIONAL, INC.
 20 WALKUP DR. WESTBOROUGH, MASSACHUSETTS 01581 USA

VACUUM CARTS INTERFACE PLAN
LIGO VACUUM EQUIPMENT
LOUISIANA SITE
CORNER STATION

CAR FILE: V0493625362551
 SIZE: D
 DWG. NO.: V049-3-625
 REV: 0



MAIN TURBO CART INTERFACE WIRING DIAGRAM

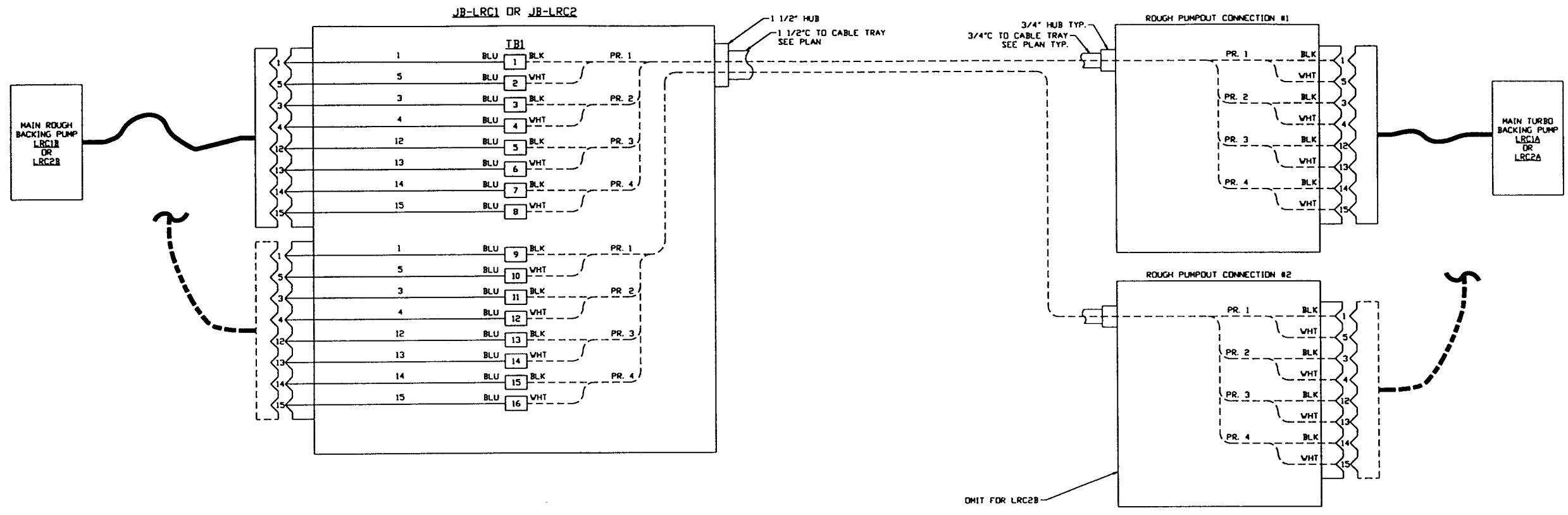
DETAIL 1 REF.
SCALE: NONE --- V049-3-625

PRELIMINARY NOT FOR CONSTRUCTION

SEE SHEET 1 FOR REVISIONS

PROCESS SYSTEMS INTERNATIONAL INC. 20 WALKUP DR. WESTBOROUGH, MASSACHUSETTS 01581 USA			
VACUUM CARTS INTERFACE PLAN LIGO VACUUM EQUIPMENT LOUISIANA SITE CORNER STATION			
CAD FILE V0493625\3625S2	SIZE D	PLG. NO. V049-3-625	REV. 0
SCALE AS NOTED	SHEET 2 OF 3		

LIGO-D970129-00-V



MAIN MAINING CART INTERFACE WIRING DIAGRAM

DETAIL 2 REF.
SCALE: NONE --- V049-3-625

PRELIMINARY NOT FOR CONSTRUCTION

SEE SHEET 1 FOR REVISIONS

PROCESS SYSTEMS INTERNATIONAL, INC.
20 WALRUP DR. WESTBOROUGH, MASSACHUSETTS 01581 USA

VACUUM CARTS INTERFACE PLAN
LIGO VACUUM EQUIPMENT
LOUISIANA SITE
CORNER STATION

CAD FILE V0493625\3625S3	SIZE D	PLG. NO. V049-3-625	REV. 0
SCALE AS NOTED	SHEET 3 OF 3		

LIGO-D970129-00-V