

PRELIMINARY NOT FOR CONSTRUCTION

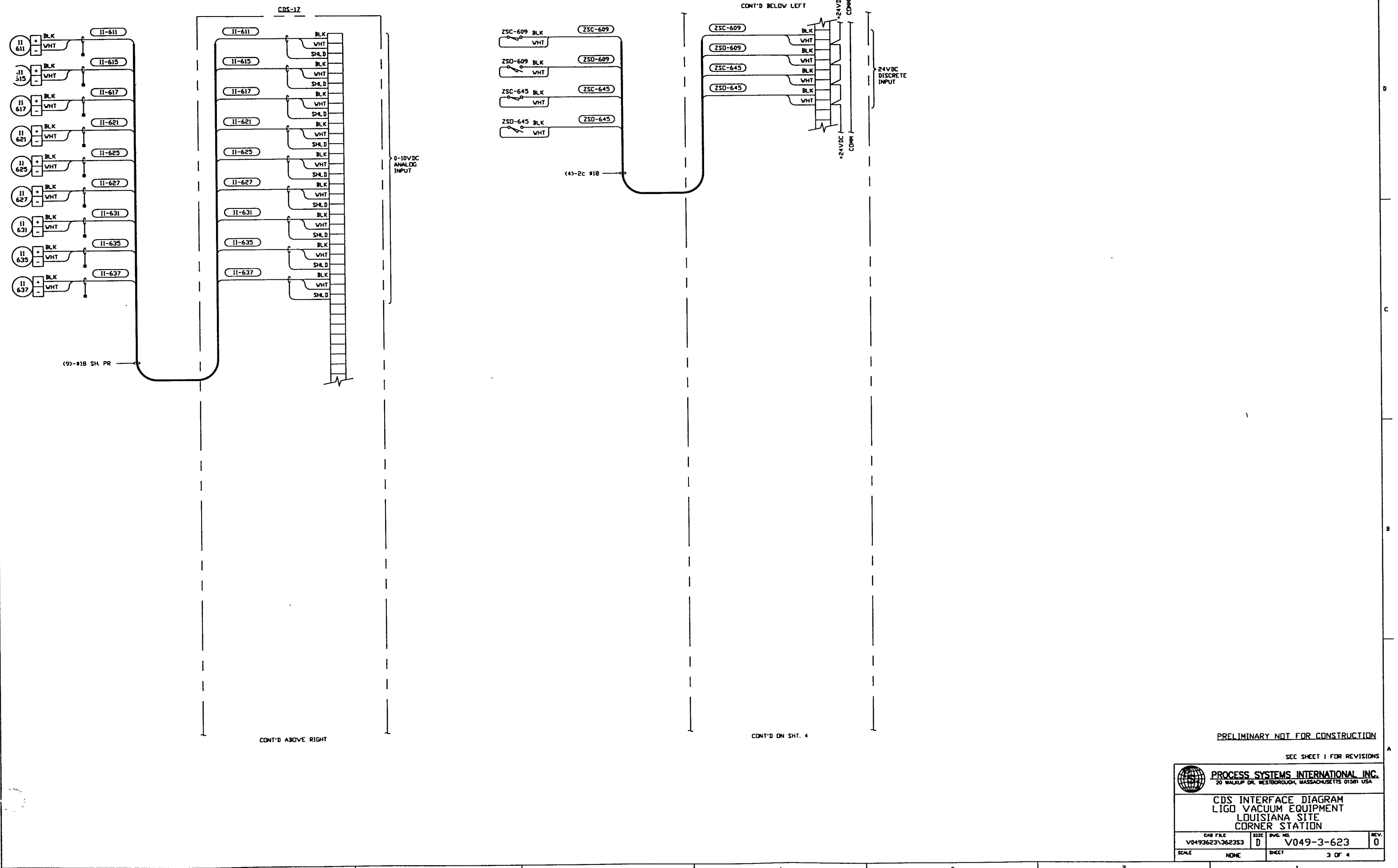
SEE SHEET 1 FOR REVISIONS

**PROCESS SYSTEMS INTERNATIONAL INC.**  
 20 WALKUP DR. WESTBOROUGH, MASSACHUSETTS 01581 USA

**CDS INTERFACE DIAGRAM**  
 LIGO VACUUM EQUIPMENT  
 LOUISIANA SITE  
 CORNER STATION


CAD FILE	SIZE	REV. NO.	REV.
V0493623\3623S2	D	V049-3-623	0
SCALE	NONE	SHEET	2 OF 4

LIGO-D970127-00-V

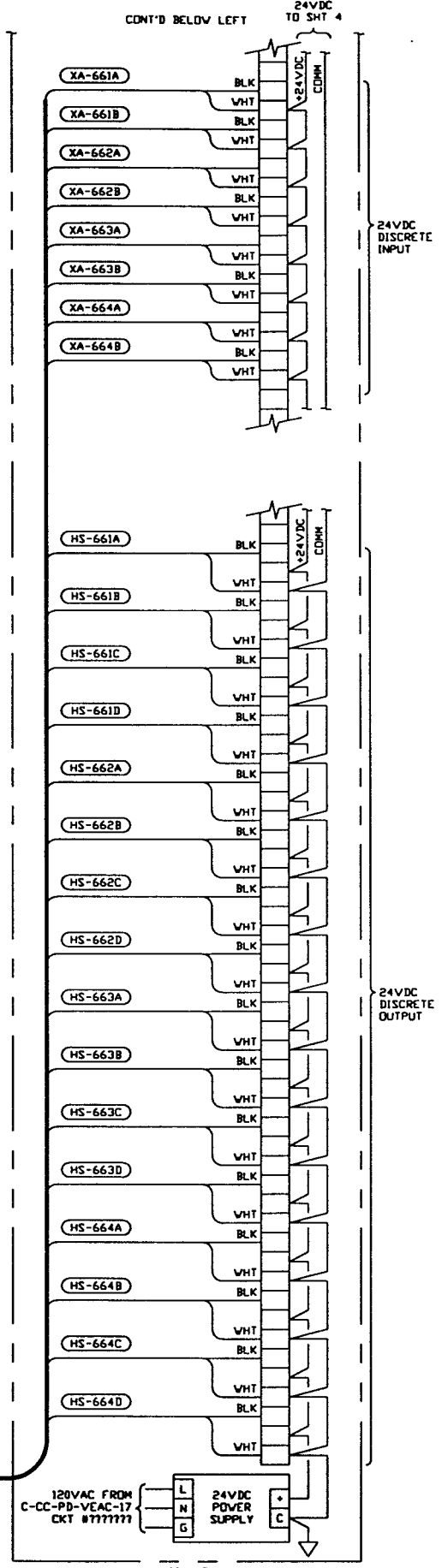
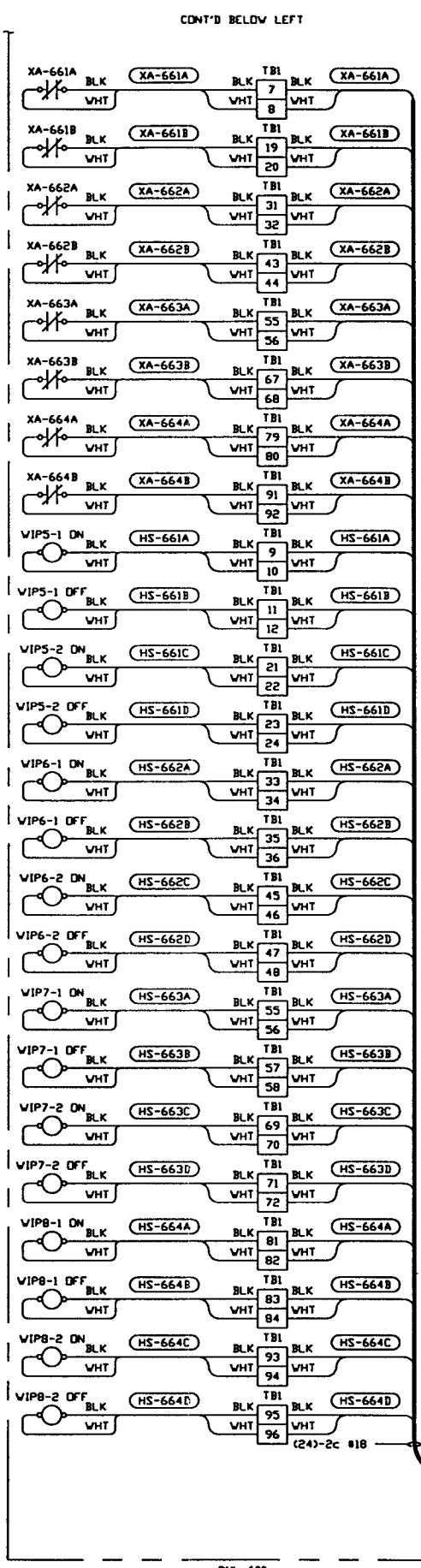
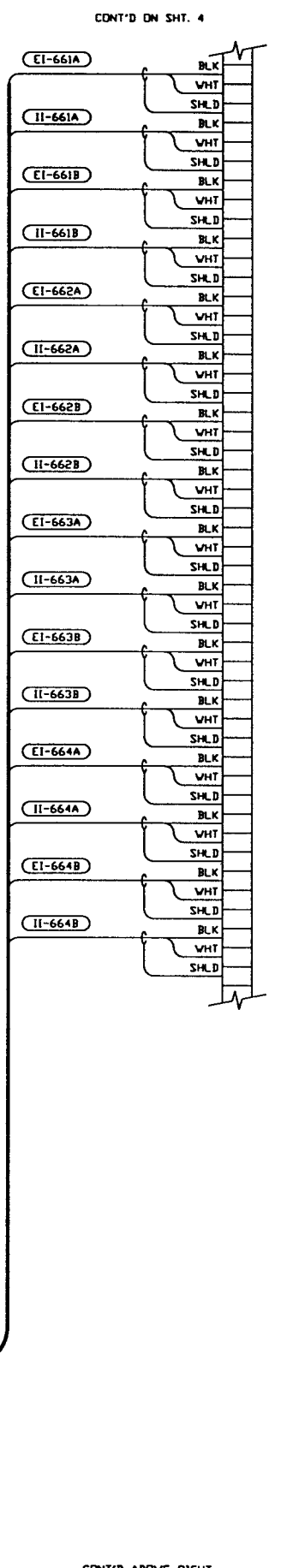
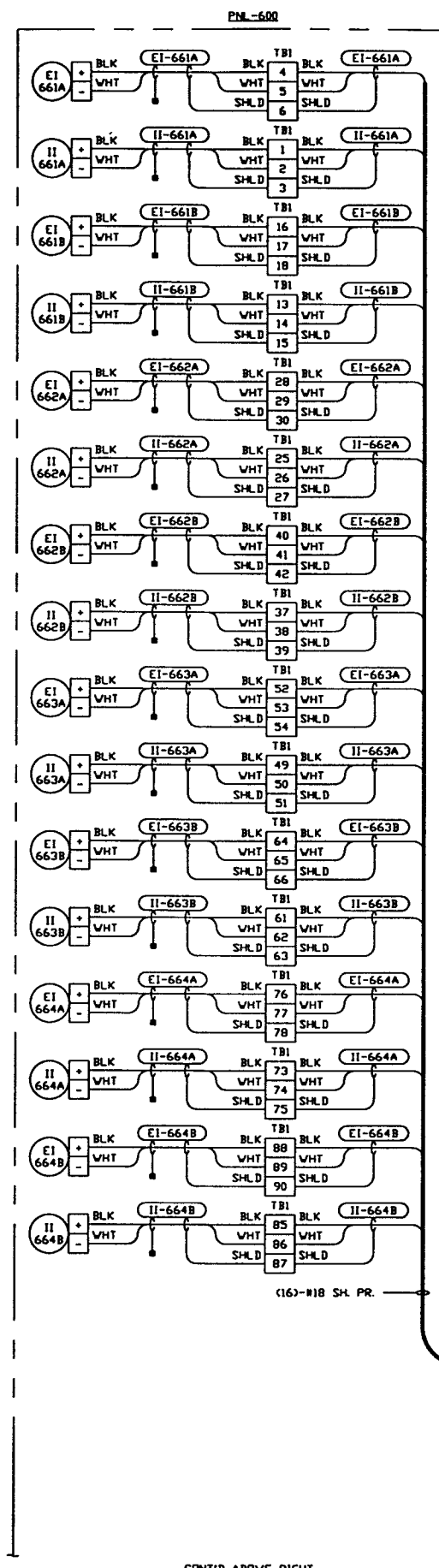


PRELIMINARY NOT FOR CONSTRUCTION

SEE SHEET 1 FOR REVISIONS

 <b>PROCESS SYSTEMS INTERNATIONAL INC.</b> 20 WALKUP DR. WESTBOROUGH, MASSACHUSETTS 01581 USA			
<b>CDS INTERFACE DIAGRAM</b> <b>LIGO VACUUM EQUIPMENT</b> <b>LOUISIANA SITE</b> <b>CORNER STATION</b>			
CAD FILE	SIZE	FIG. NO.	REV.
V0493623\3623S3	D	V049-3-623	0
SCALE	NONE	SHEET	3 OF 4

L190-0970127-00-V



PRELIMINARY NOT FOR CONSTRUCTION

SEE SHEET 1 FOR REVISIONS

PROCESS SYSTEMS INTERNATIONAL INC.  
20 WALRUP DR. WESTBOROUGH, MASSACHUSETTS 01581 USA

CDS INTERFACE DIAGRAM  
LIGO VACUUM EQUIPMENT  
LOUISIANA SITE  
CORNER STATION

CAD FILE	SIZE	DWG. NO.	REV.
VD493623\3623S4	D	V049-3-623	0
SCALE	NONE	SHEET	4 OF 4

LIGO-D970127-00-V