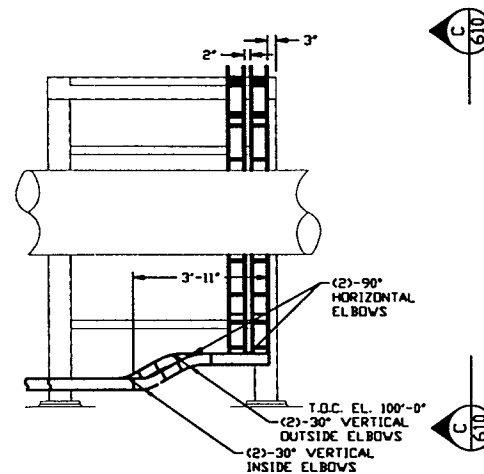
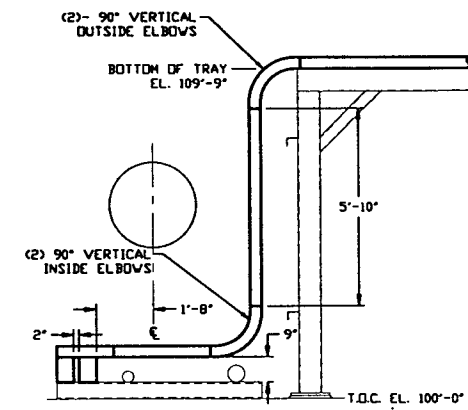


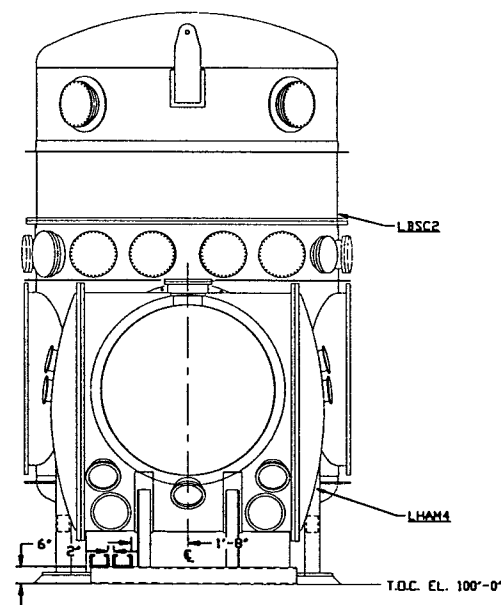
SECTION A REF.
SCALE: 3/8" = 1'-0" V049-3-606



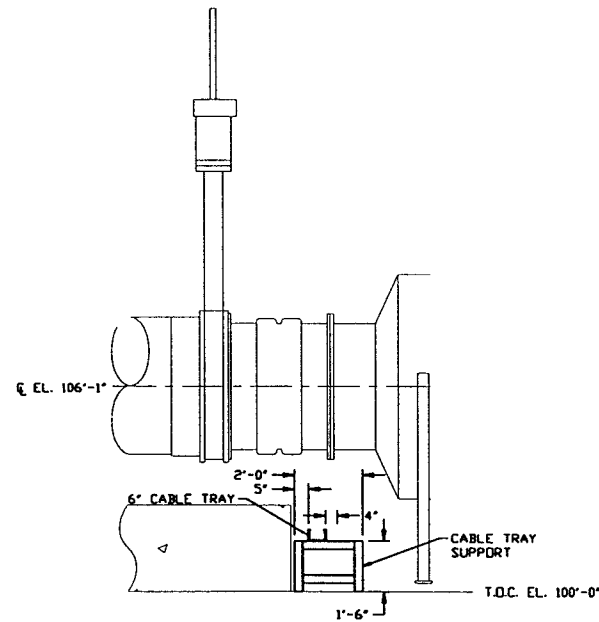
SECTION B REF.
SCALE: 3/8" = 1'-0" V049-3-606



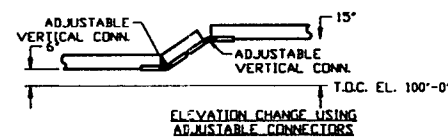
SECTION C REF.
SCALE: 3/8" = 1'-0" THIS SHIT.



SECTION D REF.
SCALE: 3/8" = 1'-0" V049-3-606



SECTION E REF.
SCALE: 3/8" = 1'-0" V049-3-607
V049-3-608



DETAIL 1 REF.
NO SCALE V049-3-606

PRELIMINARY NOT FOR CONSTRUCTION
LIGO-D970117-00-V

PROPRIETARY AND CONFIDENTIAL
THIS DOCUMENT CONTAINS PROPRIETARY INFORMATION BELONGING TO PROCESS SYSTEMS INTERNATIONAL, INC. OR ITS AFFILIATED COMPANIES AND SHALL BE KEPT SECRET FOR THE PURPOSE FOR WHICH IT WAS SUPPLIED. IT SHALL NOT BE REPRODUCED OR OTHERWISE USED, NOW OR LATER, WITHOUT THE WRITTEN CONSENT OF PROCESS SYSTEMS INTERNATIONAL, INC. AND SHALL BE RETURNED UPON REQUEST.

DWG. NO.	DESCRIPTION	DWG. NO.	DESCRIPTION

USED ON	REV	DESCRIPTION	CHKD	DRWN	DATE	DESN
DO NOT SCALE THIS DRAWING	0	ISSUE FOR LA DESIGN REVIEW			02.24.97	0430

PROCESS SYSTEMS INTERNATIONAL, INC.
20 WALKUP DR. WESTBOROUGH, MASSACHUSETTS 01581 USA

CABLE TRAY DETAILS
LIGO VACUUM EQUIPMENT
LOUISIANA SITE
CORNER STATION

CAB. P.R.E.	SIZE	DWG. NO.	REV.
V0493610	D	V049-3-610	0

SCALE: AS NOTED SHEET 1 OF 1