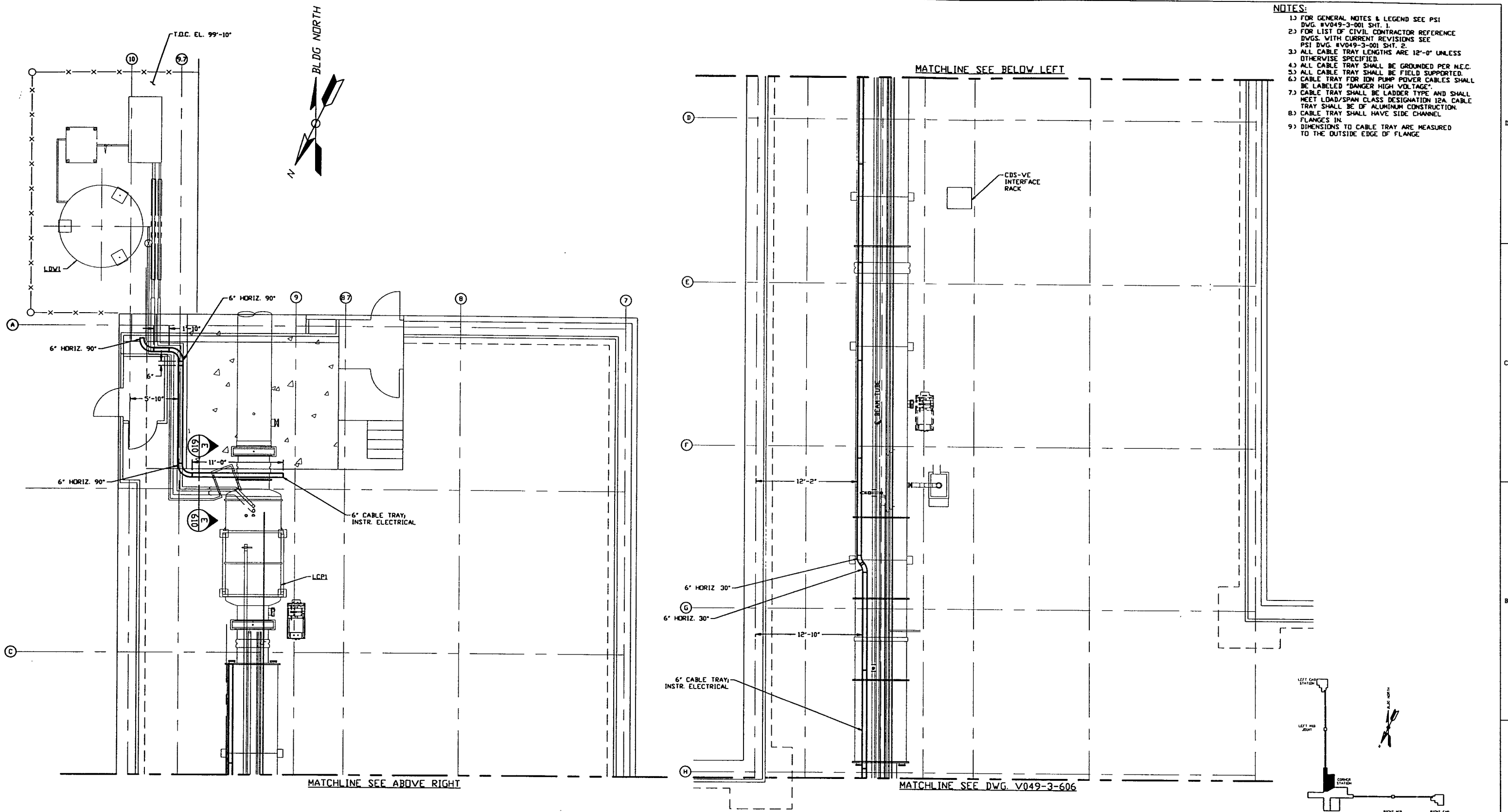


**NOTES:**

- 1) FOR GENERAL NOTES & LEGEND SEE PSI DWG. #V049-3-001 SHT. 1.
- 2) FOR LIST OF CIVIL CONTRACTOR REFERENCE DWGS. WITH CURRENT REVISIONS SEE PSI DWG. #V049-3-001 SHT. 2.
- 3) ALL CABLE TRAY LENGTHS ARE 12'-0" UNLESS OTHERWISE SPECIFIED.
- 4) ALL CABLE TRAY SHALL BE GROUNDED PER N.E.C.
- 5) ALL CABLE TRAY SHALL BE FIELD SUPPORTED.
- 6) CABLE TRAY FOR ION PUMP POWER CABLES SHALL BE LABELED "DANGER HIGH VOLTAGE".
- 7) CABLE TRAY SHALL BE LADDER TYPE AND SHALL MEET LOAD/SPAN CLASS DESIGNATION 12A. CABLE TRAY SHALL BE OF ALUMINUM CONSTRUCTION.
- 8) CABLE TRAY SHALL HAVE SIDE CHANNEL FLANGES IN.
- 9) DIMENSIONS TO CABLE TRAY ARE MEASURED TO THE OUTSIDE EDGE OF FLANGE.



LEFT BEAM MANIFOLD PLAN @ EL. 100'-0"

PRELIMINARY NOT FOR CONSTRUCTION

LIGO-D970115-00-V

<p>PROPRIETARY AND CONFIDENTIAL</p> <p>THIS DOCUMENT CONTAINS PROPRIETARY INFORMATION BELONGING TO PROCESS SYSTEMS INTERNATIONAL, INC. OR ITS COMPANIES AND SHALL BE KEPT SECRET FOR THE PURPOSE OF THE AGREEMENT UNDER WHICH IT WAS SUPPLIED. IT SHALL NOT BE COPIED, REPRODUCED OR OTHERWISE USED, NOR SHALL SUCH INFORMATION BE FURNISHED IN WHOLE OR IN PART TO OTHERS EXCEPT IN ACCORDANCE WITH THE WRITTEN CONSENT OF PROCESS SYSTEMS INTERNATIONAL, INC. AND SHALL BE RETURNED UPON REQUEST.</p>				<p>UNLESS OTHERWISE SPECIFIED DIMENSIONS ARE IN INCHES</p> <p>TOLERANCES:</p> <p>FRACTIONAL: ±</p> <p>ANGULAR: ±0.01° BOND ±0.02°</p> <p>TWO PLACE DECIMAL: ±0.01</p> <p>THREE PLACE DECIMAL: ±0.005</p> <p>FINISHED SURFACE: ±0.005</p> <p>BREAK CORNERS IN: OUT-</p> <p>REMOVE ALL BURRS</p>				<p>DO NOT SCALE THIS DRAWING</p> <p>USED ON: 0</p> <p>NEXT ASS'Y: 0</p>				<p>ISSUE FOR LA DESIGN REVIEW</p> <p>REV: 0</p> <p>ISSUE DESCRIPTION: 0</p>				<p>SCALE: 3/16" = 1' - 0"</p> <p>SHEET: 1 OF 1</p>																			
<p>REFERENCE DRAWINGS</p> <table border="1"> <thead> <tr> <th>DWG. NO.</th> <th>DESCRIPTION</th> <th>DWG. NO.</th> <th>DESCRIPTION</th> </tr> </thead> <tbody> <tr> <td>V049-3-610</td> <td>CABLE TRAY DETAILS CORNER STATION</td> <td></td> <td></td> </tr> <tr> <td>V049-3-606</td> <td>CABLE TRAY PLAN LOUISIANA VERTEX SECTION</td> <td></td> <td></td> </tr> <tr> <td>V049-3-003</td> <td>LOUISIANA OVERALL SITE PLAN</td> <td></td> <td></td> </tr> <tr> <td>V049-3-001</td> <td>GENERAL NOTES &amp; LEGEND</td> <td></td> <td></td> </tr> </tbody> </table>				DWG. NO.	DESCRIPTION	DWG. NO.	DESCRIPTION	V049-3-610	CABLE TRAY DETAILS CORNER STATION			V049-3-606	CABLE TRAY PLAN LOUISIANA VERTEX SECTION			V049-3-003	LOUISIANA OVERALL SITE PLAN			V049-3-001	GENERAL NOTES & LEGEND			<p>PROCESS SYSTEMS INTERNATIONAL, INC.</p> <p>20 WALKUP DR. WESTBOROUGH, MASSACHUSETTS 01581 USA</p> <p>CABLE TRAY PLAN</p> <p>LIGO VACUUM EQUIPMENT</p> <p>LOUISIANA SITE</p> <p>LEFT BEAM MANIFOLD</p>				<p>DATE: 02.24.97</p> <p>BY: [Signature]</p> <p>CHKD: [Signature]</p> <p>DRWN: [Signature]</p> <p>DATE: 04.30</p> <p>DECN: [Signature]</p>				<p>CAD FILE: V0493607</p> <p>SIZE: D</p> <p>DWG. NO.: V049-3-607</p> <p>REV.: 0</p>			
DWG. NO.	DESCRIPTION	DWG. NO.	DESCRIPTION																																
V049-3-610	CABLE TRAY DETAILS CORNER STATION																																		
V049-3-606	CABLE TRAY PLAN LOUISIANA VERTEX SECTION																																		
V049-3-003	LOUISIANA OVERALL SITE PLAN																																		
V049-3-001	GENERAL NOTES & LEGEND																																		