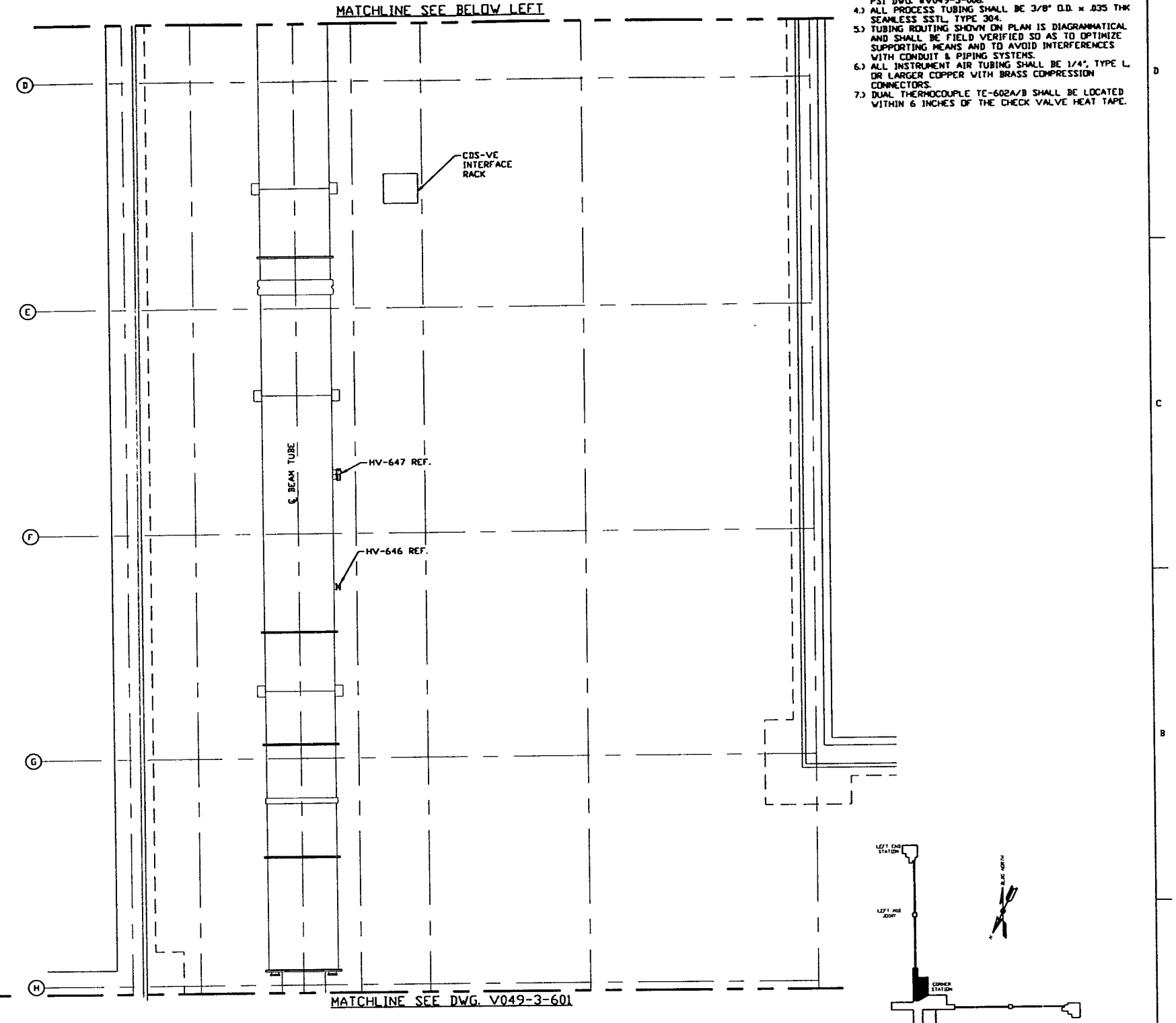
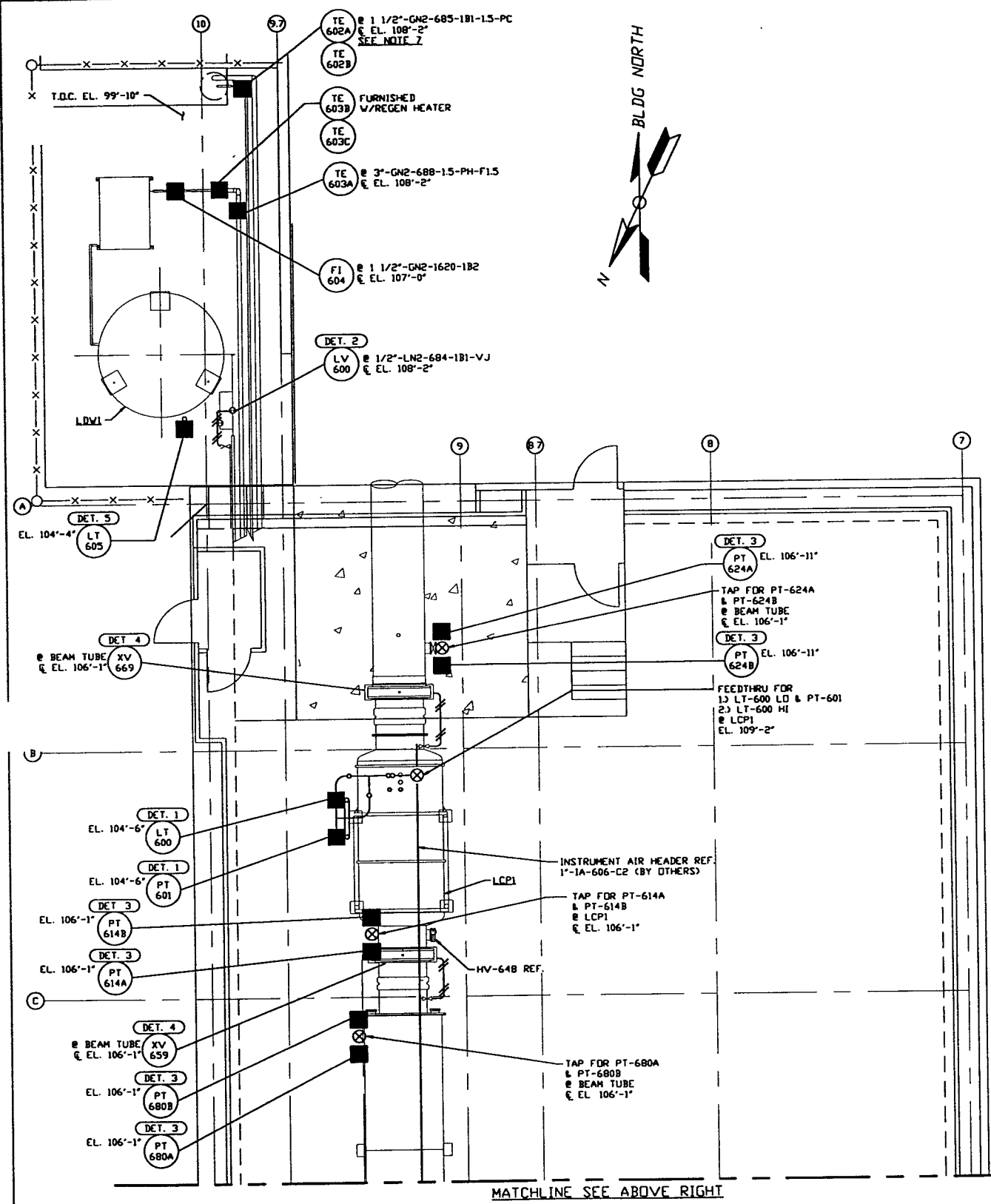


NOTES:

- 1) FOR GENERAL NOTES & LEGEND SEE PSI DVG. #V049-3-001 SHT. 1
- 2) FOR LIST OF CIVIL CONTRACTOR REFERENCE DVGs. WITH CURRENT REVISIONS SEE PSI DVG. #V049-3-001 SHT. 2
- 3) FOR INSTRUMENT INSTALLATION DETAILS SEE PSI DVG. #V049-3-008
- 4) ALL PROCESS TUBING SHALL BE 3/8" O.D. x .025 THK SEAMLESS SSTL. TYPE 304.
- 5) TUBING ROUTING SHOWN ON PLAN IS DIAGRAMMATICAL AND SHALL BE FIELD VERIFIED SO AS TO OPTIMIZE SUPPORTING MEANS AND TO AVOID INTERFERENCES WITH CONDUIT & PIPING SYSTEMS.
- 6) ALL INSTRUMENT AIR TUBING SHALL BE 1/4" TYPE L OR LARGER COPPER WITH BRASS COMPRESSION CONNECTORS.
- 7) DUAL THERMOCOUPLE TE-602A/B SHALL BE LOCATED WITHIN 6 INCHES OF THE CHECK VALVE HEAT TAPE.



LEFT BEAM MANIFOLD PLAN @ EL. 100'-0"

PRELIMINARY NOT FOR CONSTRUCTION

<p>LEGEND</p> <p>UNLESS OTHERWISE SPECIFIED DIMENSIONS ARE IN INCHES</p> <p>TOLERANCES:</p> <p>FRACTIONAL & ANGULAR: ± 0.005 BORN ± 0.01</p> <p>TWO PLACE DECIMAL: ± 0.01</p> <p>THREE PLACE DECIMAL: ± 0.005</p> <p>FURNISHED SURFACE HAS BREAK CORNERS TO REMOVE ALL BURR</p>	<p>DO NOT SCALE THIS DRAWING</p>	<p>0 ISSUE FOR LA DESIGN REVIEW</p>	<p>REVIS D. W. [Signature]</p>	<p>02.24.97</p>	<p>0430</p>																									
	<p>USED ON:</p>	<p>REV:</p>	<p>DESCRIPTION:</p>	<p>CHKD / DRWN:</p>	<p>DATE:</p>	<p>DESN:</p>																								
	<p>NEXT ASS'Y:</p>	<p>REV:</p>	<p>DESCRIPTION:</p>	<p>CHKD / DRWN:</p>	<p>DATE:</p>	<p>DESN:</p>																								
	<p>ISSUE DESCRIPTION:</p>	<p>REV:</p>	<p>DESCRIPTION:</p>	<p>CHKD / DRWN:</p>	<p>DATE:</p>	<p>DESN:</p>																								
<p>REFERENCE DRAWINGS</p> <table border="1"> <tr> <th>DWG. NO.</th> <th>DESCRIPTION</th> <th>DWG. NO.</th> <th>DESCRIPTION</th> </tr> <tr> <td>V049-5-003</td> <td>EQUIP. ARRANGEMENT LOUISIANA CORNER STATION</td> <td></td> <td></td> </tr> <tr> <td>V049-3-601</td> <td>INSTRUMENT PLAN LOUISIANA VERTEX SECTION</td> <td></td> <td></td> </tr> <tr> <td>V049-3-008</td> <td>INSTRUMENT INSTALLATION DETAILS</td> <td></td> <td></td> </tr> <tr> <td>V049-3-003</td> <td>LOUISIANA OVERALL SITE PLAN</td> <td></td> <td></td> </tr> <tr> <td>V049-3-001</td> <td>GENERAL NOTES & LEGEND</td> <td></td> <td></td> </tr> <tr> <td>V049-0-022</td> <td>P & I D LOUISIANA LEFT BEAM MANIFOLD</td> <td>V049-5-040</td> <td>PIPING PLAN LOUISIANA CORNER STATION</td> </tr> </table>	DWG. NO.	DESCRIPTION	DWG. NO.	DESCRIPTION	V049-5-003	EQUIP. ARRANGEMENT LOUISIANA CORNER STATION			V049-3-601	INSTRUMENT PLAN LOUISIANA VERTEX SECTION			V049-3-008	INSTRUMENT INSTALLATION DETAILS			V049-3-003	LOUISIANA OVERALL SITE PLAN			V049-3-001	GENERAL NOTES & LEGEND			V049-0-022	P & I D LOUISIANA LEFT BEAM MANIFOLD	V049-5-040	PIPING PLAN LOUISIANA CORNER STATION	<p>PROCESS SYSTEMS INTERNATIONAL, INC.</p> <p>20 WALKUP DR. WESTBOROUGH, MASSACHUSETTS 01581 USA</p> <p>INSTRUMENT PLAN</p> <p>LIGO VACUUM EQUIPMENT</p> <p>LOUISIANA SITE</p> <p>LEFT BEAM MANIFOLD</p>	<p>CAR FILE: V0493602</p> <p>SIZE: D</p> <p>DWG. NO.: V049-3-602</p> <p>REV: 0</p> <p>SCALE: 3/16" = 1' - 0"</p> <p>SHEET: 1 OF 1</p>
DWG. NO.	DESCRIPTION	DWG. NO.	DESCRIPTION																											
V049-5-003	EQUIP. ARRANGEMENT LOUISIANA CORNER STATION																													
V049-3-601	INSTRUMENT PLAN LOUISIANA VERTEX SECTION																													
V049-3-008	INSTRUMENT INSTALLATION DETAILS																													
V049-3-003	LOUISIANA OVERALL SITE PLAN																													
V049-3-001	GENERAL NOTES & LEGEND																													
V049-0-022	P & I D LOUISIANA LEFT BEAM MANIFOLD	V049-5-040	PIPING PLAN LOUISIANA CORNER STATION																											

LIGO-D970112-00-V