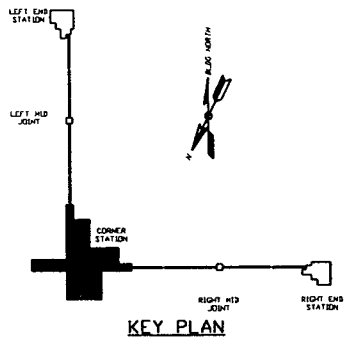
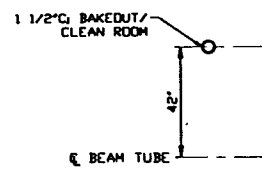


- NOTES:**
- 1) PROVIDE PULL TAPE IN EACH CONDUIT.
 - 2) ALL UNDERGROUND INSTALLATION AND DETAILS ARE BY OTHERS.
 - 3) POWER SOURCE SHALL BE AS FOLLOWS:
 - A) BAKEDOUT/CLEAN ROOM 480/277VAC
 - B) ROUGHING CART 480/277VAC
 - C) GATE VALVE 480/277VAC
 - D) GENERAL/ION PUMPS 120VAC
 - E) BAKEDOUT CONTROL 120VAC
 - F) TURBO CART 208/120VAC
 - 4) FOR EQUIPMENT POWER REQUIREMENTS, REFER TO PSI DOCUMENT #V049-1-047.
 - 5) FOR GENERAL NOTES & LEGEND SEE PSI DVG. #V049-3-001 SHT. 1.
 - 6) FOR LIST OF CIVIL CONTRACTOR REFERENCE DWGS. WITH CURRENT REVISIONS SEE PSI DVG. #V049-3-001 SHT. 2.

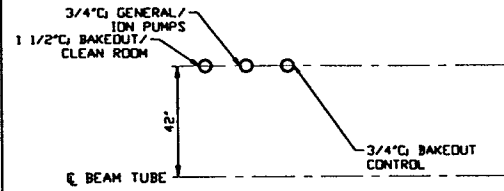


LIGO-D970076-01-V

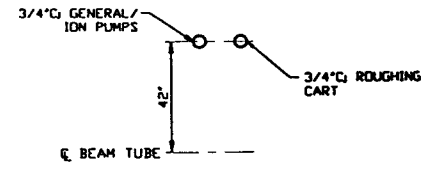
<p>PROPRIETARY AND CONFIDENTIAL</p> <p>DOCUMENT CONTAINS PROPRIETARY INFORMATION BELONGING TO PROCESS SYSTEMS INTERNATIONAL, INC. OR ITS SUBSIDIARIES AND SHALL BE USED ONLY FOR THE PURPOSE FOR WHICH IT WAS SUPPLIED. IT SHALL NOT BE COPIED, REPRODUCED OR OTHERWISE USED, NOR SHALL SUCH INFORMATION BE FURNISHED IN WHOLE OR IN PART TO OTHERS EXCEPT IN ACCORDANCE WITH THE TERMS OF ANY AGREEMENT UNDER WHICH IT WAS SUPPLIED OR WITH THE PRIOR WRITTEN CONSENT OF PROCESS SYSTEMS INTERNATIONAL, INC. AND SHALL BE RETURNED UPON REQUEST.</p>		<p>UNLESS OTHERWISE SPECIFIED DIMENSIONS ARE IN INCHES</p> <p>TOLERANCES:</p> <ul style="list-style-type: none"> FRACTIONAL: ± ANGULAR/ARCH 1/2"± 20" BEYOND 48" TWO PLACE DECIMAL: ± 0.01 THREE PLACE DECIMAL: ± 0.005 FURNISHED SURFACE FINISH: BREAK CORNERS IN OUT-REMOVE ALL BUMPS 		<p>1 ISSUE FOR LA DESIGN REVIEW</p> <p>0 ISSUE FOR INSTALLATION</p>		<p>02.24.97 0430</p> <p>12.03.96 0374</p>		<p>CAD FILE: V0493624\3624S1</p> <p>SIZE: D</p> <p>DWG. NO.: V049-3-624</p> <p>SCALE: 1" = 10'-0"</p>		<p>PROCESS SYSTEMS INTERNATIONAL, INC.</p> <p>20 WALKUP DR. WESTBOROUGH, MASSACHUSETTS 01581 USA</p> <p>ELECTRICAL CONDUIT STUB-UP PLAN</p> <p>LIGO VACUUM EQUIPMENT</p> <p>LOUISIANA SITE</p> <p>CORNER STATION</p>			
DWG. NO.	DESCRIPTION	DWG. NO.	DESCRIPTION	USED DN	REV	DESCRIPTION	ISSUE DESCRIPTION	CHKD	DRWN	DATE	DESN	SCALE	SHEET
	REFERENCE DRAWINGS												1 OF 2



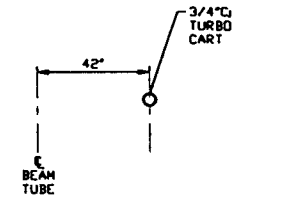
DETAIL 1 REF.
NO SCALE V049-3-624 SHT. 1



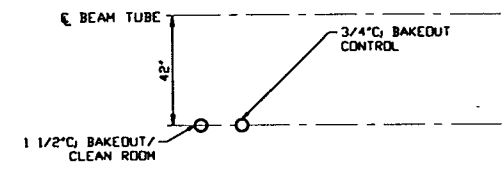
DETAIL 2 REF.
NO SCALE V049-3-624 SHT. 1



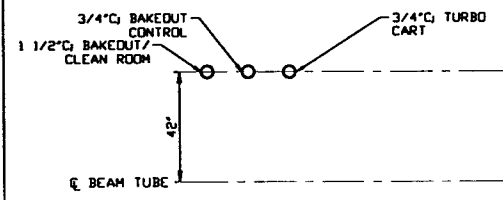
DETAIL 3 REF.
NO SCALE V049-3-624 SHT. 1



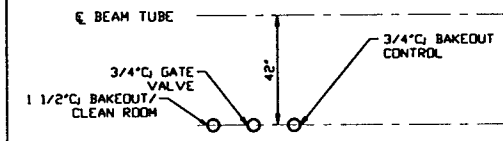
DETAIL 4 REF.
NO SCALE V049-3-624 SHT. 1



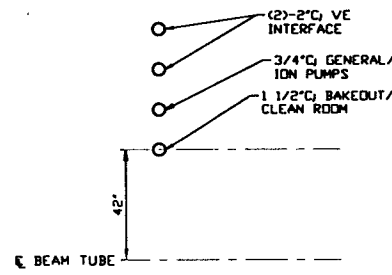
DETAIL 7 REF.
NO SCALE V049-3-624 SHT. 1



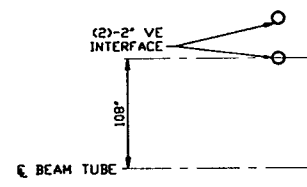
DETAIL 9 REF.
NO SCALE V049-3-624 SHT. 1



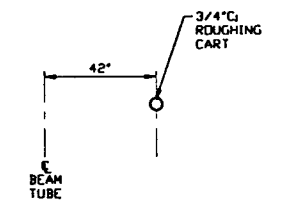
DETAIL 10 REF.
NO SCALE V049-3-624 SHT. 1



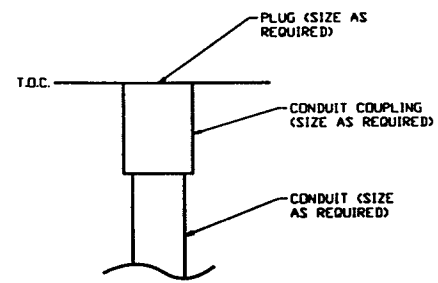
DETAIL 11 REF.
NO SCALE V049-3-624 SHT. 1



DETAIL 12 REF.
NO SCALE V049-3-624 SHT. 1



DETAIL 14 REF.
NO SCALE V049-3-624 SHT. 1



DETAIL 16 REF.
NO SCALE V049-3-624 SHT. 1

LIGO-D970076-01-V

SEE SHEET 1 FOR REVISIONS

PROCESS SYSTEMS INTERNATIONAL INC. 20 WALKUP DR. WESTBOROUGH, MASSACHUSETTS 01581 USA			
ELECTRICAL CONDUIT STUB-UP PLAN LIGO VACUUM EQUIPMENT LOUISIANA SITE CORNER STATION			
CAD FILE	SIZE	DWG. NO.	REV.
V0493624/3624S2	D	V049-3-624	1
SCALE	NONE	SHEET	2 OF 2