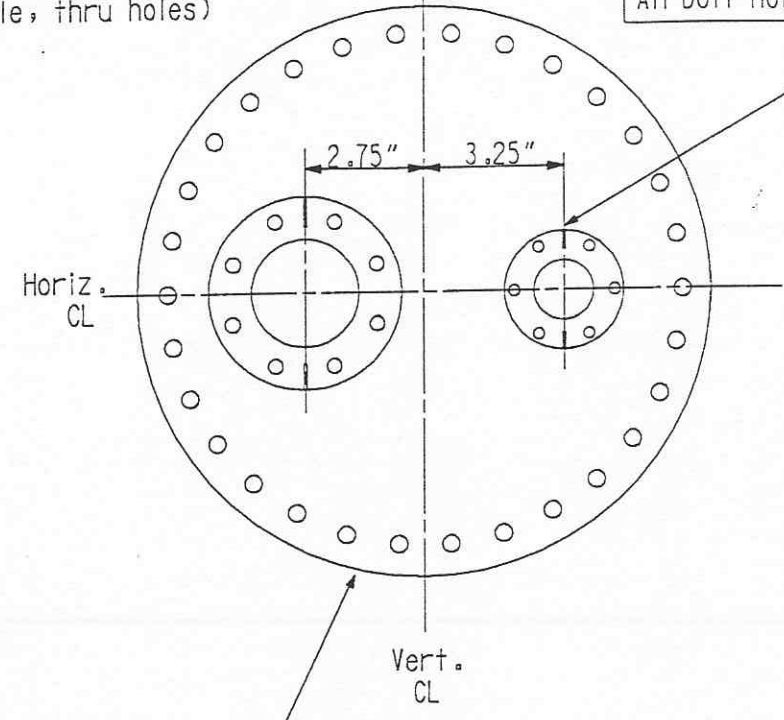


"Conflat" or equal
4.5" O.D. half nipple
(non-rotatable, thru holes)

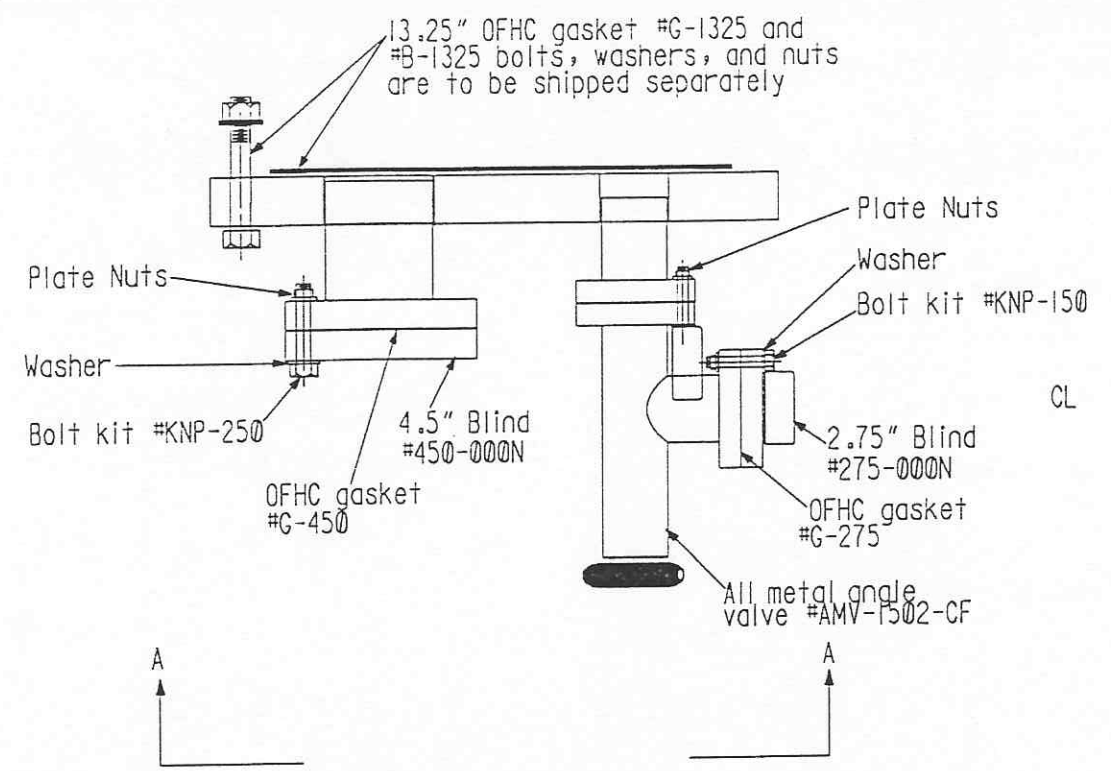
"Conflat" or equal
2.75" O.D. half nipple
(non-rotatable, thru holes)

All bolt holes to straddle vert. CL

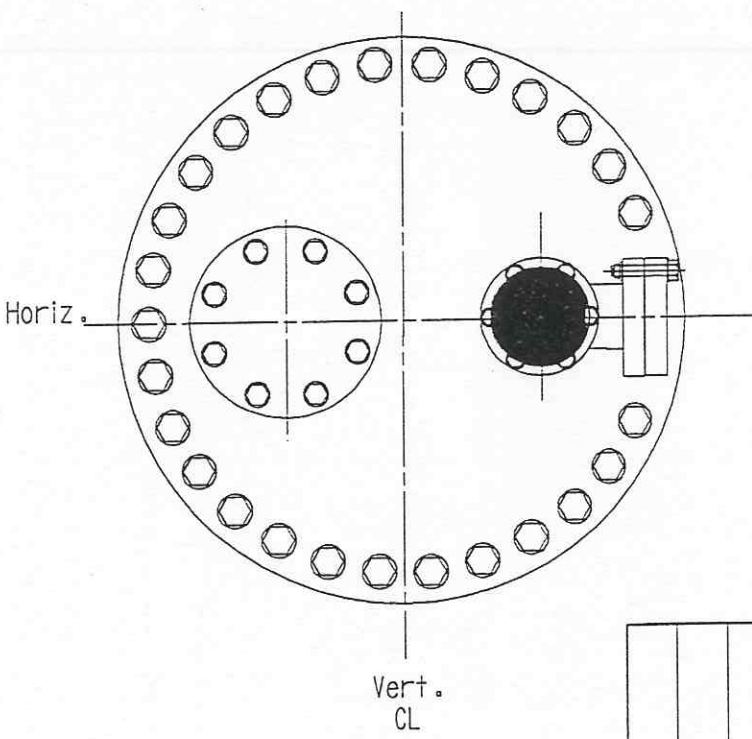


All flanges are to be provided with leak checking groove across flange

13.25" nominal O.D. "Conflat" or equal flange (SA240 type 304L forging mat'l.) (blind - non-rotatable - thru holes)



All bolt holes to straddle vert. CL



View A-A

Also provide one (1) 4.5" O.D. "Conflat" blind, one (1) set of bolts, nuts, and washers, one (1) OFHC gasket, one (1) 2.75" "Conflat" blind, one (1) set of bolts, nuts, and washers, one (1) OFHC gasket, one (1) 13.25" gasket, one (1) one (1) set of bolts, nuts, and washers, and one (1) NorCal angle valve #AMV-1502-CF

Each pump port flange assembly is to be completely cleaned, assembled, and packaged for shipment in accordance with CBI specification H-PORT.

Supplier's/Purchaser's No.		Contract No. 953571	
LIGO-D970060-00-B LIGO-BEAM TUBE HANFORD, WA & LIVINGSTON, LA			
TUBE SECTION LEAK TEST PUMP PORT NOZZLE AND VALVES			
Customer's No.		Contract No.	
By CLD		Date 6-1-96	
M. L. TELLALIAN		Dwg. ER607	
Engineering Supervisor		Sheet 8	
<small>THIS DRAWING HAS BEEN PREPARED FOR AND IS THE PROPERTY OF CBI AND IS TO BE USED ONLY IN CONNECTION WITH PERFORMANCE OF WORK BY CBI. REPRODUCTION IN WHOLE OR IN PART FOR ANY OTHER PURPOSE IS EXPRESSLY FORBIDDEN.</small>			
<small>THIS DRAWING HAS BEEN PREPARED BY DESIGN CONSTRUCTION SERVICES INT'L. (DCS)</small>		<small>ER607</small>	
<small>FORM CG 38 A REV 5/7 83</small>		<small>FORN CG 38 A REV 5/7 83</small>	

INDICATES CHANGE FROM PREVIOUS ISSUE