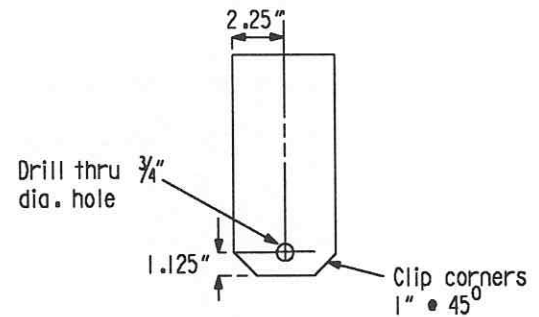
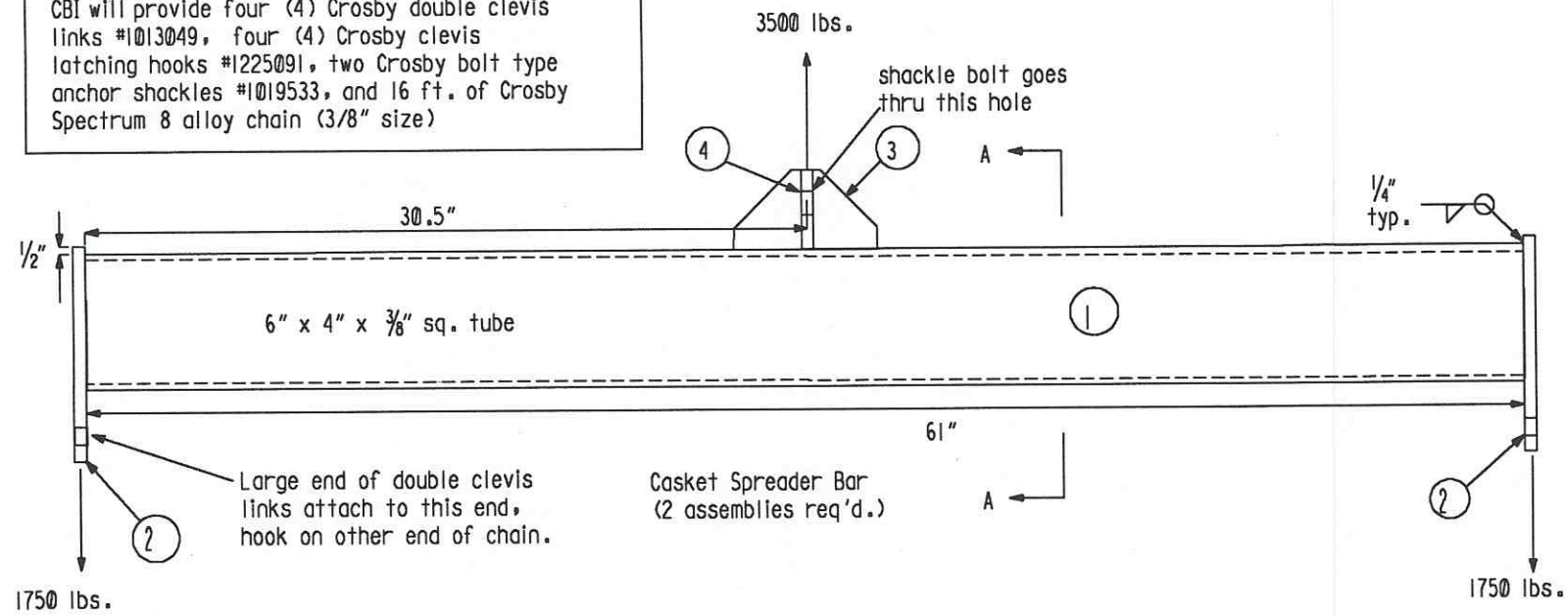
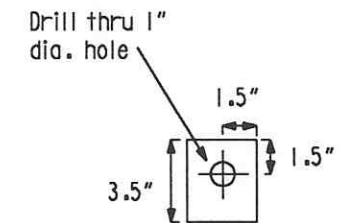


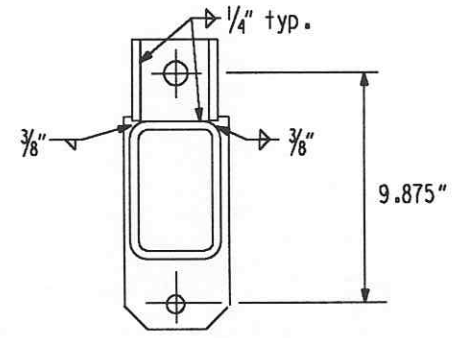
CBI will provide four (4) Crosby double clevis links #1013049, four (4) Crosby clevis latching hooks #1225091, two Crosby bolt type anchor shackles #1019533, and 16 ft. of Crosby Spectrum 8 alloy chain (3/8" size)



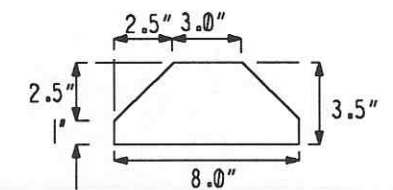
Pc. 2 (4 pcs. req'd.) A36 plate
Make from 4.5" x 9.5" x 1/2"



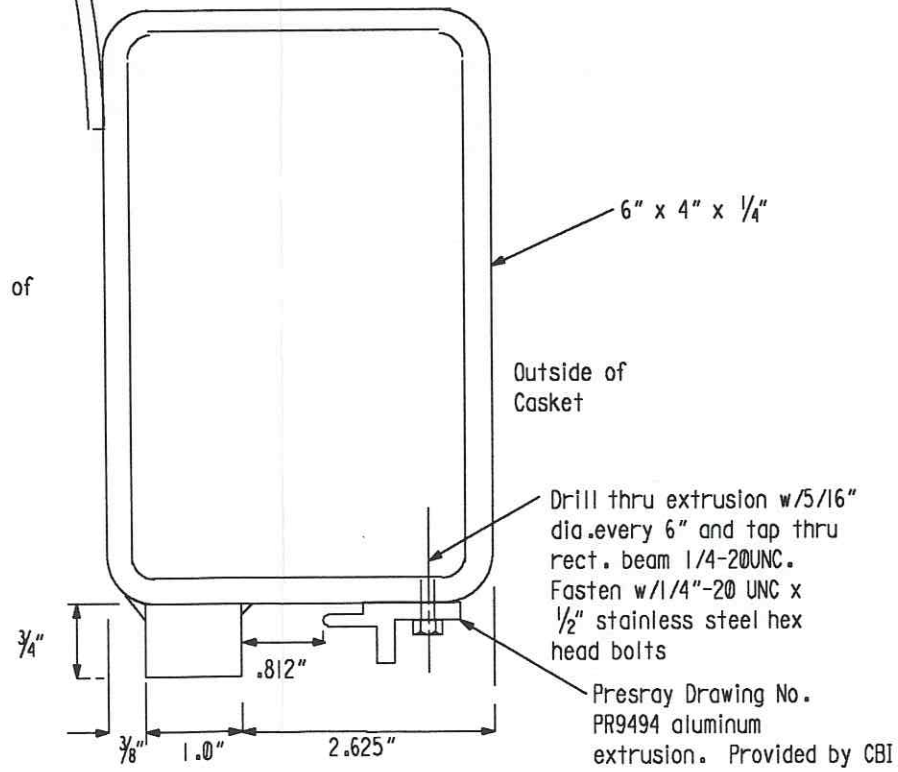
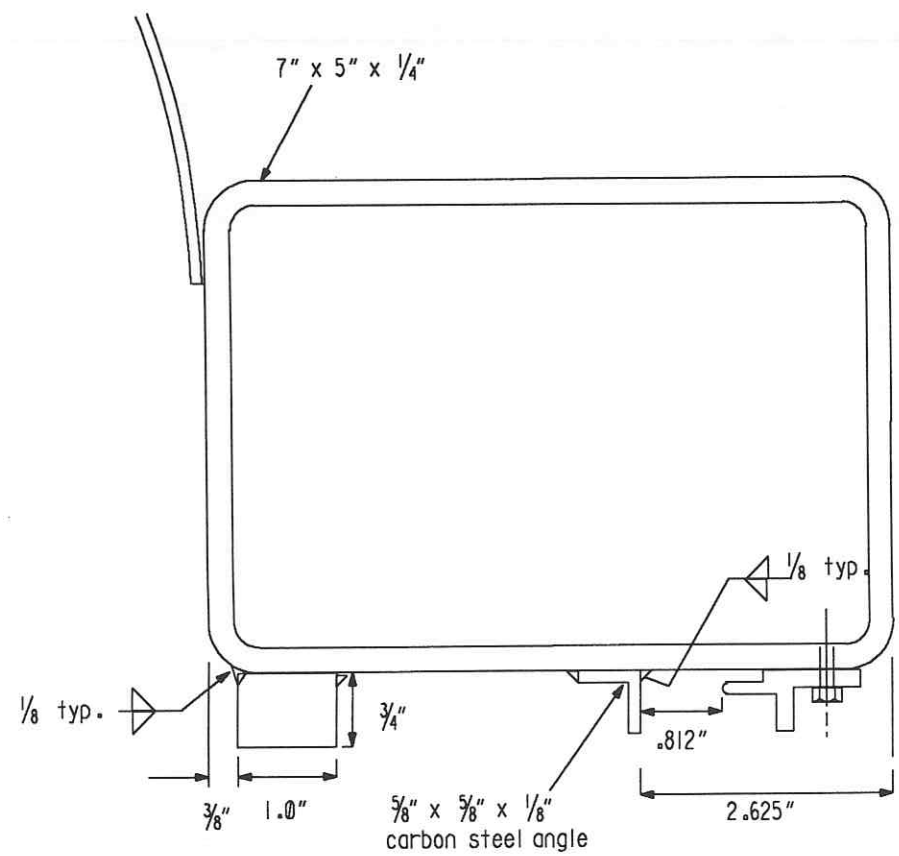
Pc. 4 (2 req'd.) A36 plate
Make from 3" x 3.5" x 1/2"



Section A-A



Pc. 3 (4 pcs. req'd.) A36
Make from 3.5" x 8" x 3/8" plate



INDICATES CHANGE FROM PREVIOUS ISSUE

Supplier's/Purchaser's No.		Contract No.	
CBI		953571	
LIGO-BEAM TUBE			
HANFORD, WA & LIVINGSTON, LA			
TUBE SECTION LEAK TEST			
SPREADER BAR AND CASSET SEAL			
Customer's No.	By	Date	Rev.
	CLD	2-26-96	0
	M. L. TELLALIAN		
	Engineering Supervisor		
Dwg. ER221		Sheet	
LIGO-D970032-00-B			