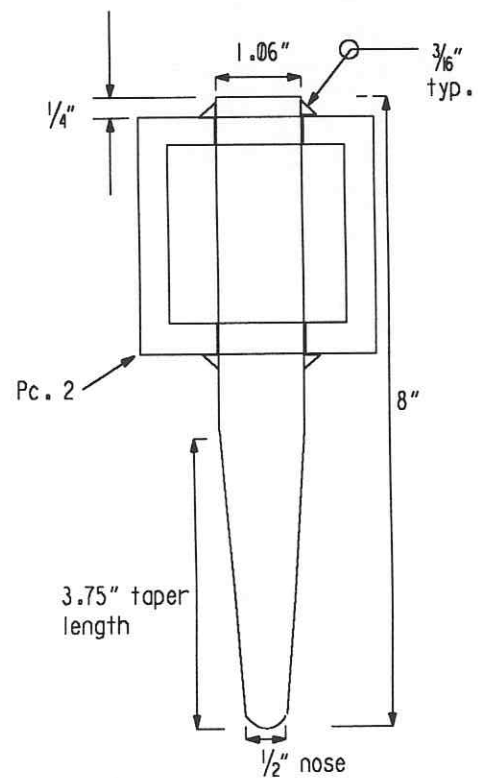


Drill thru 1.125" dia.

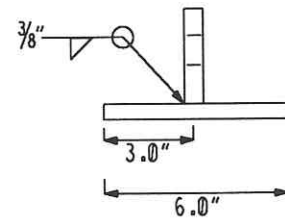
Drill thru 1.062" dia.

Pc. 1 (18 pcs. req'd.)
Make from 3" x 3" x 1/2" A36 angle

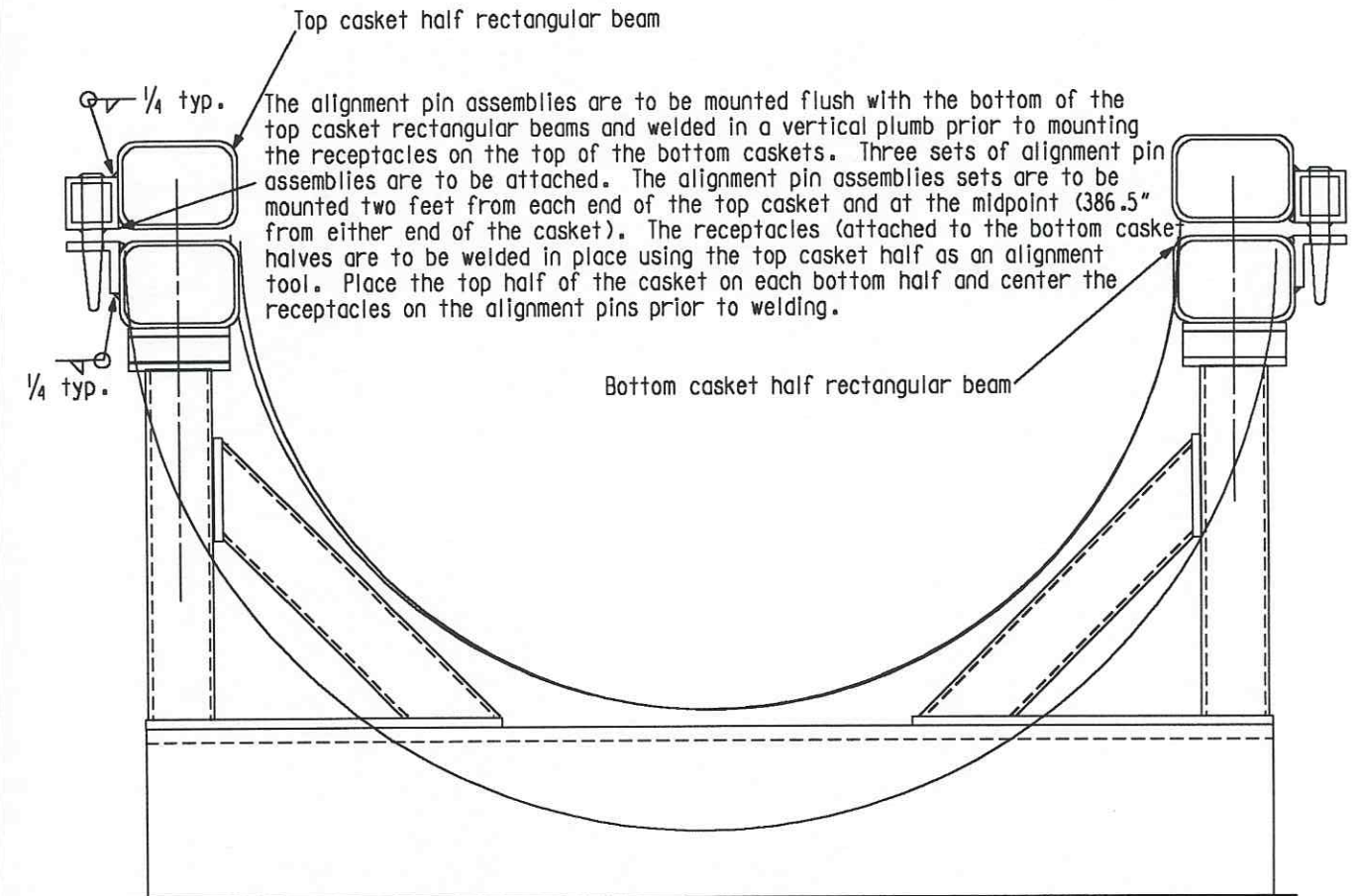
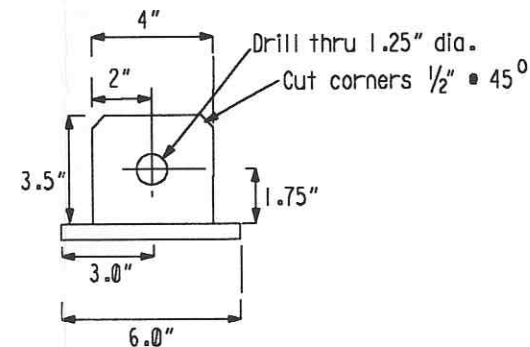
Pc. 2 (6 pcs. req'd.)
Make from 3" x 3" x 3/8" A36 square tube



Pc. 3 Drift Pin (6 pcs. req'd.)
McMaster-Carr #6054A6



Casket Top Half Lifting Lugs
Make from 1/2" thk. A36 plates
(4 assy's. req'd. for casket top)



Casket Bottom Supports

INDICATES CHANGE FROM PREVIOUS ISSUE

Supplier's/Purchaser's No.	
CBI	
LIGO-BEAM TUBE	
HANFORD, WA & LIVINGSTON, LA	
TUBE SECTION LEAK TEST	
CASSET ALIGNMENT PINS AND LUGS	
Customer's No.	Contract No.
By CLD Chkd <i>[Signature]</i> Date <i>2-26-90</i>	953571
M. L. TELLALIAN Engineering Supervisor	Dwg. ER220 Rev. 0 Sheet
LIGO-D970031-00-B	