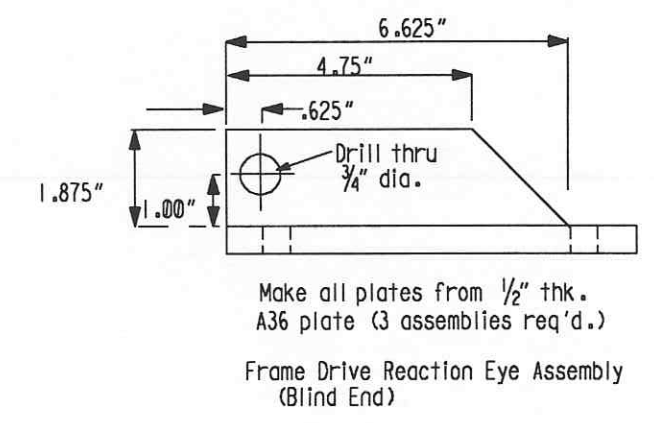
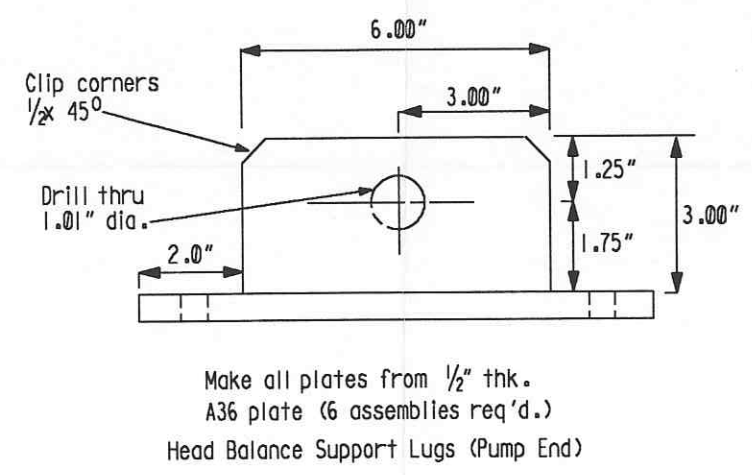
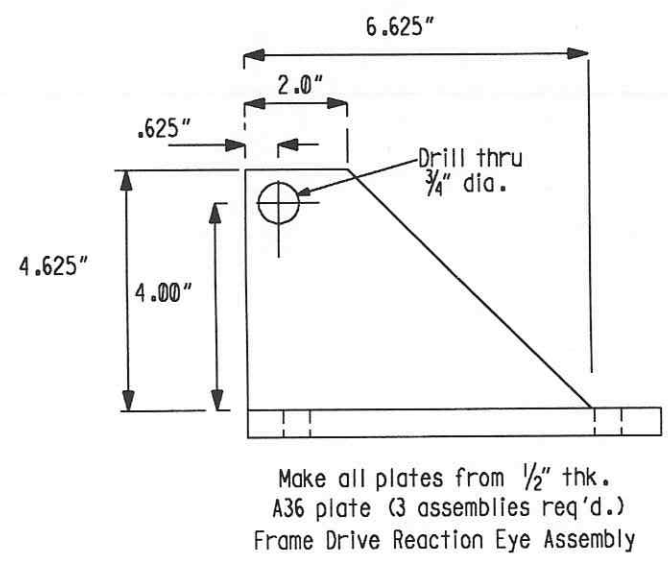
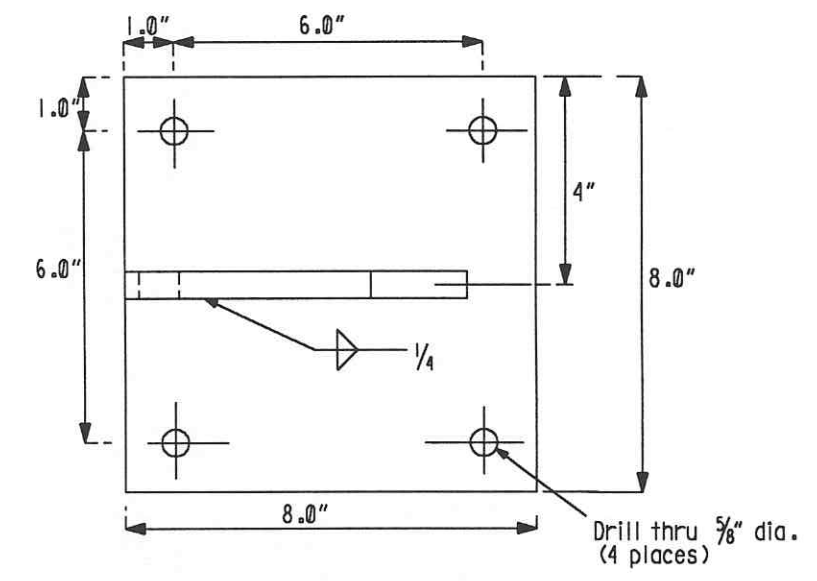
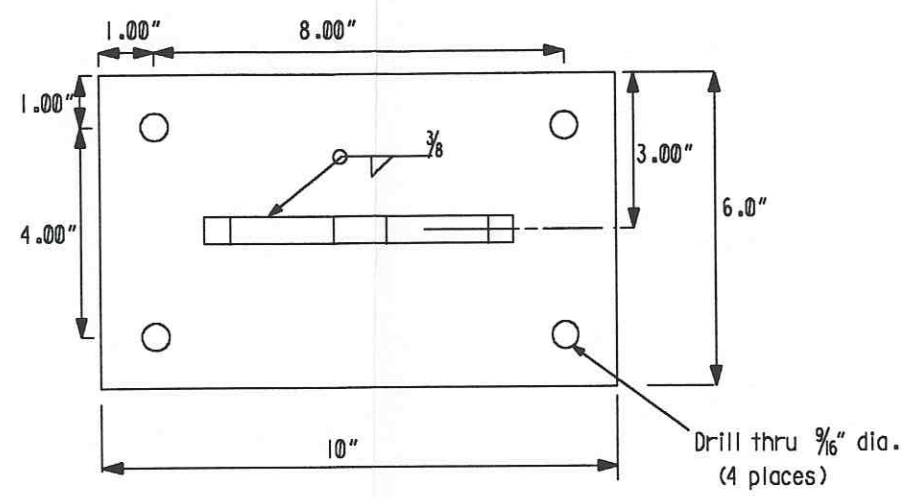
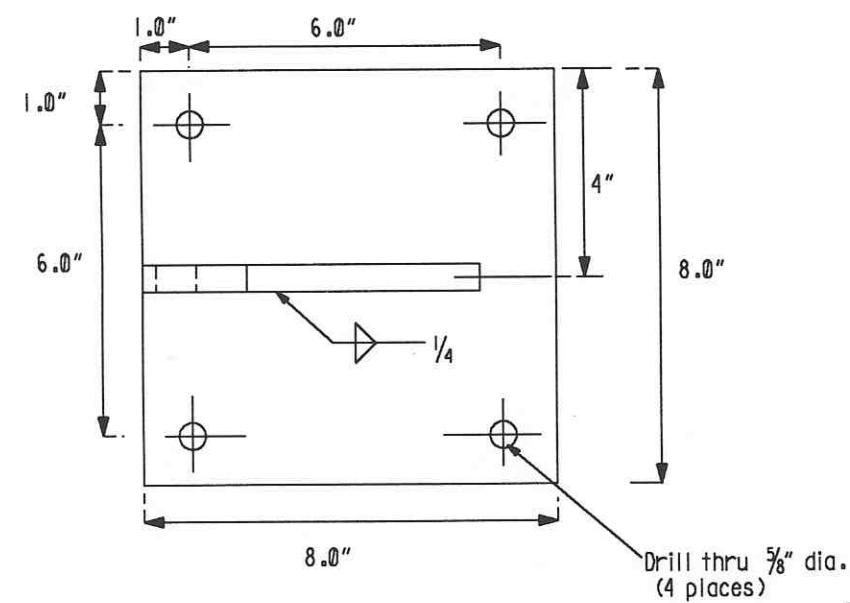


Also provide six (6) - 1" dia. x 2" long clevis pins McMaster-Carr #98306A677, (6) - 1" washers, and (6) - 3/16" dia. x 2" long cotter pins



INDICATES CHANGE FROM PREVIOUS ISSUE

Supplier's/Purchaser's No.	
LIGO-BEAM TUBE HANFORD, WA & LIVINGSTON, LA TUBE SECTION LEAK TEST FRAME DRIVE AND BALANCE LUG	
Customer's No.	Contract No.
By <u>CLD</u> <u>CHKD</u> <u>APR</u> Date <u>2-26-90</u>	953571
M. L. TELLALIAN Engineering Supervisor	Dwg. ER218 Rev. 0 Sheet 0
LIGO-D970629-00-B	