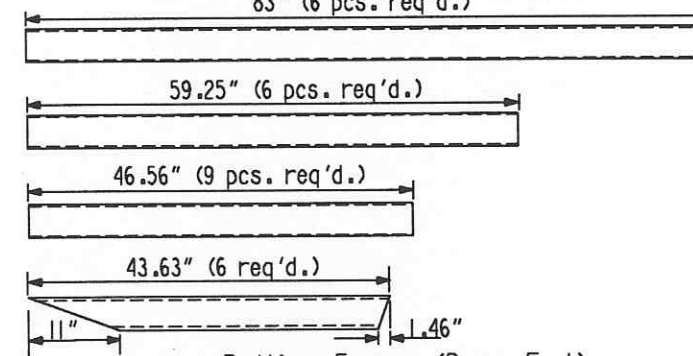
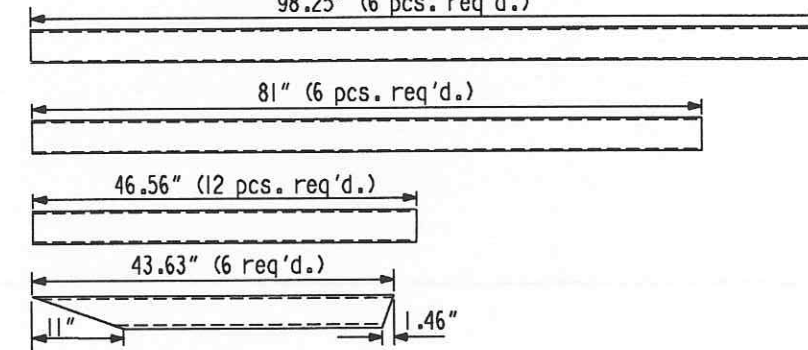


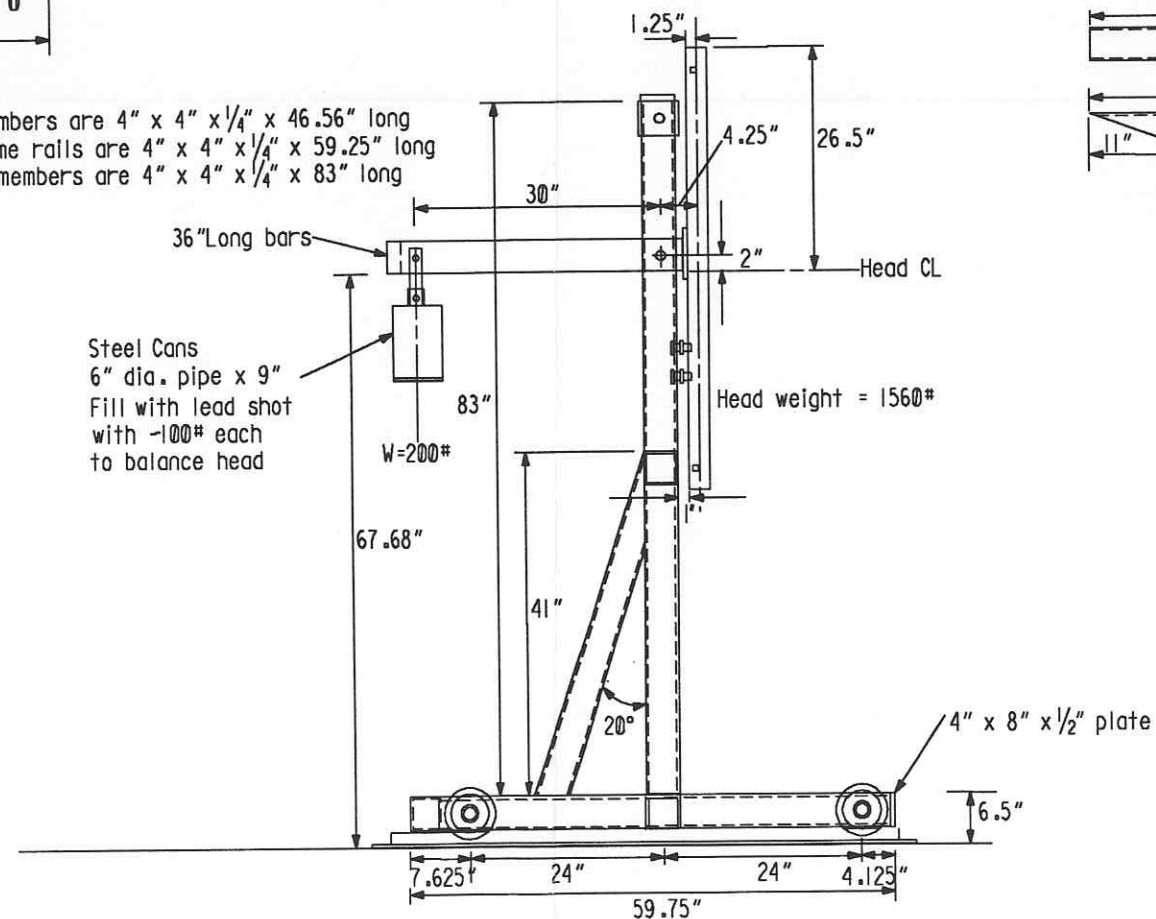
**Rolling Frame (Blind End)**  
 Cross members are 4" x 4" x 1/4" x 46.56" long  
 Vertical members are 4" x 4" x 1/4" x 83" long  
 Main frame rails are 4" x 4" x 1/4" x 63.25" long  
 Braces are 4" x 4" x 1/4" (See sketch)  
 83" (6 pcs. req'd.)



**Rolling Frame (Pump End)**  
 Cross members are 4" x 4" x 1/4" x 46.56" long  
 Vertical members are 4" x 4" x 1/4" x 81" long  
 Main frame rails are 4" x 4" x 1/4" x 98.25" long  
 Braces are 4" x 4" x 1/4" (See sketch)  
 98.25" (6 pcs. req'd.)



Cross members are 4" x 4" x 1/4" x 46.56" long  
 Main frame rails are 4" x 4" x 1/4" x 59.25" long  
 Vertical members are 4" x 4" x 1/4" x 83" long



Rolling Frame (Blind End)

INDICATES CHANGE FROM PREVIOUS ISSUE

REV	DATE	BY	CHKD	DATE	REVISIONS
1	10-10-96				REV'D ROLLING FRAME DIM.

Supplier's/Purchaser's No. \_\_\_\_\_

**CBI**

**LIGO-BEAM TUBE**  
 HANFORD, WA & LIVINGSTON, LA

TUBE SECTION LEAK TEST  
 BLIND END HEAD SUPPORTS

Customer's No. \_\_\_\_\_ Contract No. 953571

By CLD Chkd DWD Date 2-27-96

M. L. TELLALIAN  
 Engineering Supervisor

Dwg. ER214 Rev. I

Sheet

LIGO-D970025-01-13