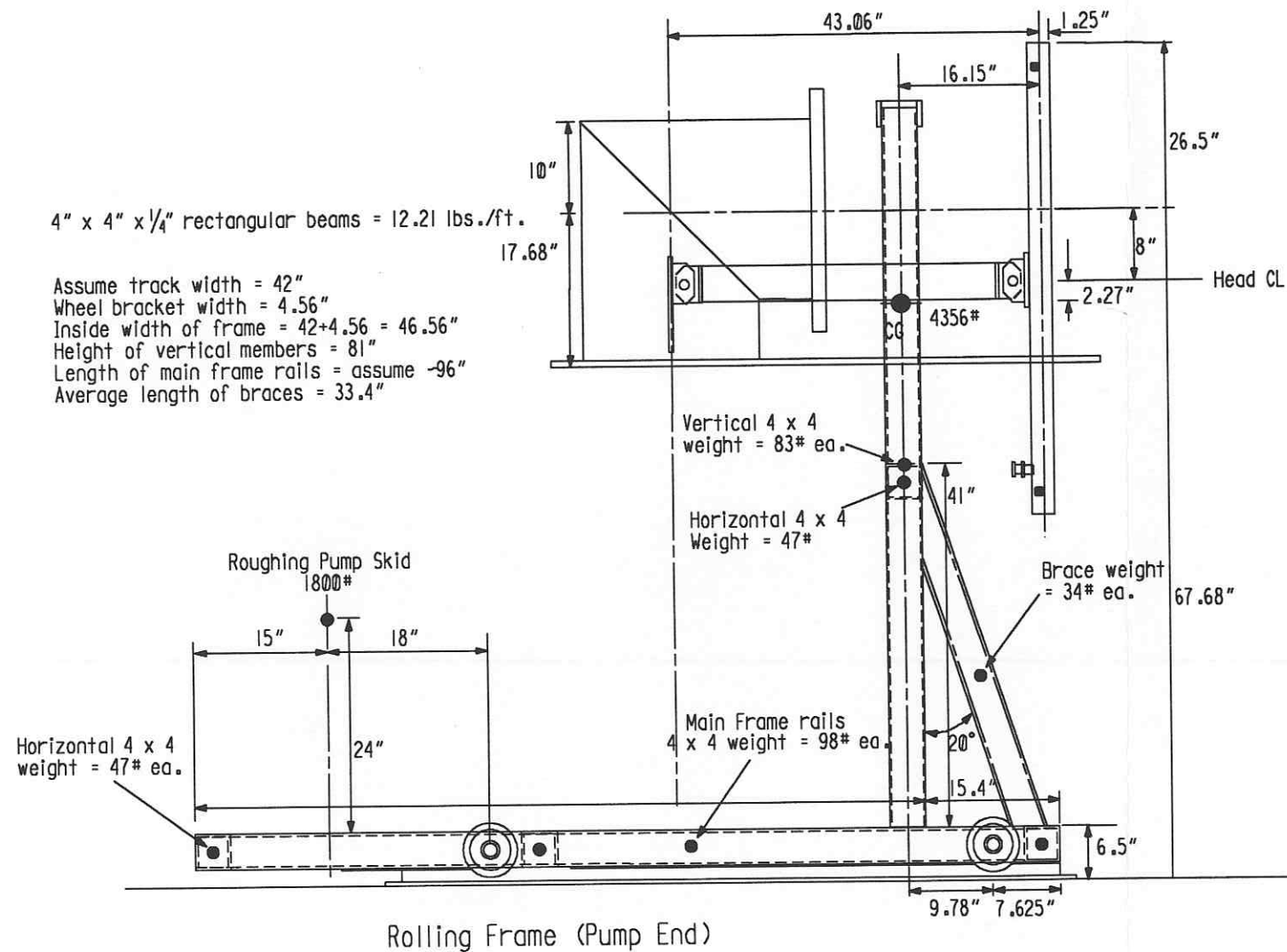


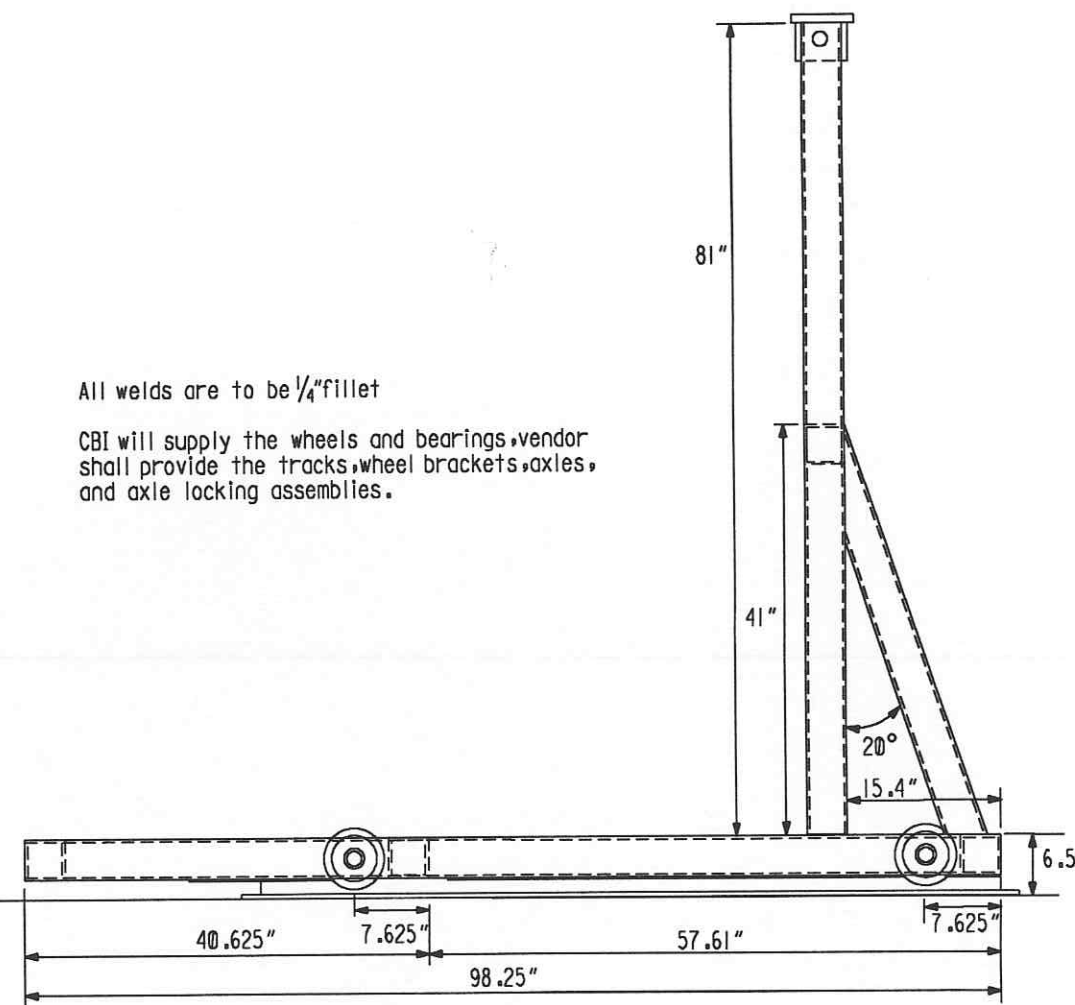
4" x 4" x 1/4" rectangular beams = 12.21 lbs./ft.

Assume track width = 42"
 Wheel bracket width = 4.56"
 Inside width of frame = 42+4.56 = 46.56"
 Height of vertical members = 81"
 Length of main frame rails = assume -96"
 Average length of braces = 33.4"



All welds are to be 1/4" fillet

CBI will supply the wheels and bearings, vendor shall provide the tracks, wheel brackets, axles, and axle locking assemblies.



Rolling Frame (Pump End)
 (3 Frames req'd.)

Supplier's/Purchaser's No.	
LIGO-BEAM TUBE HANFORD, WA & LIVINGSTON, LA TUBE SECTION LEAK TEST PUMP END FRAME	
Customer's No.	Contract No.
By CLD Chkd DMD Date 2-26-96	953571
M. L. TELLALJAN Engineering Supervisor	Dwg. ER212 Rev. 1 Sheet
LIGO-D970023-01-B	

INDICATES CHANGE FROM PREVIOUS ISSUE

By	Chkd	Date	By	Chkd	Date