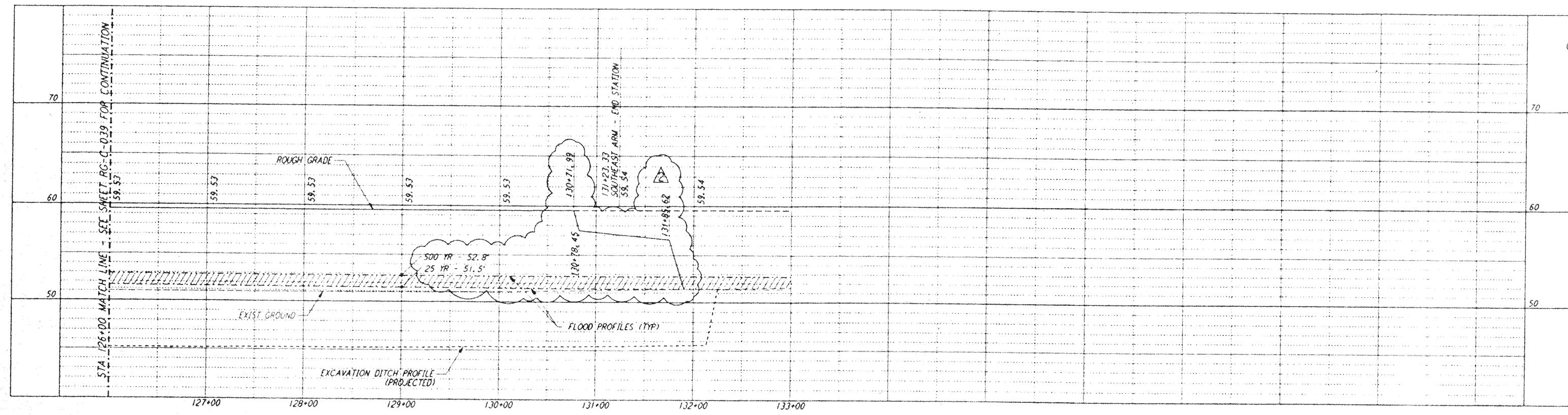


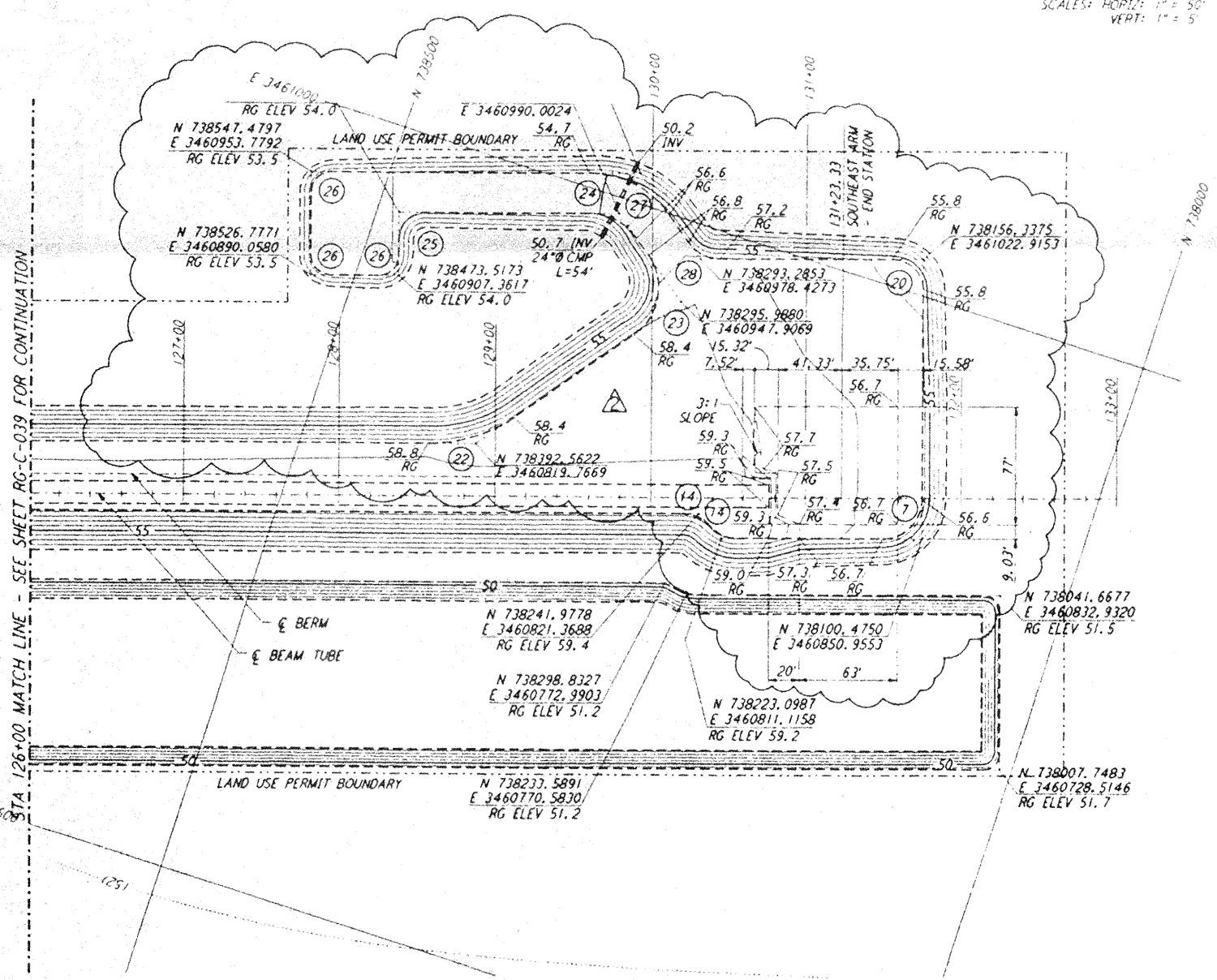
This document and the design it covers are the property of PARSONS. They are loaned only with the borrower's expressed written agreement that they will not be reproduced, copied, loaned, exhibited, or used in any other way, except by written consent from PARSONS to the borrower.



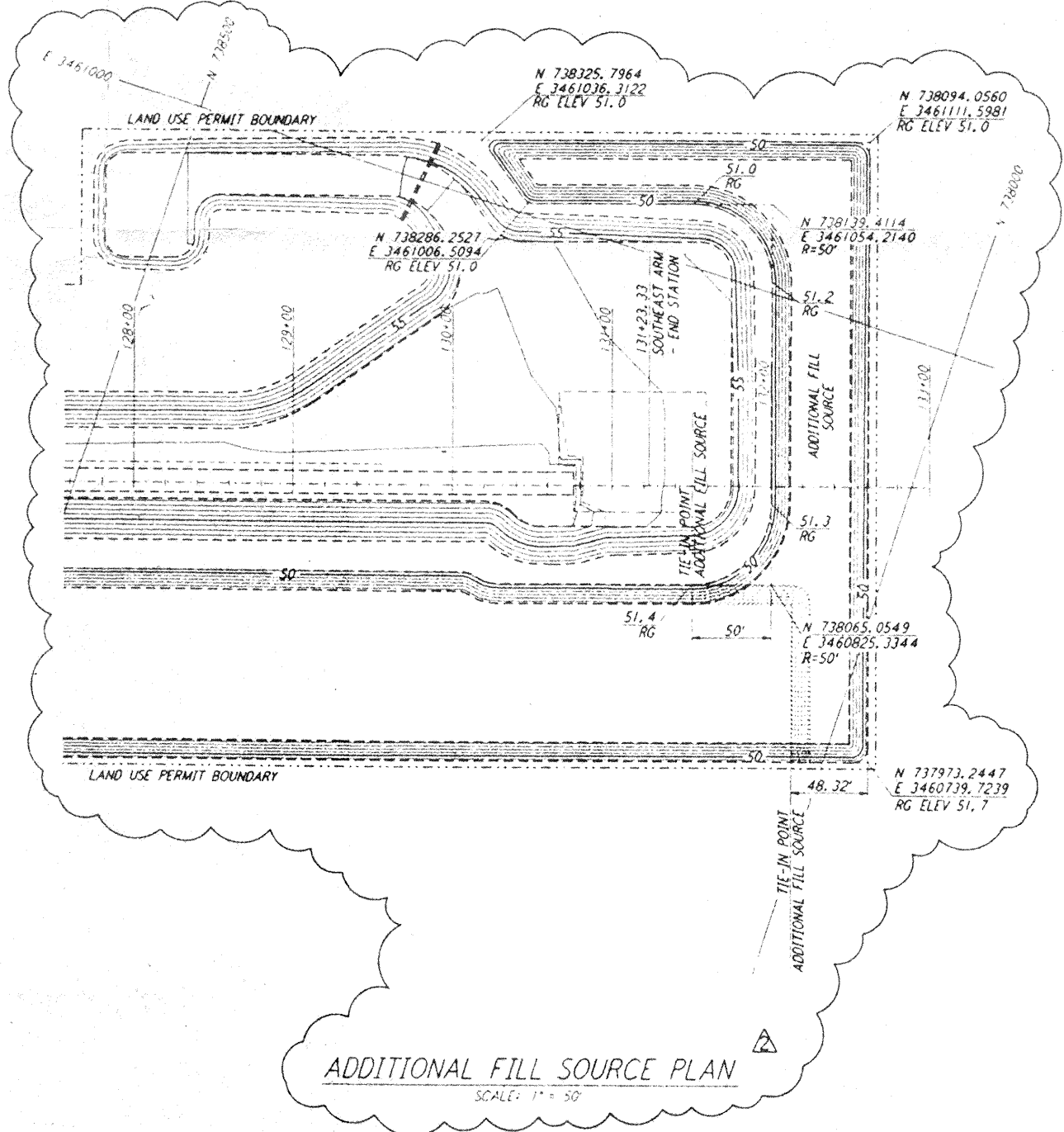
NOTES:
 1. SEE SHEET RG-C-002 FOR GENERAL NOTES, LEGEND AND ABBREVIATIONS.
 2. SEE SHEET RG-C-002 FOR LOCATION(S) OF SETTLEMENT PLATES AND LIMITS AND NOTE REGARDING COMPACTION WITHIN FUTURE BUILDING AREA.

CURVE DATA			
Δ	RADIUS	LENGTH	TANGENT
7	90°00'00"	25.00'	29.27'
14	46°23'52"	25.00'	20.24'
20	90°00'00"	20.00'	31.42'
22	35°00'00"	97.00'	59.25'
23	90°00'00"	37.00'	58.12'
24	55°00'00"	37.00'	35.52'
25	90°00'00"	17.00'	26.70'
26	90°00'00"	13.00'	20.42'
27	55°00'00"	62.00'	60.48'
28	55°00'00"	25.00'	24.00'

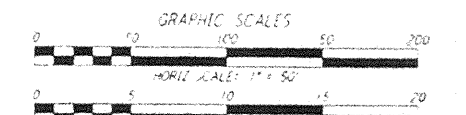
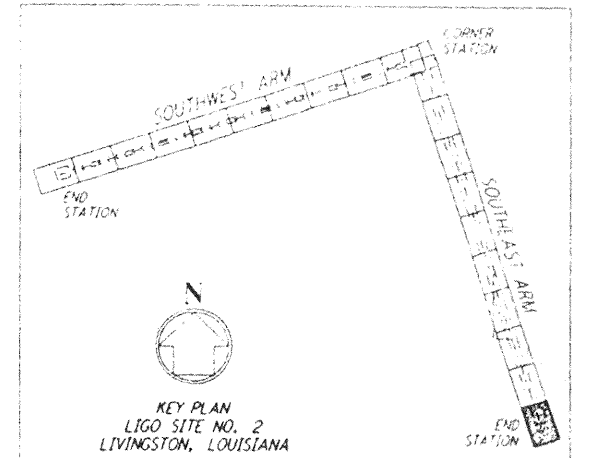
PROFILE
 SCALES: HORIZ: 1" = 50'
 VERT: 1" = 5'



PLAN
 SCALE: 1" = 50'



ADDITIONAL FILL SOURCE PLAN
 SCALE: 1" = 50'



L160-0961745-02-0

NO.	DATE	APPROVED BY	DESCRIPTION OF REVISION
1	11/1/95	Tom	NO REVISIONS
2	5/24/96	Tom	REVISED GRADING, ADDED FILL SOURCE, ADDED NOTE
3			
4			
5			
6			
7			
8			
9			

NO.	DATE	APPROVED BY	ISSUED FOR
1	8/28/95	Tom	ISSUED FOR BID
2	11/1/95	Tom	ISSUED FOR CONSTRUCTION
3	5/24/96	Tom	CHANGE ORDER NO. 5
4			
5			
6			
7			
8			
9			

DATE	BY
8/28/95	Tom
8/28/95	Tom
8/28/95	Tom
8/28/95	Tom

PARSONS
 100 WEST WALNUT STREET
 PASADENA, CALIFORNIA

LIGO
 CALIFORNIA INSTITUTE OF TECHNOLOGY
 MASSACHUSETTS INSTITUTE OF TECHNOLOGY

**LASER INTERFEROMETER
 GRAVITATIONAL-WAVE OBSERVATORY
 ROUGH GRADING - LIVINGSTON, LA**
 AS NOTED PPI50969 8094
RG-C-040