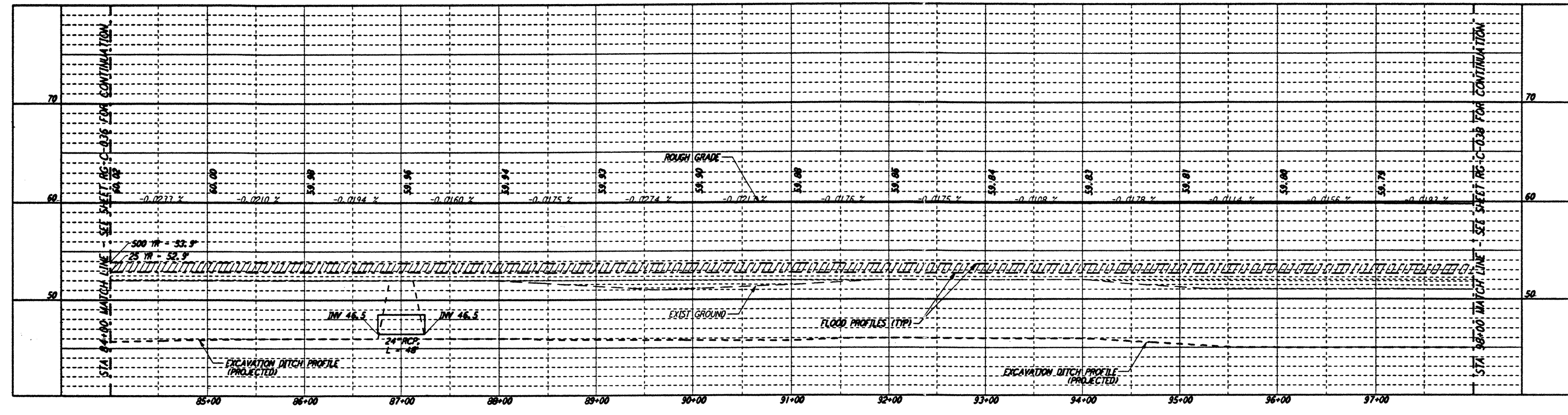


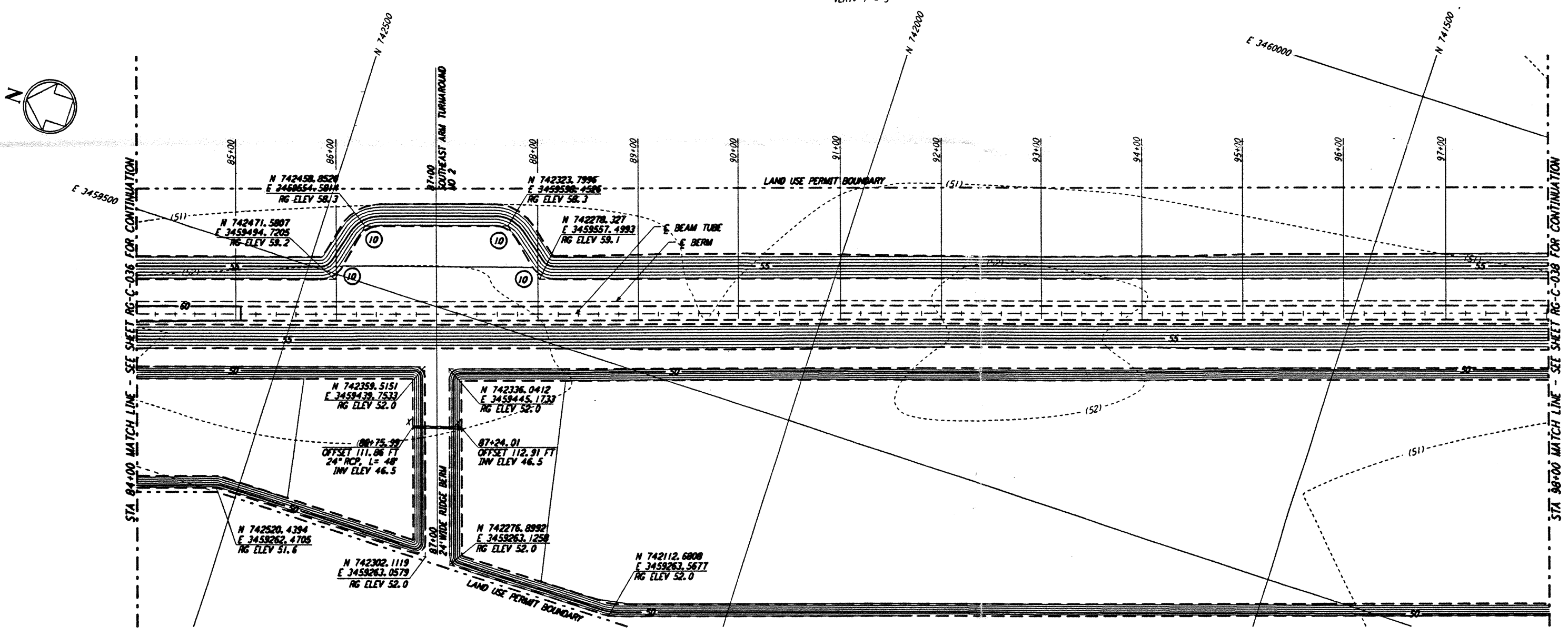
This document and the design it covers are the property of PARSONS. They are loaned only with the borrower's expressed written agreement that they will not be reproduced, copied, loaned, exhibited, or used in any other way, except by written consent from PARSONS to the borrower.

NOTES:
 1. SEE SHEET RG-C-002 FOR GENERAL NOTES, LEGEND AND ABBREVIATIONS.

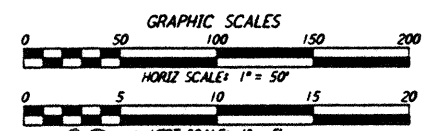
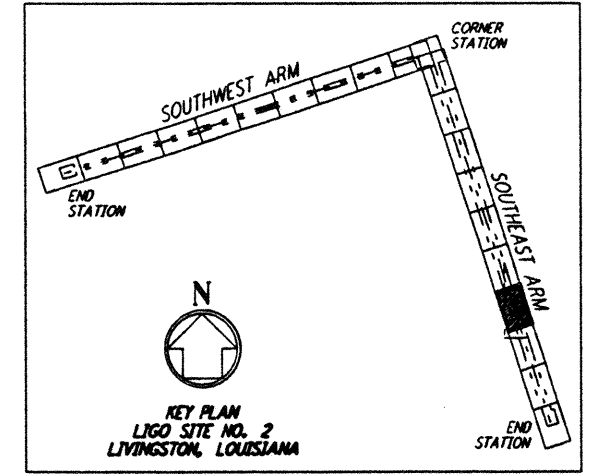


CURVE DATA				
Δ	RADIUS	LENGTH	TANGENT	
10	60°00'00"	25.00'	26.18'	14.43'

PROFILE
 SCALES: HORIZ: 1" = 50'
 VERT: 1" = 5'



PLAN
 SCALE: 1" = 50'



LIGO-0961742-00-0

NO.	DATE	APPROVED BY	DESCRIPTION OF REVISION
9			
8			
7			
6			
5			
4			
3			
2			
1	8/28/95	TD M	ISSUED FOR BID

NO.	DATE	APPROVED BY	ISSUED FOR
9			
8			
7			
6			
5			
4			
3			
2			
1	8/11/95	HRB	8/95
		MCP	8/28/95
		WJA	8/28/95

PARSONS
 100 WEST WALNUT STREET
 PASADENA, CALIFORNIA

LIGO
 CALIFORNIA INSTITUTE OF TECHNOLOGY
 MASSACHUSETTS INSTITUTE OF TECHNOLOGY

**LASER INTERFEROMETER
 GRAVITATIONAL-WAVE OBSERVATORY
 ROUGH GRADING - LIVINGSTON, LA**
 TITLE: ROUGH GRADING SOUTHEAST ARM PLAN AND PROFILE STA 84+00 TO STA 98+00
 AS NOTED PPI50969 8094
RG-C-037