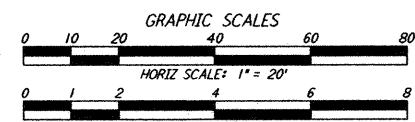
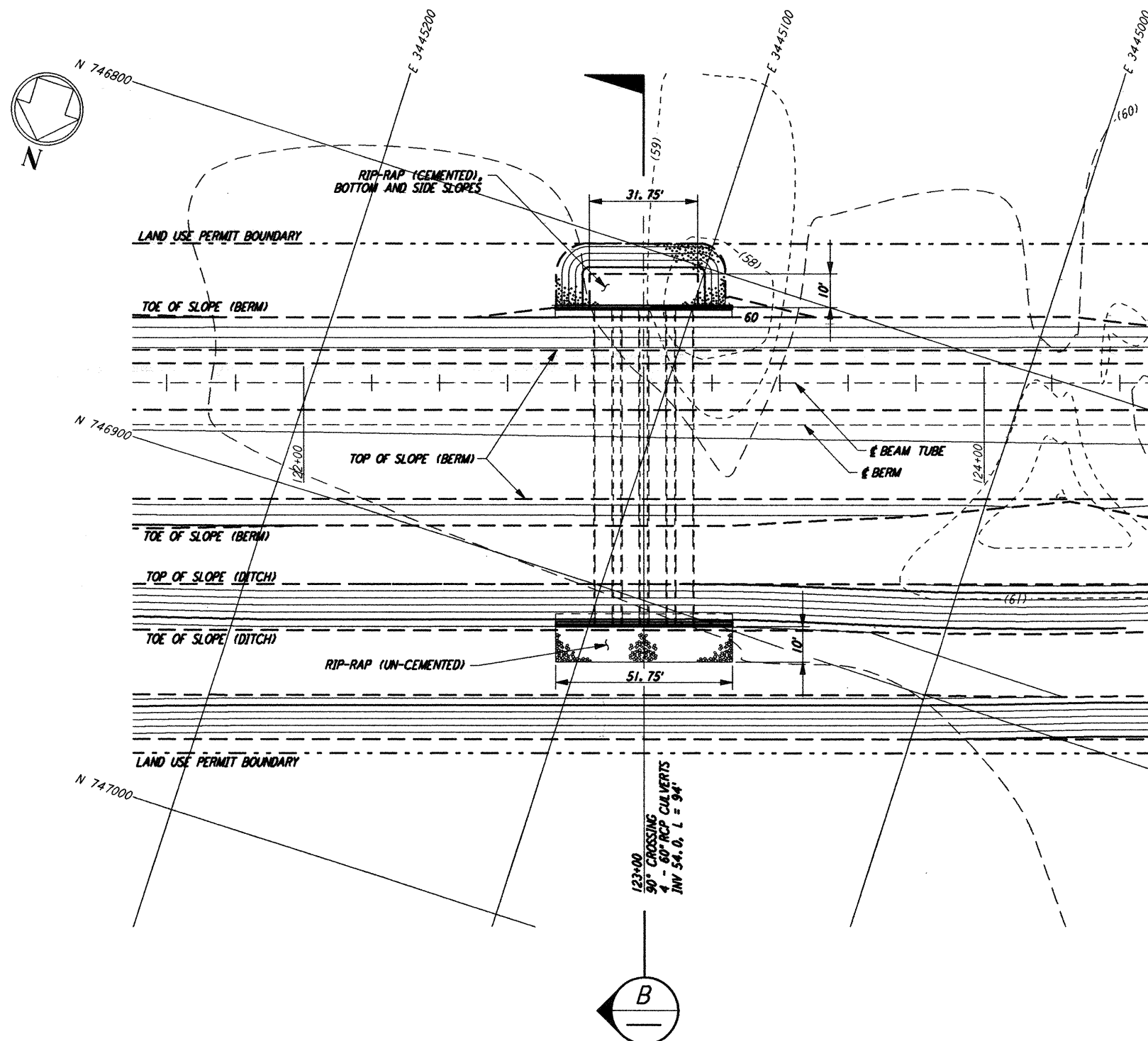
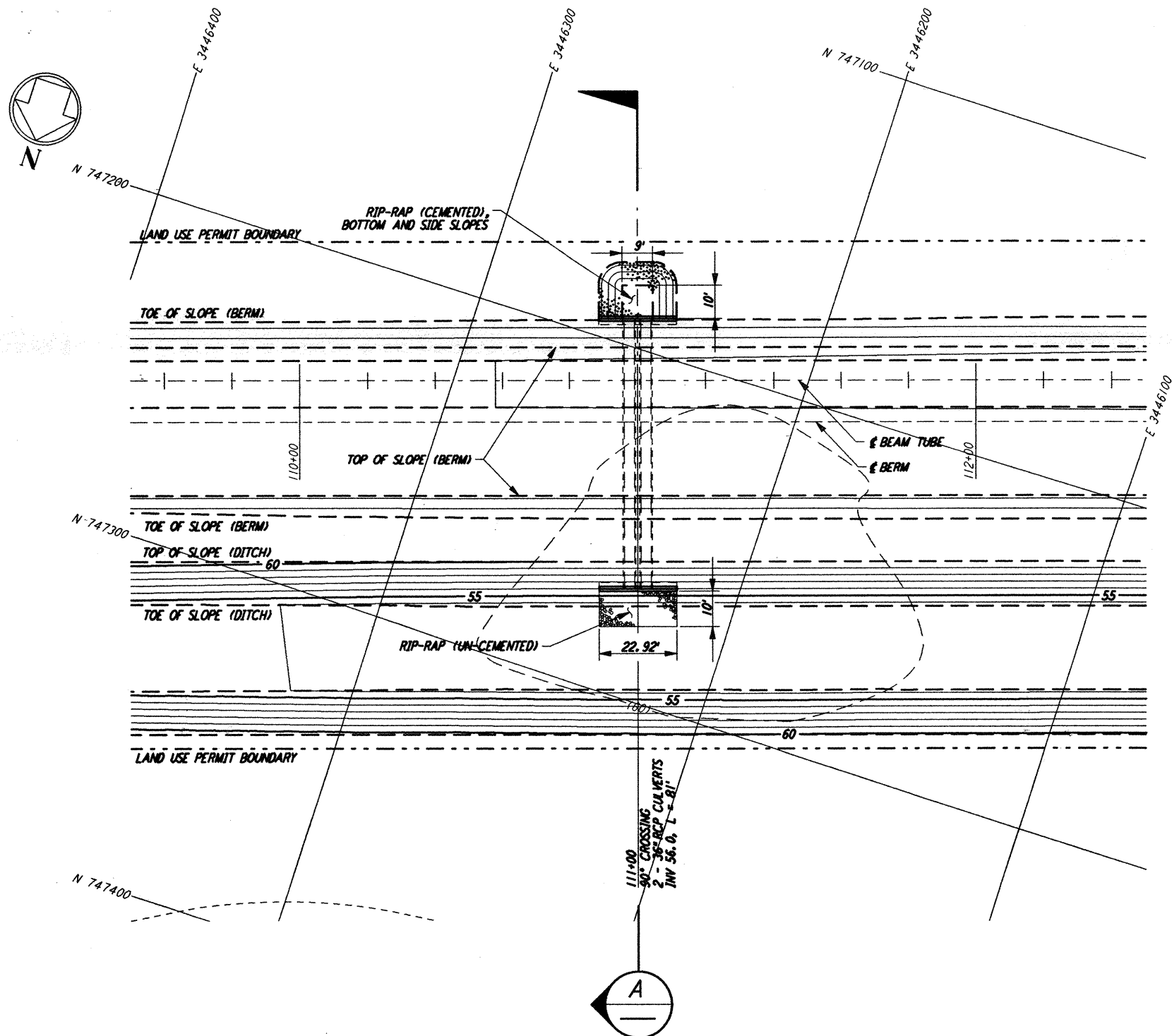
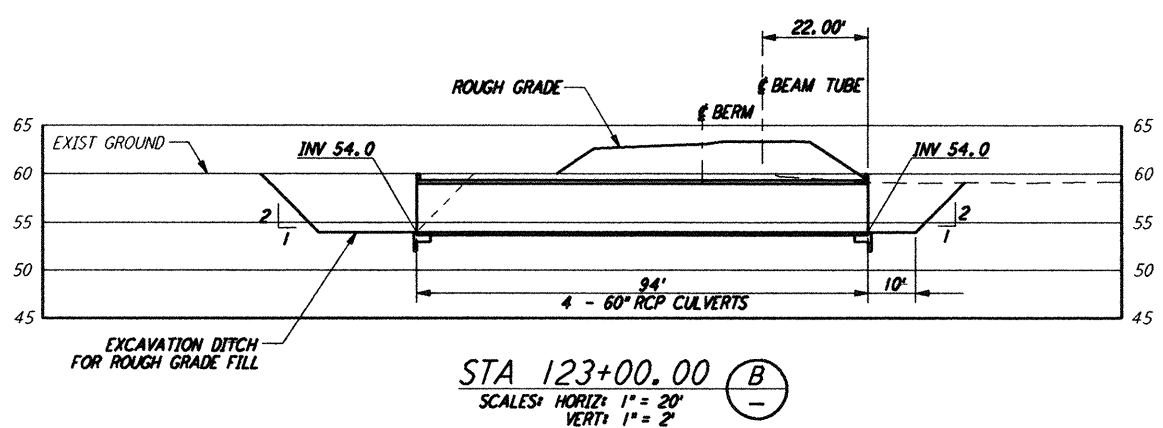
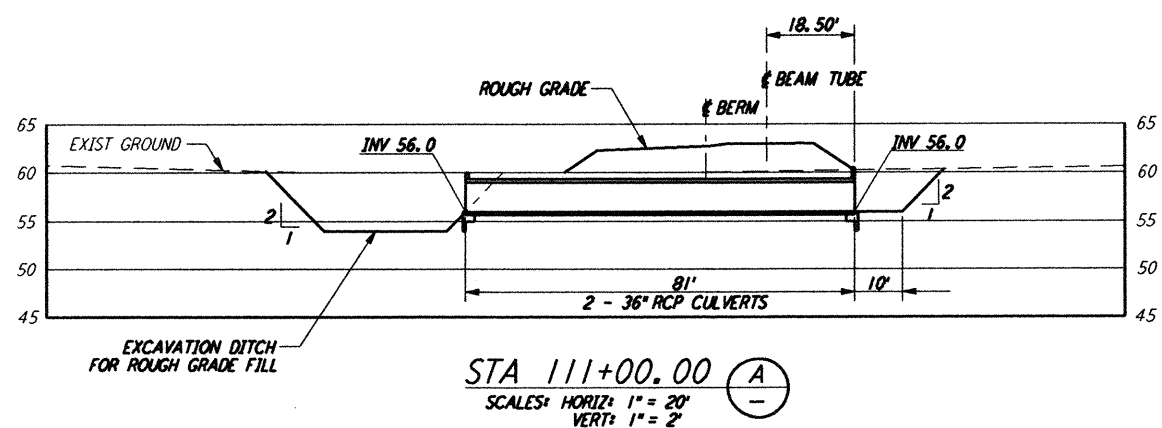


NOTES:
1. SEE SHEET RG-C-002 FOR GENERAL NOTES, LEGEND AND ABBREVIATIONS.



LIGO-0961735-A-0

NO.	DATE	APPRO BY	DESCRIPTION OF REVISION
9			
8			
7			
6			
5			
4			
3			
2			
1			

NO.	DATE	APPRO BY	ISSUED FOR
9			
8			
7			
6			
5			
4			
3			
2			
1	8/11/95	JLB	FINAL DESIGN REVIEW

DATE	BY	FOR
8/11/95	WRB	WRB
	MCP	MCP

PARSONS
 100 WEST WALNUT STREET
 PASADENA, CALIFORNIA

LIGO
 CALIFORNIA INSTITUTE OF TECHNOLOGY
 MASSACHUSETTS INSTITUTE OF TECHNOLOGY

LASER INTERFEROMETER
 GRAVITATIONAL-WAVE OBSERVATORY
 ROUGH GRADING - LIVINGSTON, LA

TITLE: ROUGH GRADING SOUTHWEST ARM CULVERT GENERAL ARRANGEMENTS
 AS NOTED: PP150969 8094
 SHEET NUMBER: RG-C-029

not be reproduced, copied, loaned, exhibited, or used in any other way, except by written consent from PARSONS to the borrower.

This document and the design it covers are the property of PARSONS. They are loaned only with the borrower's expressed written agreement that they will

Sun Aug 13 21:31:01 1995 s3-v18b2 k:\PLOTS\QUEUES\18B2\CE029.PRF