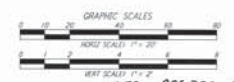
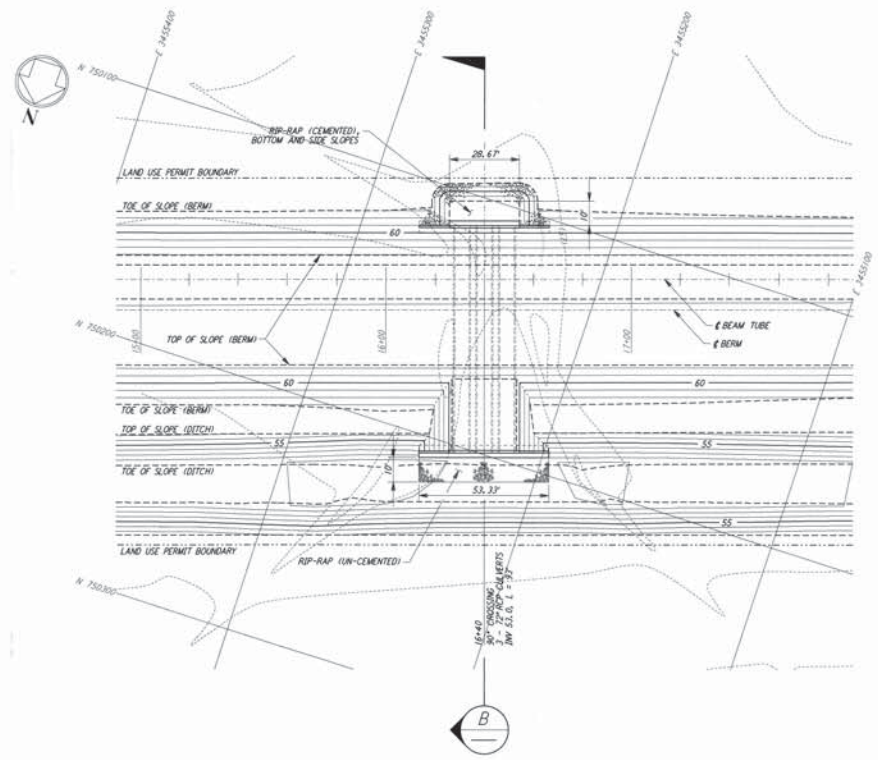
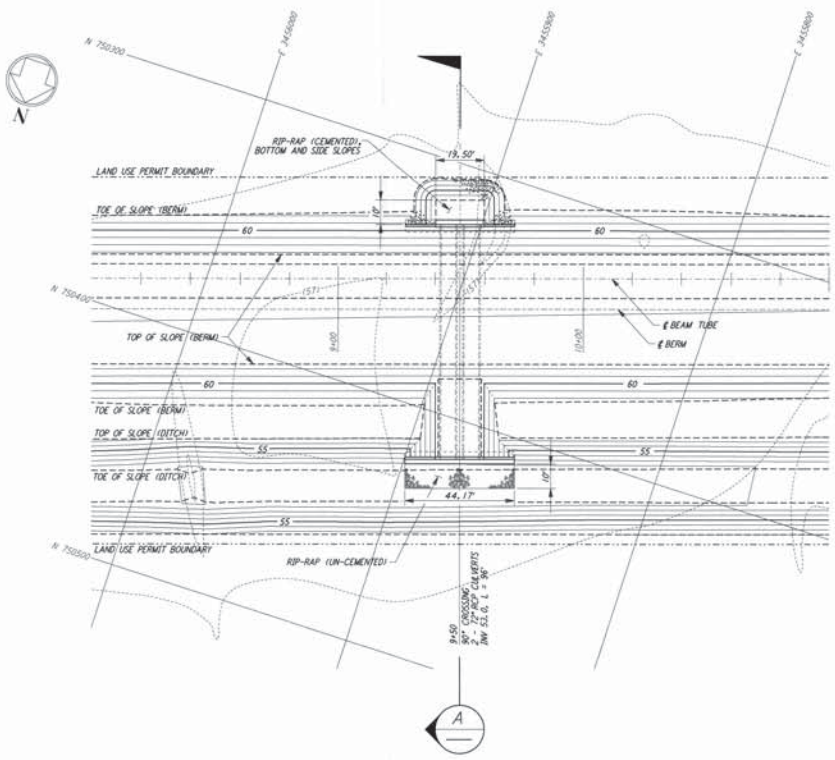
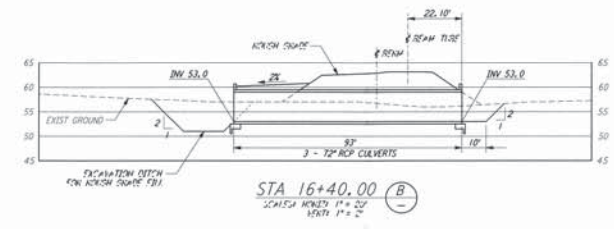
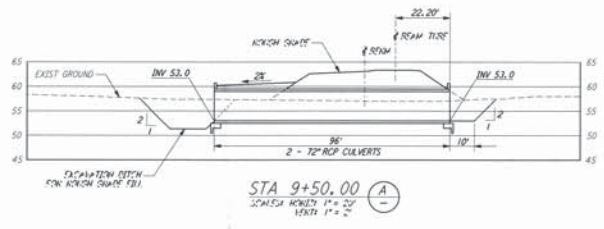


NOTES:
 1. SEE SHEET RG-C-002 FOR GENERAL NOTES, LEGEND AND ABBREVIATIONS.



This document and the design it covers are the property of Interoceanic, Inc. They are loaned only with the borrower's expressed written agreement that they will not be reproduced, copied, loaned, exhibited, or used in any other way, except by written consent from Interoceanic, Inc. to the borrower.

NO.	DATE	APPROVED BY	DESCRIPTION OF REVISION
9			
8			
7			
6			
5			
4			
3			
2			
1			

NO.	DATE	APPROVED BY	ISSUED FOR
1	8/11/95	JLB	FINAL DESIGN REVIEW

DATE	DRAWN	CHECKED	SECT. NO.	PROJ. MGR.	CLIENT
8/11/95	MWB	MGP			

PARSONS
 100 WEST WALNUT STREET
 PASADENA, CALIFORNIA

LIGO
 CALIFORNIA INSTITUTE OF TECHNOLOGY
 MASSACHUSETTS INSTITUTE OF TECHNOLOGY

**LASER INTERFEROMETER
 GRAVITATIONAL-WAVE OBSERVATORY
 ROUGH GRADING - LIVINGSTON, LA**

AS NOTED PPI50969 8094
RG-C-026