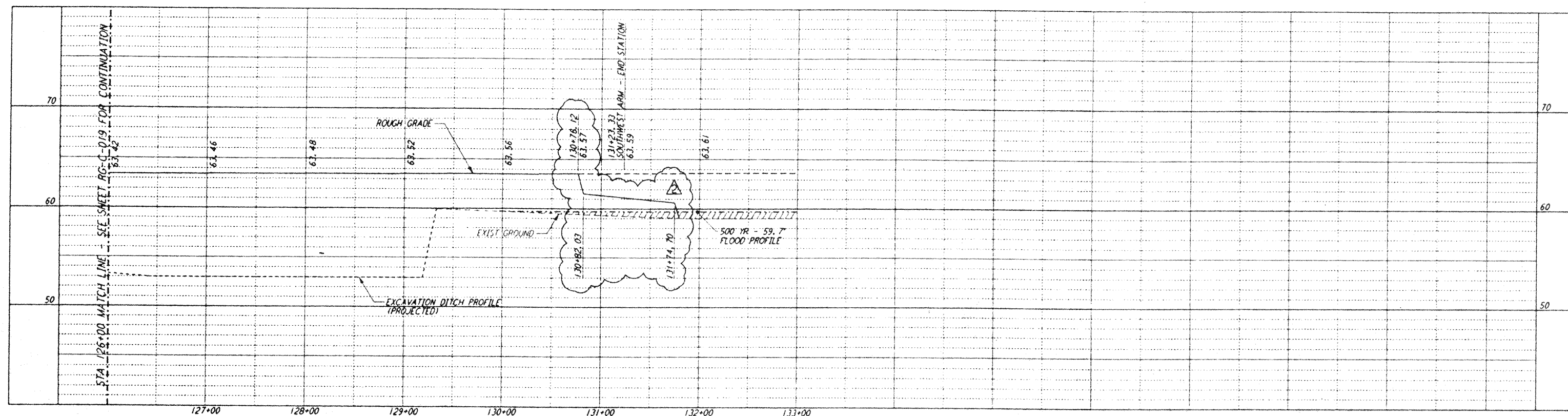


not be reproduced, copied, loaned, exhibited, or used in any other way, except by written consent from PARSONS to the borrower.

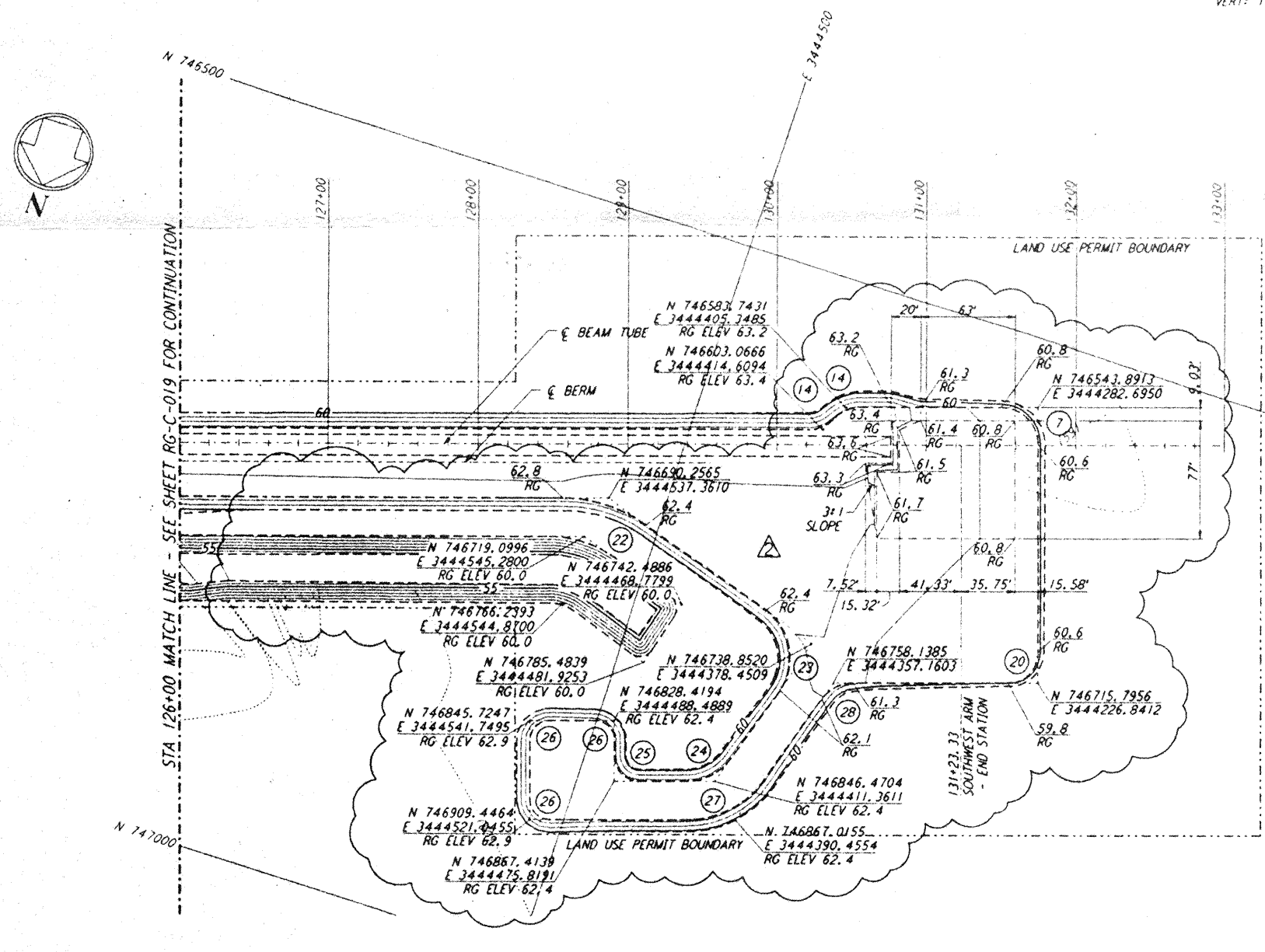
THIS DOCUMENT AND THE DESIGN IT CONTAINS ARE THE PROPERTY OF PARSONS. They are loaned only with the borrower's expressed written agreement that they will



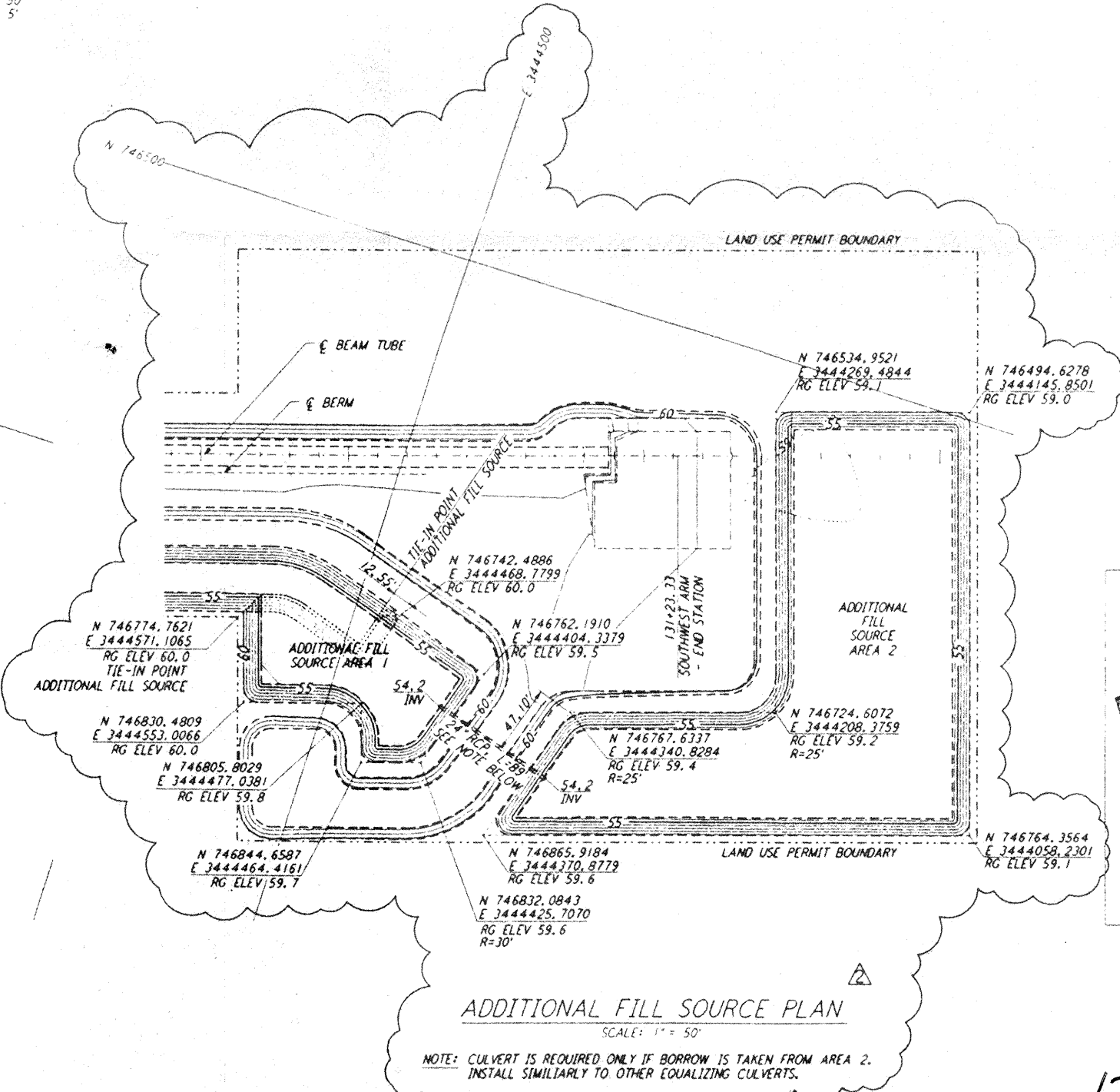
NOTES:
 1. SEE SHEET RG-C-002 FOR GENERAL NOTES, LEGEND AND ABBREVIATIONS.
 2. SEE SHEET RG-C-002 FOR LOCATION(S) OF SETTLEMENT PLATES AND LIMITS AND NOTE REGARDING COMPACTION WITHIN FUTURE BUILDING AREA.

CURVE DATA				
Δ	RADIUS	LENGTH	TANGENT	
7	90°00'00"	25.00'	39.27'	25.00'
14	46°23'52"	25.00'	20.24'	10.71'
20	90°00'00"	20.00'	31.42'	20.00'
22	35°00'00"	97.00'	59.25'	30.58'
23	90°00'00"	37.00'	58.12'	37.00'
24	55°00'00"	37.00'	26.52'	19.26'
25	90°00'00"	17.00'	26.10'	17.00'
26	90°00'00"	13.00'	20.42'	13.00'
27	55°00'00"	63.00'	60.48'	32.80'
28	55°00'00"	25.00'	24.00'	13.01'

PROFILE
 SCALES: HORIZ: 1" = 50'
 VERT: 1" = 5'

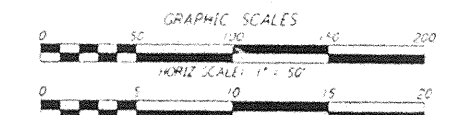
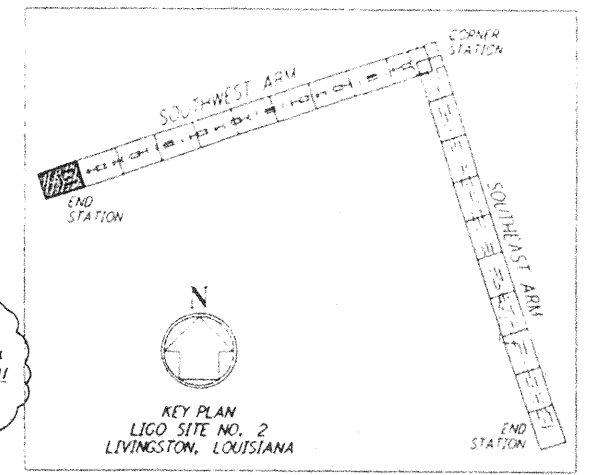


PLAN
 SCALE: 1" = 50'



ADDITIONAL FILL SOURCE PLAN
 SCALE: 1" = 50'

NOTE: CULVERT IS REQUIRED ONLY IF BORROW IS TAKEN FROM AREA 2. INSTALL SIMILARLY TO OTHER EQUALIZING CULVERTS.



LIGO-D961726-02-0

NO.	DATE	APPROVED BY	DESCRIPTION OF REVISION	NO.	DATE	APPROVED BY	DESCRIPTION OF REVISION
1	5/24/96	ADM	REVISED GRADING, ADDED FILL SOURCE, ADDED NOTE	1	8/28/95	Tom	ISSUED FOR BID
2	11/1/95	Tom	NO REVISIONS	2	11/1/95	Tom	ISSUED FOR CONSTRUCTION
3	5/24/96	ADM	CHANGE ORDER NO. 6	3	8/11/95	WRB	8/95
4				4		MCP	8/28/95
5				5		ENG	8/28/95
6				6		PROJ MGR	8/28/95
7				7			
8				8			
9				9			

PARSONS
 100 WEST WALNUT STREET
 PASADENA, CALIFORNIA

LIGO
 CALIFORNIA INSTITUTE OF TECHNOLOGY
 MASSACHUSETTS INSTITUTE OF TECHNOLOGY

LASER INTERFEROMETER
 GRAVITATIONAL-WAVE OBSERVATORY
 ROUGH GRADING - LIVINGSTON, LA

TITLE: ROUGH GRADING
 SOUTHWEST ARM
 PLAN AND PROFILE
 STA 126+00 TO STA 133+00

AS NOTED PPI50969 8094

RG-C-020