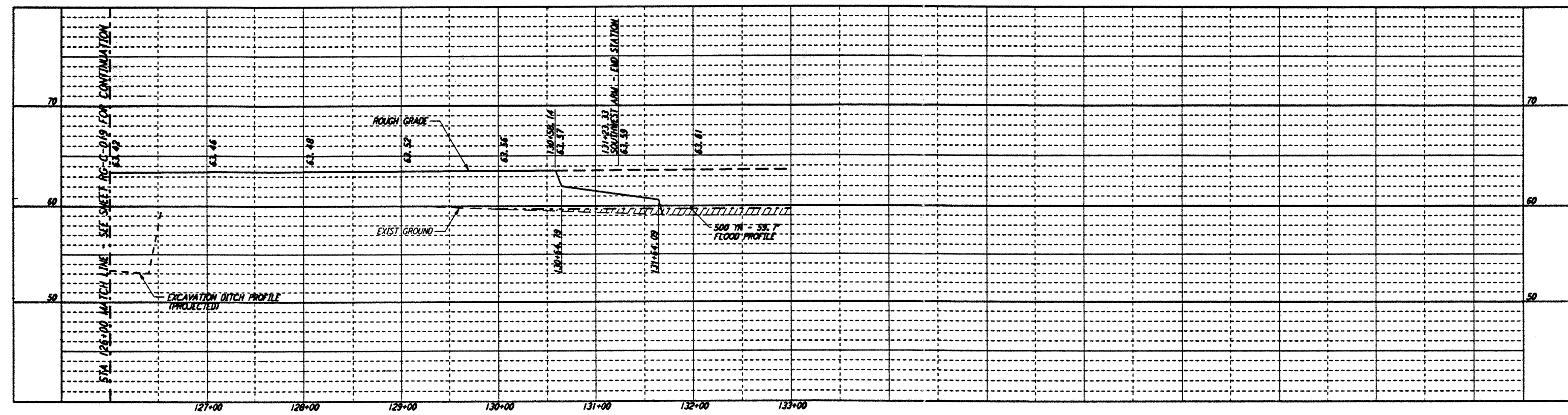
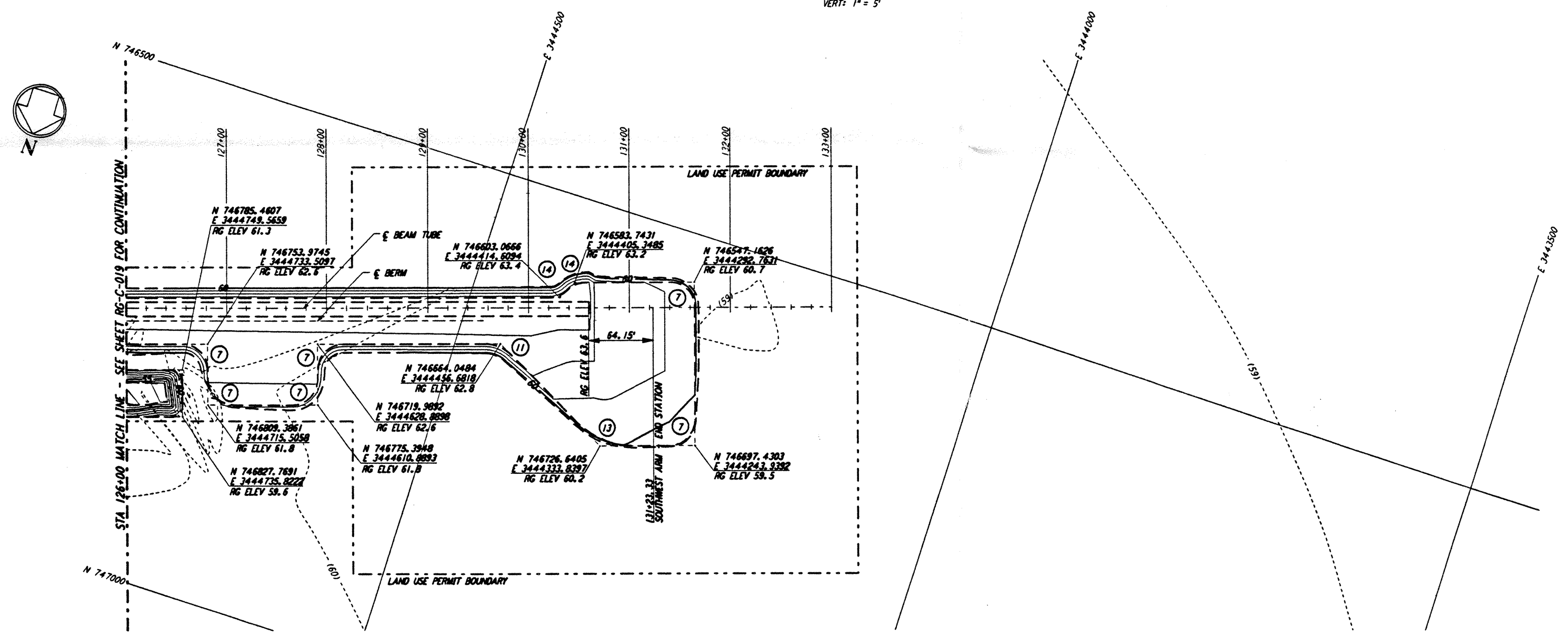


NOTES:
 1. SEE SHEET RG-C-002 FOR GENERAL NOTES, LEGEND AND ABBREVIATIONS.

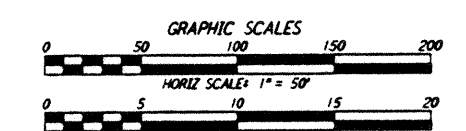
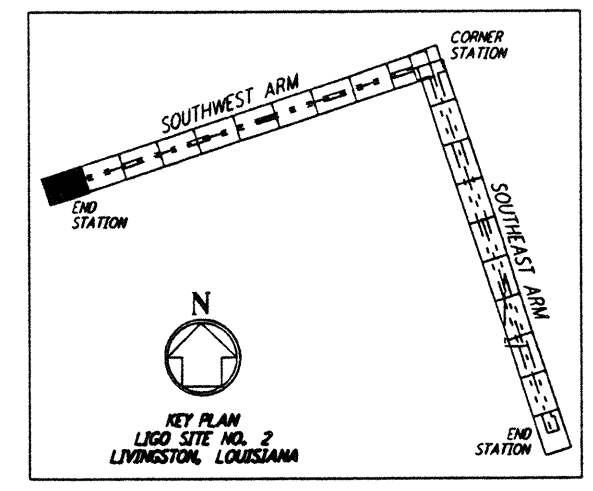


CURVE DATA				
Δ	RADIUS	LENGTH	TANGENT	
7	90°00'00"	25.00'	39.27'	25.00'
11	45°00'00"	39.00'	30.63'	16.16'
13	45°00'00"	81.00'	63.62'	33.55'
14	46°23'52"	25.00'	20.24'	10.71'

PROFILE
 SCALES: HORIZ: 1" = 50'
 VERT: 1" = 5'



PLAN
 SCALE: 1" = 50'



LIGO-0961726-00-0

NO.	DATE	APPROD BY	DESCRIPTION OF REVISION
9			
8			
7			
6			
5			
4			
3			
2			
1			

NO.	DATE	APPROD BY	ISSUED FOR
1	8/28/95	TCT/M	ISSUED FOR BID

DATE	BY
8/11/95	
8/9/95	WRB
8/8/95	MCP
8/7/95	
8/7/95	
8/7/95	

PARSONS
 100 WEST WALNUT STREET
 PASADENA, CALIFORNIA

LIGO
 CALIFORNIA INSTITUTE OF TECHNOLOGY
 MASSACHUSETTS INSTITUTE OF TECHNOLOGY

LASER INTERFEROMETER
 GRAVITATIONAL-WAVE OBSERVATORY
 ROUGH GRADING - LIVINGSTON, LA

SCALE: CONTRACT NUMBER: 8094
 AS NOTED PPI50969
 SHEET NUMBER: 8094

TITLE: ROUGH GRADING SOUTHWEST ARM PLAN AND PROFILE STA 126+00 TO STA 133+00
 SHEET TAG: **RG-C-020**

This document and the design it covers are the property of PARSONS. They are loaned only with the borrower's expressed written agreement that they will not be reproduced, copied, loaned, exhibited, or used in any other way, except by written consent from PARSONS to the borrower.

Fri Aug 25 13:23:32 1995 s3-v18b2 K:\PLOTS\QUEUES\18B2\XCE020A.PRF