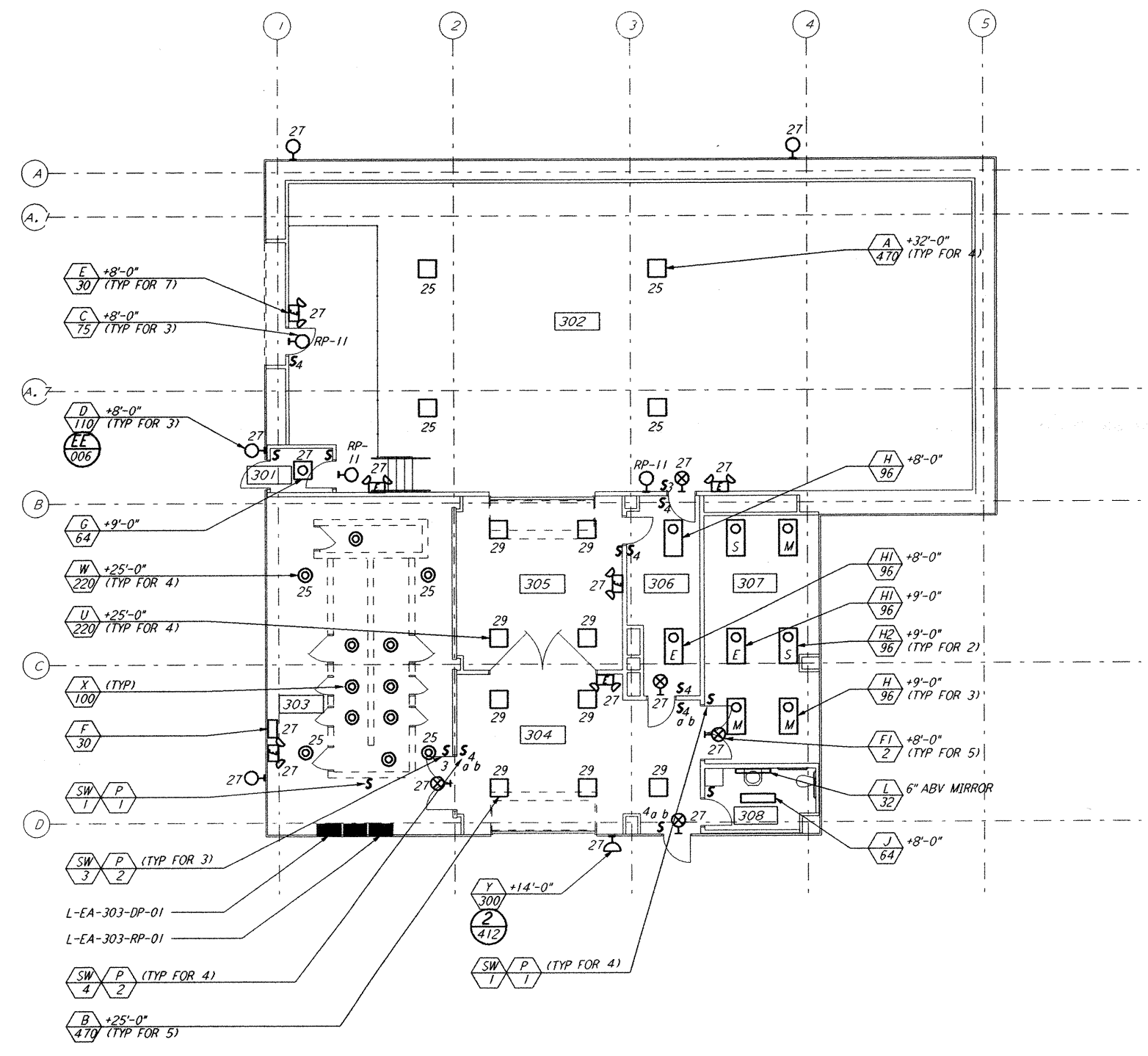
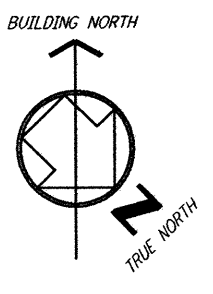
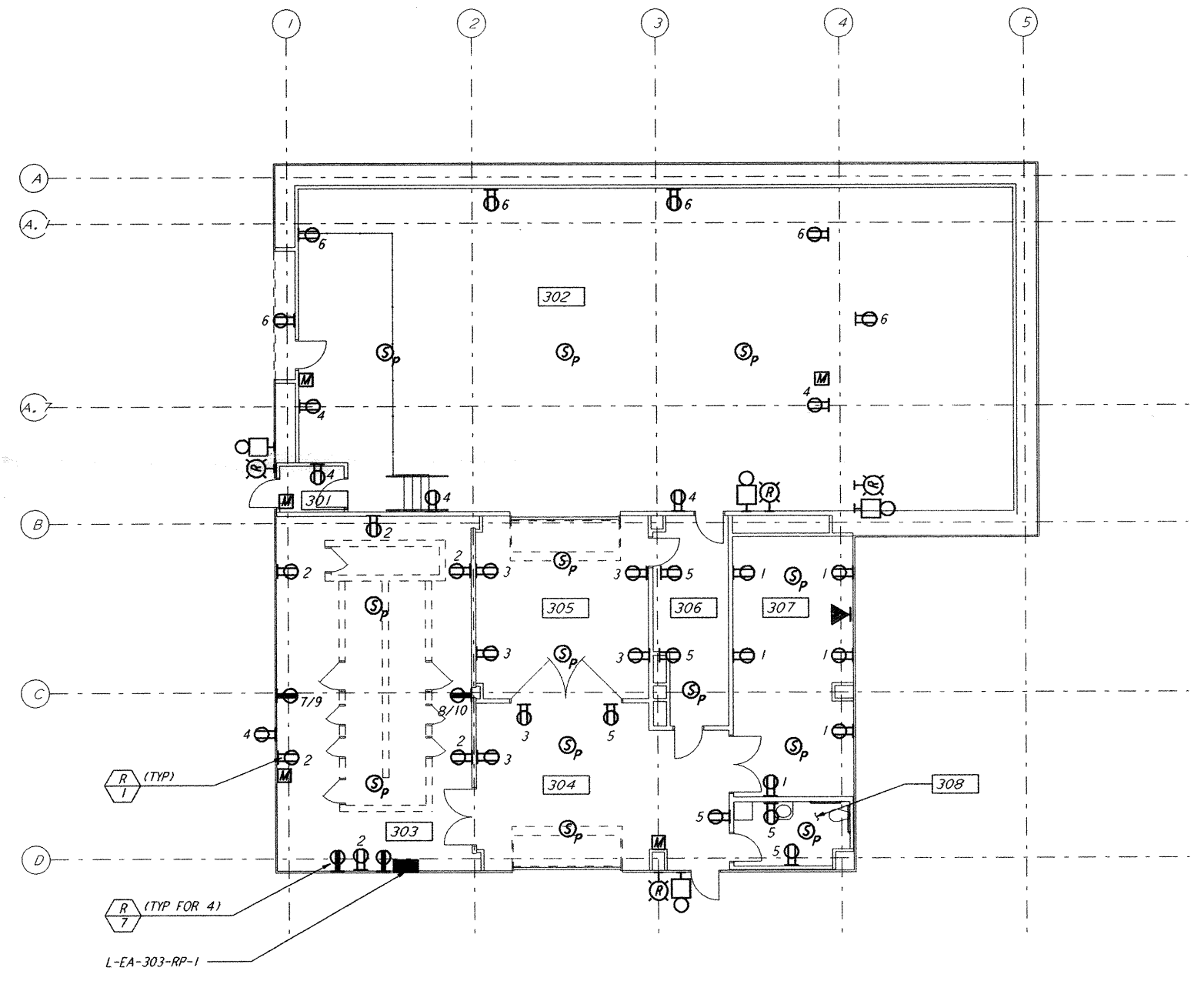


NOTES:

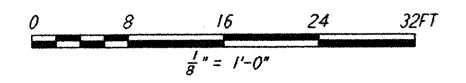
- FOR GENERAL NOTES, AND LEGEND SEE THE FOLLOWING DRAWINGS:
 RECEPTACLES = LA-E-101
 LIGHTING = LA-E-102
 FIRE ALARM = LA-E-110
- FOR RECEPTACLE LEGEND SEE DWG. LA-E-106.



LIGHTING PLAN



POWER, COMMUNICATIONS AND FIRE DETECTION PLAN



LIGO-D961706-A-0

LASER INTERFEROMETER
 GRAVITATIONAL-WAVE OBSERVATORY
 SITE NO.2 - LIVINGSTON, LOUISIANA

ELECTRICAL
 END STATION POWER
 LIGHTING, FIRE DET AND
 COMMUNICATION PLAN

AS NOTED
 SHEET NUMBER
LA-E-301

CONTRACT NUMBER
 PP150969

PROJECT NUMBER
 8094

REVISIONS

NO.	DATE	APRD BY	DESCRIPTION OF REVISION
9			
8			
7			
6			
5			
4			
3			
2			
1			

NO.	DATE	APRD BY	ISSUED FOR
A	10-31-95	TDM	PRELIMINARY DESIGN REVIEW

DATE	10-31-95
DRAWN	J. G.
CHECKED	
ENGINEER	
PROJ MGR	

100 WEST WALNUT STREET
 PASADENA, CALIFORNIA

CALIFORNIA INSTITUTE OF TECHNOLOGY
 MASSACHUSETTS INSTITUTE OF TECHNOLOGY

This document and the design it covers are the property of PARSONS. They are loaned only with the borrower's expressed written agreement that they will not be reproduced, copied, loaned, exhibited, or used in any other way, except by written consent from PARSONS to the borrower.

Mon Oct 30 23:52:23 1995 s3-v18b2 J:\PLOTS\QUEUES\18B2\EE301.PR