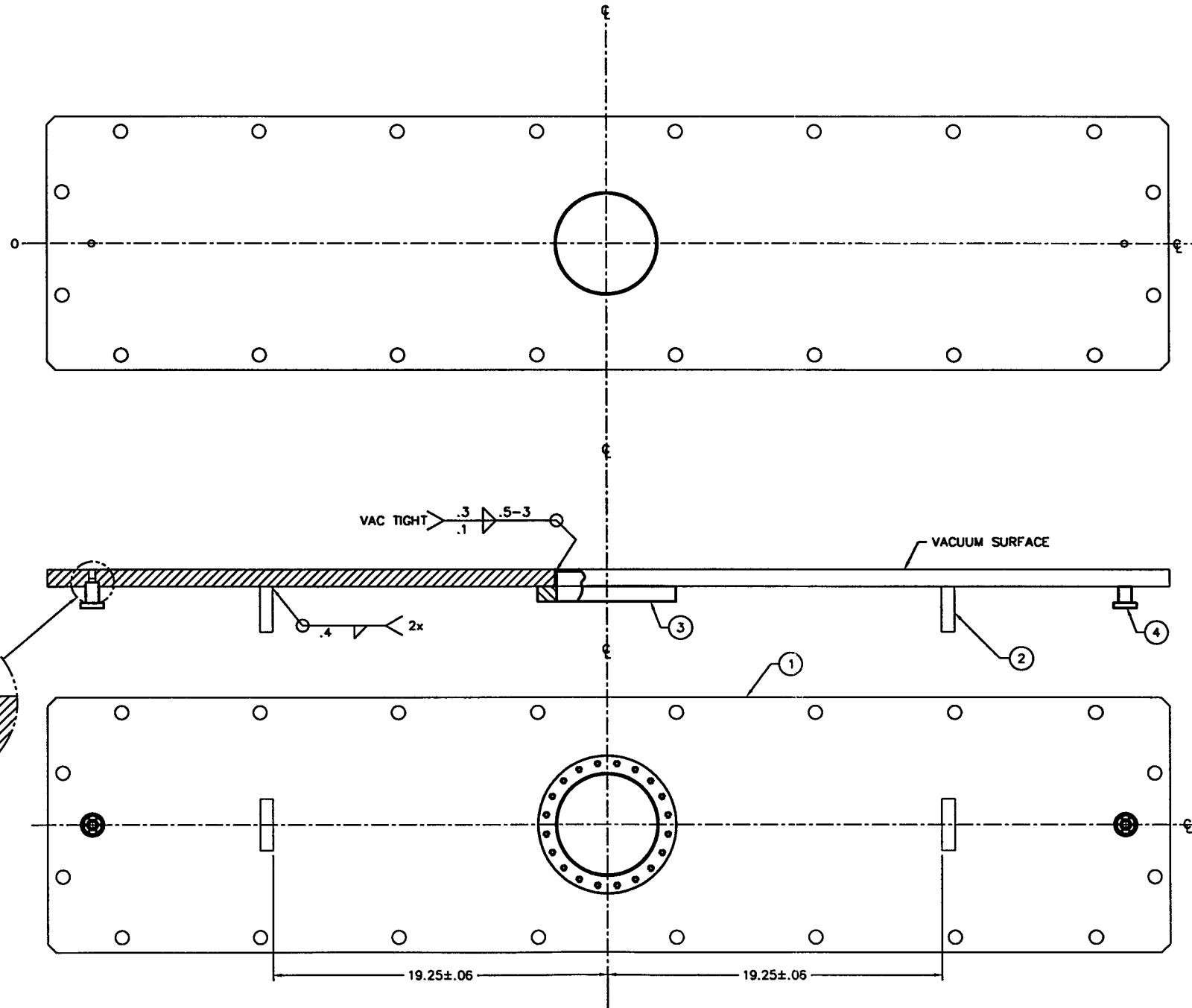


REV	DESCRIPTION	APP'D	DATE
A	RELEASED		
B	MIN CFF WAS VCR FITTING, ADD PUMPOUT SLOTS		
C	REMOVED O-RING GROOVE DETAIL, FIXED NOTE AND MATL SPEC		
D	REMOVED DIMENSIONS, CHANGED TITLE	A.S.	10/11/96
E	ITEM 4 WAS ROTATABLE, NOW NON-ROTATABLE.	A.S.	11-11-96



DEC 19 1996

PSI DWG # V049-8-162  
LIGO-D961699-E-V

ITEM	QTY	PART NO.	DESCRIPTION
4	2	133-075-LF	KA&N NONROTATABLE CF HALF NIPPLE
3	1	A103800	MODIFIED HALF NIPPLE, WELD'T, BONNET PLATE
2	2	14829-10	LIFTING EYE
1	1	D103805	BONNET PLATE

PART LIST		MATERIAL SPECIFICATION	
<small>UNLESS OTHERWISE SPECIFIED  DIMENSIONS ARE IN INCHES  TOLERANCES ARE:  DECIMALS ANGLES FINISH  JOB ± .01 ± 10' 12'  JOB ± .005  11, 12, 1 WITHIN .05  UNPROTECTED FLEETED SURF  BREAK EDGES 510 ± 45°  REMOVE ALL BURRS</small>		<small>CONTRACT OR SALES ORDER NO.</small>  <small>APPROL W/</small> 290# <small>APPROVALS</small> DATE <small>DRAWER</small> <small>CHECKER</small> <small>ENGINEER</small> ZH 1-17-96	
<small>THIRD ANGLE PROJECTION</small> 		<b>GNB Corporation</b> <small>SCIENTIFIC AND INDUSTRIAL EQUIPMENT</small> 30871 San Ramon Court HAYWARD, CALIFORNIA 94544 (510) 441-1900 FAX: (510) 441-0938	
<small>DO NOT SCALE DRAWING</small> <small>USED ON</small>		<small>TITLE</small> <b>WELDMENT, BONNET PLATE</b> LIGO G44E, G44P <small>DWG. NO.</small> 103212 <small>SCALE:</small> NONE <small>SHEET</small> 1 OF 1	

- NOTES:
- ① VACUUM SEALING SURFACE
  - ② FINAL CLEANING TO MEET GNB SPEC. PER UHV