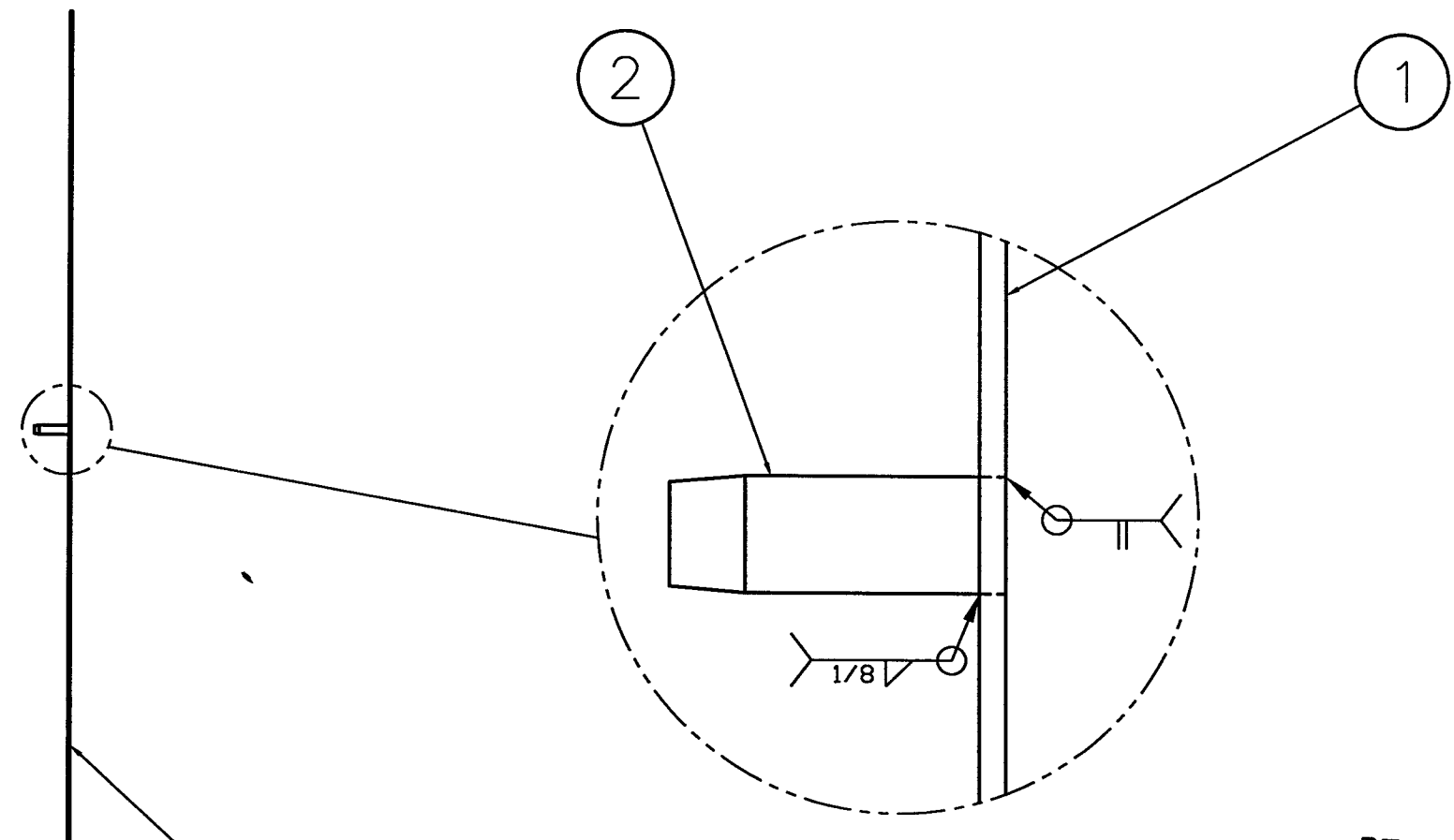
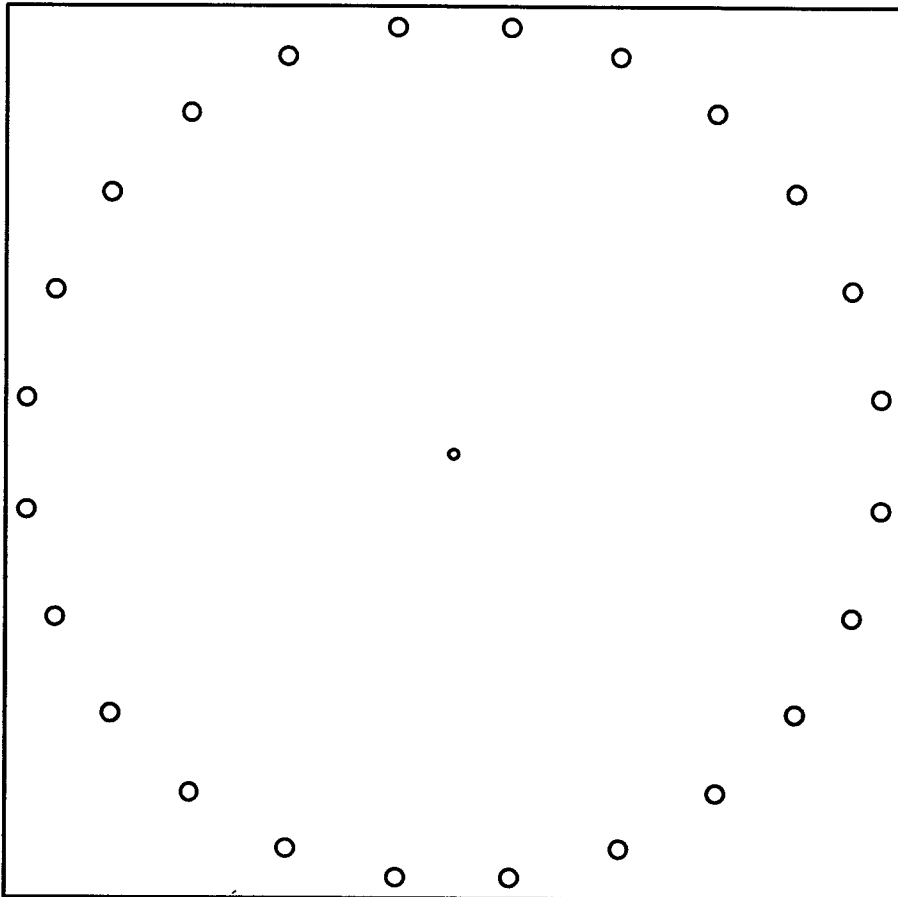


REV. A
DWG. NO. 103759

REVISIONS			
REV.	DESCRIPTION	APPROVED	DATE
A	RELEASED	AJL	11-5-96


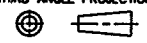


(SMOOTHER FACE OF SHEETMETAL)

DEC 19 1996

PSI DWG # V049-8-581
WGO-D961696-A-V

ITEM	QTY.	PART NO.	DESCRIPTION
2	1	A103761	MODIFIED NIPPLE
1	1	B103760	SHEET, SHIPPING COVER

PART LIST		MATERIAL SPECIFICATION:	
<small>UNLESS OTHERWISE SPECIFIED DIMENSIONS ARE IN INCHES TOLERANCES ARE: DECIMALS ANGLES FINISH .XX ± .01 ± 1° 32/ .XXX ± .005</small>		 30971 San Benito Ct. HAYWARD, CALIFORNIA 94544 (510) 441-1900 FAX: (510) 441-0939	
		TITLE WELDMENT, SHIPPING COVER	
<small>CONTRACT OR SALES ORDER NO.</small> _____		<small>APPROX. WT.</small> _____	
<small>UNSPECIFIED FILLETS: R.015 BREAK EDGES .010 ± 45° REMOVE ALL BURRS</small>		<small>APPROVALS</small> _____ DATE _____	
<small>THIRD ANGLE PROJECTION</small> 		<small>DRAFTER</small> AJL 11-5-96	
<small>DO NOT SCALE DRAWING</small>		<small>CHECKER</small> _____	
<small>CADD FILE NAME</small> B103759A		<small>ENGINEER</small> _____	
B103758 USED ON		B DWG. NO. 103759 SCALE: NONE SHEET 1 OF 1	

REV. A
DWG. NO. 103759

REV. A
DWG. NO. 103759