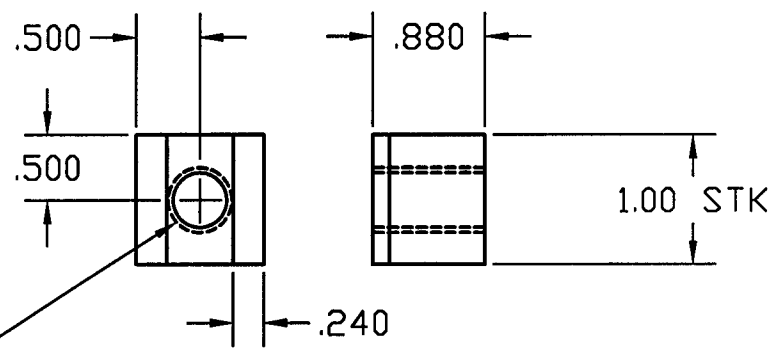
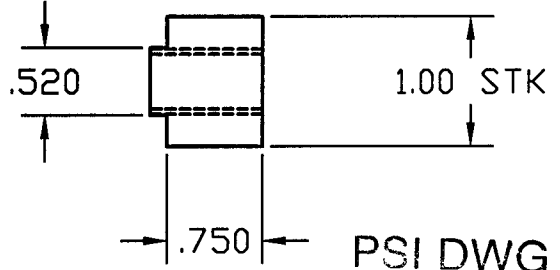


REVISIONS			
REV.	DESCRIPTION	APPROVED	DATE
A	RELEASED	AJL	11-15-96



1/2-13 UNC-2A THRU



DEC 19 1996

PSI DWG # V049-8-522

ITEM	QTY.	PART NO.	DESCRIPTION
			1" SQUARE BAR
PART LIST			MATERIAL SPECIFICATION: 304 SST
<small>UNLESS OTHERWISE SPECIFIED DIMENSIONS ARE IN INCHES TOLERANCES ARE: DECIMALS ANGLES FINISH .XX ± .01 ± 1° 32/ .XXX ± .005</small>		<small>CONTRACT OR SALES ORDER NO.</small>	
<small>UNSPECIFIED FILLETS: R.015 BREAK EDGES .010 ± 45° REMOVE ALL BURRS</small>		<small>APPROX. WT.</small>	
<small>THIRD ANGLE PROJECTION</small>		<small>APPROVALS</small>	
<small>DO NOT SCALE DRAWING</small>		<small>DATE</small>	
<small>CADD FILE NAME</small>		<small>DRAWER</small>	
<small>USED ON</small>		<small>CHECKER</small>	
		<small>ENGINEER</small>	
		<small>TITLE</small>	
		<small>DWG. NO.</small>	
		<small>SCALE:</small>	
		<small>SHEET 1 OF 1</small>	
		<small>REV. A</small>	

**GNB** Corporation  
SCIENTIFIC AND INDUSTRIAL EQUIPMENT

30971 San Benito Ct.  
HAYWARD, CALIFORNIA 94544  
(510) 441-1900 FAX: (510) 441-0939

BLOCK, LOCK YOKE  
G44, G48

103827

NONE

SHEET 1 OF 1

REV. A  
DWG. NO. 103827

L190-D961638-A-V