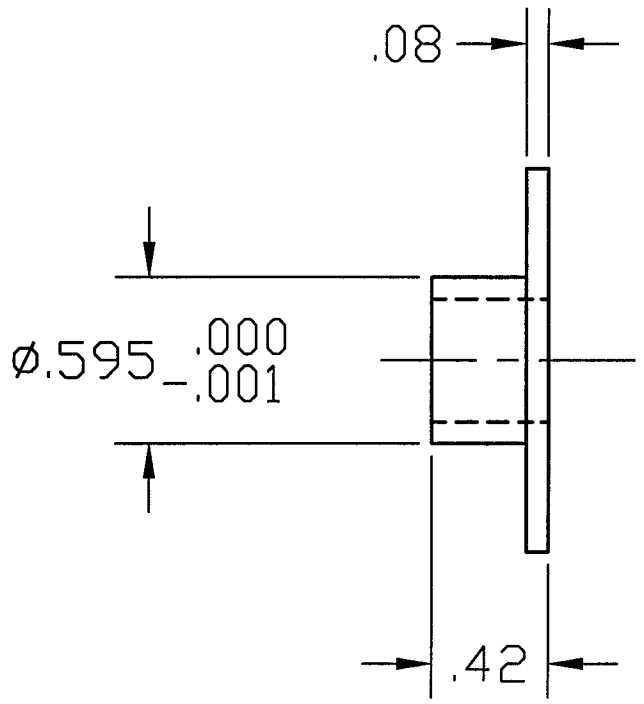
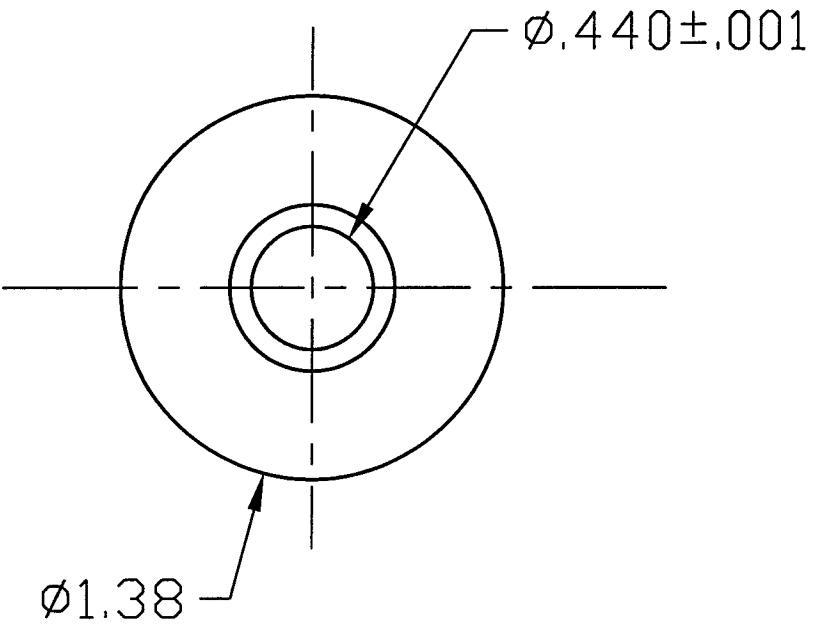


REVISIONS			
REV.	DESCRIPTION	APPROVED	DATE
A	RELEASED	AJL	10/16/96



DEC 19 1996

FBI DWG # V049-8-509

REV. A
A DWG. NO. 103753

ITEM	QTY.	PART NO.	DESCRIPTION
PART LIST			MATERIAL SPECIFICATION: BRASS
<small>UNLESS OTHERWISE SPECIFIED DIMENSIONS ARE IN INCHES TOLERANCES ARE: DECIMALS ANGLES FINISH .XX ± .01 ± 1° 32/ .XXX ± .005</small>		<small>CONTRACT OR SALES ORDER NO.</small> <small>APPROX. WT.</small> <small>APPROVALS</small>	
<small>UNSPECIFIED FILLETS: R.015 BREAK EDGES .010 ± 45° REMOVE ALL BURRS</small>		<small>DATE</small>	
<small>THIRD ANGLE PROJECTION</small> 		<small>DRAFTER</small> AJL	<small>DATE</small> 10/16/96
<small>DO NOT SCALE DRAWING</small>		<small>CHECKER</small>	<small>ENGINEER</small>
C103746		A103753A	<small>TITLE</small> BUSHING, CARRIAGE LOCK LIGO G44, G48
USED ON	<small>CADD FILE NAME</small>		<small>DWG. NO.</small> 103753 <small>SCALE:</small> NONE <small>SHEET</small> 1 <small>OF</small> 1 <small>REV.</small> A

LIG0-D961625-A-V