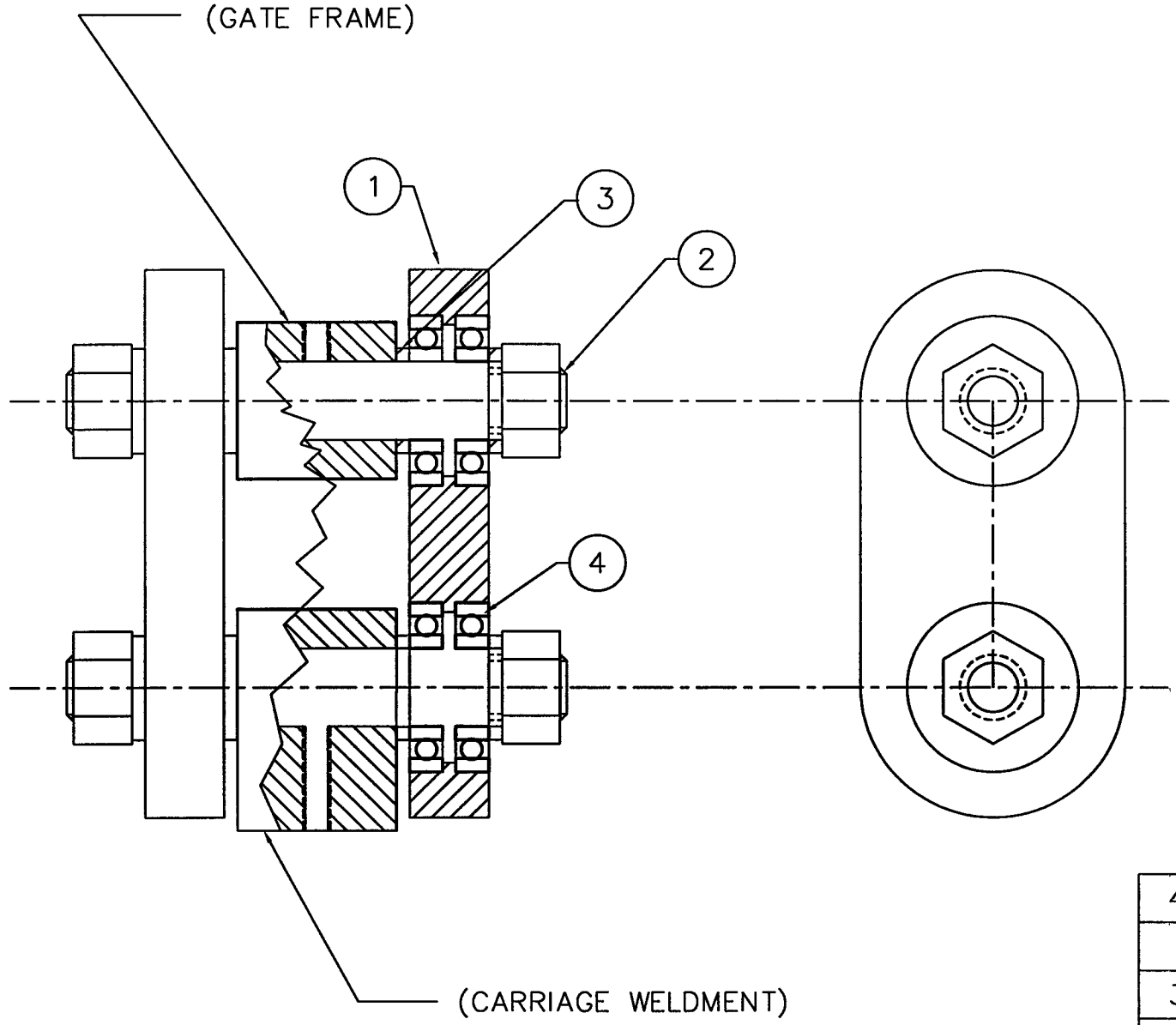


REVISIONS			
REV.	DESCRIPTION	APPROVED	DATE
A	RELEASED	AJL	10-31-96



DEC 19 1996

PSI DWG # V049-8-197
LIG0-D961607-A-V

ITEM	QTY.	PART NO.	DESCRIPTION
4	8	R12	(AST) PRECISION IN SERIES OPEN BEARING, .750 BORE, 1.625 OD, .3125 WD
3	4	A103252-02	WASHER
2	2	A103235	LINK PIN ASSEMBLY
1	2	A103241	LINK

PART LIST		MATERIAL SPECIFICATION: 304 SST	
<small>UNLESS OTHERWISE SPECIFIED DIMENSIONS ARE IN INCHES TOLERANCES ARE: DECIMALS ANGLES FINISH .XX ± .01 ± 10' 32/ .XXX ± .005</small>		GNB Corporation SCIENTIFIC AND INDUSTRIAL EQUIPMENT 30971 San Benito Ct. HAYWARD, CALIFORNIA 94544 (510) 441-1900 FAX: (510) 441-0939	
<small>UNSPECIFIED FILETS: R.015 BREAK EDGES .010 ± .45° REMOVE ALL BURRS</small>		TITLE: LINK ASSEMBLY G44, G48	
<small>THIRD ANGLE PROJECTION</small> 		DRAFTER: AJL DATE: 10-31-96 CHECKER: _____ ENGINEER: _____	
<small>DO NOT SCALE DRAWING</small>		DWG. NO. 103254	
CADD FILE NAME: B103254A		SCALE: NONE SHEET 1 OF 1	

C103255
USED ON