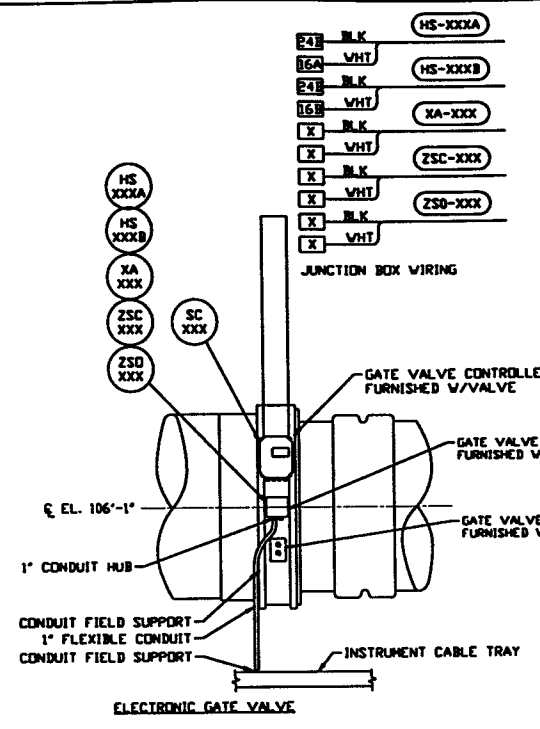


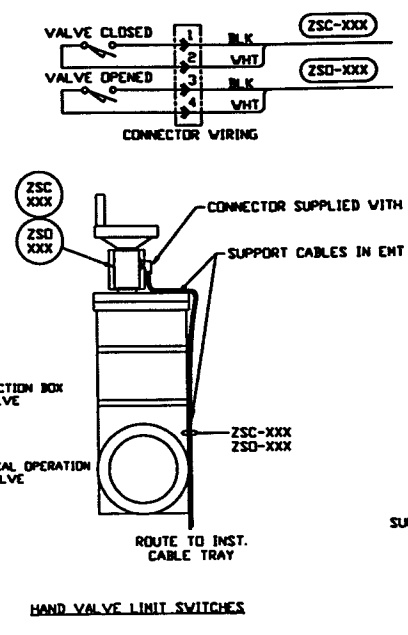
DETAIL 1 REF. SCALE: 1" = 1'-0"

| | | |
|------------|------------|------------|
| V049-3-111 | V049-3-203 | V049-3-611 |
| V049-3-112 | V049-3-203 | V049-3-612 |
| V049-3-113 | V049-3-403 | V049-3-613 |
| V049-3-114 | V049-3-503 | V049-3-703 |
| | | V049-3-803 |



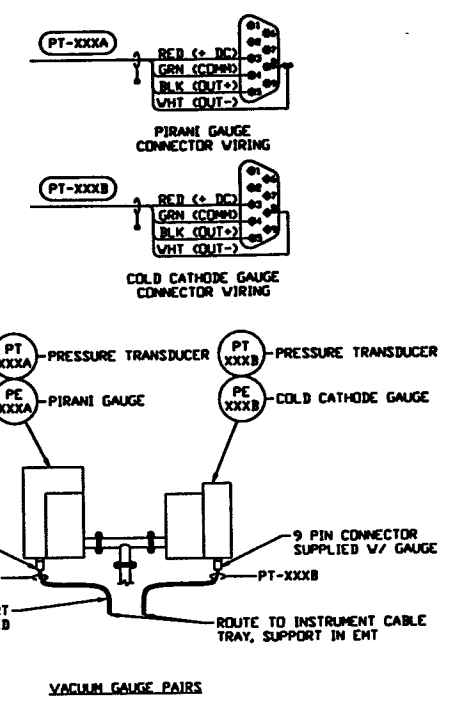
DETAIL 2 REF. SCALE: 1" = 1'-0"

| | | |
|------------|------------|------------|
| V049-3-111 | V049-3-303 | V049-3-611 |
| V049-3-114 | V049-3-403 | V049-3-703 |
| V049-3-203 | V049-3-503 | V049-3-803 |



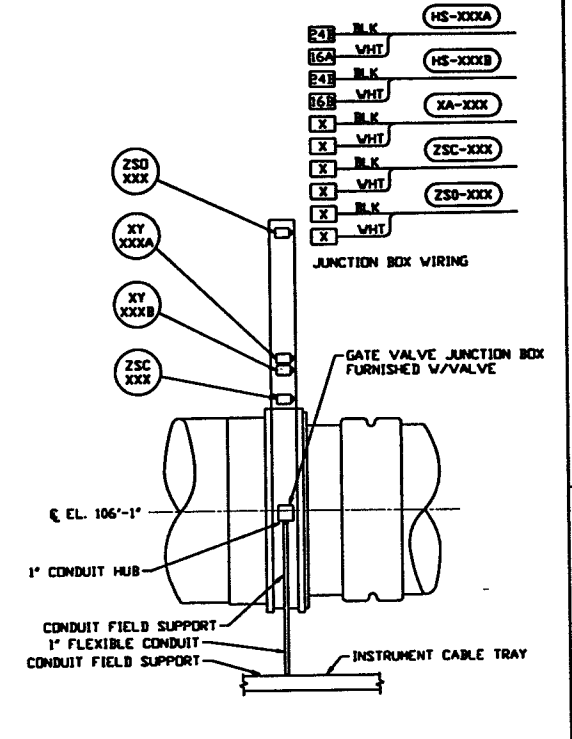
DETAIL 3 REF. SCALE: 1" = 1'-0"

| | | |
|------------|------------|------------|
| V049-3-111 | V049-3-203 | V049-3-611 |
| V049-3-112 | V049-3-303 | V049-3-612 |
| V049-3-113 | V049-3-403 | V049-3-613 |
| V049-3-114 | V049-3-503 | V049-3-703 |
| | | V049-3-803 |



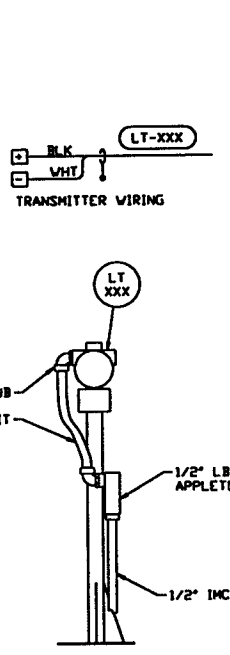
DETAIL 4 REF. SCALE: 1" = 1'-0"

| | | |
|------------|------------|------------|
| V049-3-111 | V049-3-203 | V049-3-611 |
| V049-3-112 | V049-3-303 | V049-3-612 |
| V049-3-113 | V049-3-403 | V049-3-613 |
| V049-3-114 | V049-3-503 | V049-3-703 |
| | | V049-3-803 |



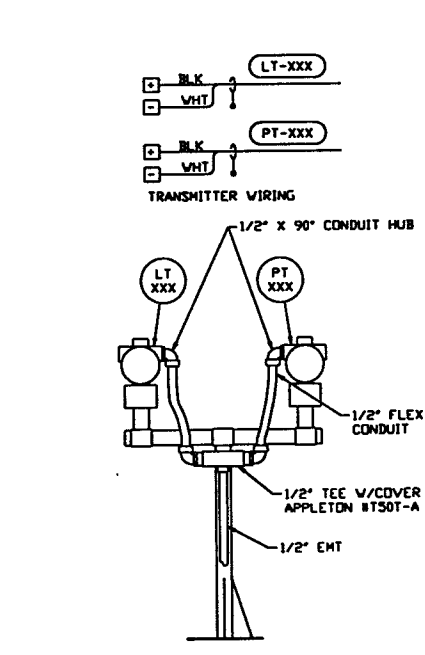
DETAIL 5 REF. SCALE: 1" = 1'-0"

| | |
|------------|------------|
| V049-3-112 | V049-3-612 |
| V049-3-113 | V049-3-613 |



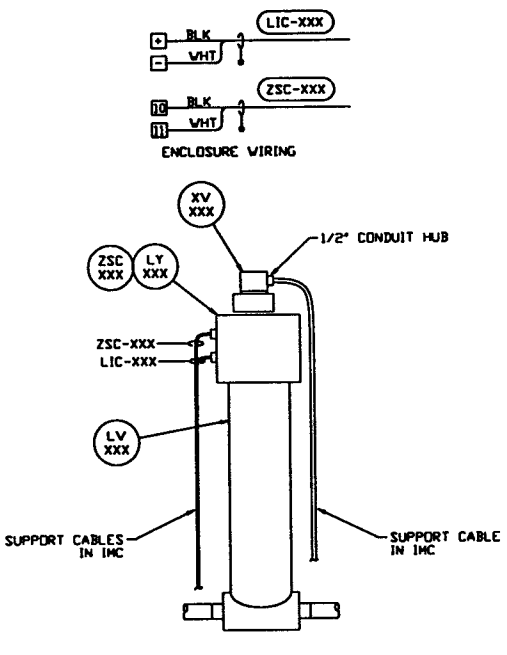
DETAIL 6 REF. SCALE: 1" = 1'-0"

| | | |
|------------|------------|------------|
| V049-3-112 | V049-3-303 | V049-3-612 |
| V049-3-113 | V049-3-403 | V049-3-613 |
| V049-3-203 | V049-3-503 | V049-3-703 |
| | | V049-3-803 |



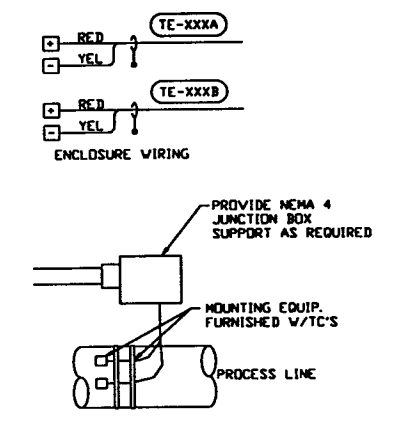
DETAIL 7 REF. SCALE: 1" = 1'-0"

| | | |
|------------|------------|------------|
| V049-3-112 | V049-3-303 | V049-3-612 |
| V049-3-113 | V049-3-403 | V049-3-613 |
| V049-3-203 | V049-3-503 | V049-3-703 |
| | | V049-3-803 |



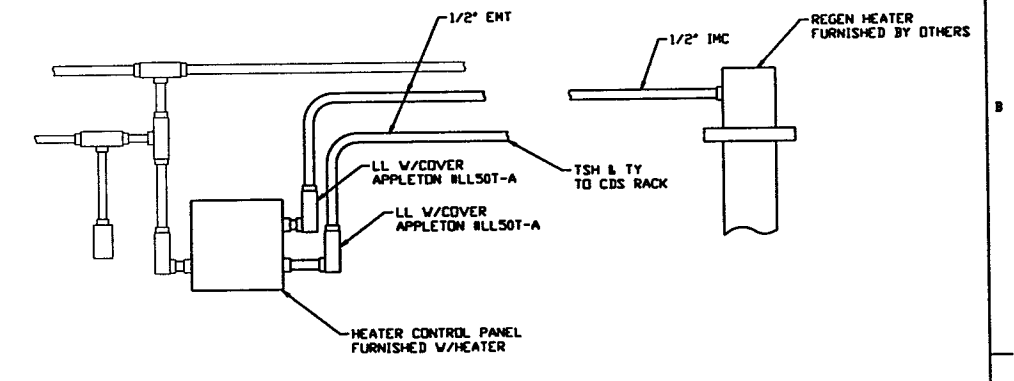
DETAIL 8 REF. SCALE: 1" = 6"

| | | |
|------------|------------|------------|
| V049-3-112 | V049-3-303 | V049-3-612 |
| V049-3-113 | V049-3-403 | V049-3-613 |
| V049-3-203 | V049-3-503 | V049-3-703 |
| | | V049-3-803 |



DETAIL 9 REF. SCALE: 1" = 1'-0"

| | | |
|------------|------------|------------|
| V049-3-112 | V049-3-303 | V049-3-612 |
| V049-3-113 | V049-3-403 | V049-3-613 |
| V049-3-203 | V049-3-503 | V049-3-703 |
| | | V049-3-803 |



DETAIL 10 REF. SCALE: 1" = 1'-0"

| | | |
|------------|------------|------------|
| V049-3-112 | V049-3-303 | V049-3-612 |
| V049-3-113 | V049-3-403 | V049-3-613 |
| V049-3-203 | V049-3-503 | V049-3-703 |
| | | V049-3-803 |

PRELIMINARY NOT FOR CONSTRUCTION
FADI AZIZ BARK
VA REG. #33057

LIGO-D961482-00-V

| | | | | | | | | | | | |
|---|--|--|--|---|--|--|--|---|--|--|--|
| UNLESS OTHERWISE SPECIFIED DIMENSIONS ARE IN INCHES | | | | TOLERANCES: FRACTIONAL & ANGULAR: 1/16" & 30° BEND 1/8" | | | | TWO PLACE DECIMAL, 1/16" & 3/32" THREE PLACE DECIMAL, 1/32" FINISHED SURFACE DIMS BREAK CORNERS TO OUT REMOVE ALL BURRS | | | |
| DO NOT SCALE THIS DRAWING | | | | ISSUE FOR FOR UPDATE & BID | | | | 11.25.96 0355 | | | |
| USED ON: | | | | REV: | | | | DESCRIPTION | | | |
| NEXT ASS'Y: | | | | ISSUE DESCRIPTION | | | | CHKD: DATE: DECD: | | | |
| SCALE: AS NOTED | | | | SHEET: 1 OF 1 | | | | REV: 0 | | | |

THIS DOCUMENT CONTAINS PROPRIETARY INFORMATION BELONGING TO PROCESS SYSTEMS INTERNATIONAL, INC. OR ITS AFFILIATED COMPANIES AND SHALL BE USED ONLY FOR THE PURPOSE FOR WHICH IT WAS SUPPLIED. IT SHALL NOT BE COPIED, REPRODUCED OR OTHERWISE USED FOR ANY OTHER PURPOSE WITHOUT THE WRITTEN CONSENT OF PROCESS SYSTEMS INTERNATIONAL, INC. AND SHALL BE RETURNED UPON REQUEST.

PROCESS SYSTEMS INTERNATIONAL, INC.
20 WALRUP DR. WESTBOROUGH, MASSACHUSETTS 01581 USA

INSTR. ELEC. INSTALLATION DETAILS
LIGO VACUUM EQUIPMENT
WASHINGTON SITE &
LOUISIANA SITE

CAD FILE: V0493007
SIZE: D
DWG NO.: V049-3-007
SCALE: AS NOTED
SHEET: 1 OF 1