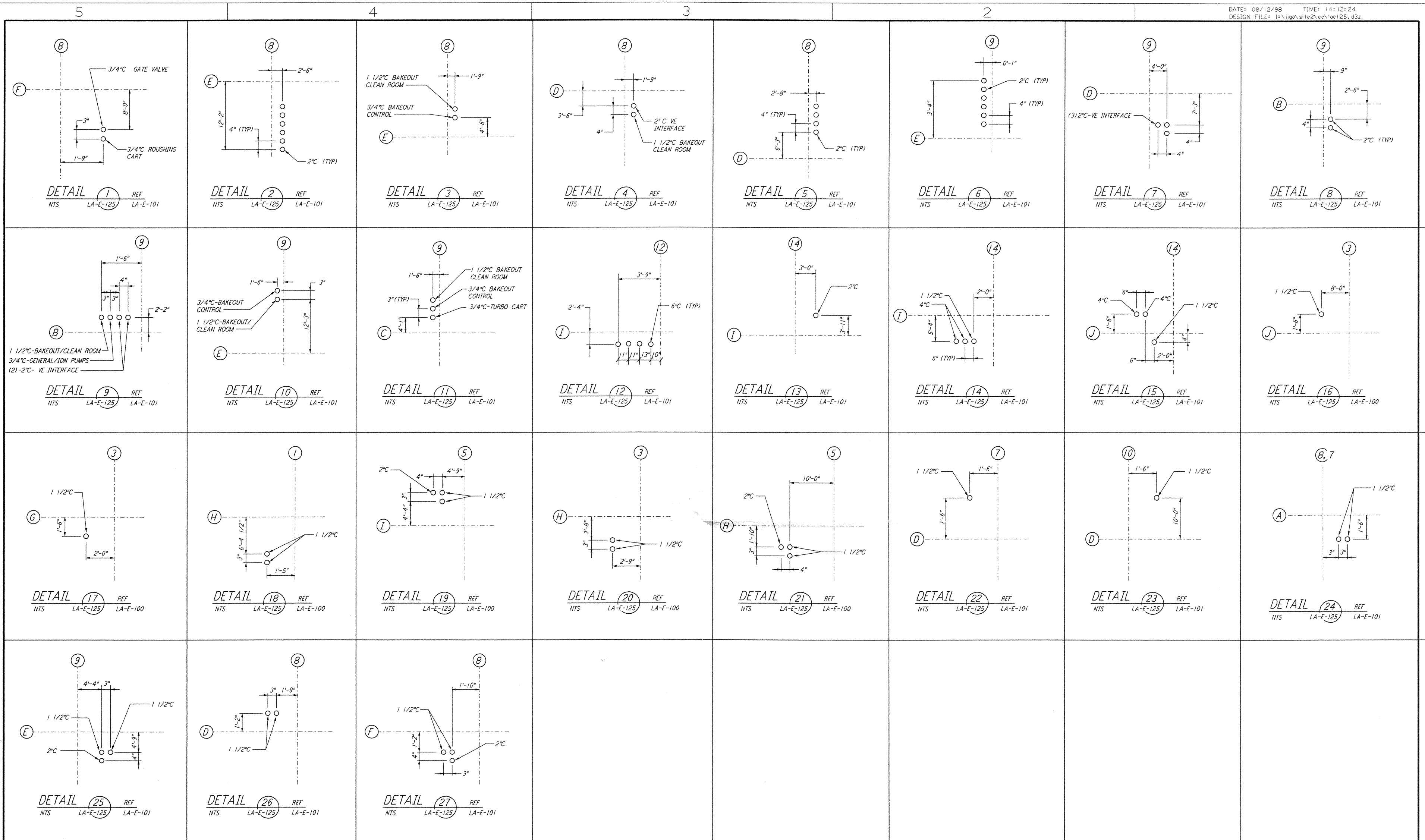


This document and the design it covers are the property of PARSONS. They are loaned only with the borrower's expressed written agreement that they will not be reproduced, copied, loaned, exhibited, or used in any other way, except by written consent from PARSONS to the borrower.



NOTE: THE DETAILS ON SHEETS LA-E-123, LA-E-124 AND LA-E-125 SUPERSEDE, ENTIRELY THE DETAILS ON SHEET LA-E-114

NO.	DATE	BY	CHKD	ENGR	PROJ	DESCRIPTION
3	8-7-98	JE	AK	AK	WLD	ISSUED FOR AS-BUILT
2	4-21-97	J.G.	KR	KR	F. D. M.	REVISED FOR CDS AND VAC. EQUIP.
1	4-4-97	J.G.	KR	KR	TDM	GENERAL REVISIONS

ISSUED FOR CONSTRUCTION  
 DRAWN J. G. 3-21-97  
 CHECKED B. K. 3-21-97  
 ENGINEER K. C. R. 3-21-97  
 PROJ T. D. M. 3-21-97

**AS-BUILT DRAWINGS**

**PARSONS**  
 100 WEST WALNUT STREET  
 PASADENA, CALIFORNIA

**LIGO**  
 CALIFORNIA INSTITUTE OF TECHNOLOGY  
 MASSACHUSETTS INSTITUTE OF TECHNOLOGY

**LIGO-D961481-03-0**

LASER INTERFEROMETER  
 GRAVITATIONAL-WAVE OBSERVATORY  
 SITE NO. 2 - LIVINGSTON, LOUISIANA

TITLE	SCALE	CONTRACT NUMBER	PROJECT NUMBER
ELECTRICAL CORNER STATION LVEA AREAS 101, 102, 103, 104 DETAILS	NONE	PP150969	8094
SHEET NUMBER		REVISIONS	
LA-E-125		3	