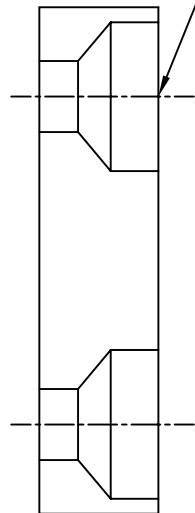
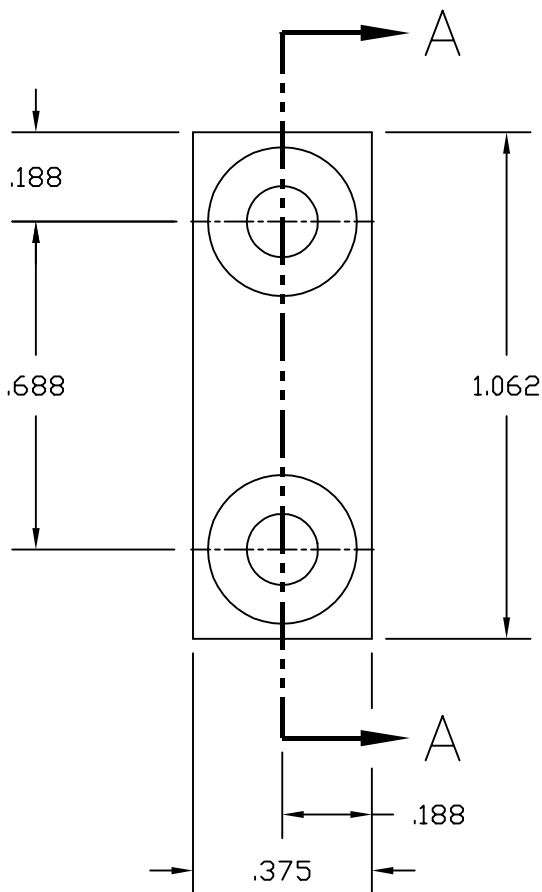


.250
 2X ϕ .149 THRU
 ϕ .313 CDRILL $100^{\circ} \pm 1^{\circ}$
 ∇ .100



SECTION A-A



UNLESS OTHERWISE SPECIFIED
 DIMENSIONS ARE IN INCHES

TOLERANCES:
 FRACTIONAL \pm
 ANGULAR $\pm 0.5^{\circ}$
 ANGULAR MACH \pm BEND \pm
 TWO PLACE DECIMAL $\pm .03$

THREE PLACE DECIMAL $\pm .005$
 FINISHED SURFACE 32 MICRINCH AVERAGE
 BREAK CORNERS IN: OUT: .005-.010
 REMOVE ALL BURRS

MATERIAL:
 TEFLON PFA 440 HP

HEAT TREAT:

FINISH:

USED ON:

NEXT ASS'Y: D961418

REV	DESCRIPTION	DCC	SYS	DET	CDS	VE	CC	BT	CHECK	DRWN	DATE
A	DCN E960157										
PA	PRELIMINARY RELEASE										
00	PRE-RELEASE									CONLEY	12-17-96

LIGO CALIFORNIA INSTITUTE OF TECHNOLOGY
 MASSACHUSETTS INSTITUTE OF TECHNOLOGY

CORE OPTIC COMPONENT CARRIER
 FOOT PAD

CAD FILE
 D961470-A.dwg

SIZE DWG. NDL
 A D961470-A-D

SCALE
 NTS

SHEET
 1 OF 1

ISSUE DESCRIPTION