
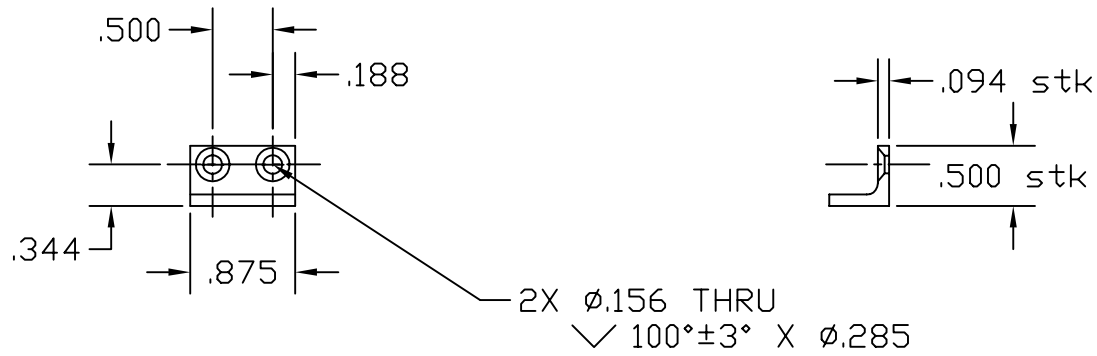


NOTES: (UNLESS OTHERWISE SPECIFIED)

1. INTERPRET DRAWING PER ANSI
Y14.5M-1982

 MATERIAL:
MAKE FROM TIERNAY METALS #60-76 OR
EQUIVALENT .50 X .50 X 90° ALU <
FOR VENDOR INFORMATION, SEE TOP
ASSEMBLY MATERIALS LIST D970006
OR D970007.



UNLESS OTHERWISE SPECIFIED
DIMENSIONS ARE IN INCHES

TOLERANCES:
FRACTIONAL ±
ANGULAR ± 0.5°
ANGULARMACH ± BEND ±
TWO PLACE DECIMAL ± .03

THREE PLACE DECIMAL ± .005
FINISHED SURFACE 32 microinch average
BREAK CORNERS IN: OUT: .005-.010
REMOVE ALL BURRS

LIGO CALIFORNIA INSTITUTE OF TECHNOLOGY
MASSACHUSETTS INSTITUTE OF TECHNOLOGY

CORE OPTIC COMPONENT CARRIER
PAD GUIDE

| | | |
|--|-------------------------------|---------|
| MATERIAL:  | HEAT TREAT: | FINISH: |
| USED ON: | NEXT ASS'Y: D961450 & D961468 | |

| REV | DESCRIPTION | DCC | SYS | DET | CDS | VE | CC | BT | CHECK | DRWN | DATE |
|-----|-----------------|-----|-----|-----|-----|----|----|----|-------|------|---------|
| A | DCN E960157 | | | | | | | | | | |
| 00 | RELEASE FOR FAB | | | | | | | | KABDT | | 1/14/97 |

| | | |
|---------------------------|-----------------|-------------------------|
| CAD FILE D961466-A.dwg | SIZE A | DWG. NO. D961466-A-D |
| SCALE NTS | SHEET 1 OF 1 | |