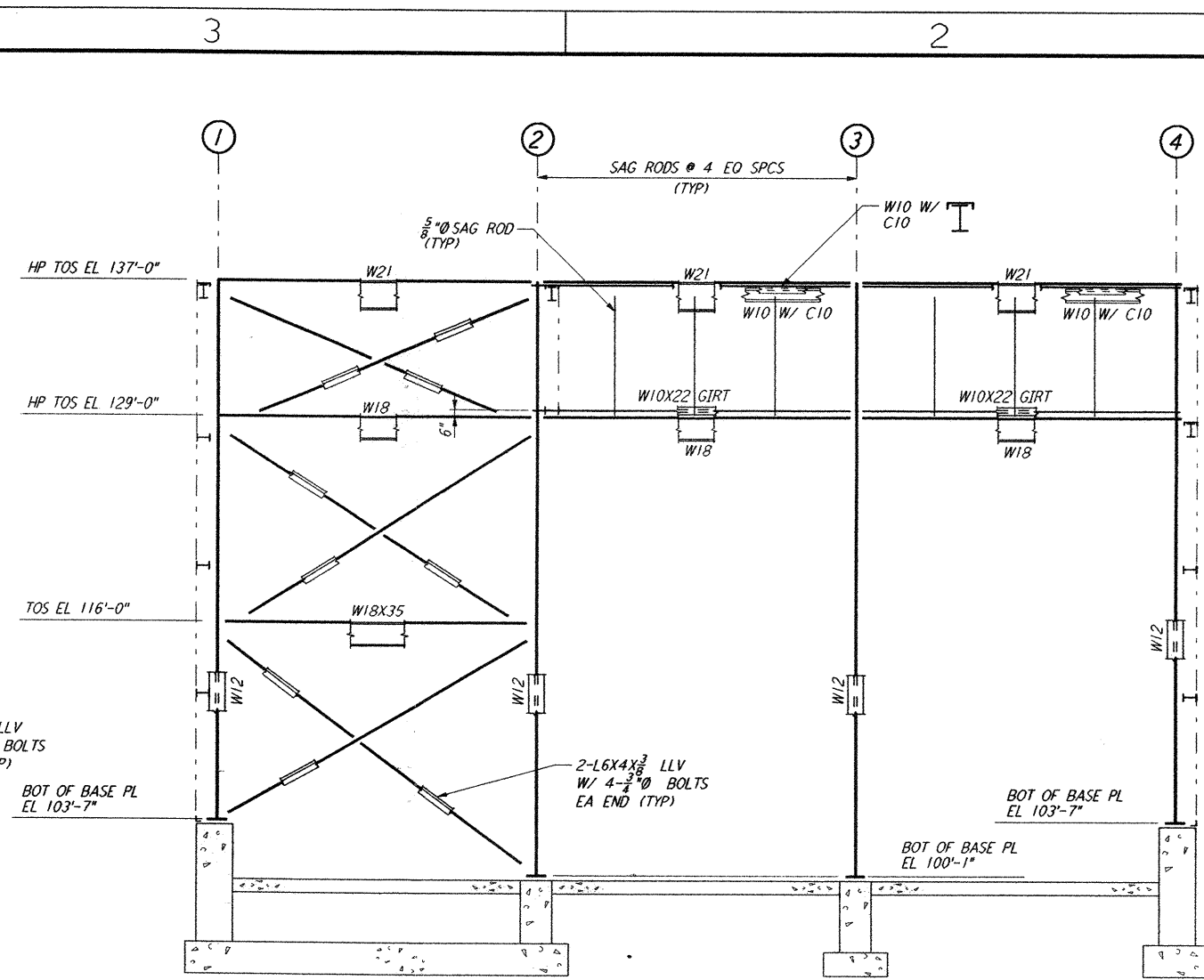
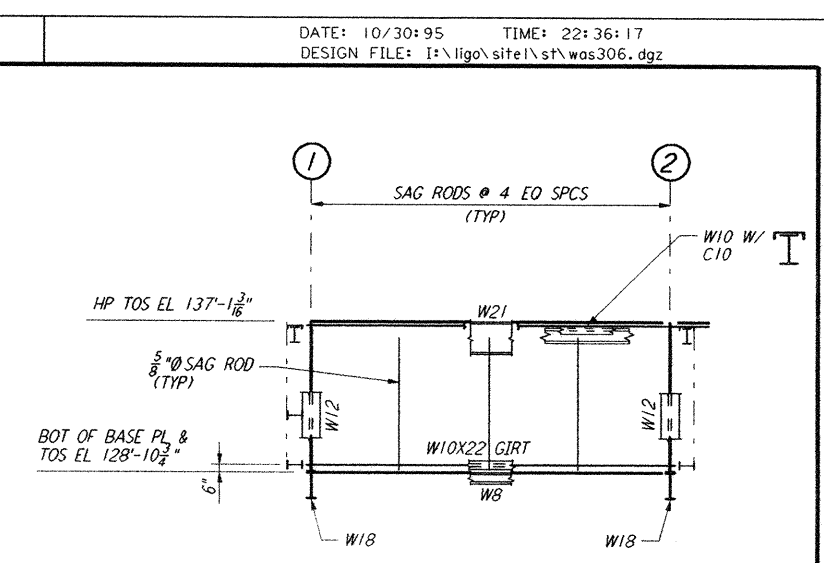


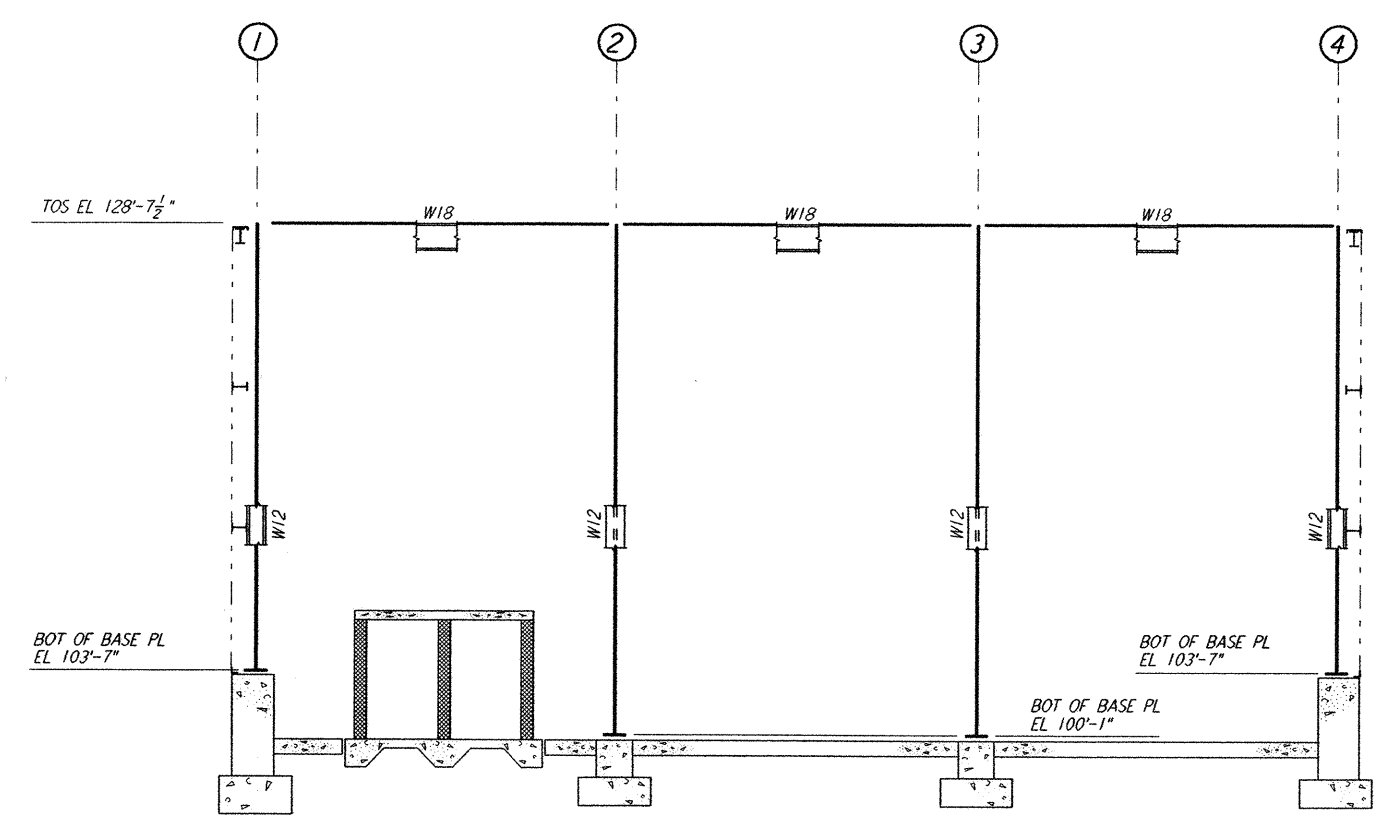
ELEVATION AT COLUMN LINE A
 $\frac{3}{8}'' = 1'-0''$



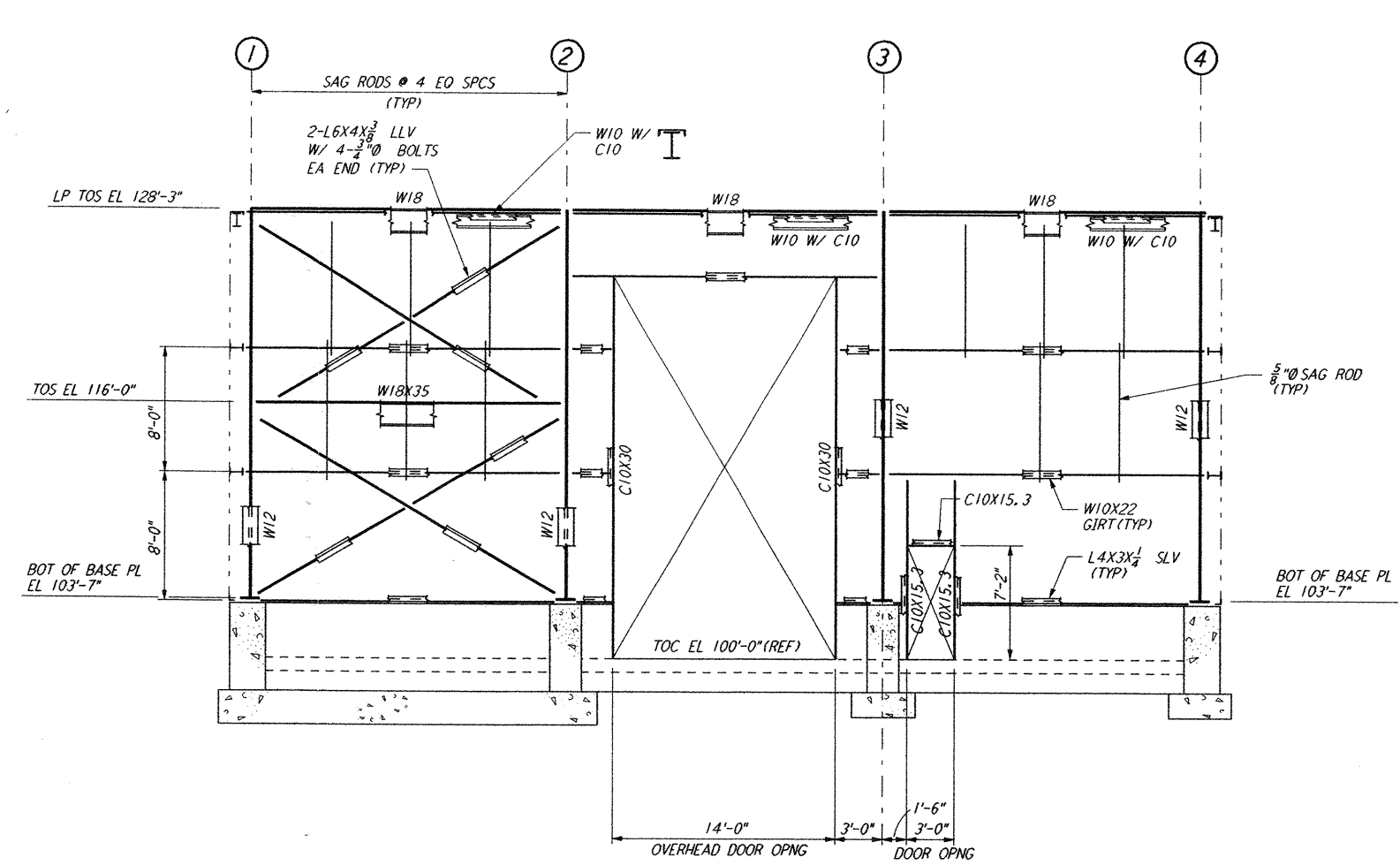
ELEVATION AT COLUMN LINE B
 $\frac{3}{8}'' = 1'-0''$



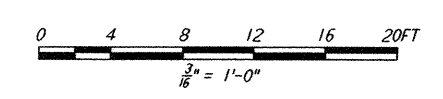
ELEVATION AT COLUMN LINE B.1
 $\frac{3}{8}'' = 1'-0''$



ELEVATION AT COLUMN LINE C
 $\frac{3}{8}'' = 1'-0''$



ELEVATION AT COLUMN LINE D
 $\frac{3}{8}'' = 1'-0''$

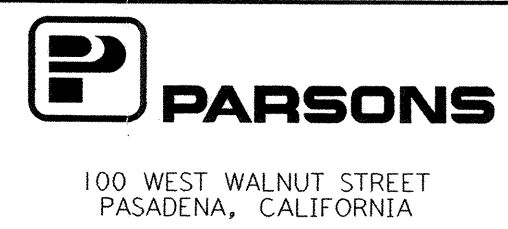


This document and the design it covers are the property of PARSONS. They are loaned only with the borrower's expressed written agreement that they will not be reproduced, copied, loaned, exhibited, or used in any other way, except by written consent from PARSONS to the borrower.

REVISION	NO.	DATE	APRD BY	DESCRIPTION OF REVISION
9				
8				
7				
6				
5				
4				
3				
2				
1				

ISSUE	NO.	DATE	APRD BY	DESCRIPTION OF REVISION
J				
H				
G				
F				
E				
D				
C				
B				
A	10-31-95	TDM		PRELIMINARY DESIGN REVIEW ISSUED FOR

DATE	10-31-95
DRAWN	MCS
CHECKED	
ENGINEER	
PROJ MGR	



LASER INTERFEROMETER
 GRAVITATIONAL-WAVE OBSERVATORY
 SITE NO. 1 - HANFORD, WASHINGTON

TITLE: END STATION FRAMING ELEVATIONS SHEET 2

SCALE: AS NOTED

CONTRACT NUMBER: PP150969

PROJECT NUMBER: 8094

SHEET NUMBER: WA-S-306

Mon Oct 30 22:35:25 1995 S3-V18B2 J:\PLOTS\QUEJES\V18B2\ST306A.PR