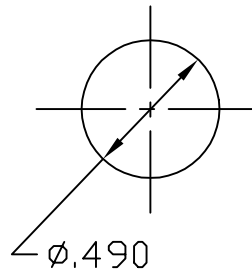
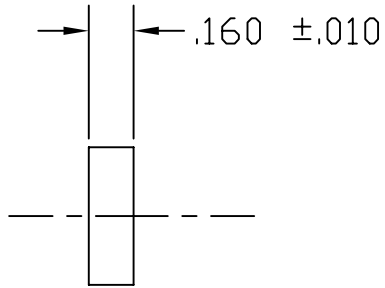


NOTES: (UNLESS OTHERWISE SPECIFIED)
 1. INTERPRET DRAWING PER ANSI Y14.5M-1982
 ⚠ N/A: D961434, D961435, D961444, D961445
 D961454, & D961455



UNLESS OTHERWISE SPECIFIED
 DIMENSIONS ARE IN INCHES

TOLERANCES:
 FRACTIONAL ±
 ANGULAR ± 0.5°
 ANGULAR MACH ± BEND ±
 TWO PLACE DECIMAL ± .03

THREE PLACE DECIMAL ± .005
 FINISHED SURFACE 32 MICRINCH AVERAGE
 BREAK CORNERS IN: OUT: .005-.010
 REMOVE ALL BURRS

MATERIAL:
 .50 DIA 6061 ALU BAR
 PER QQ-A-225/B

HEAT TREAT:
 T6 PER AMS 2770

FINISH

B	DCN E970044												
A	DCN E960157												
01	RELEASE FOR FAB												
0A	PRELIMINARY RELEASE												
00	PRE-RELEASE										KABOT	12-19-96	
REV	DESCRIPTION	DCC	SYS	DET	CDS	VE	CC	BT	CHECK	DRWN	DATE		

LIGO CALIFORNIA INSTITUTE OF TECHNOLOGY
 MASSACHUSETTS INSTITUTE OF TECHNOLOGY

CORE OPTIC COMPONENT CARRIER
 PRESSURE DISC

CAD FILE: D961426-B.dwg
 SCALE: NTS
 SIZE: A
 DWG. NO.: D961426-B-D
 SHEET: 1 OF 1

USED ON: NEXT ASS'Y: ⚠

ISSUE DESCRIPTION