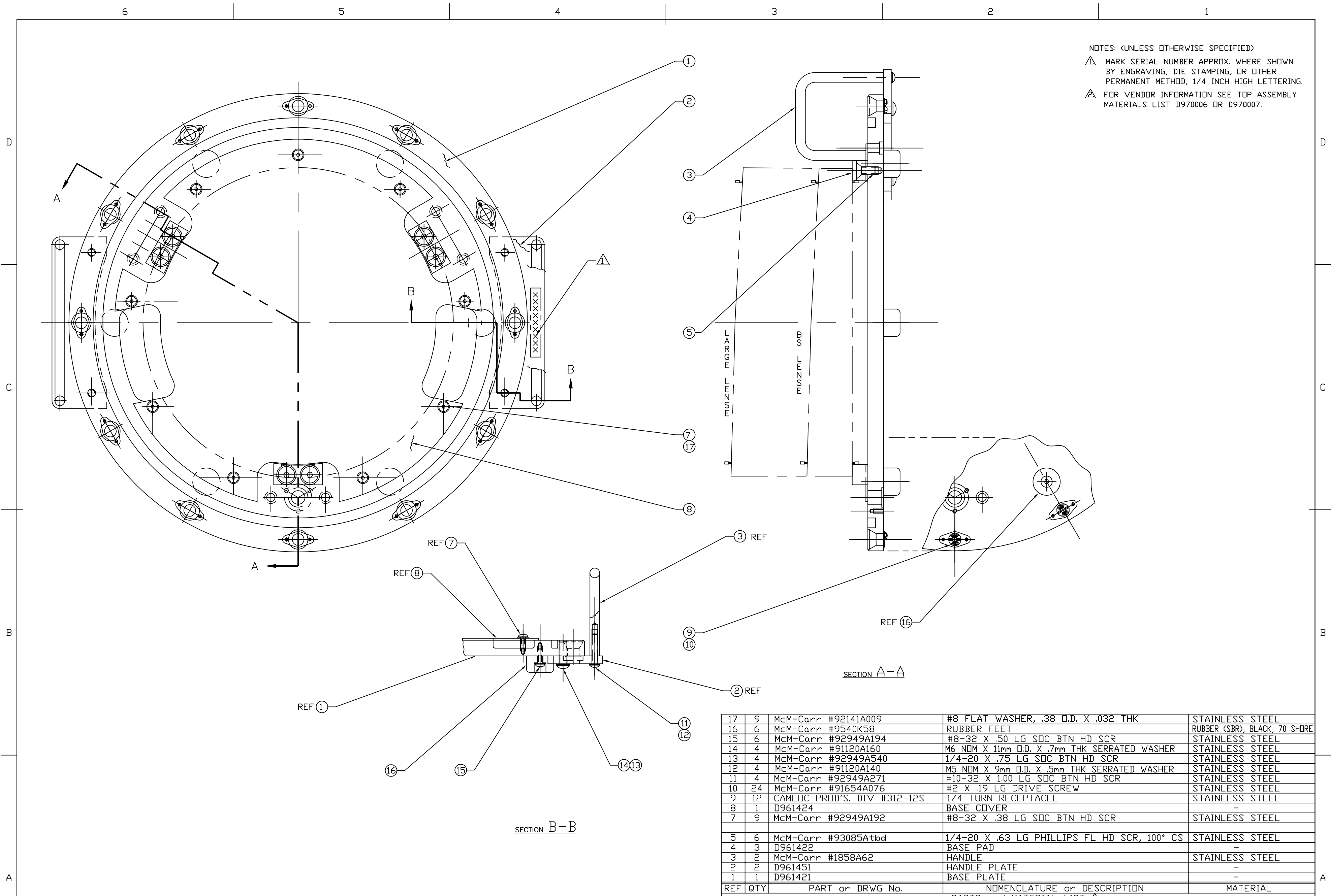


NOTES: (UNLESS OTHERWISE SPECIFIED)
 ⚠ MARK SERIAL NUMBER APPROX. WHERE SHOWN BY ENGRAVING, DIE STAMPING, OR OTHER PERMANENT METHOD, 1/4 INCH HIGH LETTERING.
 ⚠ FOR VENDOR INFORMATION SEE TOP ASSEMBLY MATERIALS LIST D970006 OR D970007.



REF	QTY	PART or DRWG No.	NOMENCLATURE or DESCRIPTION	MATERIAL
17	9	McM-Carr #92141A009	#8 FLAT WASHER, .38 O.D. X .032 THK	STAINLESS STEEL
16	6	McM-Carr #9540K58	RUBBER FEET	RUBBER (SBR), BLACK, 70 SHORE
15	6	McM-Carr #92949A194	#8-32 X .50 LG SDC BTN HD SCR	STAINLESS STEEL
14	4	McM-Carr #91120A160	M6 NDM X 11mm O.D. X .7mm THK SERRATED WASHER	STAINLESS STEEL
13	4	McM-Carr #92949A540	1/4-20 X .75 LG SDC BTN HD SCR	STAINLESS STEEL
12	4	McM-Carr #91120A140	M5 NDM X 9mm O.D. X .5mm THK SERRATED WASHER	STAINLESS STEEL
11	4	McM-Carr #92949A271	#10-32 X 1.00 LG SDC BTN HD SCR	STAINLESS STEEL
10	24	McM-Carr #91654A076	#2 X .19 LG DRIVE SCREW	STAINLESS STEEL
9	12	CAMLDC PROD'S. DIV #312-12S	1/4 TURN RECEPTACLE	STAINLESS STEEL
8	1	D961424	BASE COVER	-
7	9	McM-Carr #92949A192	#8-32 X .38 LG SDC BTN HD SCR	STAINLESS STEEL
5	6	McM-Carr #93085Atbd	1/4-20 X .63 LG PHILLIPS FL HD SCR, 100° CS	STAINLESS STEEL
4	3	D961422	BASE PAD	-
3	2	McM-Carr #1858A62	HANDLE	STAINLESS STEEL
2	2	D961451	HANDLE PLATE	-
1	1	D961421	BASE PLATE	-

SECTION B-B

SECTION A-A

DWG. NO.		DESCRIPTION		MATERIAL		HEAT TREAT		FINISH		REV		DESCRIPTION		ISSUE DESCRIPTION		SCALE		NTS		SHEET	
D961425-C <td colspan="2">CORE OPTIC COMPONENT CARRIER BASE ASSEMBLY <td colspan="2">STAINLESS STEEL <td colspan="2">NONE <td colspan="2">NONE <td colspan="2">00 <td colspan="2">PRE-RELEASE <td colspan="2">DCC SYS DET CDS VE CC BT CHK DRWN DATE <td colspan="2">SCALE</td> <td colspan="2">SHEET</td> </td></td></td></td></td></td></td>		CORE OPTIC COMPONENT CARRIER BASE ASSEMBLY <td colspan="2">STAINLESS STEEL <td colspan="2">NONE <td colspan="2">NONE <td colspan="2">00 <td colspan="2">PRE-RELEASE <td colspan="2">DCC SYS DET CDS VE CC BT CHK DRWN DATE <td colspan="2">SCALE</td> <td colspan="2">SHEET</td> </td></td></td></td></td></td>		STAINLESS STEEL <td colspan="2">NONE <td colspan="2">NONE <td colspan="2">00 <td colspan="2">PRE-RELEASE <td colspan="2">DCC SYS DET CDS VE CC BT CHK DRWN DATE <td colspan="2">SCALE</td> <td colspan="2">SHEET</td> </td></td></td></td></td>		NONE <td colspan="2">NONE <td colspan="2">00 <td colspan="2">PRE-RELEASE <td colspan="2">DCC SYS DET CDS VE CC BT CHK DRWN DATE <td colspan="2">SCALE</td> <td colspan="2">SHEET</td> </td></td></td></td>		NONE <td colspan="2">00 <td colspan="2">PRE-RELEASE <td colspan="2">DCC SYS DET CDS VE CC BT CHK DRWN DATE <td colspan="2">SCALE</td> <td colspan="2">SHEET</td> </td></td></td>		00 <td colspan="2">PRE-RELEASE <td colspan="2">DCC SYS DET CDS VE CC BT CHK DRWN DATE <td colspan="2">SCALE</td> <td colspan="2">SHEET</td> </td></td>		PRE-RELEASE <td colspan="2">DCC SYS DET CDS VE CC BT CHK DRWN DATE <td colspan="2">SCALE</td> <td colspan="2">SHEET</td> </td>		DCC SYS DET CDS VE CC BT CHK DRWN DATE <td colspan="2">SCALE</td> <td colspan="2">SHEET</td>		SCALE		SHEET			
D961425-C <td colspan="2">CORE OPTIC COMPONENT CARRIER BASE ASSEMBLY</td> <td colspan="2">STAINLESS STEEL</td> <td colspan="2">NONE</td> <td colspan="2">NONE</td> <td colspan="2">00</td> <td colspan="2">PRE-RELEASE</td> <td colspan="2">DCC SYS DET CDS VE CC BT CHK DRWN DATE</td> <td colspan="2">SCALE</td> <td colspan="2">SHEET</td>		CORE OPTIC COMPONENT CARRIER BASE ASSEMBLY		STAINLESS STEEL		NONE		NONE		00		PRE-RELEASE		DCC SYS DET CDS VE CC BT CHK DRWN DATE		SCALE		SHEET			

LIGO CALIFORNIA INSTITUTE OF TECHNOLOGY
 MASSACHUSETTS INSTITUTE OF TECHNOLOGY
 CORE OPTIC COMPONENT CARRIER
 BASE ASSEMBLY
 CAD FILE: D961425-C.dwg
 SIZE: C
 DWG. NO.: D961425-C-D
 SHEET: 1 OF 1