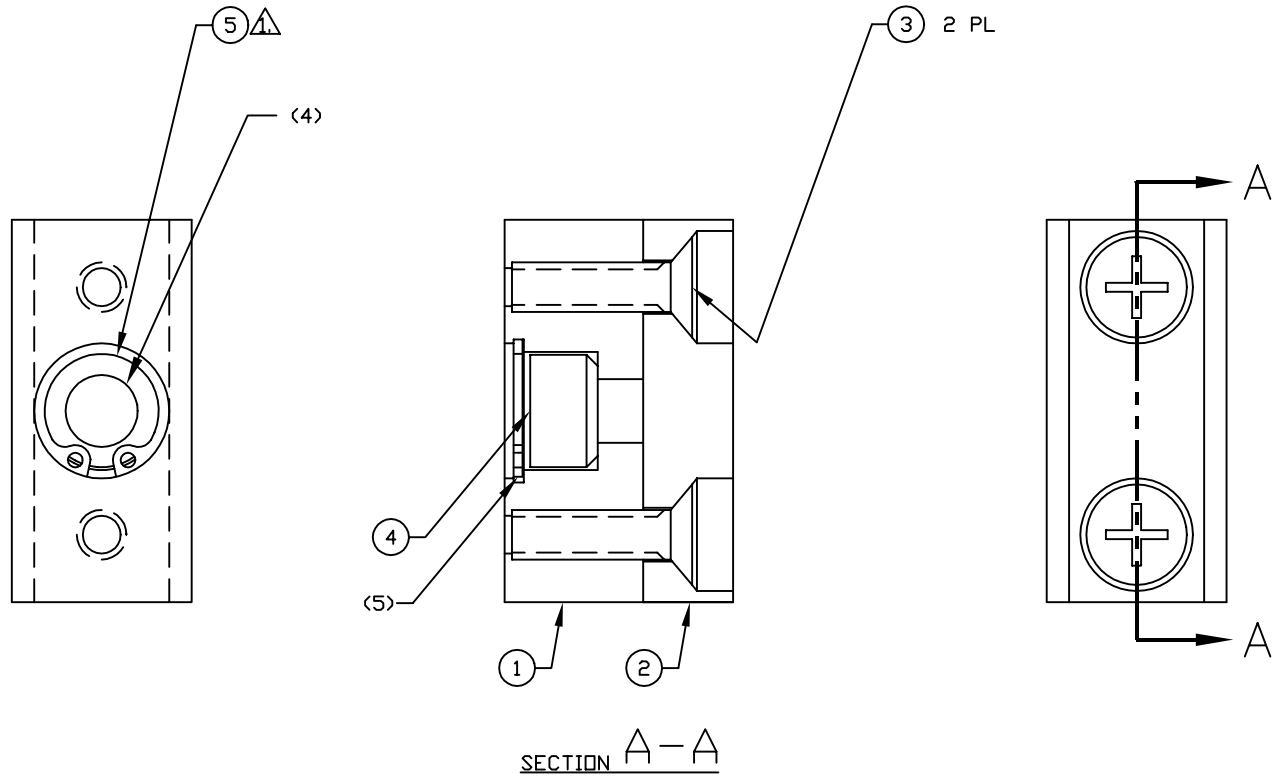


NOTES: (UNLESS OTHERWISE SPECIFIED)
 ⚠ INSTALL CLOCKED AS SHOWN ±5° WRT/ ITEM 1.
 ⚠ FOR VENDOR INFORMATION, SEE TOP ASSEMBLY MATERIALS LIST D970006 OR D970007.



5	1	PROSPECT FASTENERS DHO-9	9mm INTERNAL RETAINING RING	ARMCO PH 15-7 MD
4	1	NORTHWESTERN TOOLS 45201	5/16 O.D. X 3/16 SHOE	SS
3	2	McM-CARR 93085A148	#6-32 X 1/2 100° CS FLAT HEAD SCREW	18-8 SS
2	1	LIGO D961470	CDC CARRIER FOOT PAD	TEFLON PFA 440 HP
1	1	LIGO D961469	CDC CARRIER FOOT	6061-T6 ALU
REF.	QTY.	PART or DRWG No.	NOMENCLATURE or DESCRIPTION	MATERIAL

PARTS and MATERIAL LIST ⚠

UNLESS OTHERWISE SPECIFIED
 DIMENSIONS ARE IN INCHES

TOLERANCES:
 FRACTIONAL ±
 ANGULAR ±
 ANGULAR MACH ± BEND ±
 TWO PLACE DECIMAL ±

THREE PLACE DECIMAL ±
 FINISHED SURFACE MICROINCHES
 BREAK CORNERS IN: OUT:
 REMOVE ALL BURRS

MATERIAL: HEAT TREAT: FINISH:

USED ON: NEXT ASS'Y: D961450/D961468

A	DCN E960157											
01	RELEASE FOR FAB											
PA	PRELIMINARY RELEASE											
00	PRE-RELEASE									CONLEY	12-5-96	
REV	DESCRIPTION	DCC	SYS	DET	CDS	VE	CC	BT	CHECK	DRWN	DATE	

LIGO CALIFORNIA INSTITUTE OF TECHNOLOGY
 MASSACHUSETTS INSTITUTE OF TECHNOLOGY

CORE OPTIC COMPONENT CARRIER
 FOOT ASSEMBLY

CAD FILE: D961418-A.dwg SIZE: DWG. NL: A D961418-A-D

SCALE: NTS SHEET: 1 OF 1