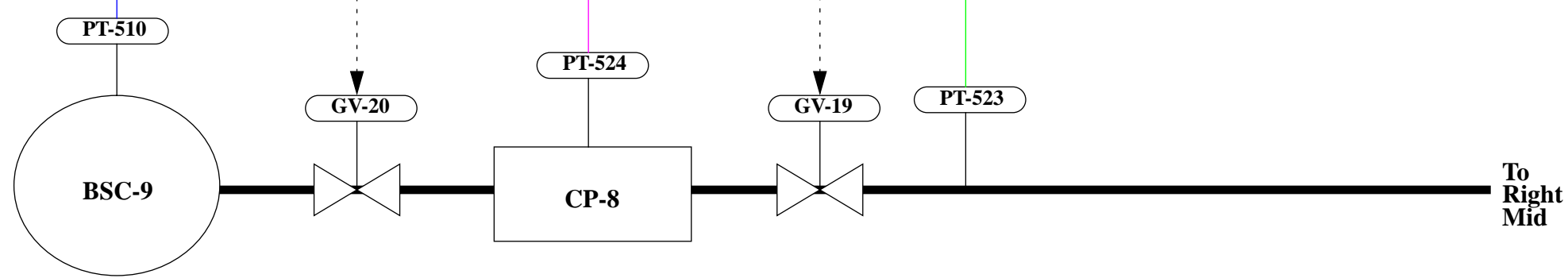


NOTES:

- 1) Not all terminal block connections are shown; see left mid station drawing set for detailed connections.
- 2) Switches S4 and S5 should be set with switch lever to rear of module.
- 3) Relays 1, 3, 5 and 6 are not used/connected.
- 4) Comparators A, C and E are connected to Pirani gauges; thresholds should be set to 400mV.
- 5) Comparators B, D and F are connected to cold cathode gauges; thresholds should be set to 6V.



UNLESS OTHERWISE SPECIFIED DIMENSIONS ARE IN INCHES TOLERANCES: FRACTIONAL ± ANGULAR ± BEND ± TWO PLACE DECIMAL ± THREE PLACE DECIMAL ± FINISHED SURFACE RMS BREAK CORNERS IN REMOVE ALL BLURS				CURRENT REVISION APPROVAL				LIGO CALIFORNIA INSTITUTE OF TECHNOLOGY MASSACHUSETTS INSTITUTE OF TECHNOLOGY			
DO NOT SCALE THIS DRAWING				DRAWN: R. Bork				GROUP: _____ SIGNATURE: _____ DATE: _____			
USED ON: _____				CHECKED: _____				INITIAL RELEASE PER ECN E970001-00-C			
NEXT ASS'Y: _____				REV: _____				DESCRIPTION: _____			
REFERENCE DRAWINGS				SHEETS EFFECTED: _____				SCALE: _____			
DWG. NO. _____				DATE: _____				SIZE: B DWG. NO. D961394-A-C			
6				5				4			
3				2				1			
EAD FILE				SCALE				SHEET			
STD				VER. 01							