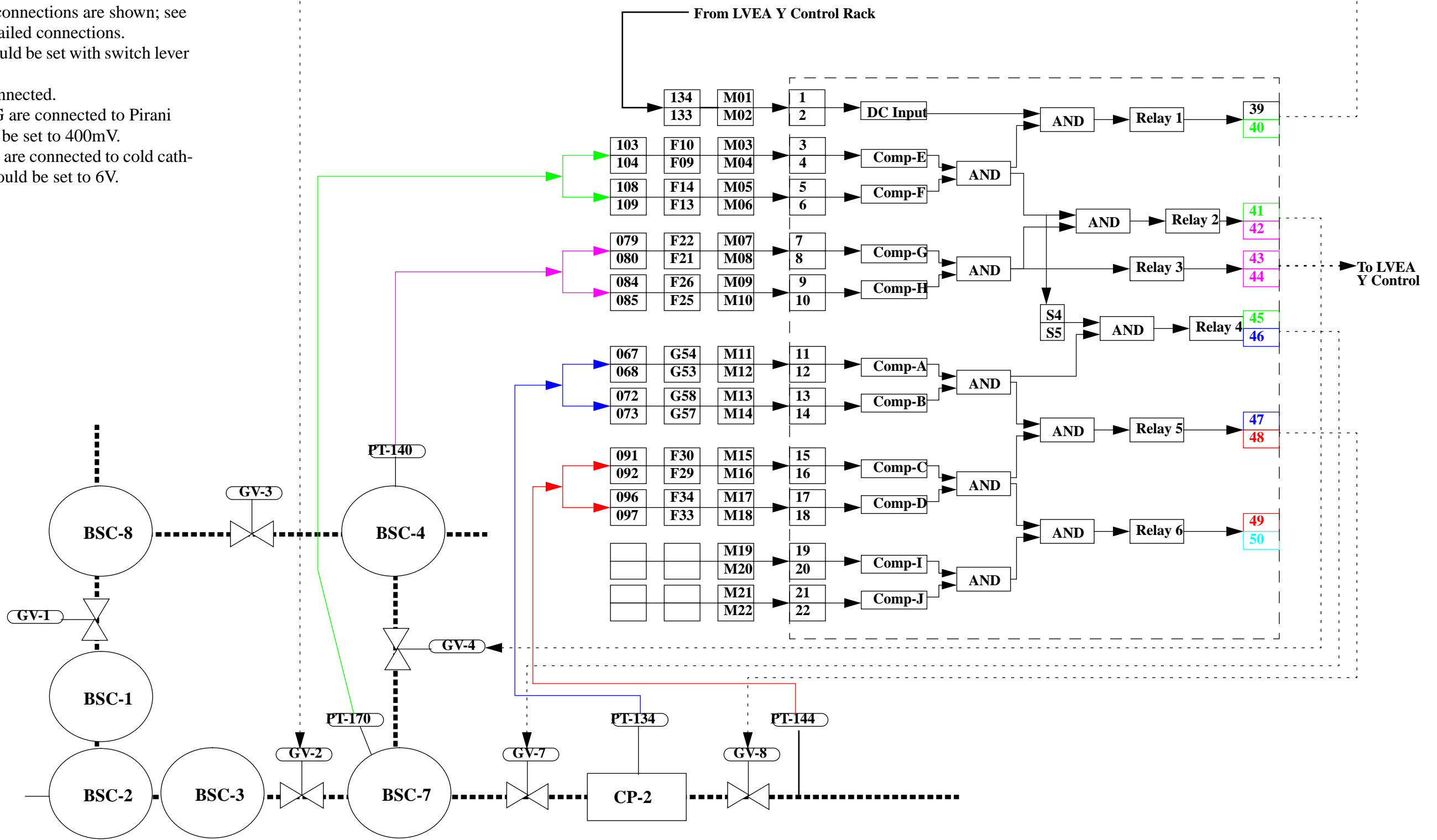


NOTES:

- 1) Not all terminal block connections are shown; see LVEA drawing set for detailed connections.
- 2) Switches S4 and S5 should be set with switch lever to **front** of module.
- 3) Relays 6 is not used/connected.
- 4) Comparators A, C, E, G are connected to Pirani gauges; thresholds should be set to 400mV.
- 5) Comparators B, D, F, H are connected to cold cathode gauges; thresholds should be set to 6V.



UNLESS OTHERWISE SPECIFIED
 DIMENSIONS ARE IN INCHES
 TOLERANCES:
 FRACTIONAL ±
 ANGULAR ± BEND ±
 TWO PLACE DECIMAL ±
 THREE PLACE DECIMAL ±
 FINISHED SURFACE RMS
 BREAK CORNERS IN
 REMOVE ALL BLURS

DO NOT SCALE THIS DRAWING
 USED ON:
 NEXT ASS'Y:

| REV | DESCRIPTION | SHEETS EFFECTED | DATE |
|-----|-------------|-----------------|------|
| | | | |
| | | | |
| | | | |
| | | | |
| | | | |
| | | | |

| CURRENT REVISION APPROVAL | | | |
|---------------------------|-------|-----------|------|
| DRAWN | GROUP | SIGNATURE | DATE |
| R. Bork | | | |
| R. Bork | | | |

| | | | |
|---|-------|-------------|------|
| LIGO CALIFORNIA INSTITUTE OF TECHNOLOGY MASSACHUSETTS INSTITUTE OF TECHNOLOGY | | | |
| VCMS Electrical Diagram WA LVEA X Arm GV Interlock Module Connections | | | |
| SCALE | SIZE | DWG. NO. | REV. |
| | B | D961316-A-C | |
| EAD FILE | SCALE | SHEET | STD |
| | | | |