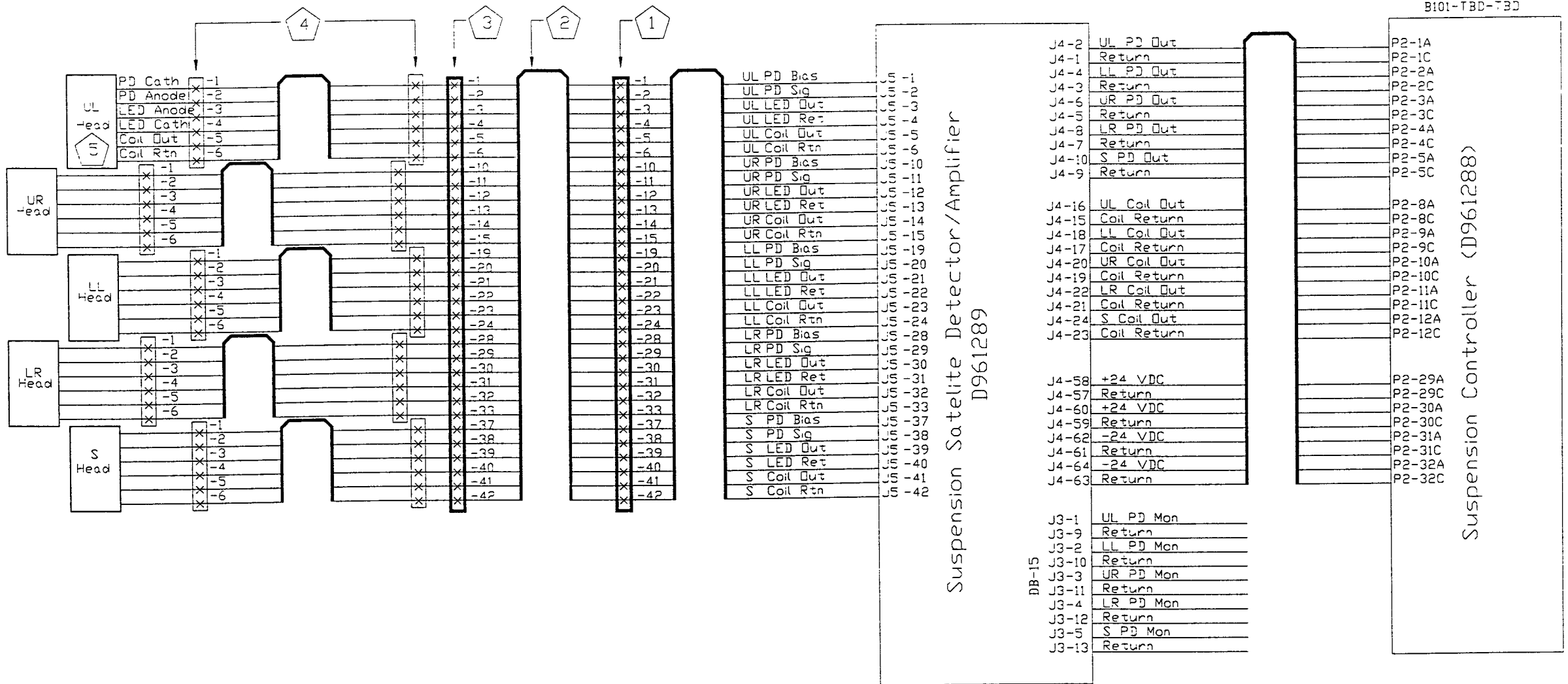


REV	Description	Date	Appr



1	Vacuum Feedthrough Connector Ceramaseal #XXXXXXX, 50 pin D
2	Seismic Stack Cabling (Flexible Kapton)
3	Vacuum Feedthrough Connector Ceramaseal #XXXXXXX, 50 pin D mounted on optics table (not feedthrough)
4	Kapton cables to individual coils
5	UL and LR coil wiring is reversed from UR, LL and S wiring.

TITLE			
40 Meter BS and RCM Suspension System Diagram			
DRAWN	J Heefner	DATE	9/10/96
CHECKED		DATE	
APPROVED		DATE	
ENGINEER		FILE NUMBER	SIZE
J Heefner		D961287	D
SCALE		SHOWN ON	SHEET
			1 of 2

LIGO
Laser Interferometer Gravitational-Wave Observatory
California Institute of Technology
Massachusetts Institute of Technology

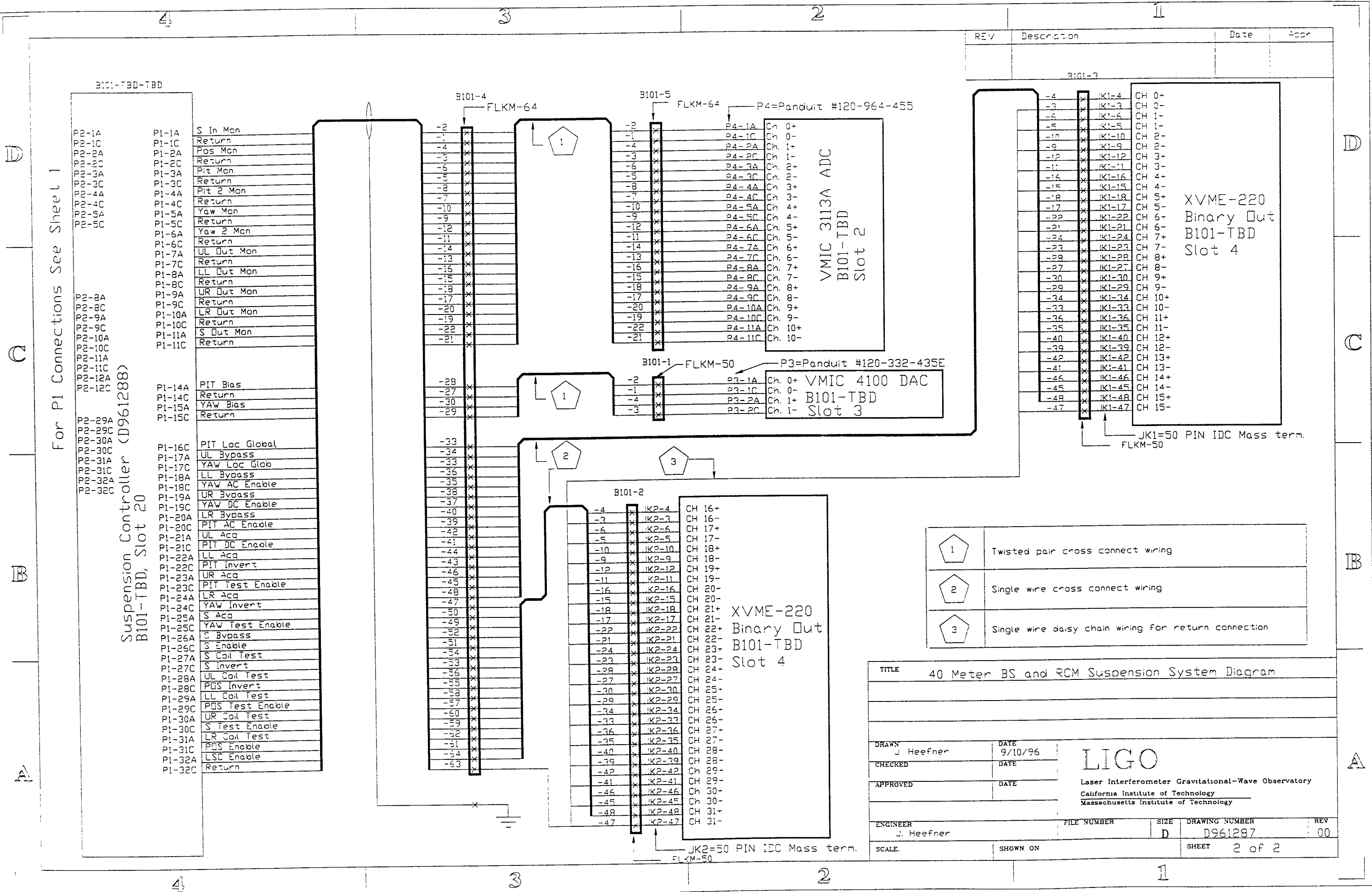
For P1 Connections See Sheet 2

Suspension Controller (D961288)

Suspension Satellite Detector/Amplifier
D961289

DB-15

B101-TBD-T3D



For P1 Connections See Sheet 1

B101-TBD-TBD

P2-1A	P1-1A	S In Mon
P2-1C	P1-1C	Return
P2-2A	P1-2A	Pos Mon
P2-2C	P1-2C	Return
P2-3A	P1-3A	Pit Mon
P2-3C	P1-3C	Return
P2-4A	P1-4A	Pit 2 Mon
P2-4C	P1-4C	Return
P2-5A	P1-5A	Yaw Mon
P2-5C	P1-5C	Return
P2-6A	P1-6A	Yaw 2 Mon
P2-6C	P1-6C	Return
P2-7A	P1-7A	UL Out Mon
P2-7C	P1-7C	Return
P2-8A	P1-8A	LL Out Mon
P2-8C	P1-8C	Return
P2-9A	P1-9A	UR Out Mon
P2-9C	P1-9C	Return
P2-10A	P1-10A	LR Out Mon
P2-10C	P1-10C	Return
P2-11A	P1-11A	S Out Mon
P2-11C	P1-11C	Return
P2-12A	P1-14A	PIT Bias
P2-12C	P1-14C	Return
P2-29A	P1-15A	YAW Bias
P2-29C	P1-15C	Return
P2-30A	P1-16C	PIT Loc Global
P2-30C	P1-17A	UL Bypass
P2-31A	P1-17C	YAW Loc Glob
P2-31C	P1-18A	LL Bypass
P2-32A	P1-18C	YAW AC Enable
P2-32C	P1-19A	UR Bypass
	P1-19C	YAW DC Enable
	P1-20A	LR Bypass
	P1-20C	PIT AC Enable
	P1-21A	UL Acq
	P1-21C	PIT DC Enable
	P1-22A	LL Acq
	P1-22C	PIT Invert
	P1-23A	UR Acq
	P1-23C	PIT Test Enable
	P1-24A	LR Acq
	P1-24C	YAW Invert
	P1-25A	S Acq
	P1-25C	YAW Test Enable
	P1-26A	S Bypass
	P1-26C	S Enable
	P1-27A	S Coil Test
	P1-27C	S Invert
	P1-28A	UL Coil Test
	P1-28C	POS Invert
	P1-29A	LL Coil Test
	P1-29C	POS Test Enable
	P1-30A	UR Coil Test
	P1-30C	S Test Enable
	P1-31A	LR Coil Test
	P1-31C	POS Enable
	P1-32A	LSC Enable
	P1-32C	Return

Suspension Controller (D961288)
B101-TBD, Slot 20

REV	Description	Date	Appr
-----	-------------	------	------

B101-3

-4	JK1-4	CH 0+
-3	JK1-3	CH 0-
-5	JK1-6	CH 1-
-10	JK1-5	CH 1-
-9	JK1-10	CH 2-
-12	JK1-9	CH 2-
-11	JK1-12	CH 3+
-16	JK1-11	CH 3-
-15	JK1-16	CH 4+
-15	JK1-15	CH 4-
-18	JK1-18	CH 5+
-17	JK1-17	CH 5-
-22	JK1-22	CH 6+
-21	JK1-21	CH 6-
-24	JK1-24	CH 7+
-23	JK1-23	CH 7-
-28	JK1-28	CH 8+
-27	JK1-27	CH 8-
-30	JK1-30	CH 9+
-29	JK1-29	CH 9-
-34	JK1-34	CH 10+
-33	JK1-33	CH 10-
-35	JK1-35	CH 11+
-35	JK1-36	CH 11+
-40	JK1-40	CH 12+
-39	JK1-39	CH 12-
-42	JK1-42	CH 13+
-41	JK1-41	CH 13-
-45	JK1-46	CH 14+
-45	JK1-45	CH 14-
-48	JK1-48	CH 15+
-47	JK1-47	CH 15-

JK1=50 PIN IDC Mass term.
FLKM-50

XVME-220
Binary Out
B101-TBD
Slot 4

VMIC 3113A ADC
B101-TBD
Slot 2

VMIC 4100 DAC
B101-TBD
Slot 3

XVME-220
Binary Out
B101-TBD
Slot 4

	Twisted pair cross connect wiring
	Single wire cross connect wiring
	Single wire daisy chain wiring for return connection

TITLE 40 Meter BS and RCM Suspension System Diagram				
DRAWN J. Heefner DATE 9/10/96				
CHECKED DATE				
APPROVED DATE				
LIGO Laser Interferometer Gravitational-Wave Observatory California Institute of Technology Massachusetts Institute of Technology				
ENGINEER J. Heefner	FILE NUMBER	SIZE D	DRAWING NUMBER D961287	REV 00
SCALE.	SHOWN ON	SHEET 2 of 2		